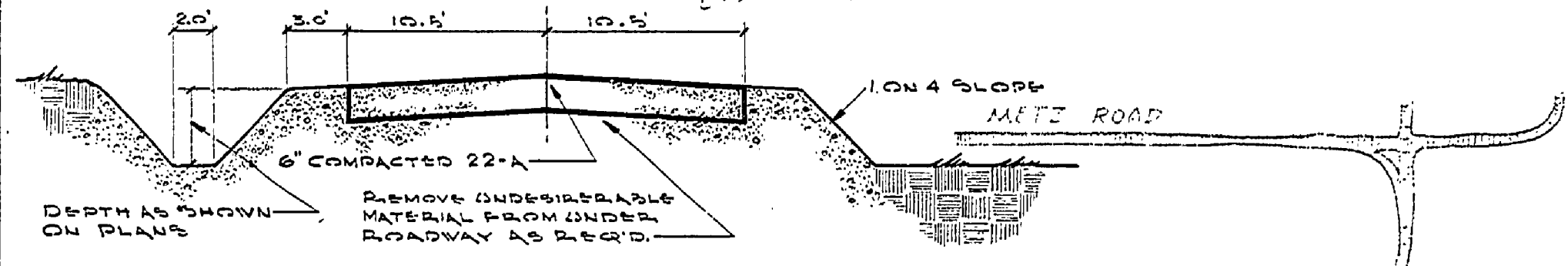
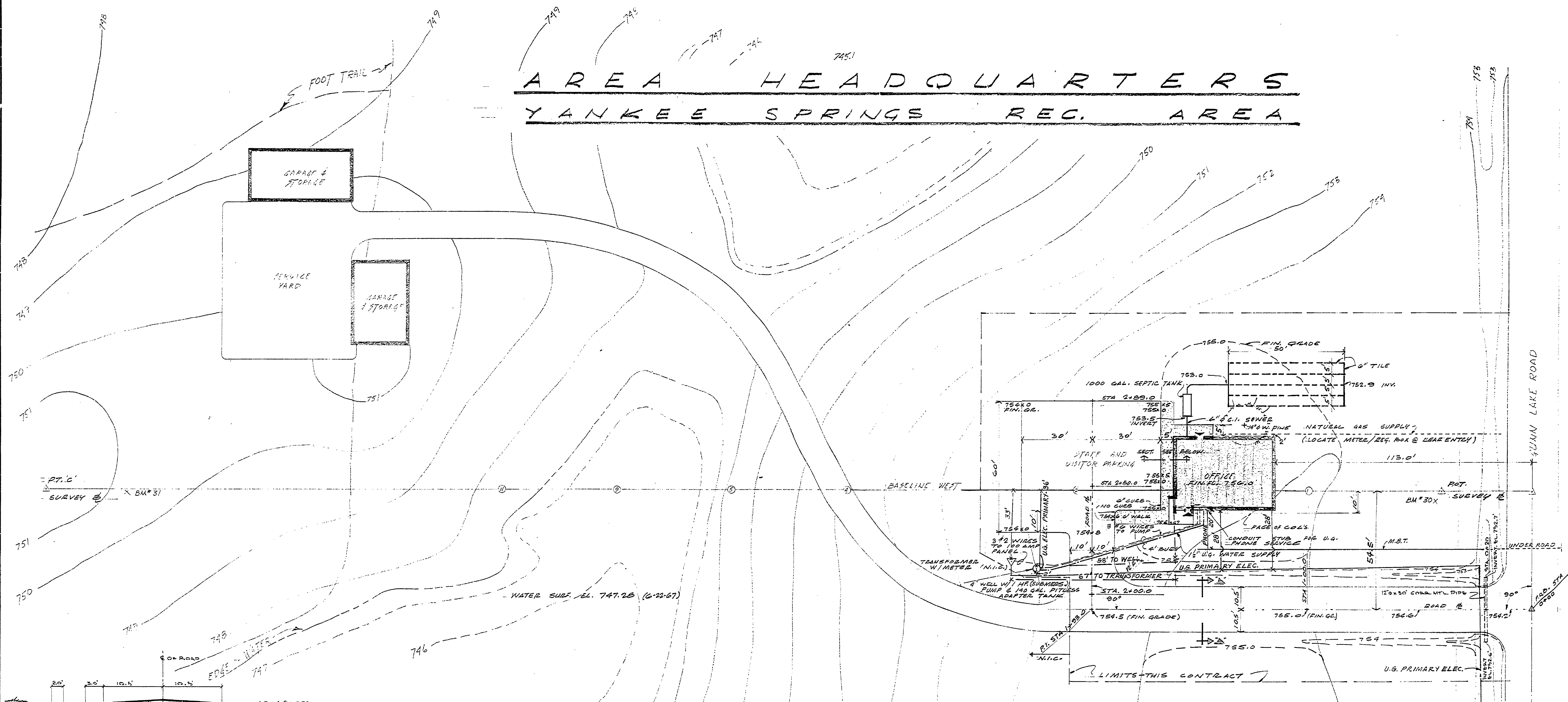


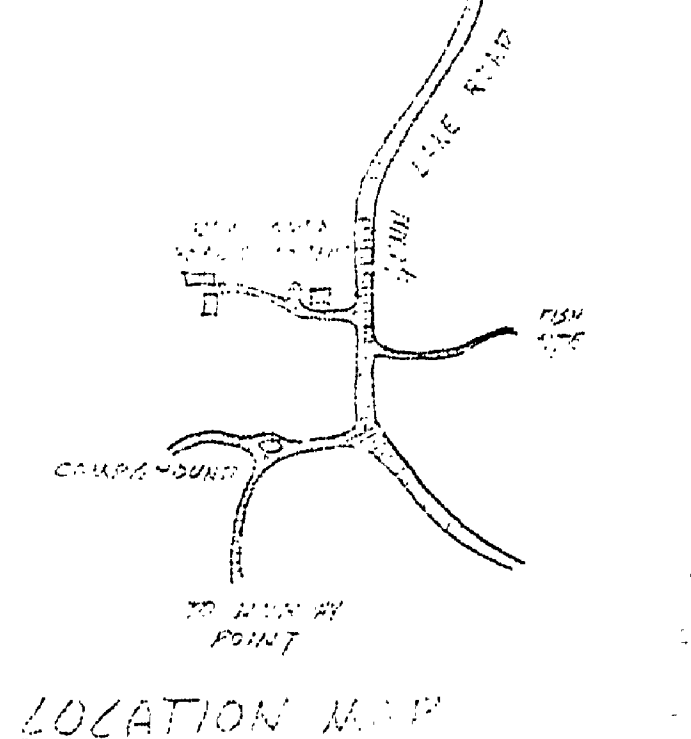
# AREA HEADQUARTERS YANKEE SPRINGS REC. AREA



**SECTION A-A (THRU ROAD)**  
SCALE: HORIZ. 1/8" = 1'-0"  
VERT. 1/8" = 1'-0"

**BENCH MARK DATA**

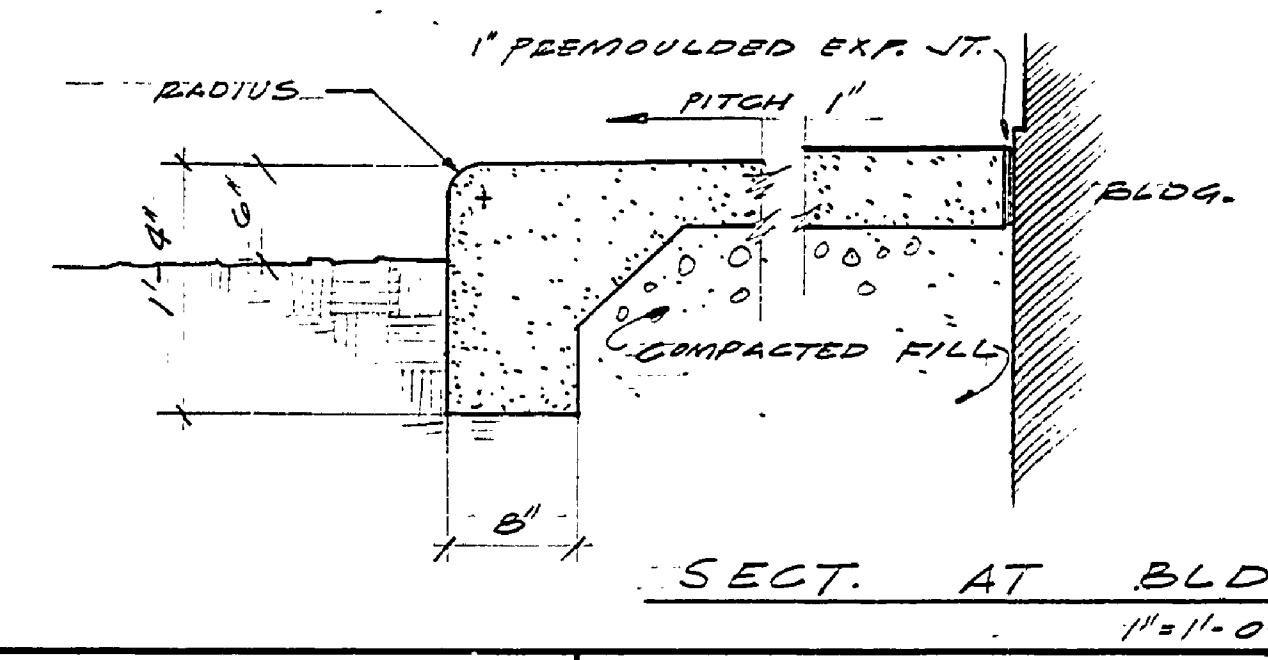
BM #30	EL. 755.27
P.R. NAIL, NUT & TAG, NW RT. 12" W. OAK, 4' L. STA. 0+91	
BM #31	EL. 751.33
P.R. NAIL, NUT & TAG, N. RT. 18" W. OAK 1' L. STA. 0+15	



**WITNESSES**

POT. 0+40.00	3 1/2" PIPE	PT. C	36" PIPE
SOUTH 69°-12' W. OAK (BM #30)		S 09° E - 34.6' - 18" W. OAK (BM #31)	
NORTH 71° - 12' RED OAK		N 36.4' 20" W. PINE	

NOTE - VEGETATIVE COVER OF SITE IS AS FOLLOWS  
BRUSH TO 4" DIA. - 1/2 OR LESS  
4" TO 12" DIA. TREES - AT 10'-O.C. OR LESS  
12" TO 24" DIA. OR LARGER TREES - AT 20' O.C. OR MORE



**S I T E P L A N**

NOTE: WALKS ARE 3" THICK CONC. W/GR.#10-10 W.W. MESH

BUILDING COMMITTEE APPROVAL	
BY <i>H.C. Michener</i>	DATE 4-1-68
RECOMMENDED FOR APPROVAL	W.N.C. 10-25-68
RECOMMENDED BY APPROVAL	<i>E. P. Patti</i> 6-9-69
DESIGNED BY	<i>Robert O. Dodge</i> 6-30-69
DEPARTMENT OF NATURAL RESOURCES	
APPROVED	<i>H.C. Michener</i> 6-23-69
PLAN NO.	PROJECT NUMBER
APPROVED: <i>Robert O. Dodge</i> 10-16-69	
CHIEF, PARKS DIVISION	DATE
MICHIGAN DEPARTMENT OF CONSERVATION	

SURVEYED BY	BLISSILL	6-67	DRAWN BY	M.J. McANNIS	7/67	NO.	DATE	BY	REVISIONS	NO.	DATE	BY	REVISIONS	MICHIGAN DEPARTMENT OF CONSERVATION	YANKEE SPRINGS RECREATION AREA	SHEET NO. 1 OF 6	FOR PROJECT NO. 32-110-76-249A-004-6-1	SHEET 1 OF 6	PLAN NO. A1430
DESIGNED BY		DATE	CHECKED BY	SYLCC	10/67	1.	10/67	VP	ENTRANCE	3.	7/69	VP	CON. CLEAN-UP						
					10/68	2.	10/68	VP	MECHANICAL	4.	12-71	D.B.	POWER LINES						