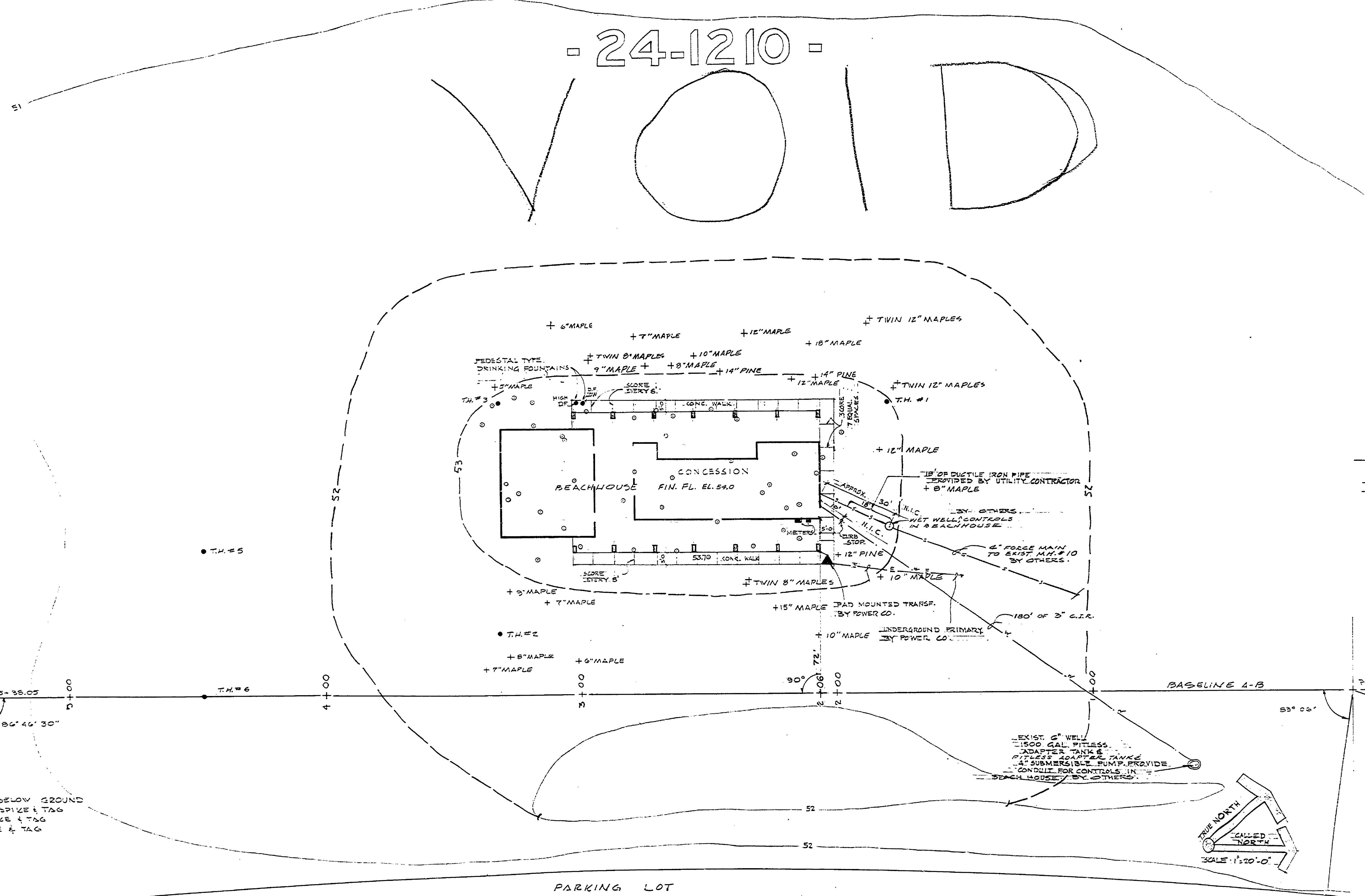


# YANKEE SPRINGS RECREATION AREA

## BEACHHOUSE CONCESSION BUILDING

- 24-1210 -



DRAWING SCHEDULE	
SHEET NO.	DESCRIPTION
1	SITE PLAN
2	FOUNDATION-BORINGS-PLINGS-BEAMS
3	FOUNDATION-SLAB-BEAM-SOFFIT-FRAME-DETAILS
4	FLOOR PLAN
5	ROOF FRAMING PLAN
6	ELEVATIONS & DETAILS
7	INTERIOR ELEVATIONS
8	DETAILS
9	DETAILS
10	CONCESSION-EQUIP. & FIXTURES-AIRSAN & EXHAUST
11	WATER SUPPLY SYSTEM
12	SANITARY PLUMBING
13	ELECTRICAL
14	STANDARD DRINKING FOUNTAIN

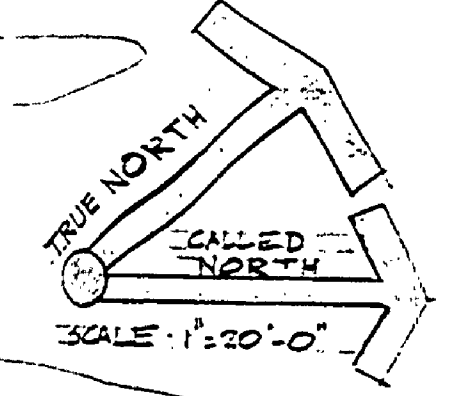
NOTE:  
 + TREES TO BE SAVED  
 ○ TREES TO BE REMOVED  
 --- EXIST. CONTOURS  
 - - - PROP. CONTOURS

POB PT. 'A' 3/4" PIPE 1" BELOW GROUND  
 N 30° 30' E 37.33' 5" MAPLE SPIKE & TAG  
 N 40° W 51.07' 9" MAPLE SPIKE & TAG  
 S 8° 30' W 20.09' 6" MAPLE SPIKE & TAG

B.M. EL. 52.72  
 T&T STA. 5-24.26"  
 BEECH, N. ROOT, PK NUT &  
 B.M. TAG

POE. PT. 'B' 3/4" PIPE 1" BELOW GROUND  
 S 52° 30' E, EB. 12' 11" MAPLE, SPIKE & TAG  
 N 59° E 57.12' 24" OAK, SPIKE & TAG  
 N 69° V 11.53' 8" ASH, SPIKE & TAG

EXIST. 6" WELL  
 1500 GAL. PITLESS  
 ADAPTER TANK &  
 PIPES ADAPTER TANK  
 4" SUBMERSIBLE PUMP, PROVIDE  
 CONDUIT FOR CONTROLS IN  
 BEACH HOUSE, BY OTHERS.



BUILDING COMMITTEE APPROVAL	
BY: <i>H.C. Madson</i>	DATE: _____
RECOMMENDED FOR APPROVAL: <i>V.D.C. 4-6-72</i>	
RECOMMENDED FOR APPROVAL: <i>E.P. Potts 4-20-72</i>	
DIVISION/REGION APPROVAL	
BY: <i>D. H. ...</i>	DATE: 4-26-72
APPROVED: <i>H.C. Madson 4-26-72</i>	

SURVEYED BY	DRAWN BY <i>G. DONKINS</i>	NO. 1. DATE	BY	REVISIONS	NO. 3. DATE	BY	REVISIONS	MICHIGAN DEPARTMENT OF NATURAL RESOURCES	SITE PLAN SHEET TITLE	YANKEE SPRINGS RECREATION AREA AREA OR PARK	PROJECT NO. 24-1210
DESIGNED BY	CHECKED BY	NO. 2. DATE	BY	REVISIONS	NO. 4. DATE	BY	REVISIONS			BEACHHOUSE & CONCESSION BLDG. PROJECT	SHEET 1 OF 14 PLAN NO. A-145