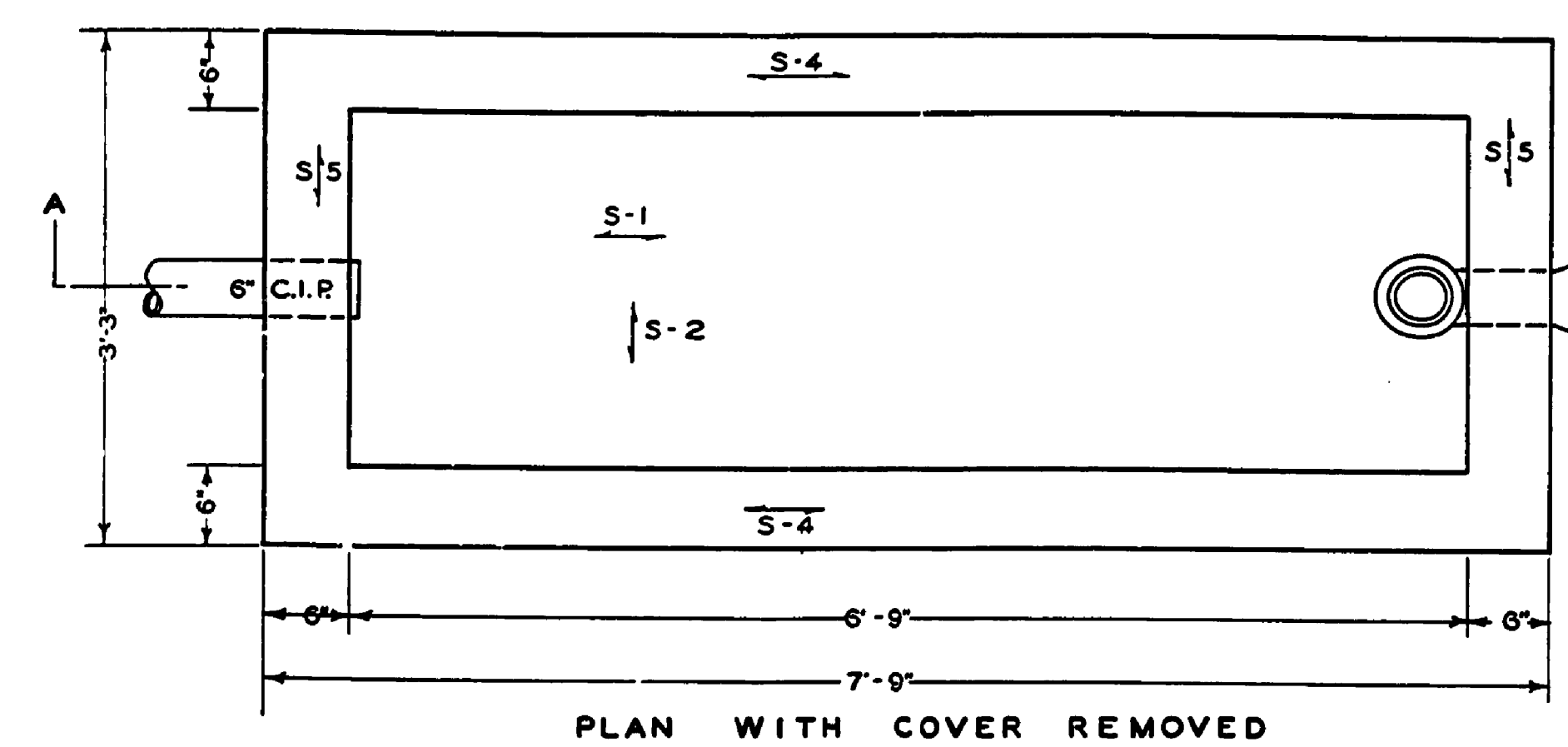
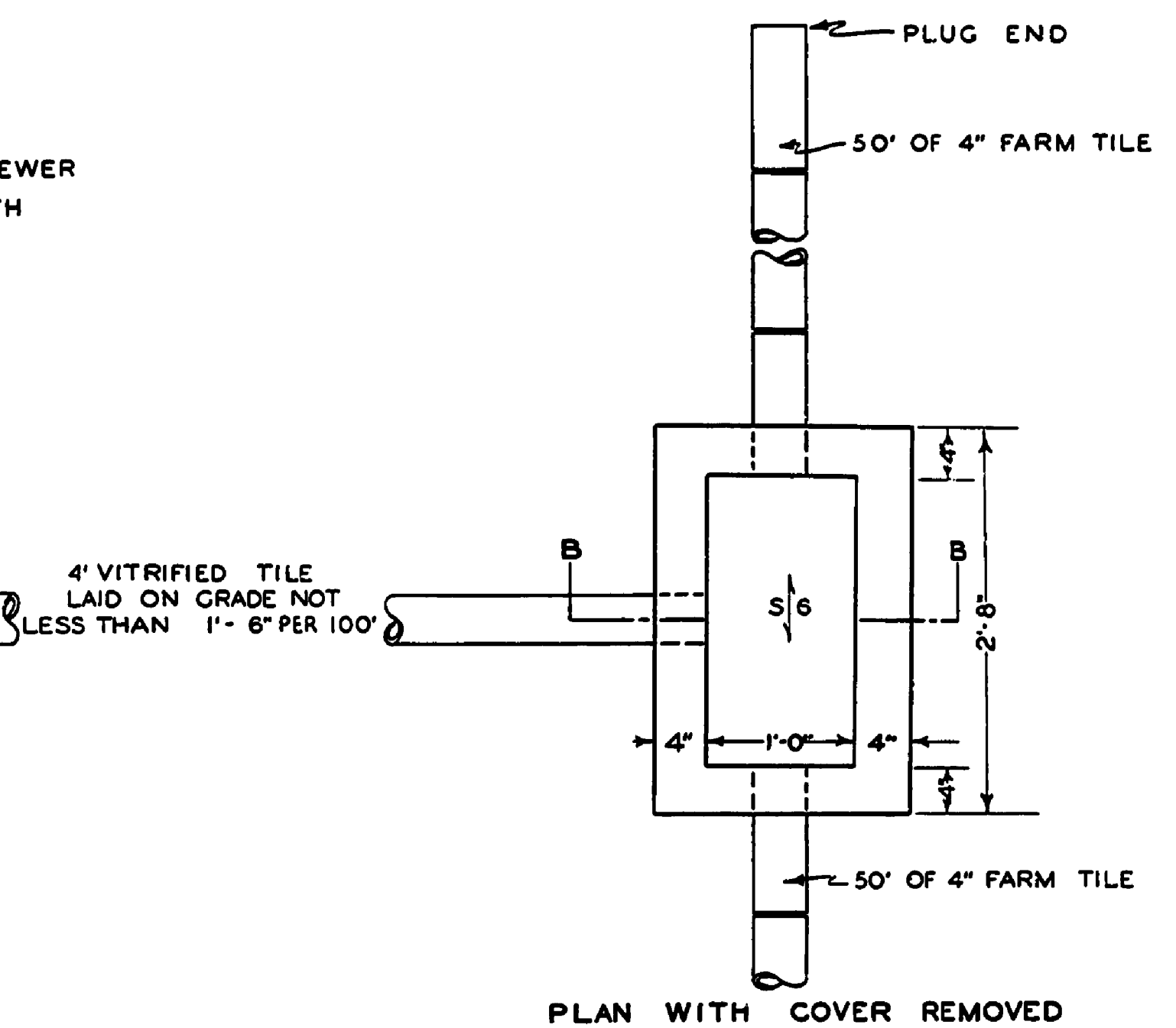


NOTE: ALL BELL AND SPIGOT VITRIFIED SEWER LINE JOINTS TO BE MADE UP WITH OAKUM AND NEAT CEMENT.

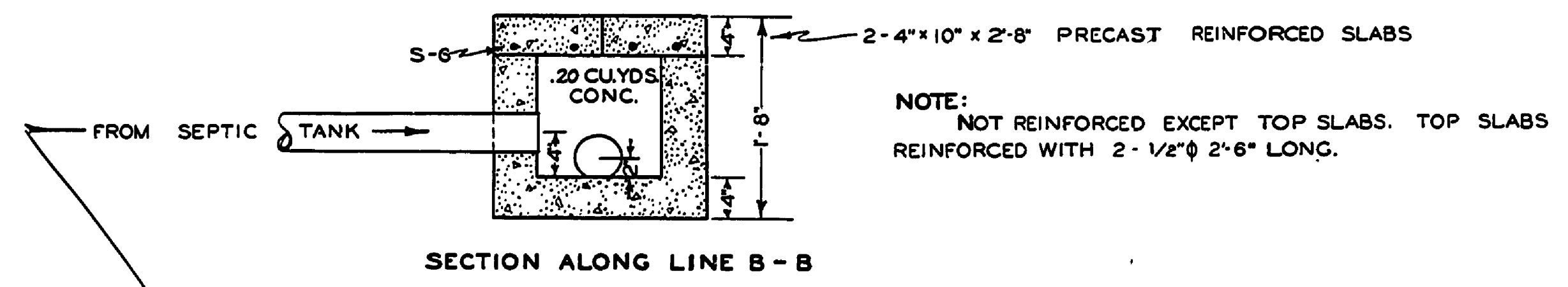
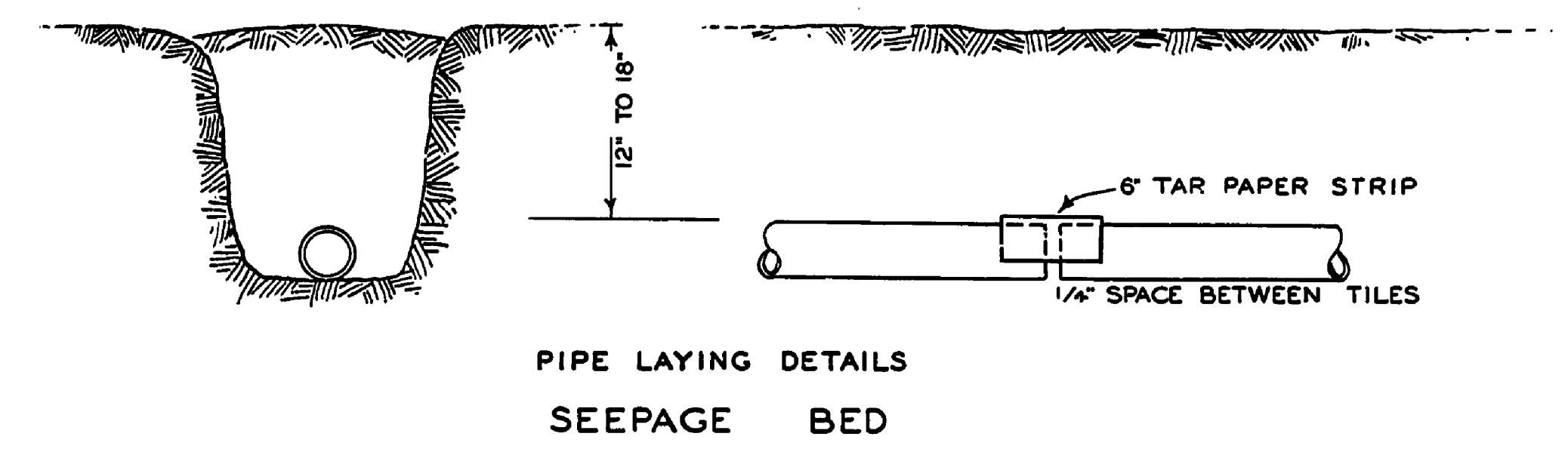


PLAN WITH COVER REMOVED

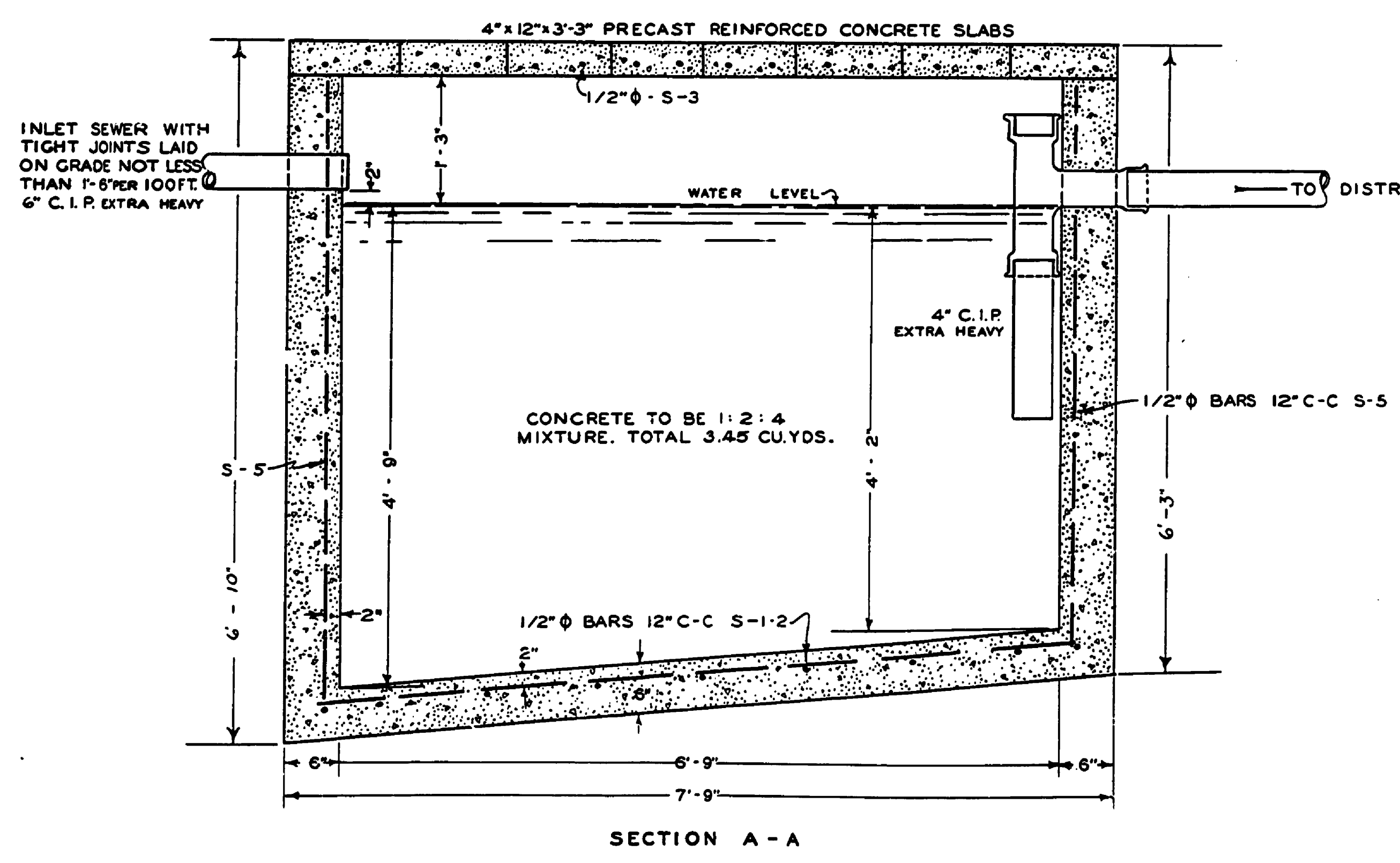


PLAN WITH COVER REMOVED

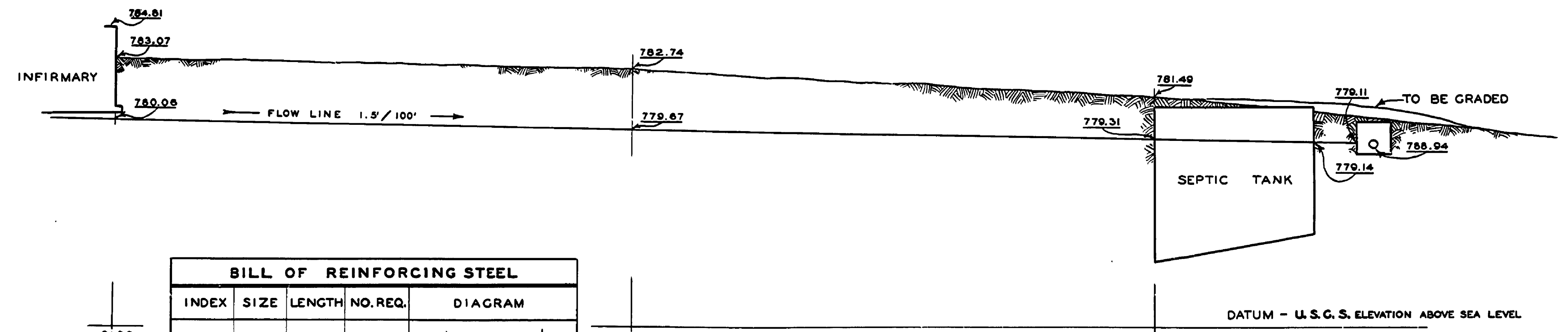
NOTE: DISTRIBUTION FIELD TO CONSIST OF A TOTAL OF 100' OF 4" V.I.T. TILE 1/8" BETWEEN EACH TILE AND JOINTS COVERED WITH TAR PAPER. EACH END OF DISTRIBUTION FIELD TO BE PLUGGED. DISTRIBUTION LINES TO BE LAID TO A GRADE OF 2' TO 100'; EACH LINE IS TO FOLLOW CONTOUR OF THE GROUND.



SECTION ALONG LINE B - B
DISTRIBUTION BOX & SEEPAGE FIELD



SECTION A - A
SEPTIC TANK



PROFILE OF SEWER LINE
SKETCH - NOT TO SCALE

BILL OF REINFORCING STEEL				
INDEX	SIZE	LENGTH	NO. REQ.	DIAGRAM
S-1	1/2" #	9'-6"	5	1'-2" 7'-2" 1'-2"
S-2	1/2" #	4'-11"	9	1'-2" 2'-7" 1'-2"
S-3	1/2" #	2'-9"	16	STRAIGHT
S-4	1/2" #	5'-5"	2	STRAIGHT
		5'-6"	2	
		5'-8"	2	
		5'-9"	2	
		5'-10"	2	
S-5	1/2" #	6'-0"	5	STRAIGHT
		5'-5"	5	
S-6	1/2" #	2'-4"	4	STRAIGHT
TOTAL LENGTH OF STEEL - 282'-8"				

CAPACITY OF SYSTEM 500 GALS.

MICH. DEPT. OF CONSERVATION
IN COOPERATION WITH
UNITED STATES
DEPARTMENT OF THE INTERIOR
NATIONAL PARK SERVICE

YANKEE SPRINGS PROJECT
SEWAGE DISPOSAL SYSTEM
INFIRMARY, LONG LAKE
JOB 67

DATE 11-8-68

PREPARED AND APPROVED BY: _____ DATE _____
PARK AUTHORITY OR SPONSOR

INSPECTOR _____ DATE _____

TWP # 67-68-69

E-103