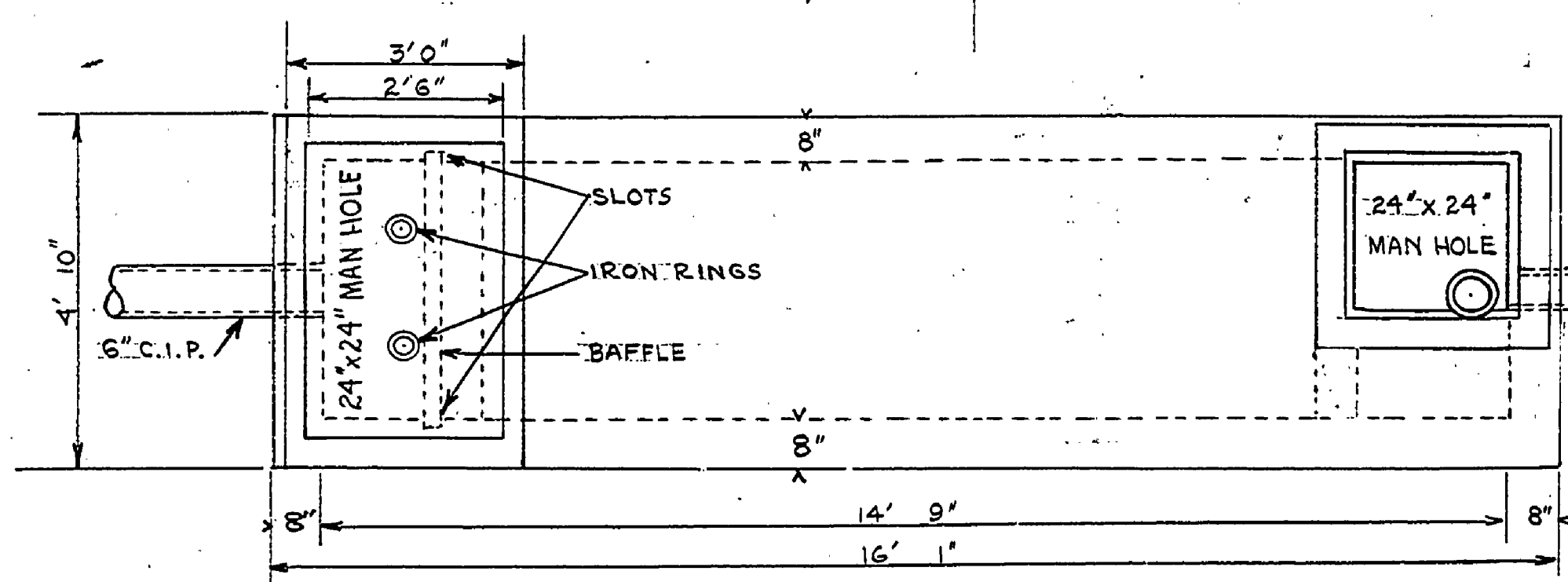
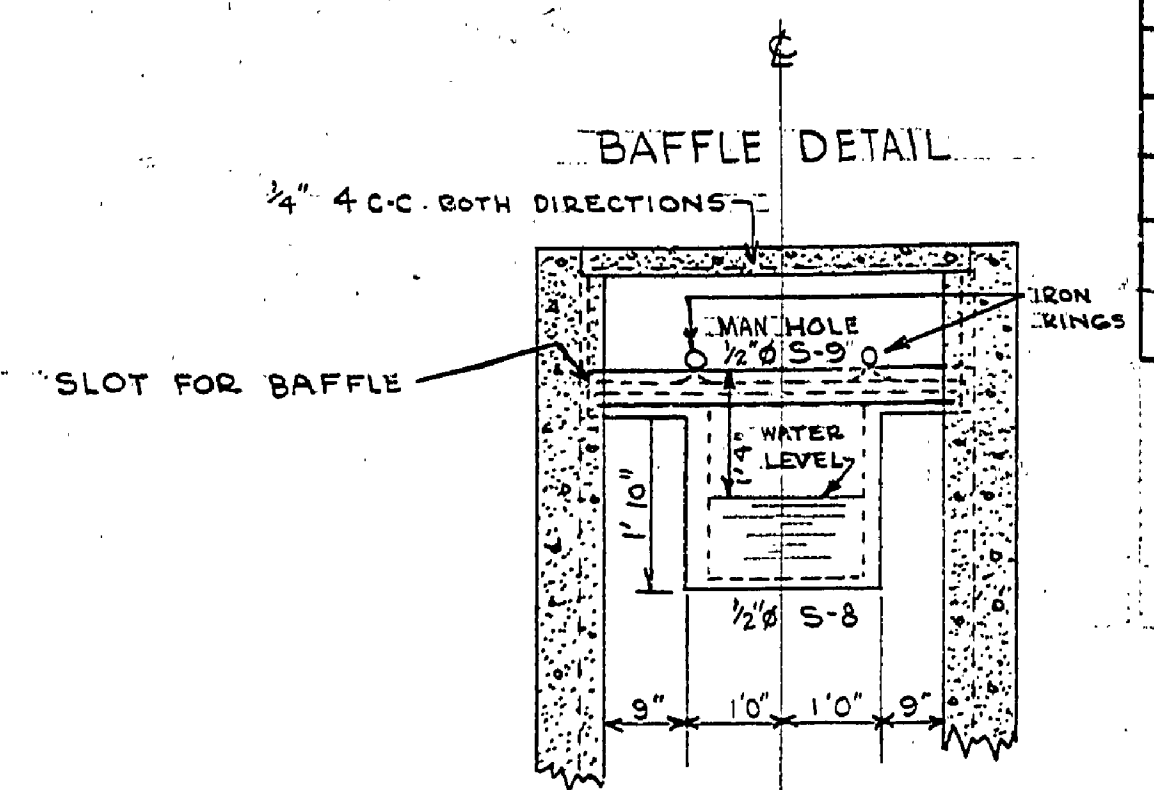
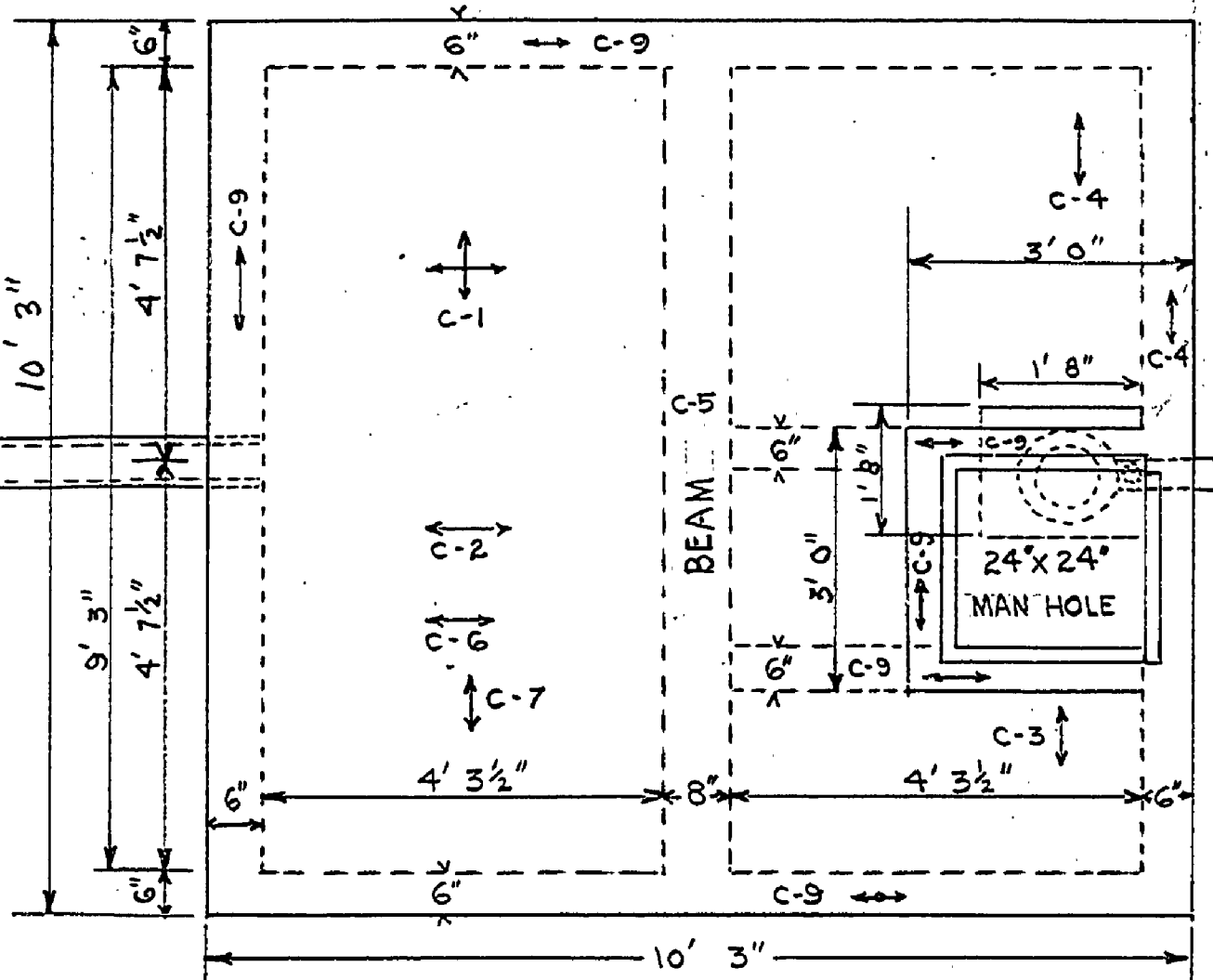


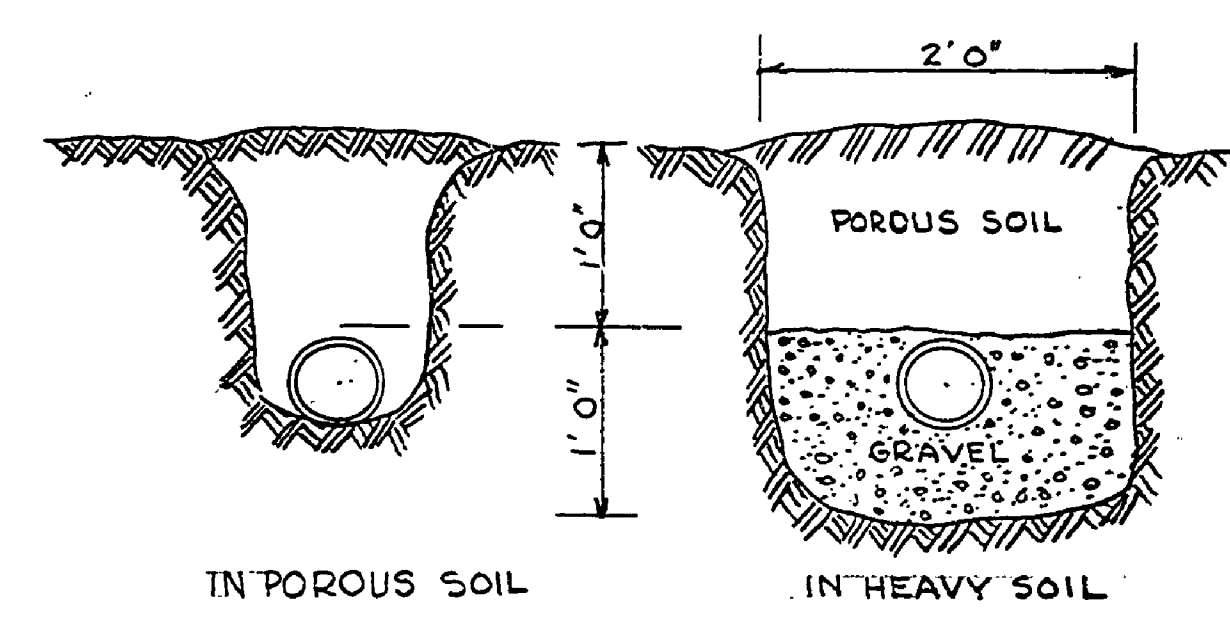
| INDEX | SIZE | LENGTH | NO. REQ. | DIAGRAM | INDEX | SIZE | LENGTH | NO. REQ. | DIAGRAM |
|-------|------|---------|----------|------------------|-------|------|---------|----------|--------------------|
| S-1 | 3/8" | 15' 15" | 1 | 1/2" 12' 9" 1/2" | C-1 | 3/8" | 11' 11" | 24 | 1/2" 9' 7" 1/2" |
| S-2 | 3/8" | 12' 5" | 1 | 1/2" 10' 3" 1/2" | C-2 | 3/8" | 9' 10" | 3 | 1/2" 7' 3" 1/2" |
| S-3 | 3/8" | 6' 2" | 27 | 1/2" 3' 10" 1/2" | C-3 | 3/8" | 4' 10" | 3 | 1/2" 2' 3" 1/2" |
| S-4 | 1/2" | 17' 5" | 2 | 1/2" 15' 1" 1/2" | C-4 | 1/2" | 7' 0" | 10 | 1/2" 4' 5" 1/2" |
| S-5 | 1/2" | 6' 2" | 39 | 1/2" 5' 10" 1/2" | C-5 | 1/2" | 10' 1" | 3 | STRAIGHT |
| S-6 | 1/2" | 9' 5" | 9 | STRAIGHT | C-6 | 1/2" | 14' 11" | 7 | 29' 9' 7" 1/2" 11" |
| S-7 | 1/2" | 14' 11" | 8 | STRAIGHT | C-7 | 1/2" | 15' 11" | 7 | 29' 9' 7" 1/2" 11" |
| S-8 | 1/2" | 8' 3" | 58 | STRAIGHT | C-8 | 1/2" | 14' 6" | 8 | STRAIGHT |
| | | | | | C-9 | 1/2" | 9' 7" | 14 | STRAIGHT |
| | | | | | | 1/2" | 20' 0" | 10 | STRAIGHT |
| | | | | | | 3/8" | 20' 0" | 6 | STRAIGHT |



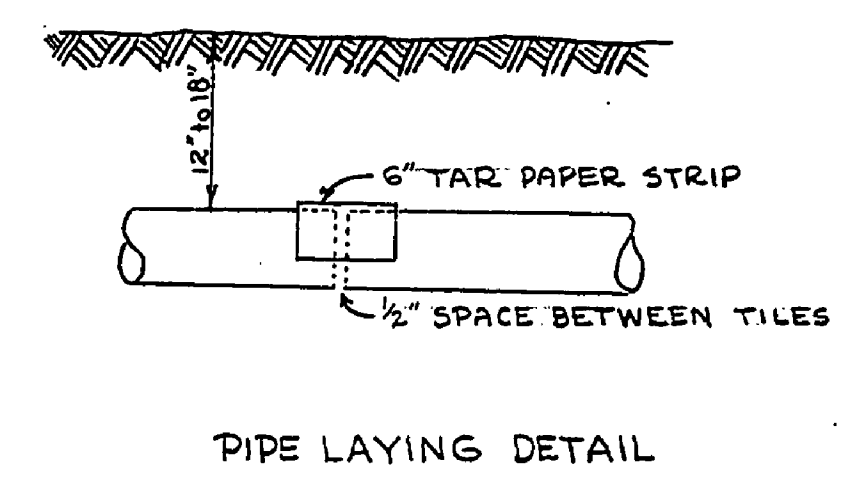
SEPTIC TANK



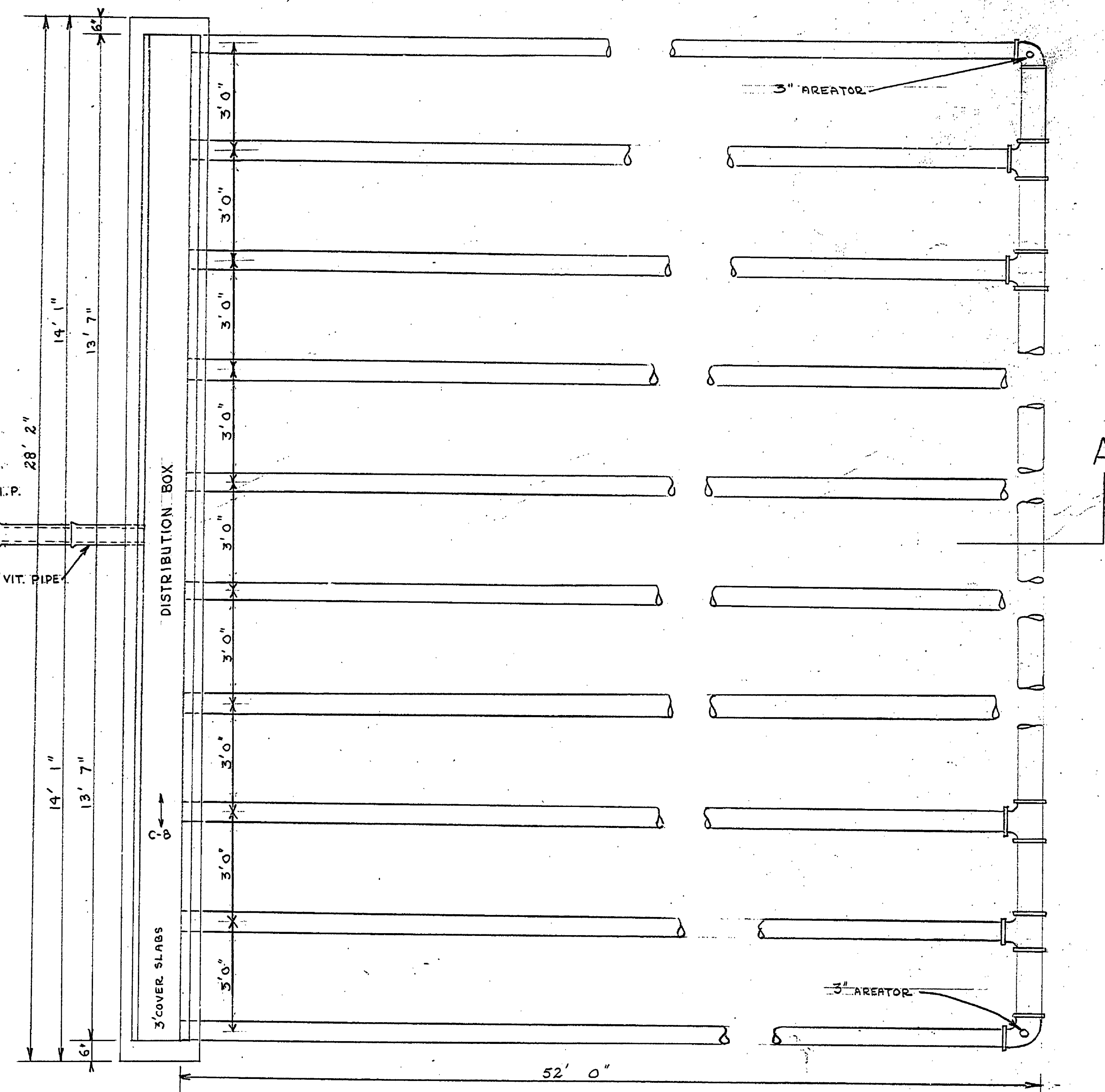
SIPHON CHAMBER



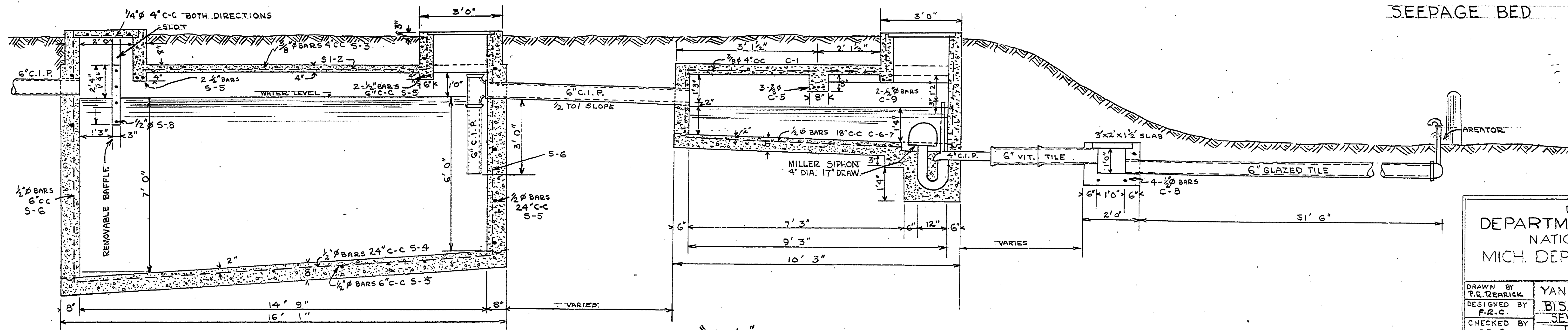
SEEPAGE BED DETAILS



PIPE LAYING DETAIL



SEEPAGE BED



SECTION "A-A"

CAPACITY OF SYSTEM 2250 GALS.

UNITED STATES
DEPARTMENT OF THE INTERIOR
NATIONAL PARK SERVICE
MICH. DEPT. OF CONSERVATION
COOPERATING

DRAWN BY: P.R. REARICK
DESIGNED BY: F.R.C.
CHECKED BY: F.R.C.

YANKEE SPRINGS AREA
BISEXUAL LATRINE
SEWAGE DISPOSAL
DAY USE AREA

PLAN YS-90-111
SCALE 1/2"=1'
DATE 8/23/40

RECOMMENDED BY: Frank R. [Signature]
RECOMMENDED DATE: 8/26/40
APPROVED BY: [Signature]
APPROVED BY: PARK AUTHORITY OR SPONSOR
APPROVED BY: REGIONAL DIRECTOR

REVISED 9/19/40. F.R.C.

Job # 240

E-105