

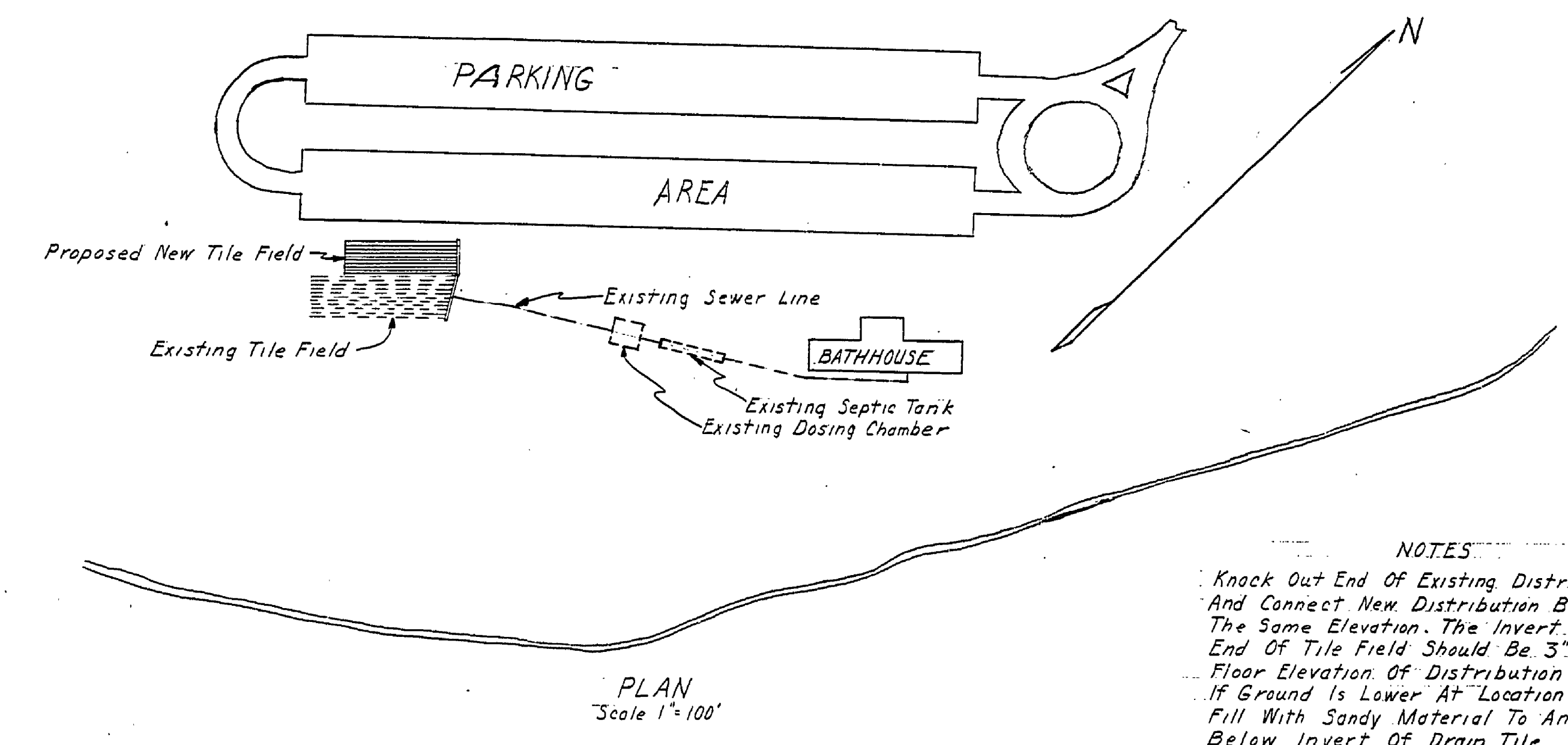
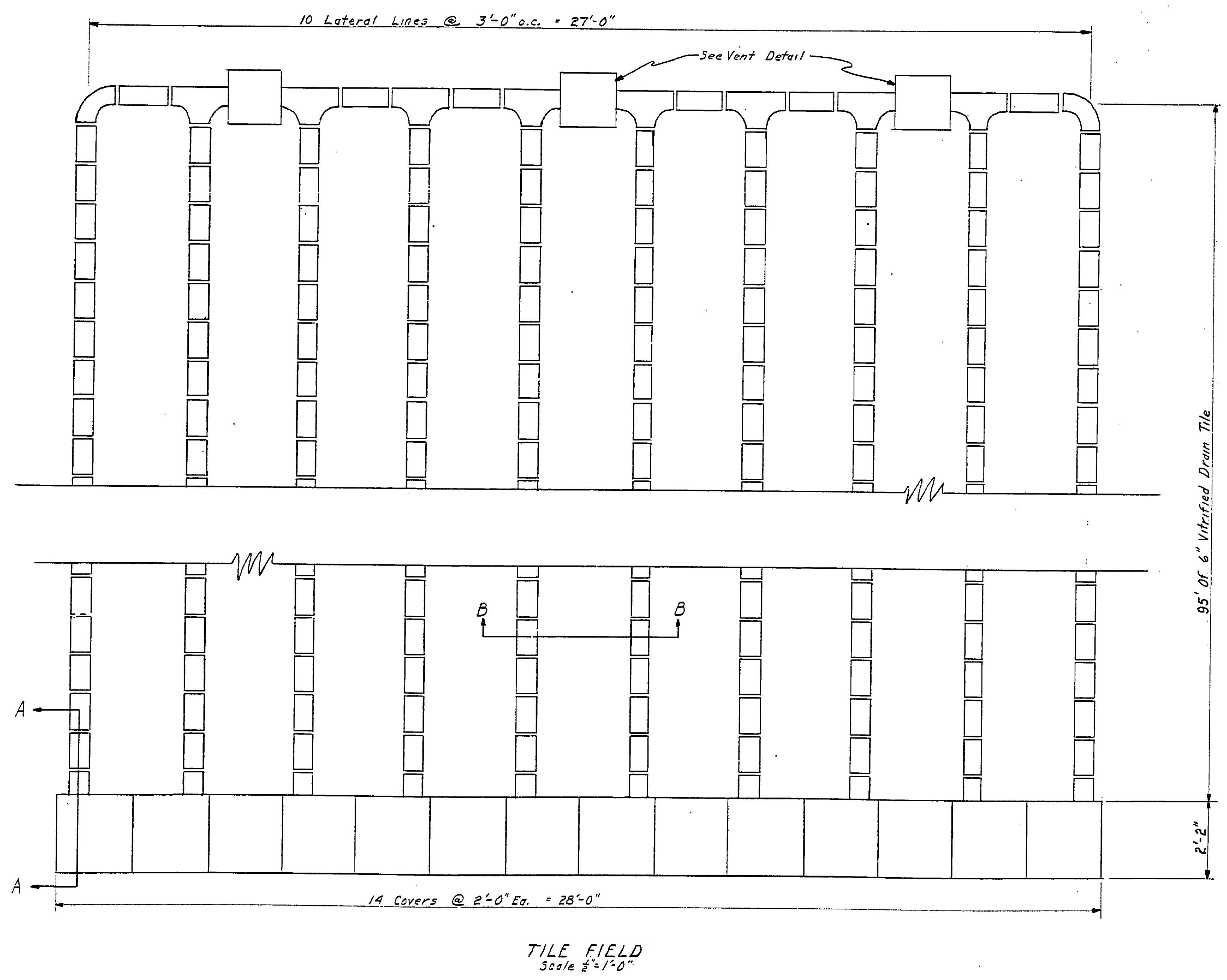
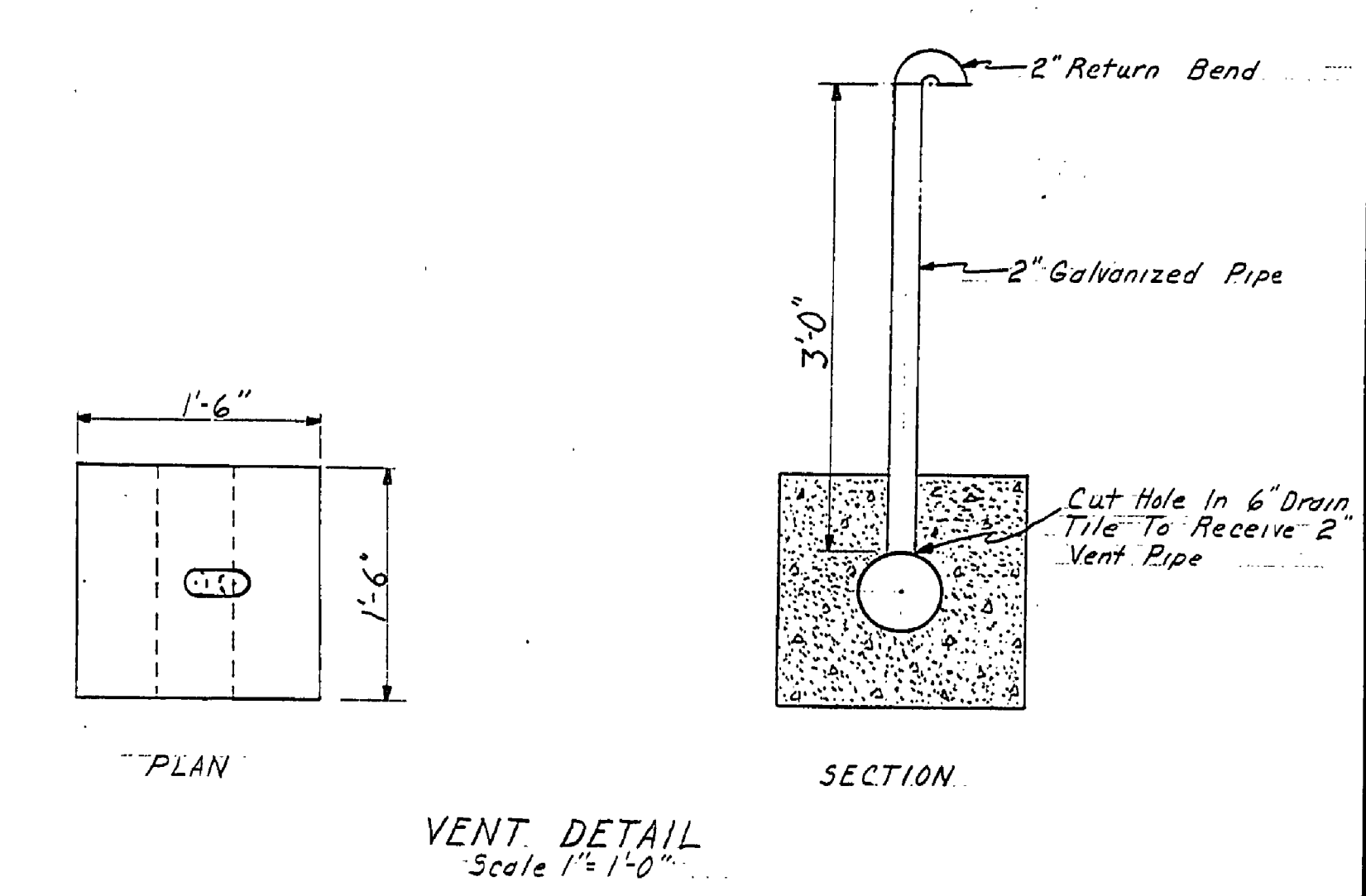
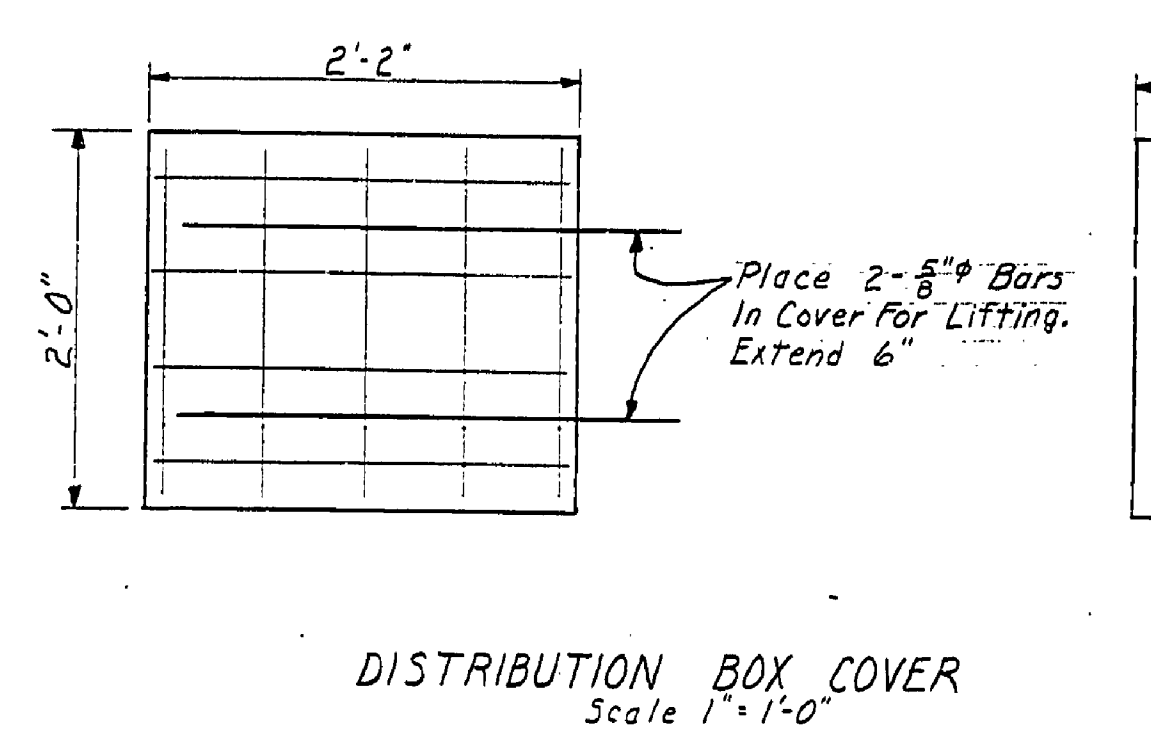
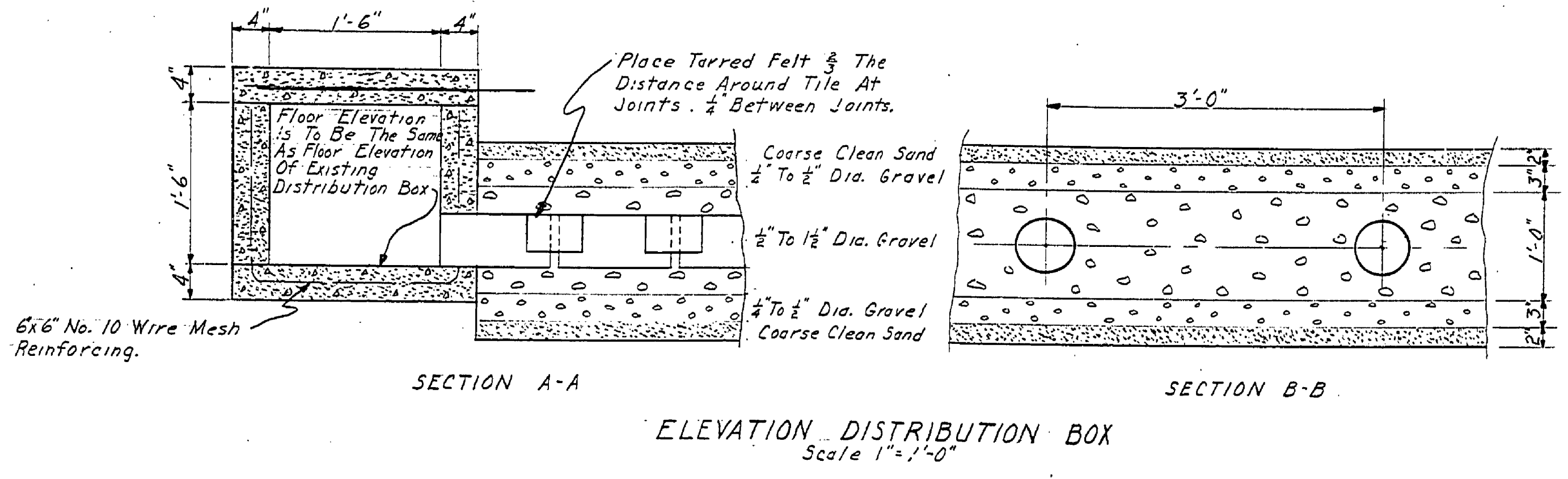
REVISIONS		BY		DATE	
4					
5					
6					

REVIEWED BY SECTIONS		DATE	
ARCHITECTURAL	J.T.R.	3-14-53	
ENGINEERING	H.C.M.	11 MAR 53	
LANDSCAPE	J.T.R.	3-17-53	

APPROVED BY		DATE	
ASSISTANT CHIEF IN CHARGE	<i>[Signature]</i>	3-22-53	
OF DESIGN			

DRAWN BY		DATE	
E.H.G.		10 March 1953	

CHECKED BY		DATE	
E.I.P.			



NOTES
 Knock Out End Of Existing Distribution Box And Connect New Distribution Box To It At The Same Elevation. The Invert Elevation At End Of Tile Field Should Be 3\"/>