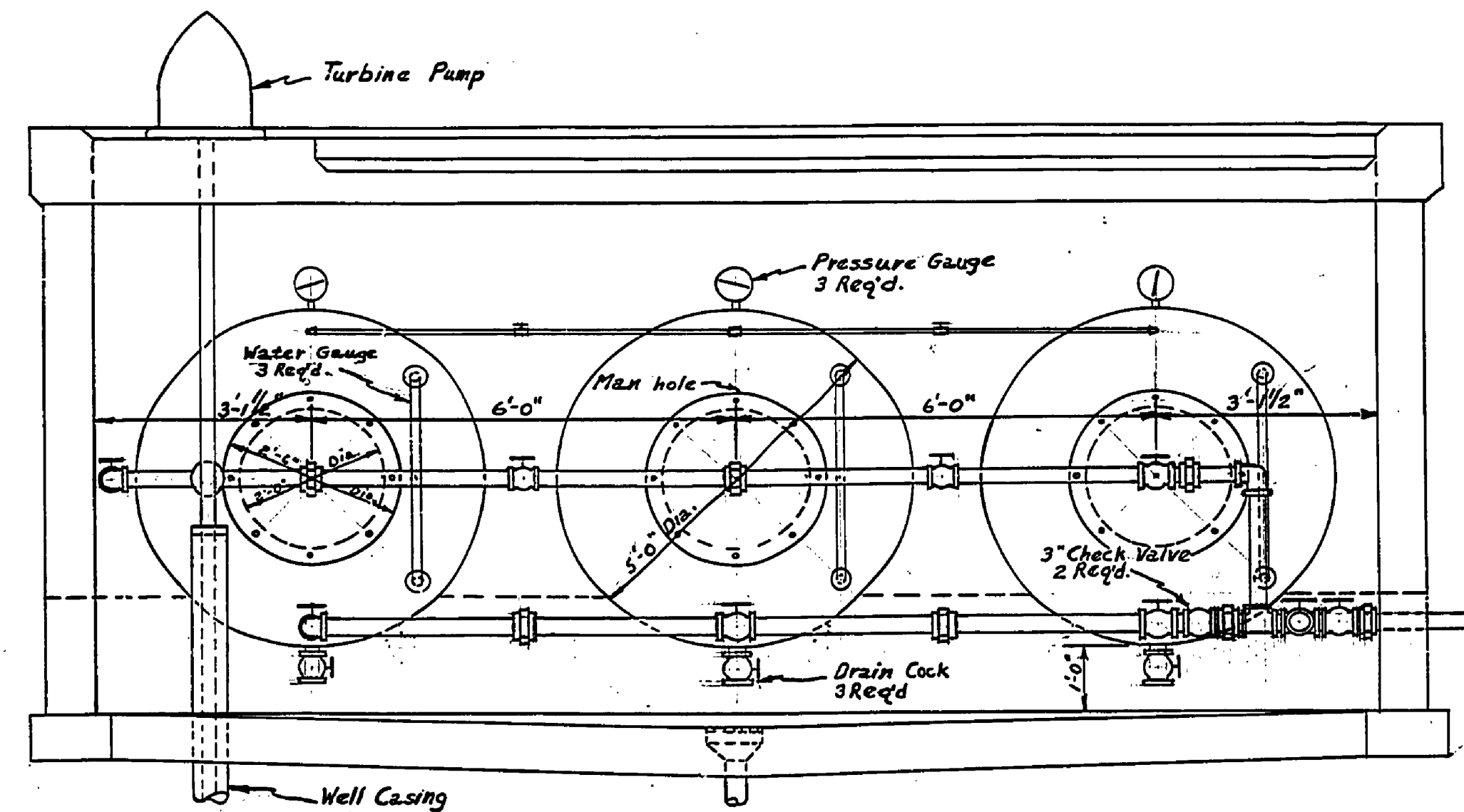
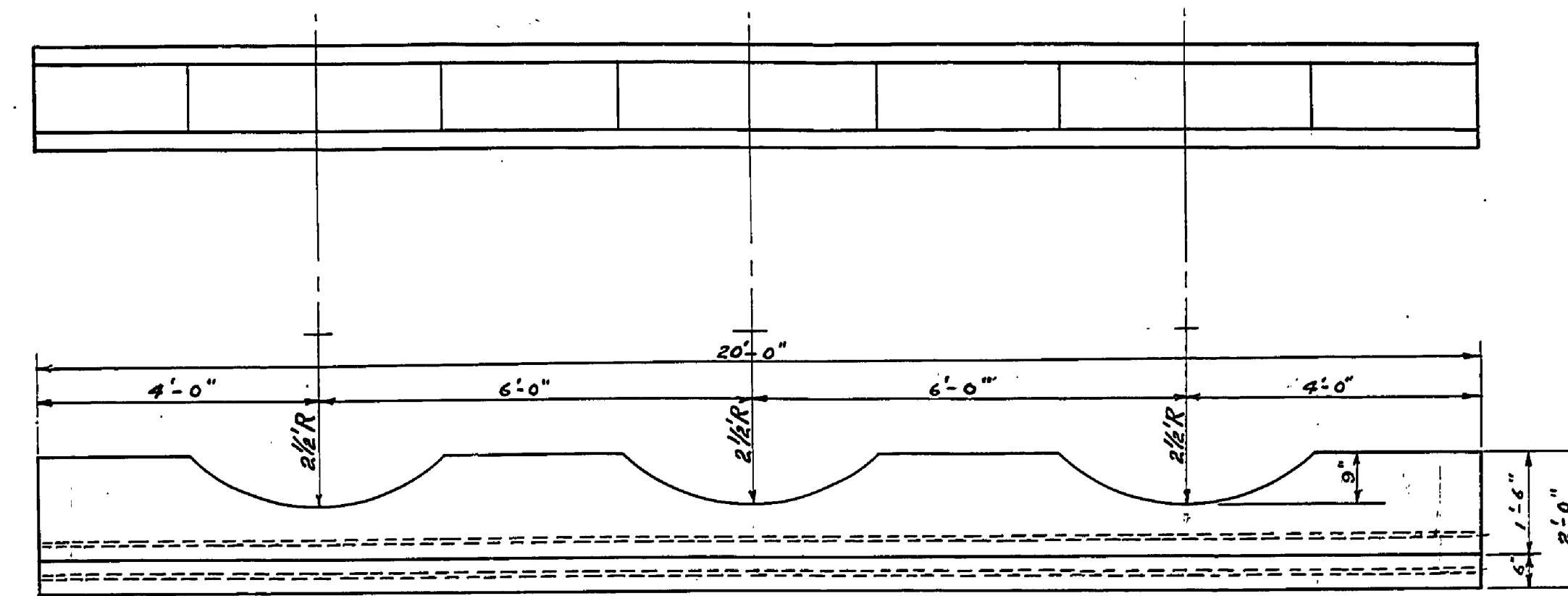


PLAN



ELEVATION



REINFORCED CONCRETE SADDLE

Saddles to be placed: 1As shown in plan, and 2 others equally spaced along tanks.
1" Round reinforcing steel bars to be placed as shown.

NOTE: 3" Galvanized wrought iron pipe to be used except where otherwise specified.
Back of tanks to be set 1" higher than front for drainage purposes.
Manhole may vary from that shown provided a minimum opening of 18"x24" is used, and opening is located in concave end.
Detailed elevations are shown on architect's drawing of pump house.

Approved by Michigan Dept. of Health.

Director Bureau of Engineering

Approved by Michigan Conservation Dept.

UNITED STATES DEPARTMENT OF THE INTERIOR NATIONAL PARK SERVICE COOPERATING WITH MICHIGAN DEPARTMENT OF CONSERVATION		
DRAWN BY F.J.C.	YANKEE SPRINGS LONG LAKE PUMP ROOM DETAILS	PLAN: 90-67 NO. 1 SCALE: 1/2" = 1'
DESIGNED BY F.J.C.		DESIGNATION OF CASE R.D.P.-MI-6
CHECKED BY F.L.H.		DATE: 8-28-37
PREPARED BY	DATE: May 1, 1937	
RECOMMENDED STATE PARK AUTHORITY OR SPONSOR	DATE	
INSPECTOR	DATE	
RECOMMENDED REGIONAL OFFICER	DATE	
APPROVED BY ASSISTANT DIRECTOR	DATE	

JOB # 29 SEE JOB # 28-29-30 FOR
MARI LEO FORCING