

DRAIN TO LOW LEVEL AREA - EL. ABOUT 56.0
4" VIT. TILE

4" GATE VALVE WITH 4" SOIL PIPE (FITTED WITH COVER) AND SHUT-OFF KEY TO GROUND SURFACE.

4" W. I. PIPE
EL. BOTTOM, OUTSIDE = 56.52

EL. OF FLOW LINE = 57.10

TROUGH TO DRAIN
DEPTH AT DRAIN = 1"

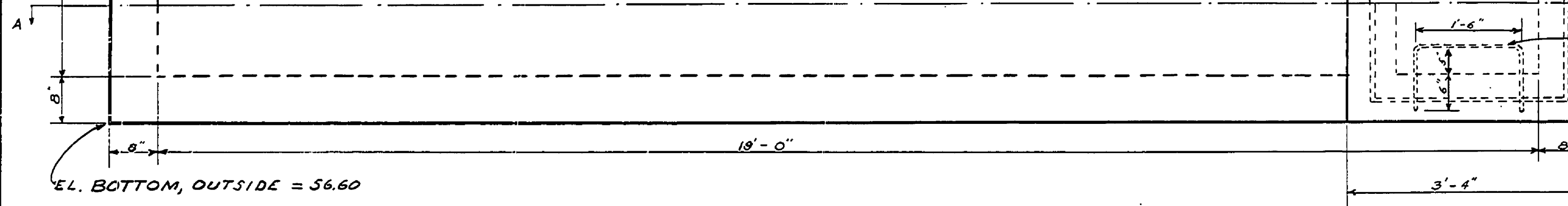
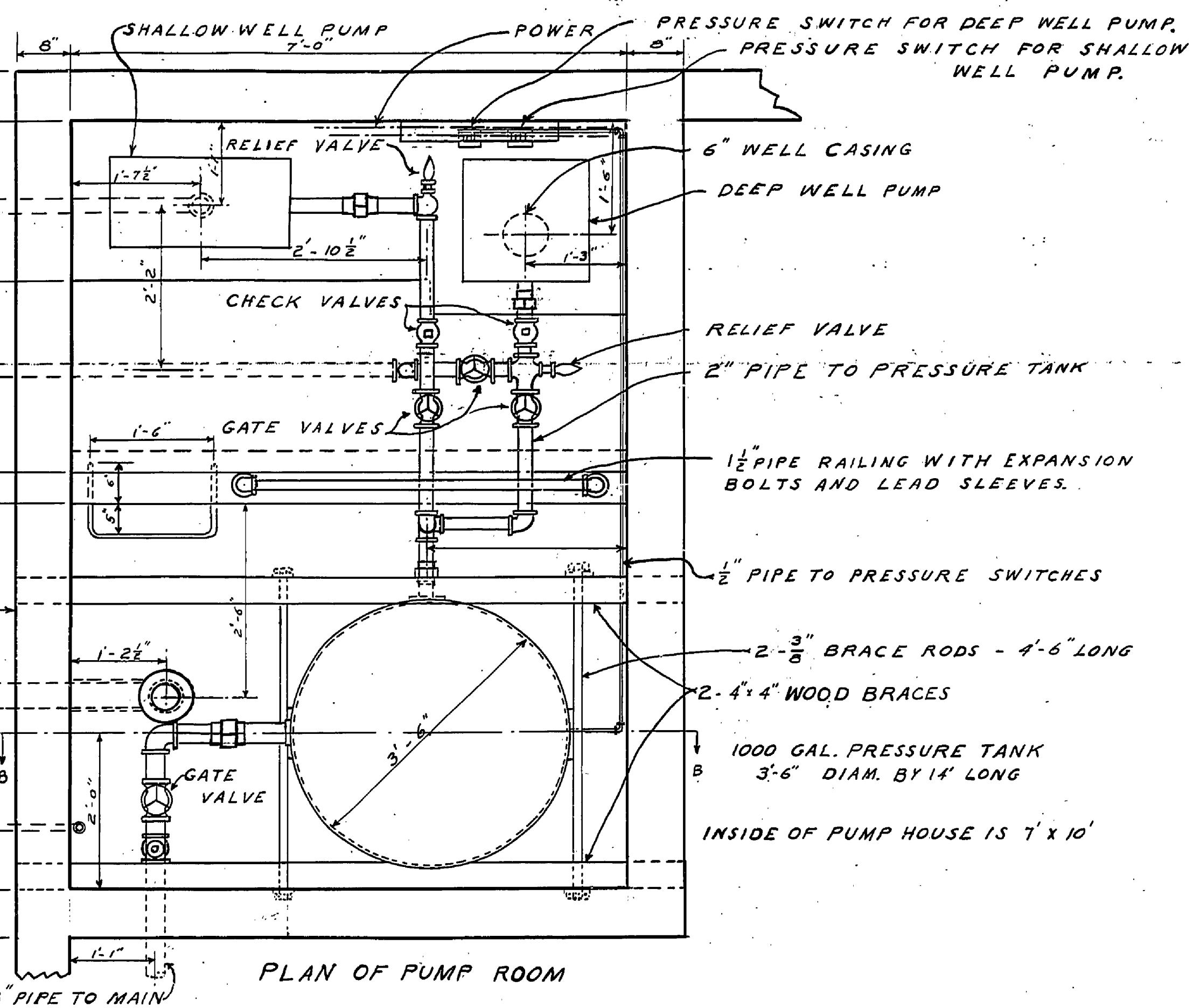
NOTE - THIS PLAN SHOWS THE RELATIVE ELEVATIONS OF STORAGE TANK AND PUMP ROOM AT THE MUD LAKE CAMP. THE ELEVATION OF THE BOTTOM OF THE STORAGE TANK IS TO BE SUCH THAT THERE CAN BE AN ADEQUATE DRAIN PIPE GRADIENT TO NEARBY LOW GROUND. AT THE MUD LAKE CAMP SITE THIS WILL NECESSITATE HAVING THE TOP OF THE TANK PROJECT ABOUT TWO FEET ABOVE EXISTING GROUND SURFACE, AND BANKING UP AROUND IT AS SHOWN ON THIS PLAN. AT THE OTHER CAMP SITES, BETTER DRAINAGE CONDITIONS WILL PERMIT LOWERING THE TANK IN RELATION TO EXISTING GROUND SURFACE SO THAT NO BANKING UP OF EARTH WILL BE NECESSARY.

NOTE - THE ELEVATIONS AT THE PUMP ROOM IN RELATION TO GROUND SURFACE WILL REMAIN CONSTANT FOR EACH CAMP SITE. HOWEVER, THIS GROUND ELEVATION WILL BE DIFFERENT AT EACH CAMP.

4" VIT TILE DRAIN
GRADE "1" IN 100' MIN.

NOTE - SIZE AND TYPE OF PUMPS - WILL NOT BE DETERMINED UNTIL AFTER WELL HAS BEEN DRILLED & DEVELOPED. THEIR COST AND SPECIFICATIONS WILL THEN BE SUBMITTED AS A SEPARATE JOB.

NOTE - THE FOLLOWING ITEMS ARE NOT INCLUDED IN THIS JOB, BEING A PART OF BUILDING JOB NO. 214A:
ALL CONCRETE WALLS & FLOOR OF PUMP ROOM.
STEEL LADDER IN PUMP ROOM.
4" DRAIN FROM PUMP ROOM OUT TO FIRST ELBOW.
ALL ELECTRIC WIRING.



FRAME TWO OF TWO of E-113
SHT. 1 of 1

MANHOLE COVER TO BE REINFORCED BOTH WAYS WITH 1/2" Ø SPACED 8" C. TO C.

LIFTING RINGS AND EYE-BOLTS OF 3/4" Ø STEEL

1 1/2" HALF ROUND AIR VENTS IN BOTTOM OF MANHOLE COVER 6" C. TO C. - ON ALL FOUR SIDES

NOTE - CONCRETE WALLS AND FLOOR OF PUMP ROOM TO BE REINFORCED WITH 1/2" Ø STEEL PLACED 15" C. TO C. BOTH WAYS.

