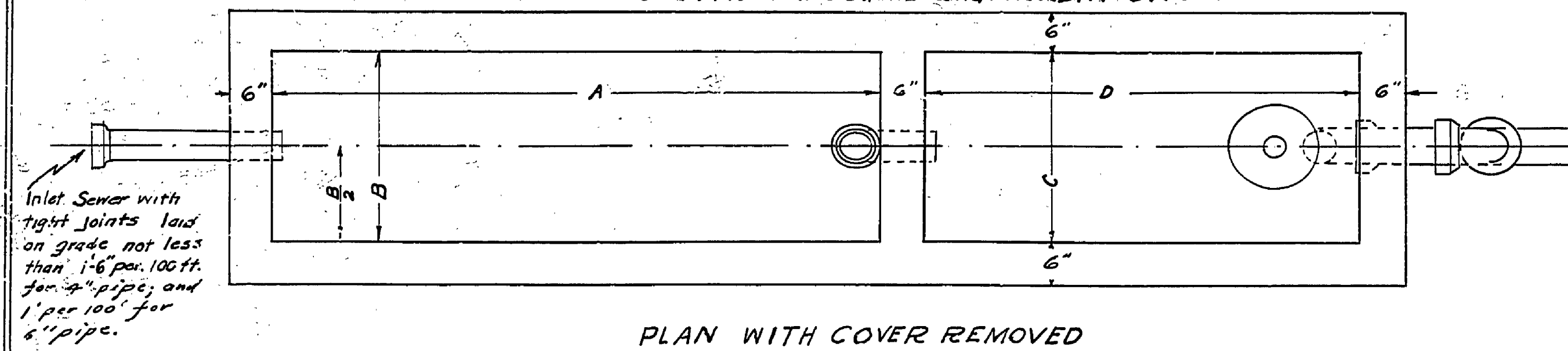
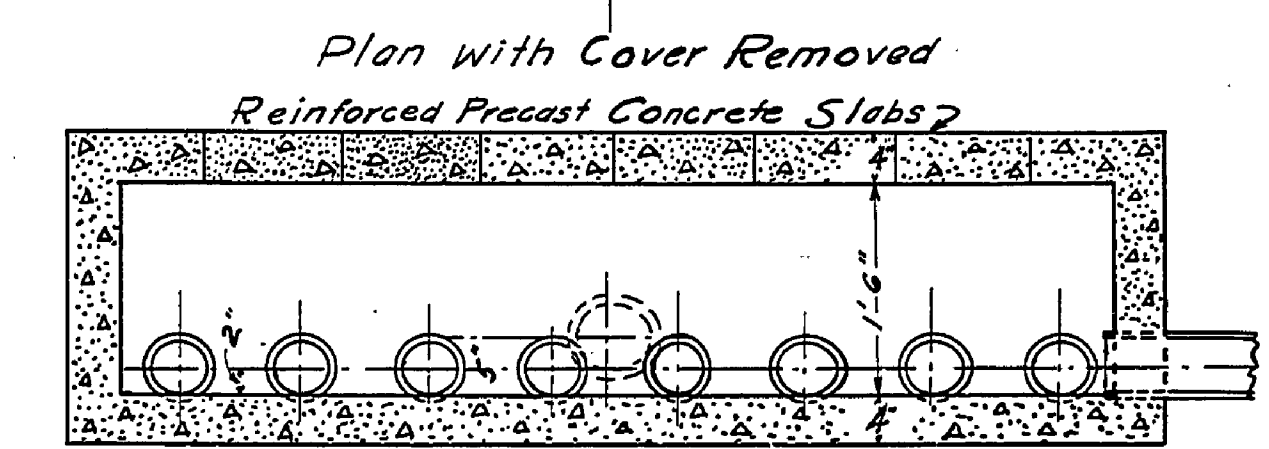
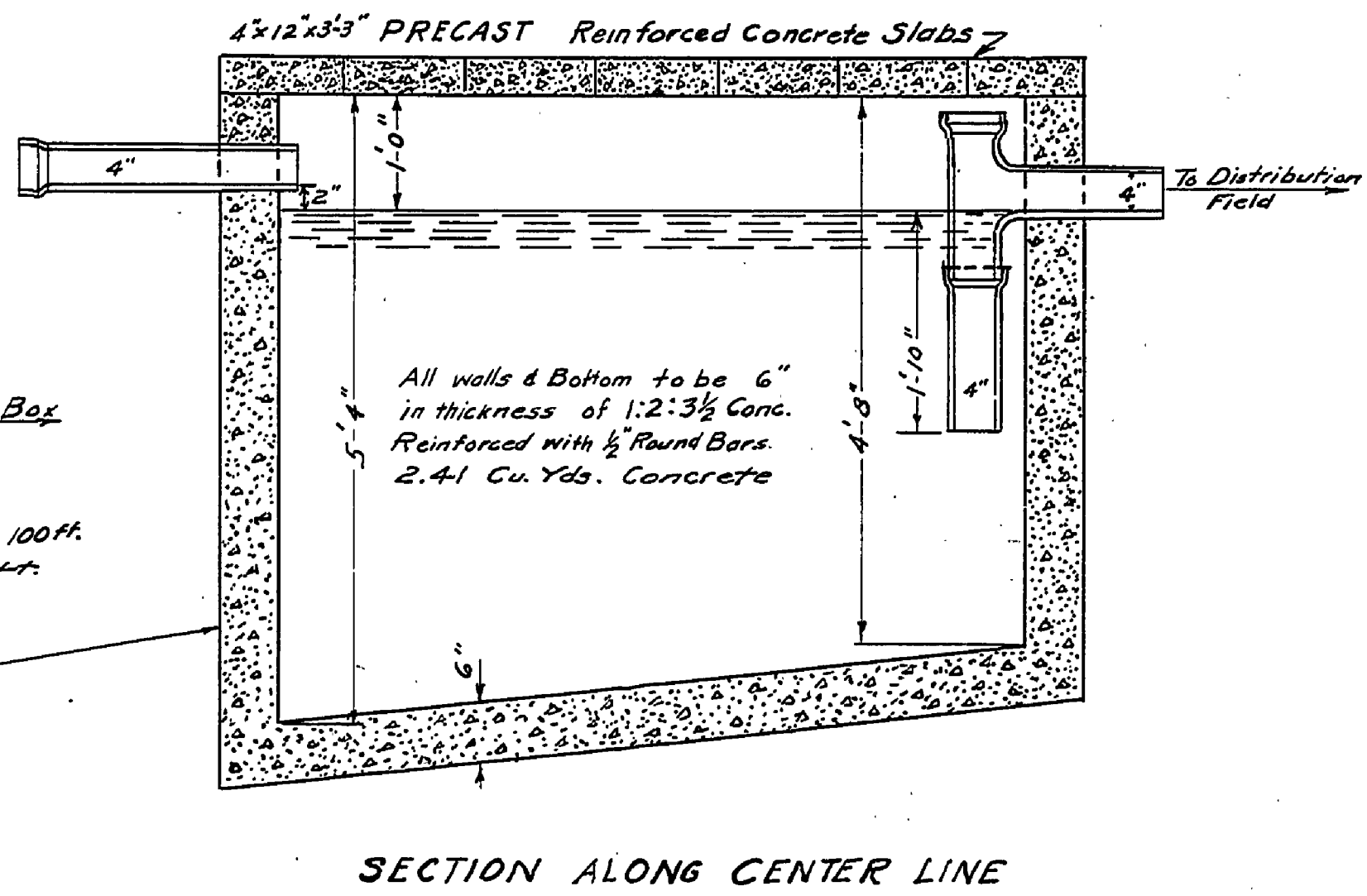
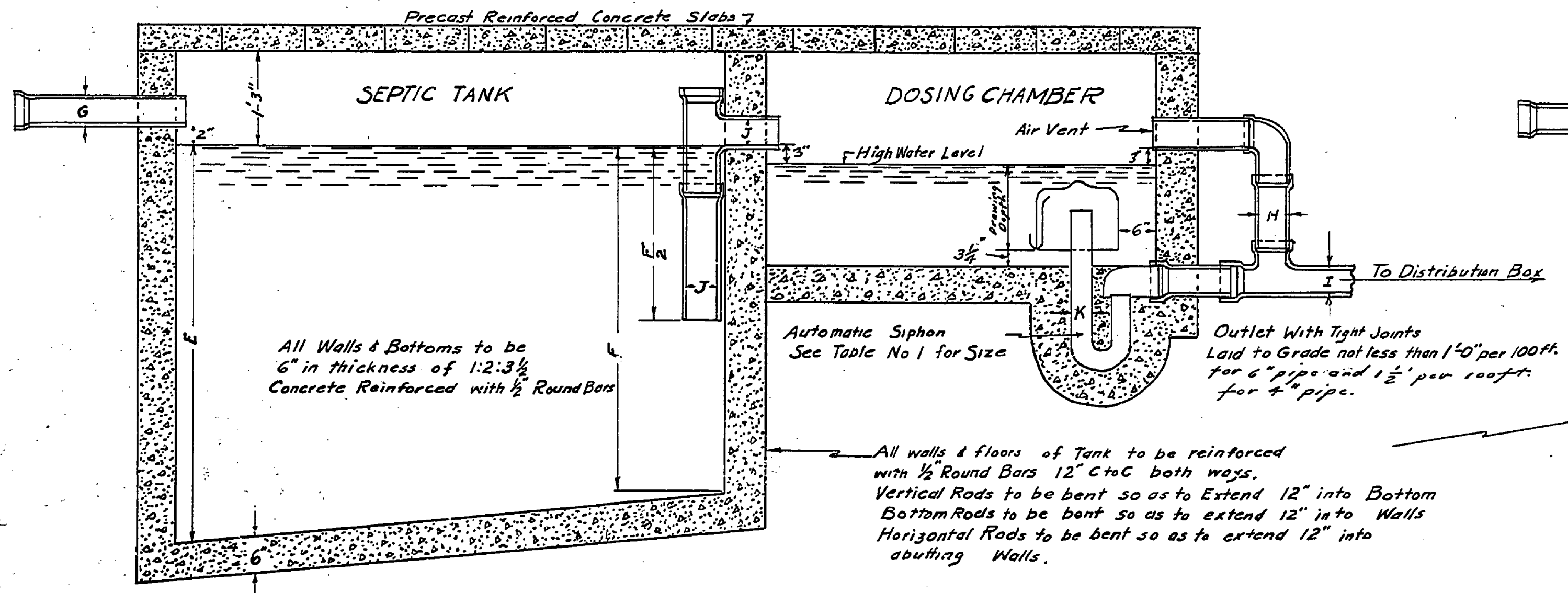
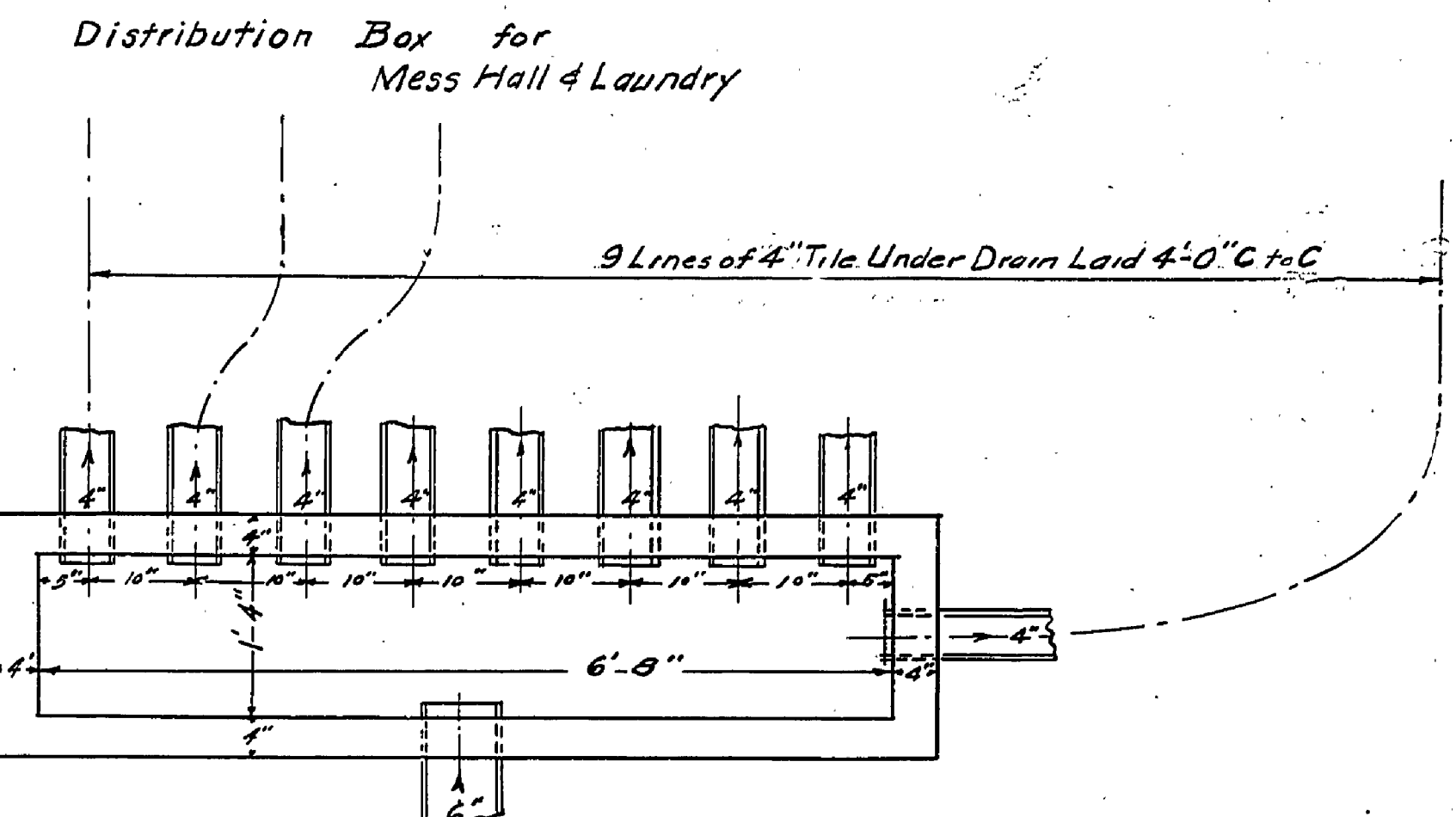
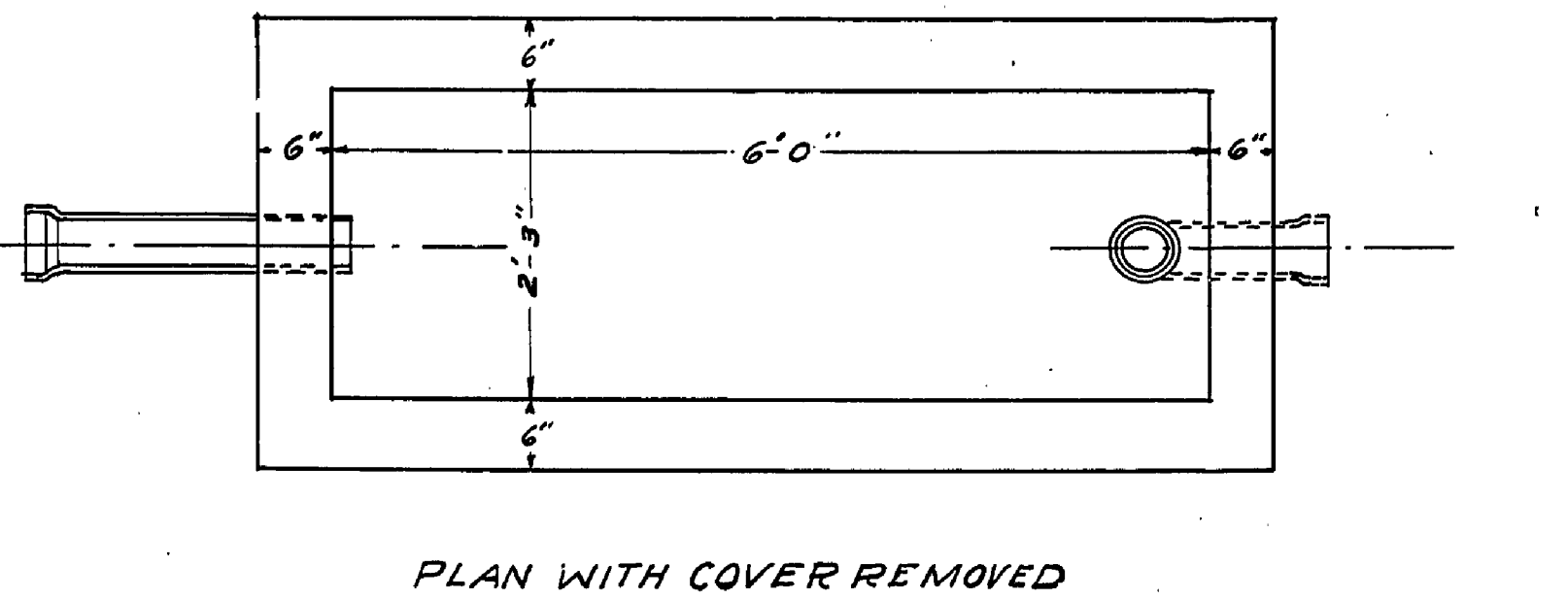


TYPICAL PLANS of SEPTIC TANK & DOSING CHAMBER

for CABIN GROUPS and for MESS HALL and LAUNDRY GROUP

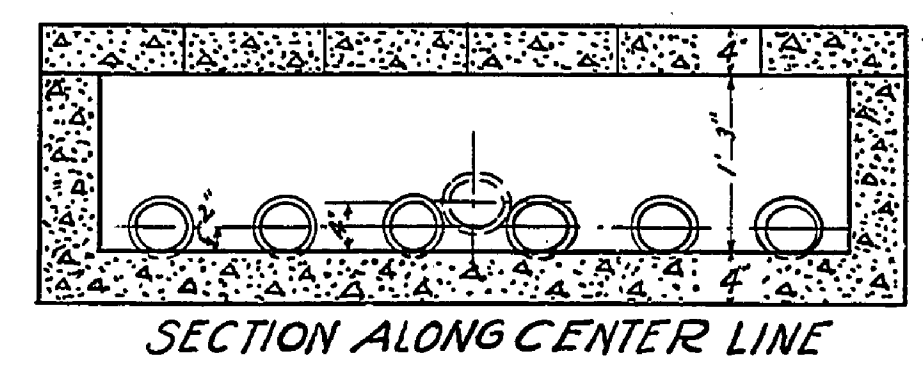
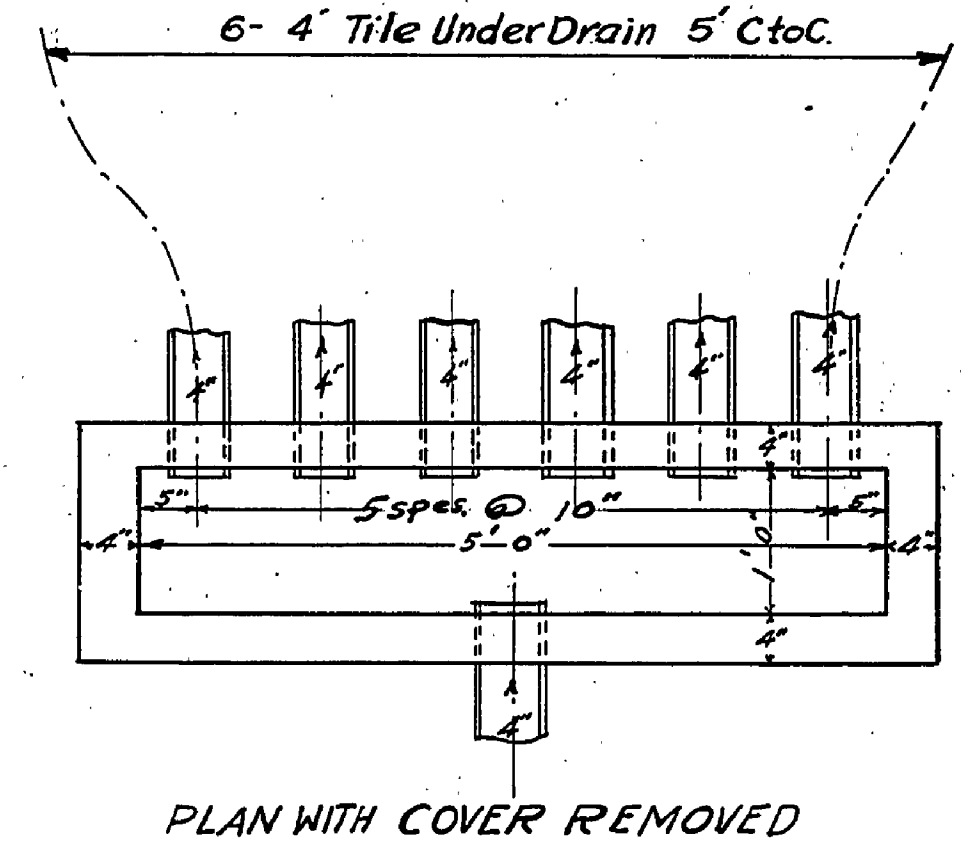


SEPTIC TANK for INFIRMARY



Estimate 0.68 Cuyd. 1:2:3 1/2 Concrete Not Reinforced Except Top Slabs. Top Slabs 8'-4" x 11'-2" Reinforced with 2-1/2" Round Bars 1'-8" Long Joints of Vitrified Tile Inlet to be Sealed with Cement Sand Mortar 4" Tile in Distribution Field to be Tile Underdrain or Form Tile Tile in Distribution Field to be laid Level.

DISTRIBUTION BOX FOR GROUPS 1 to 4



Estimate 0.44 cuyd. 1:2:3 1/2 Concrete Not Reinforced Top Slabs 6'-4" x 11'-2" 1'-8" Joints of Vitrified Tile Inlet to be sealed with Sand Cement Mortar 4" Tile in Distribution Field to be Tile Underdrain or Form Tile laid level.

Table No. 1

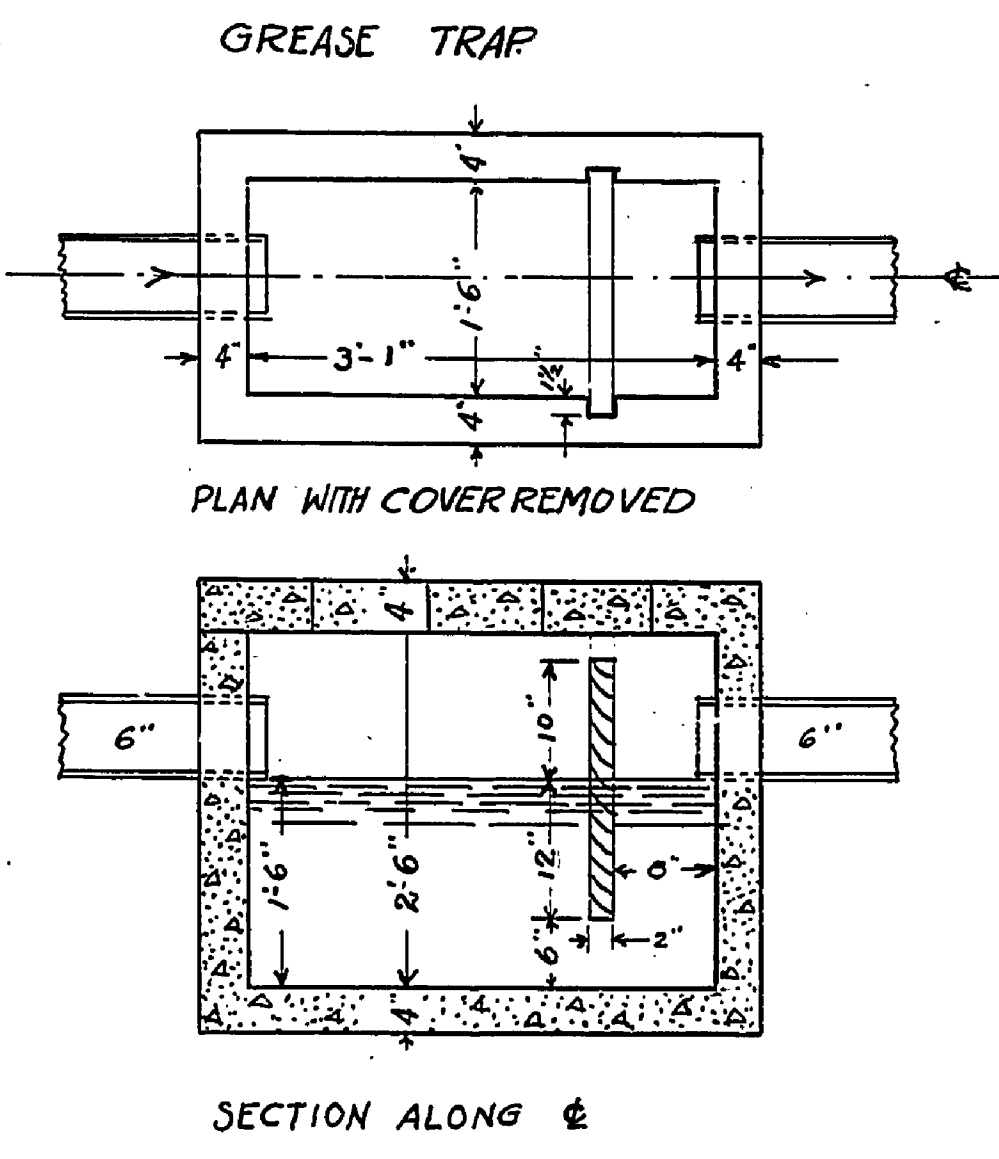
Capacity Gallons	Septic Tank				Dosing Chamber		Siphon		Cyl. Dia. of Chamber	Dia. of Siphon	Top Slab Dimensions	G	H	I	J		
	A	B	F	F	C	D	K	L									
Group 1 to 4 (Each)	600	7'-0"	2'-4"	5'-4"	4'-8"	9'-4"	2'-8"	5'-0"	3"	13"	4.6	509	13'-2 1/2" x 12'-4"	4"	4"	4"	4"
Mess Hall & Laundry	2500	14'-0"	4'-0"	6'-6"	5'-6"	44'-5"	4'-0"	10'-6"	4"	17"	11	1051	26'-5 1/2" x 8'-5"	6"	6"	6"	6"

Table No. 3
Bill of Reinforcing Steel - Infirmary Tank - 1/2" Round

Location	Notes	Length Each	Total Length
Longitudinal Bars in Bottom		4 8'-6"	34'-0"
Transverse Bars in Bottom		7 4'-9"	33'-3"
Horizontal Bars in 2 Ends		11 4'-9"	52'-3"
Vertical Bars in 1 End (Deep)		4 6'-2"	25'-4"
" " 1 End (Shallow)		4 5'-8"	22'-8"
Horizontal Bars in 2 Sides		12 8'-6"	102'-0"
Vertical Bars in 2 Sides		2 6'-3"	12'-6"
" " " " " "		2 6'-2"	12'-4"
" " " " " "		2 6'-1"	12'-2"
" " " " " "		2 6'-0"	12'-0"
" " " " " "		2 5'-11"	11'-10"
" " " " " "		2 5'-10"	11'-8"
" " " " " "		2 5'-9"	11'-6"
Bars in Top Slab		21 3'-0"	63'-0"
Totals.		77	416'-6"

Table No. 2
Bill of 1/2" Reinforcing Steel for Disposal Plants

Location of Bar	Group 1 to 4 - Each		Mess Hall & Laundry	
	No. Pcs.	Length Each	No. Pcs.	Length Each
Longitudinal Bar in Bottom of Septic Tank	4	9'-6"	5	16'-6"
Transverse " " " " " "	12	4'-10"	27	6'-6"
Longitudinal Bars in Bottom of Chamber	4	7'-6"	5	13'-0"
Vertical Bars in Deep End of Tank	4	7'-8"	5	8'-10"
Horizontal Bars in Deep End of Tank	8	4'-10"	8	6'-6"
Vertical Bars in Shallow End of Tank	4	7'-0"	5	7'-10"
Horizontal Bars in Shallow End of Tank	7	4'-10"	7	6'-6"
Vertical Bars in End of Chamber	4	4'-0"	5	4'-3"
Horizontal Bars in End of Chamber	4	4'-10"	4	6'-6"
Vertical Bars in 2 Sides of Chamber	10	4'-0"	22	4'-3"
Horizontal Bars in 2 Sides of Tank	8	7'-6"	8	13'-0"
Vertical Bars in 2 Sides of Tank	14	9'-6"	16	16'-6"
" " " " " "	2	7'-5"	2	8'-9"
" " " " " "	2	7'-7"	2	8'-8"
" " " " " "	2	7'-6"	2	8'-7"
" " " " " "	2	7'-5"	2	8'-6"
" " " " " "	2	7'-4"	2	8'-5"
" " " " " "	2	7'-3"	2	8'-4"
" " " " " "	2	7'-2"	2	8'-3"
" " " " " "	2	7'-0"	2	8'-2"
" " " " " "	2	7'-0"	2	8'-1"
" " " " " "	2	7'-0"	2	8'-0"
Bars in Top Slab	39	3'-0"	104	3'-5"
Total 1/2" Round Reinforcing Steel.	138	760'-4"	243	1577'-3"



GREASE TRAP
Estimate 0.53 cuyd. 1:2:3 1/2 Concrete Not Reinforced except Top Slab Top Slabs - 5'-4" x 9'-2" Reinforced with 2-1/2" Round Bars 1'-10" Long each Total length 1/2" Steel 18'-4" = 12 lbs.

Note:
All tile in the distribution fields to be laid in a bed of gravel 10" wide extending from a depth 4" below the bottom of the tile to an elevation flush with the top of the tile.
Tile to be laid with 1/4" maximum open joints, protected with tar paper over the upper half of the joints.

Approved by Michigan Dept. of Health.
Director Bureau of Engineering

Approved by Michigan Conservation Dept.
Superintendent of State Parks

DEPARTMENT OF THE INTERIOR
NATIONAL PARK SERVICE
COOPERATING WITH
RESELEMENT ADMINISTRATION
DIVISION OF LAND UTILIZATION
Region Two

LD-116 YANKEE SPRINGS
SEWAGE DISPOSAL PLANT DETAILS

Date Drawn 4-10-36 Date Submitted 4/13/36
Drawn By S.P.N. Traced By S.P.N. Checked By R.S.R.
Submitted By _____ Date _____

Project Manager _____ Date _____ SHEET NO _____
Approved By _____ Date _____
Regional Director _____ FILE NO _____