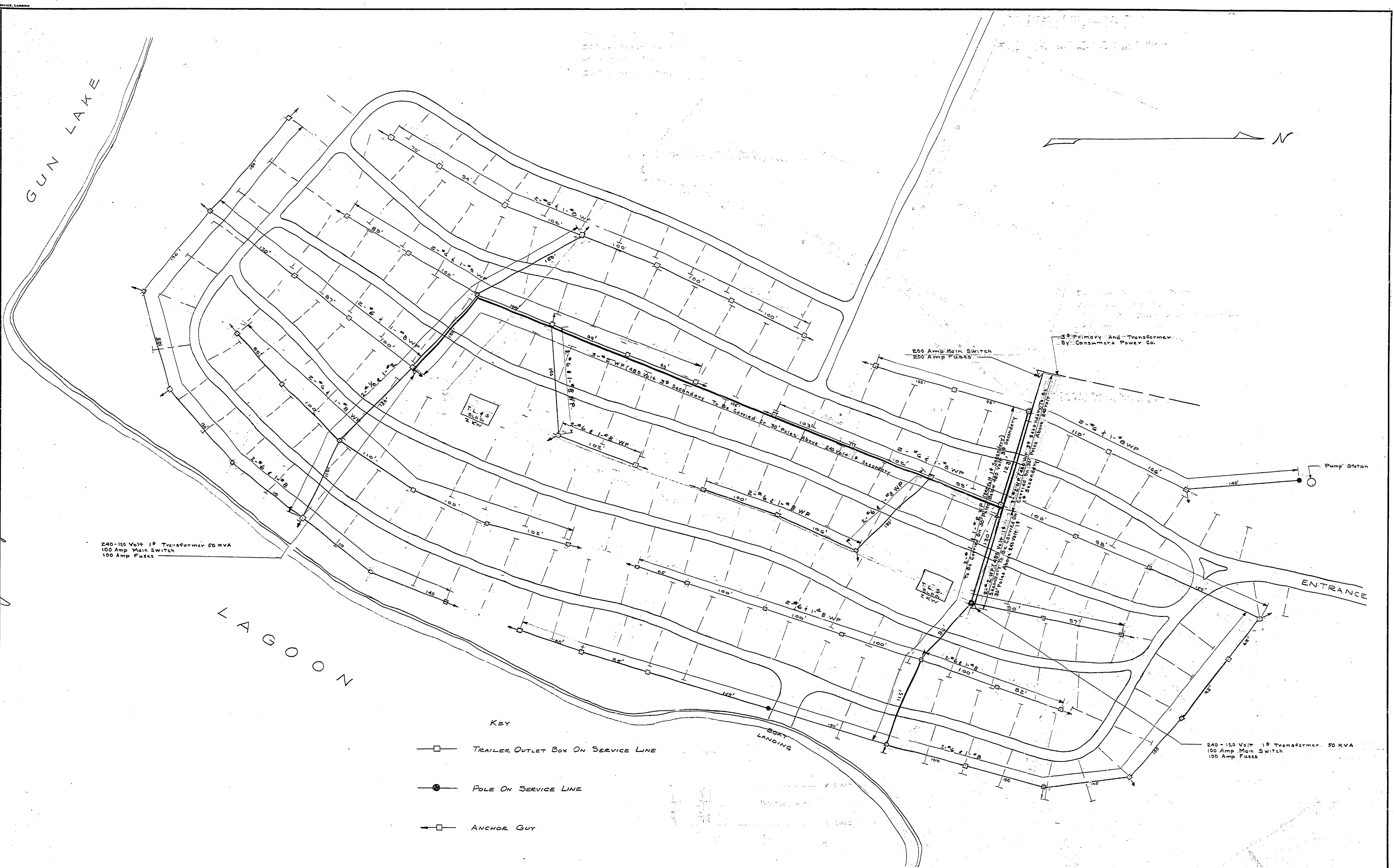


DESIGNED BY	DATE	REVIEWED	DATE	APPROVED	NO.	DATE	BY	REVISIONS	DATE	BY
B.H.G.	11/15/62	ARCHITECTURAL	11/15/62	[Signature]	1	11/15/62	B.H.G.	Run Power To Pump Station		
J. YMA	10-3-61	ENGINEERING	8-1-62	[Signature]	2	5/1-61	P.A.K.	To Conform To New Campground Extern.		
B.H.G.	11/15/62	LANDSCAPE	8-1-62	[Signature]	3	10/15/62	B.H.G.	Redesignated Par. 30 Amp Outlet Fuses		
					4					
					5					
					6					



KEY

- TRAILER OUTLET BOX ON SERVICE LINE
- POLE ON SERVICE LINE
- ANCHOR GUY