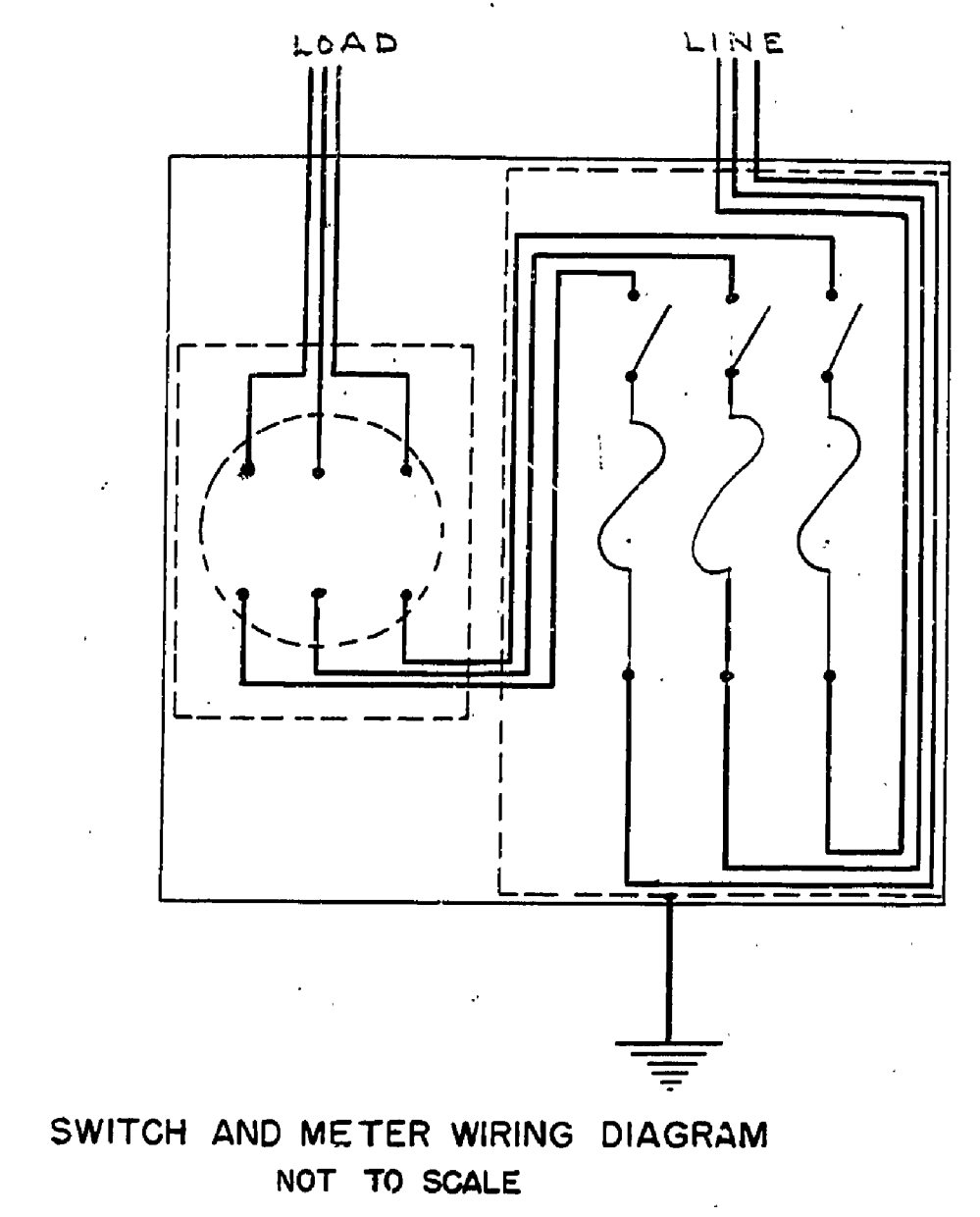
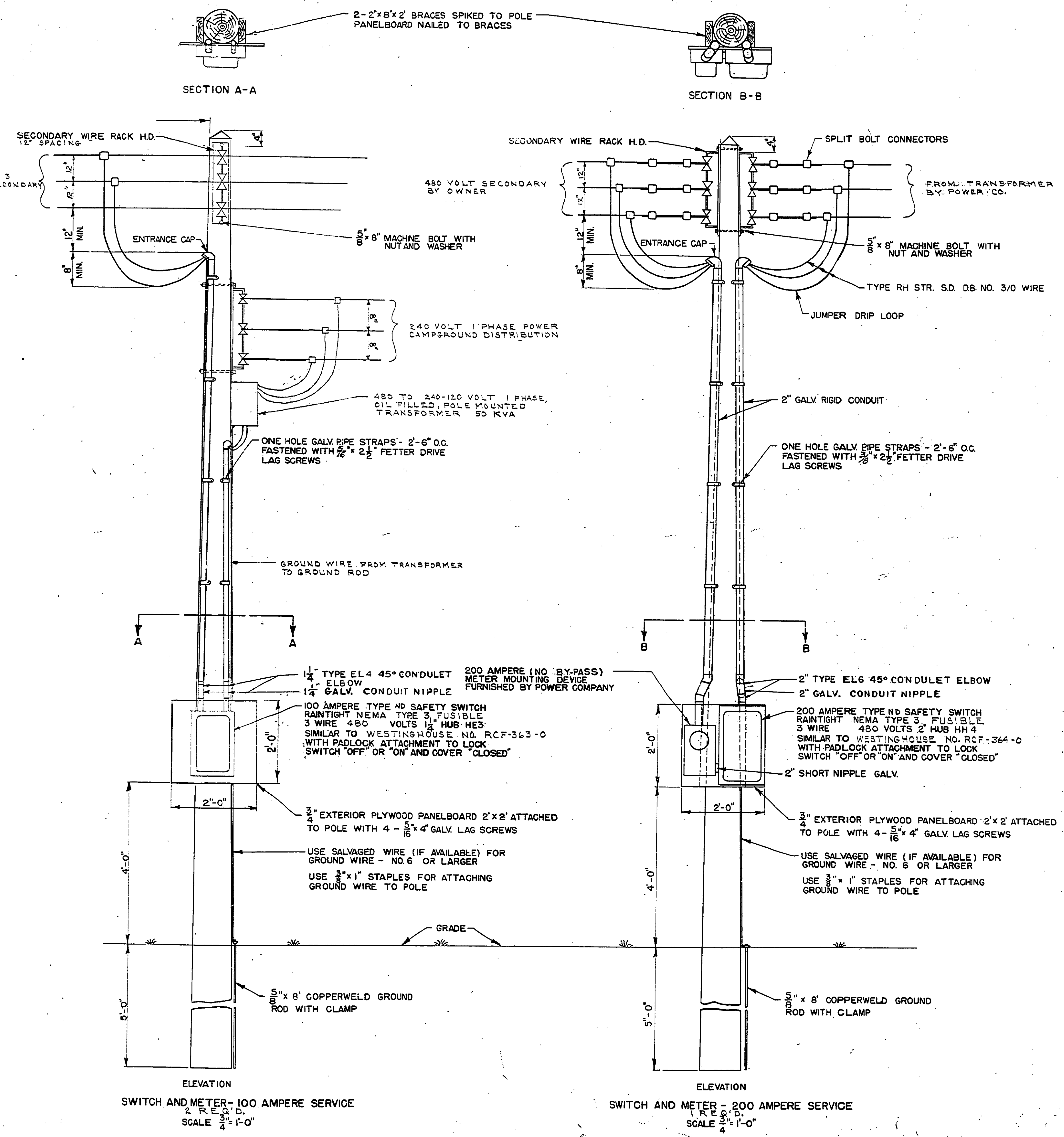


DRAWN BY R. C. BENNETT	TRACED BY	REVIEWED BY SECTIONS		DATE	APPROVED BY	NO.	DATE	BY	REVISIONS
		ARCHITECTURAL	D.A.M.C.						
CHECKED BY PAH.	DATE SEPT. 9, 1956	ENGINEERING	S.P.P.	3-5-62	ASSISTANT CHIEF IN CHARGE <i>[Signature]</i>	2	10-16-62	B.H.G.	4
		LANDSCAPE	S.H.G.	3-5-62		3	10-16-62	B.H.G.	5
APPROVED		CHIEF, PLANNING & CONSTRUCTION		3-6-62	CHANGED TO SHOW SWITCH ALIGNED OFF POLE		6		



ENTRANCE SWITCH AMPERE RATING	MATERIAL SCHEDULE	
	100 AMPERE	200 AMPERE
ITEM	QUANTITY - SIZE	QUANTITY - SIZE
GALV. RIGID CONDUIT	20' OF 1 1/2"	20' OF 2"
GALV. RIGID CONDUIT SHORT NIPPLE	2- 1 1/2"	2- 2"
GALV. TYPE EL CONDUIT	4- 1 1/2"	4- 2"
GALV. RIGID CONDUIT COURLING		
GALV. RIGID CONDUIT BUSHING	3- 1 1/2"	3- 2"
GALV. RIGID CONDUIT LOCKNUT	2- 1 1/2"	2- 2"
GALV. RIGID CONDUIT ENTRANCE CAP	2- 1 1/2"	2- 2"
GALV. RIGID CONDUIT MALL IRON 1 HOLE STRAP	10- 1 1/2"	10- 2"
FETTER DRIVE SCREW	12- 3/8" x 2 1/2"	12- 3/8" x 2 1/2"
TYPE RH STRANDED-SD-DB COPPER WIRE	100'- NO. 2	100'- NO. 3/0
TYPE RH STRANDED-SD-DB COPPER WIRE	50'- NO. 4	50'- NO. 1/0
3 SPOOL GALV. SEC. WIRE RACK WITH INSULATORS	2- 8" SPACE FOR NO. 2-6" SPACE FOR NO. 4, NO. 6, NO. 8	2- 8" SPACE FOR NO. 2-8" LARGER-8" SPACE FOR NO. 4, NO. 6, NO. 8
GALV. MACHINE BOLT WITH NUT & WASHER	2- 5/8" x 8"	2- 5/8" x 8"
SPLIT BOLT CONNECTOR	4- NO. 2 STR. & 2- NO. 4 STR.	4- NO. 3/0 STR. & 2- NO. 1/0 STR.
COPPERWELD GROUND ROD WITH CLAMP	1- 5/8" x 8'-0"	1- 5/8" x 8'-0"
GROUND WIRE (SALVAGED)	6'- NO. 6 STR.	6'- NO. 6 STR.
GALV. STAPLE TO FASTEN GROUND WIRE TO POLE	6- 3/8" x 1"	6- 3/8" x 1"
SERVICE ENTRANCE SWITCH	100 AMPERE TYPE S. STD. DUTY SAFETY SWITCH WITH 3 WIRE S.N. (2-BLADE-2 FUSED) 240 VOLT AC RAINIGHT NEMA TYPE 3 SIMILAR TO SQ. D CAT. NO. A47313 RO WITH 1 1/2" HUB CAT. NO. HH 3 AND WITH PADLOCK ATTACHMENT TO LOCK SWITCH "OFF" OR "ON" AND COVER "CLOSED"	200 AMPERE TYPE S. STD. DUTY SAFETY SWITCH WITH 3 WIRE S.N. (2-BLADE-2 FUSED) 240 VOLT AC RAINIGHT NEMA TYPE 3 SIMILAR TO SQ. D CAT. NO. A47314 RO WITH 2" HUB CAT. NO. HH 4 AND WITH PADLOCK ATTACHMENT TO LOCK SWITCH "OFF" OR "ON" AND COVER "CLOSED"
PANEL BOARD	1 PCS. 3/4" EXTERIOR PLYWOOD 2'x2'	1 PCS. 3/4" EXTERIOR PLYWOOD 2'x2'
HARDWARE	2 PCS. 2 1/8" x 2" BRACES - WP, CEDAR, OR FIR	2 PCS. 2 1/8" x 2" BRACES - WP, CEDAR, OR FIR
POLE (CEDAR)	1- 25' LONG (MIN. TOP 5" DIA.)	1- 25' LONG (MIN. TOP 5" DIA.)