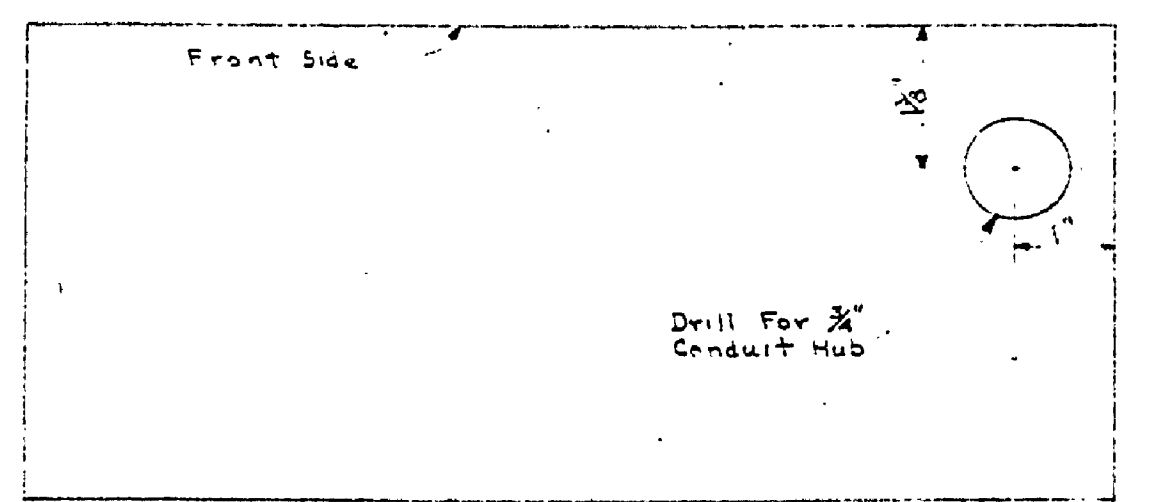
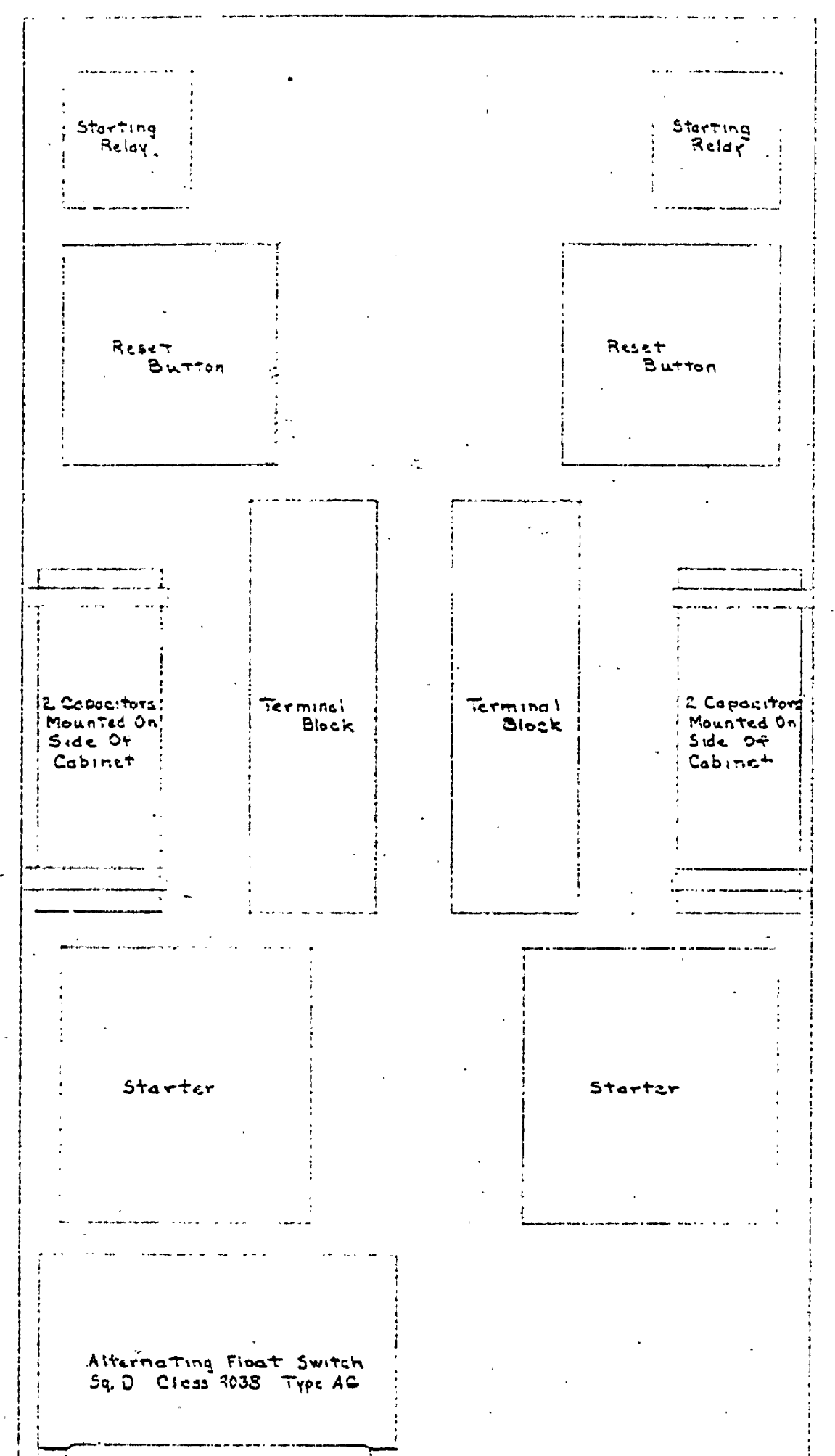
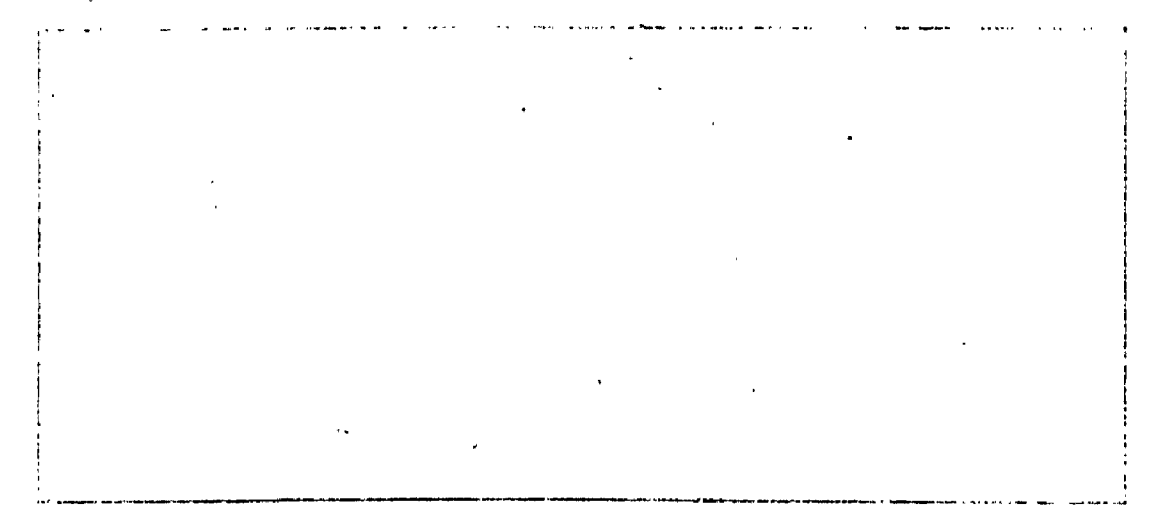
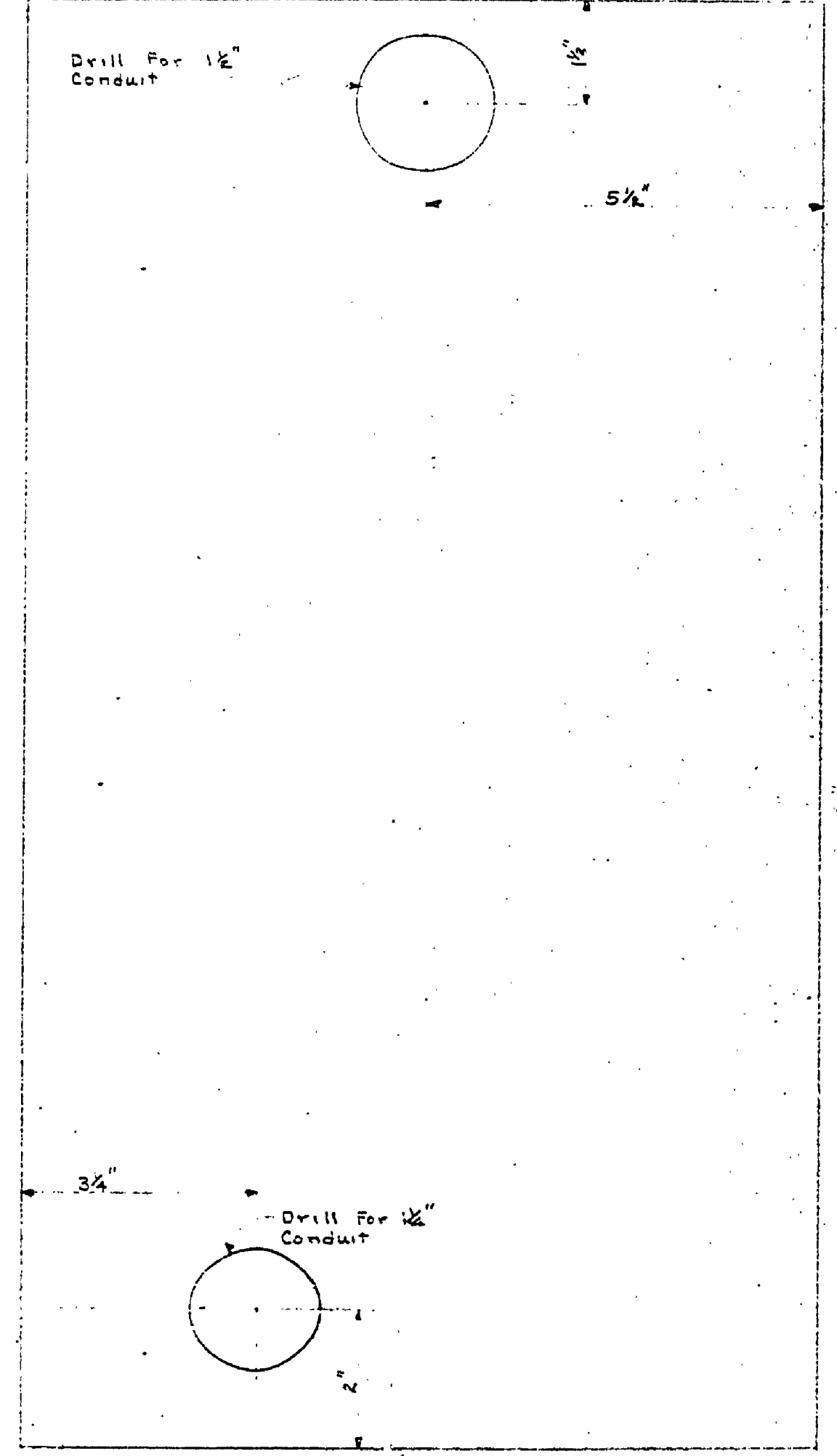


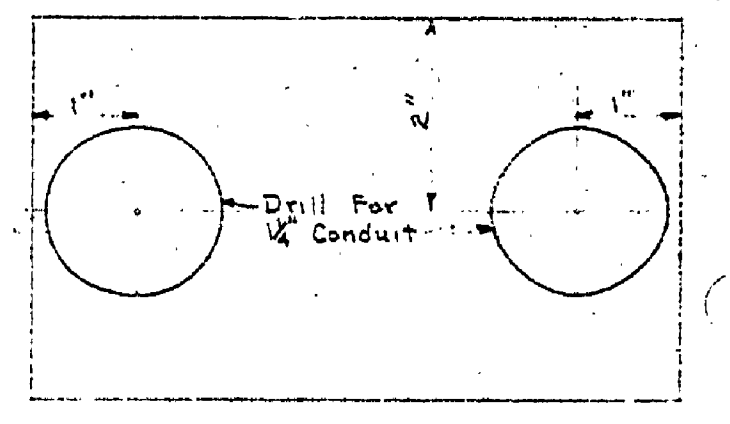
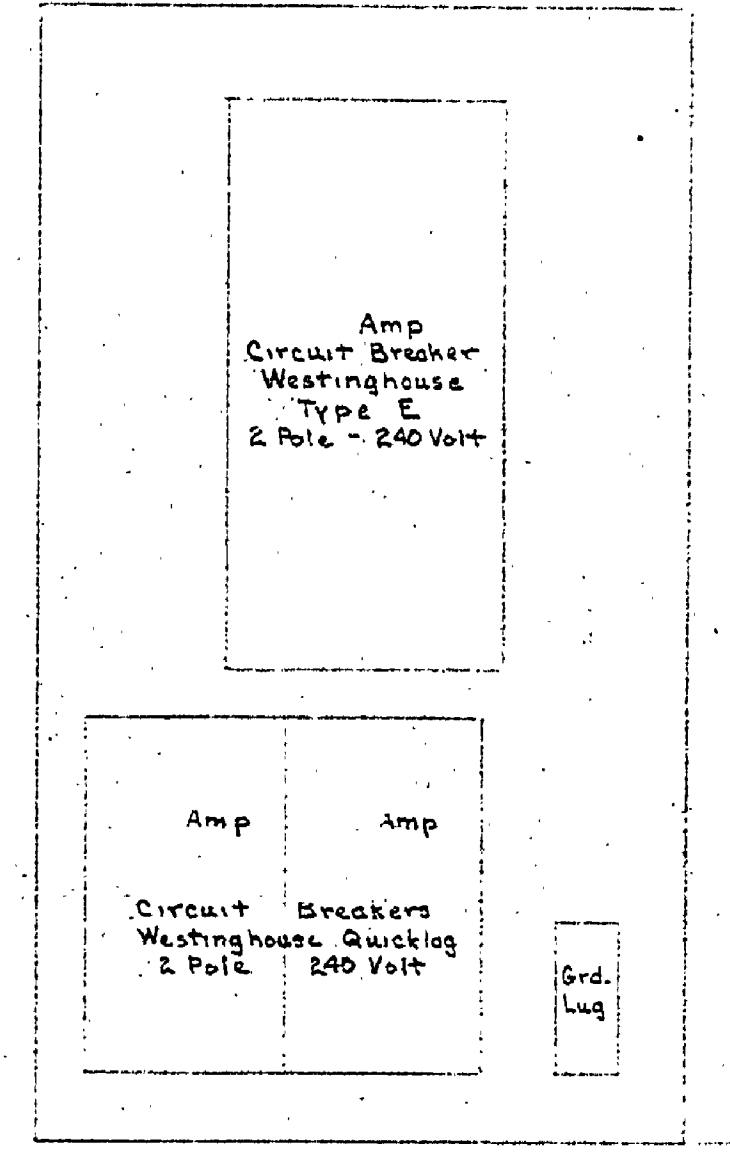
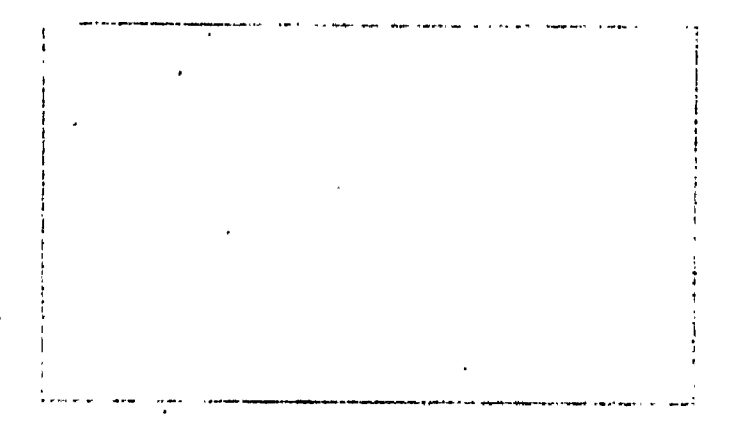
REVISIONS		NO. DATE BY		APPROVED BY		DATE		REVIEWED BY SECTIONS	
4		1		<i>[Signature]</i>	3-29-60	J.J.R.	ARCHITECTURAL	DRAWN BY	S. H. G.
5		2		<i>[Signature]</i>	3-29-60	J.J.R.	ENGINEERING	TRACED BY	F. J. P.
6		3		<i>[Signature]</i>	3-29-60	J.J.R.	LANDSCAPE	CHECKED BY	F. J. P.
								DATE	12. Metal. 1960



CONTROL FOR DUAL PUMPS
Half Scale

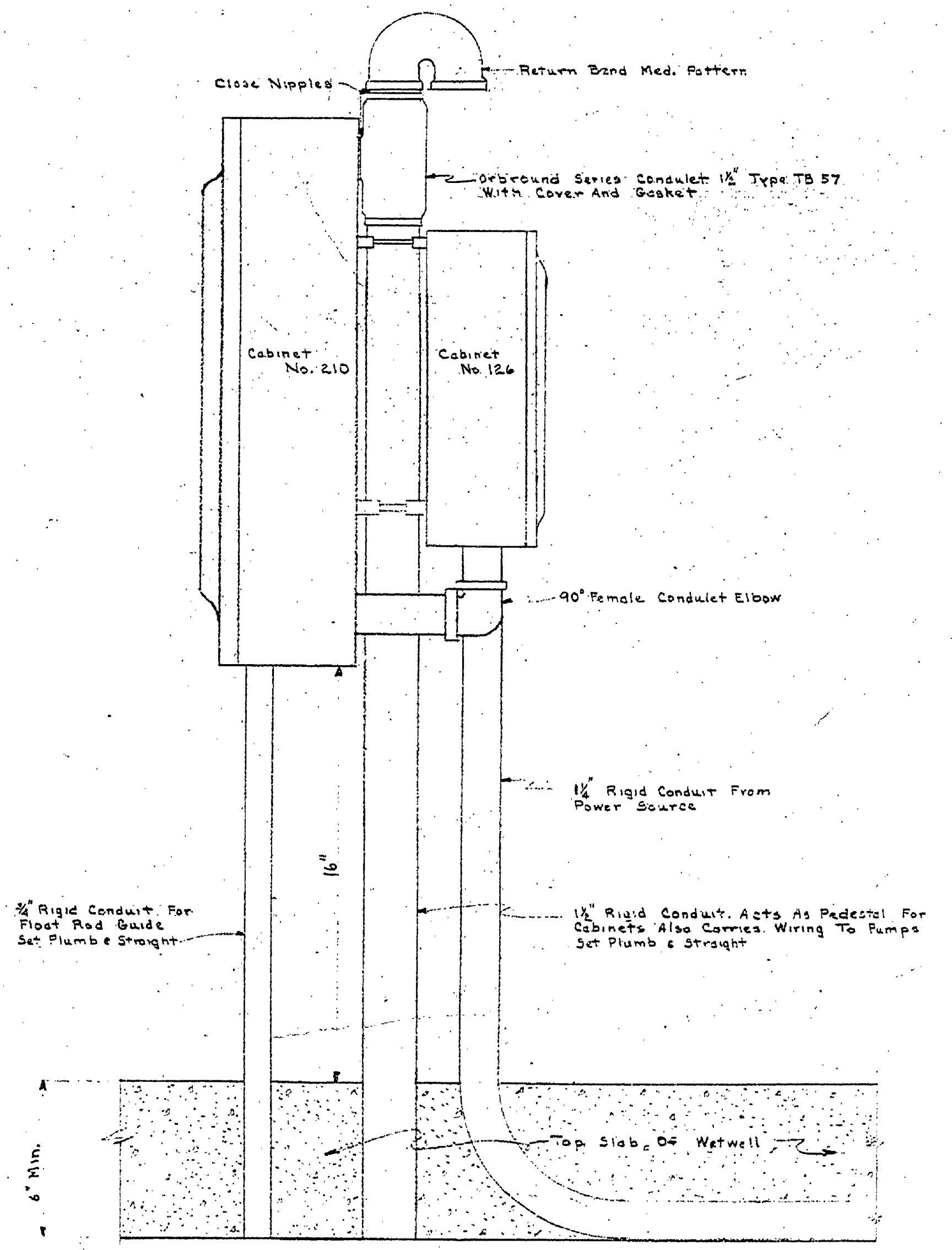
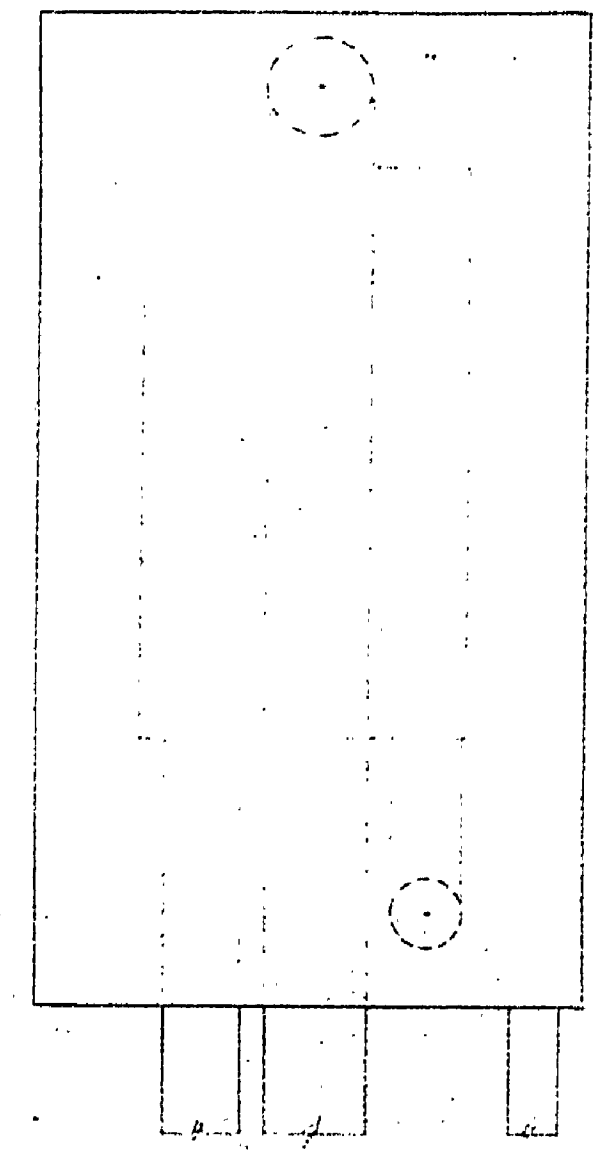


NOTES:
The Box Shown Is From Midwest Electric Products Inc. Weatherproof Cabinet No. 210 Cabinet Is Shown Here With Cover Removed. Pumps Will Have N.P. Motors



MAIN DISCONNECT
Half Scale

NOTES:
This Box Is From Midwest Electric Products Inc. Weatherproof Cabinet No. 124 Do Not Pour Top Slab Of Wet Well Until After Switch & Pump Control Pedestal Is Assembled And Set In Position In Form For Top Slab. The 1 1/2 Pedestal & 3/4 Float Rod Guide May Extend Beyond Bottom Of Top Slab.



SIDE ELEVATION
SWITCH AND PUMP CONTROL PEDESTAL
Scale 3/4" = 1'-0"