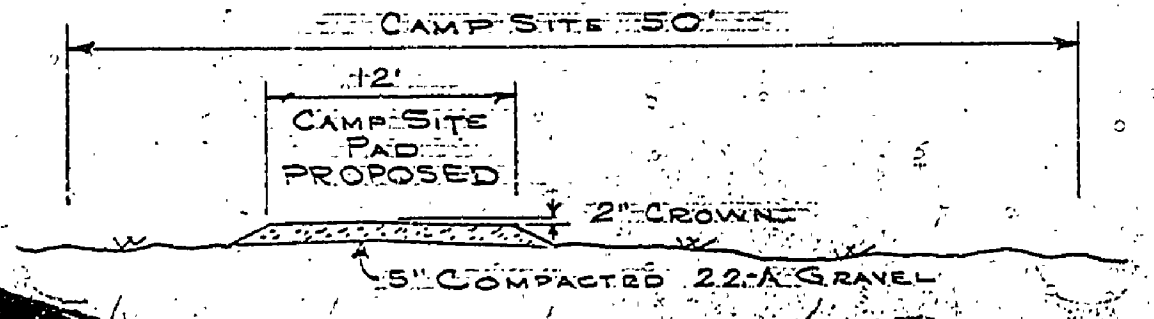
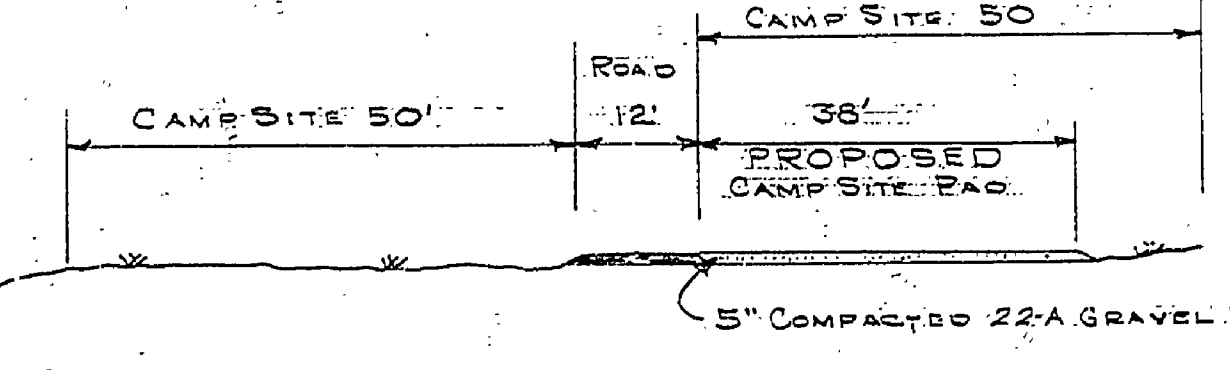
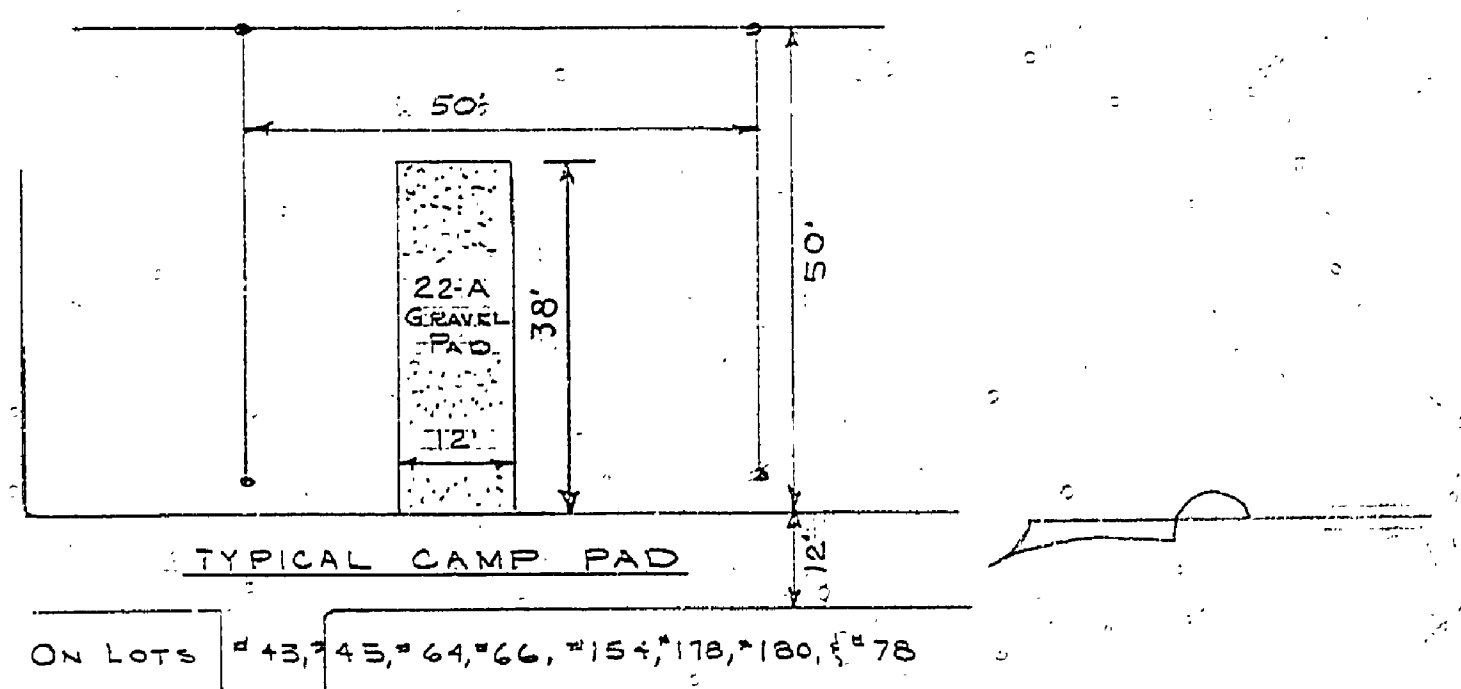
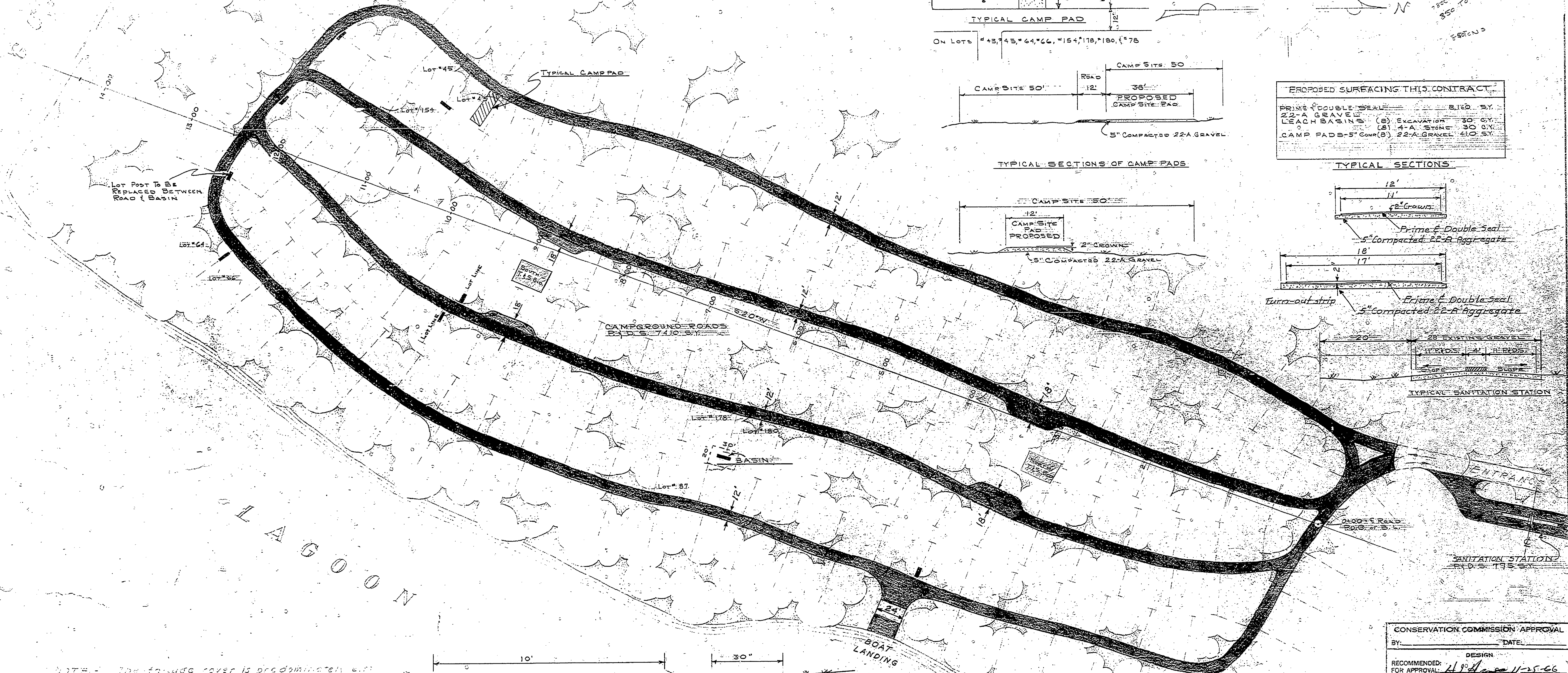
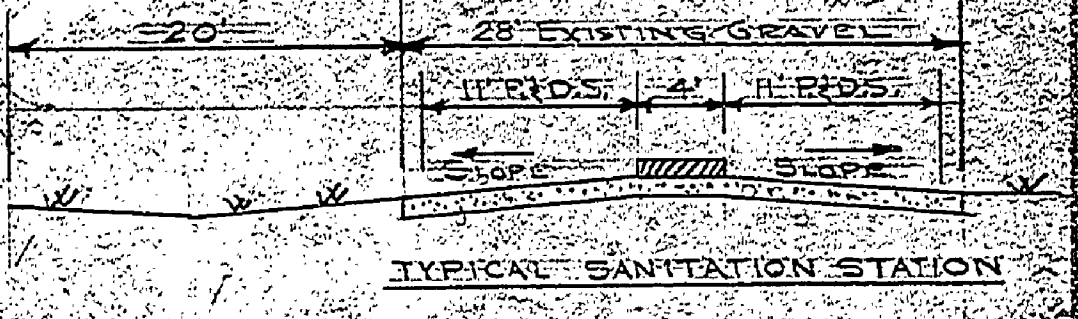
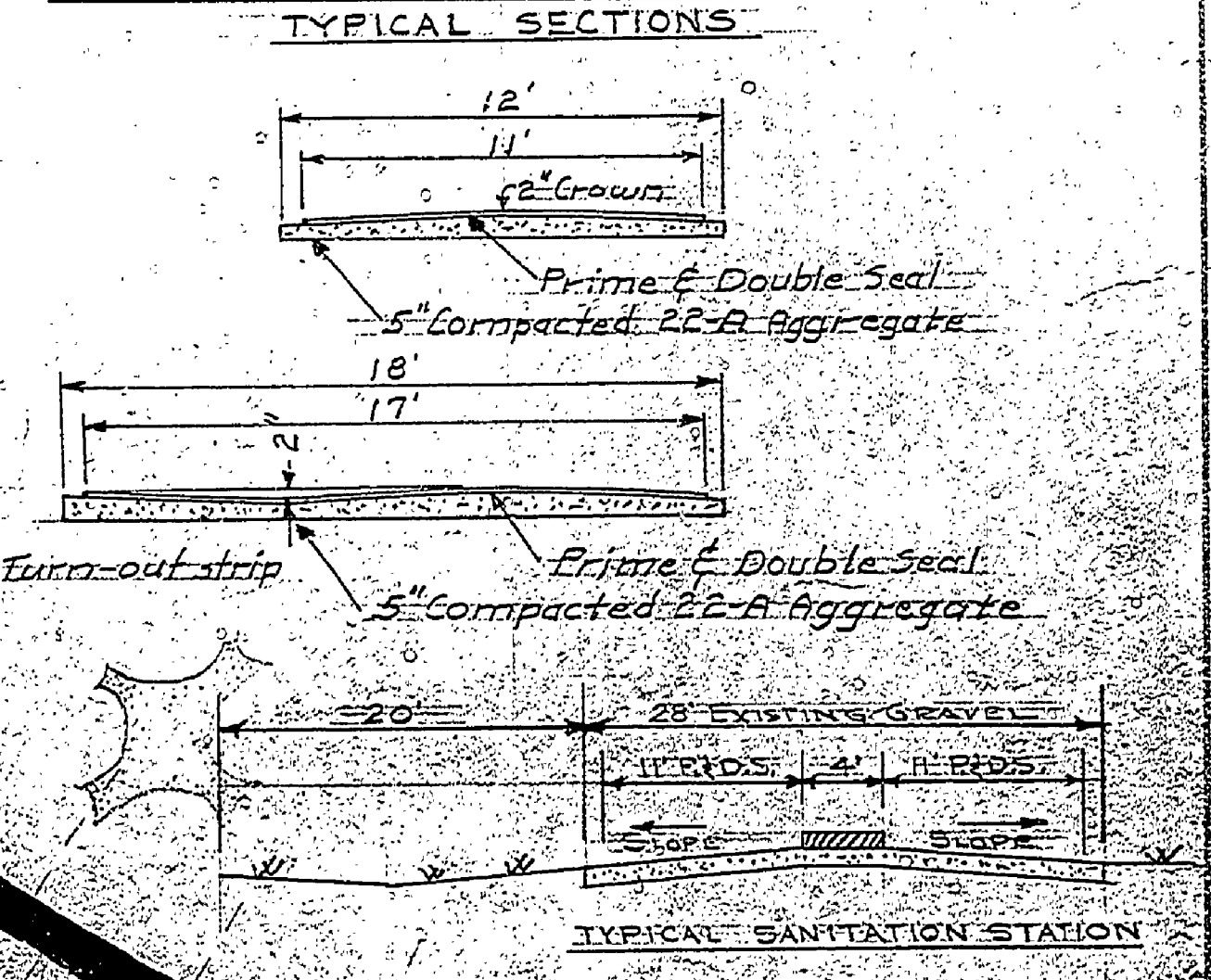


NO.	DATE	BY	REVISIONS
1			4
2			5
3			6

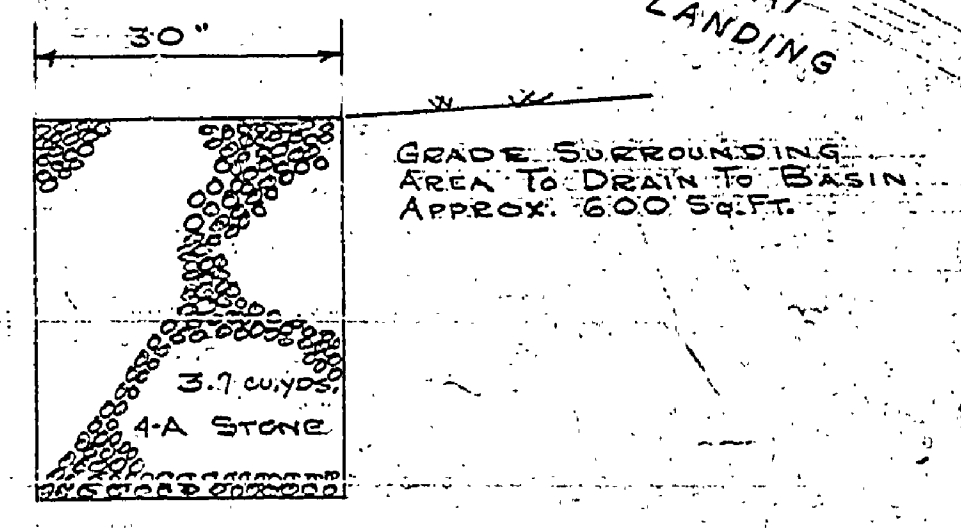
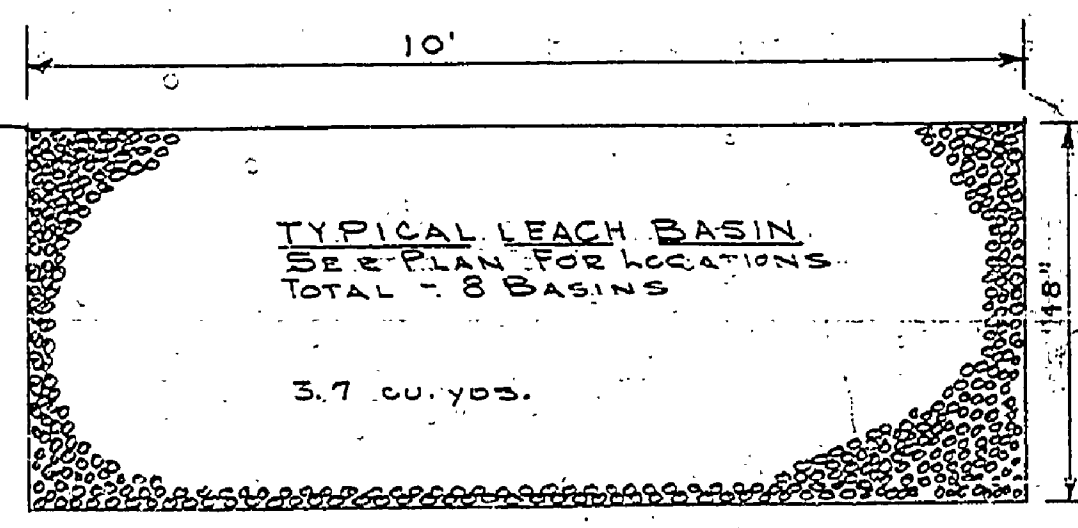
BASELINE WITNESSES
 S-T-A. 3-19.2 - 26.3' W of SW Cor. of the No. Toilet Bldg. on line with the South Wall.
 S-T-A. 8-74.6 - 24.4' W of NW Cor. of the No. Toilet Bldg. on line with the North Wall.



PROPOSED SURFACING THIS CONTRACT	
PRIME DOUBLE SEAL	8.160 SQ. YD.
22-A GRAVEL	(B) EXCAVATION 30 C.Y.
LEACH BASINS	(B) 4-A STONE 30 C.Y.
CAMP PADS-5' COMP	(B) 22-A GRAVEL 410 SQ. YD.



NOTE - The forage cover is predominately aspen and maple with a scattering of pine, poplar, and small dogwood.
 The planned parking area will contain 200 camps. The entrance or driveway road is 20 feet wide. The driveway roads are 12 feet wide. There are 515 3' x 12' for 100 25.



CONSERVATION COMMISSION APPROVAL	
BY: _____	DATE: _____
RECOMMENDED FOR APPROVAL: <u>H. J. ...</u>	DATE: <u>11-25-66</u>
RECOMMENDED FOR APPROVAL: <u>E. J. ...</u>	DATE: <u>1-8-67</u>
DIVISION APPROVAL	
BY: _____	DATE: _____
MICHIGAN DEPARTMENT OF CONSERVATION	
APPROVED: _____	DATE: _____
PLAN NO. _____	PROJECT NUMBER _____
SHEET NO. _____	SHEET OF _____

SCALE - 1" = 50'

MICHIGAN DEPARTMENT OF CONSERVATION ENGINEERING DIVISION

YANKEE SPRINGS RECREATION AREA GUN LAKE DAY USE SECTION BITUMINOUS SURFACING PLAN PLAN NO. E-143