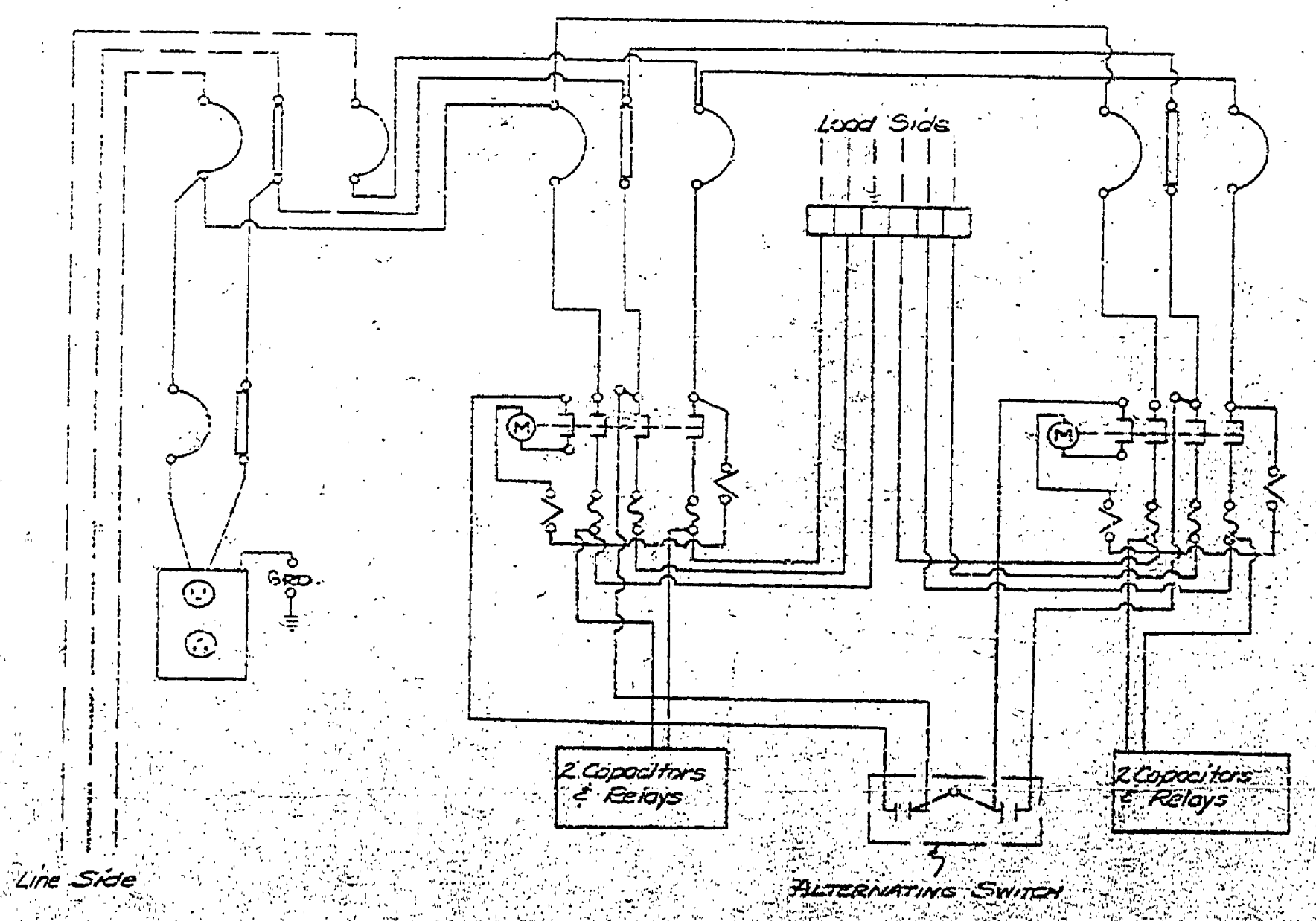
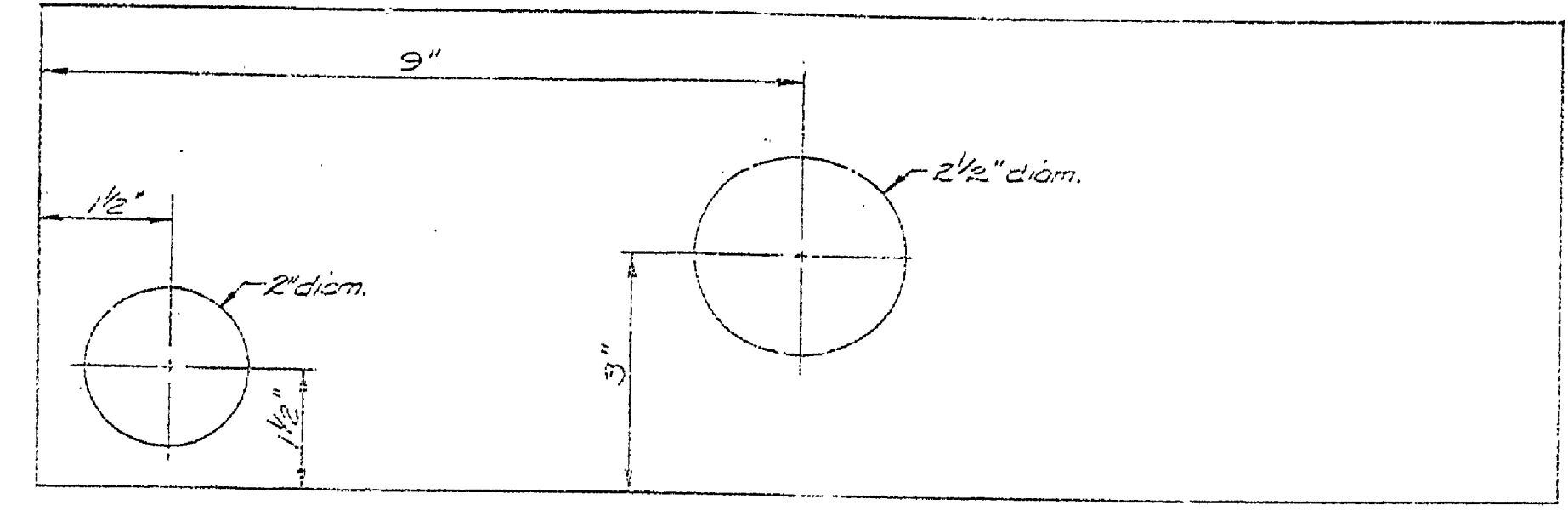


CONTROL CABINET - INSTALL IN BEACH HOUSE (WITH COVER REMOVED)



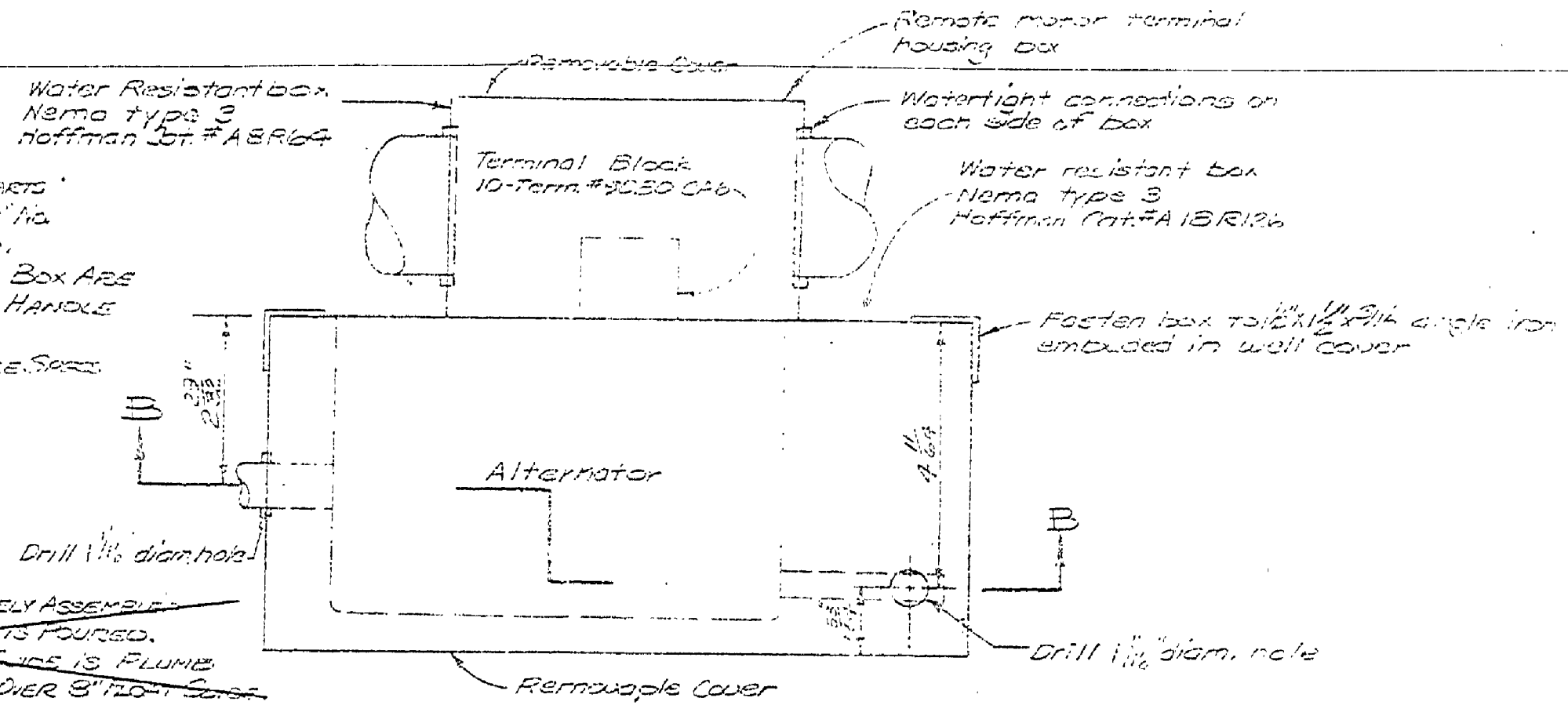
WIRING DIAGRAM (NOT TO SCALE) SINGLE PHASE ONLY



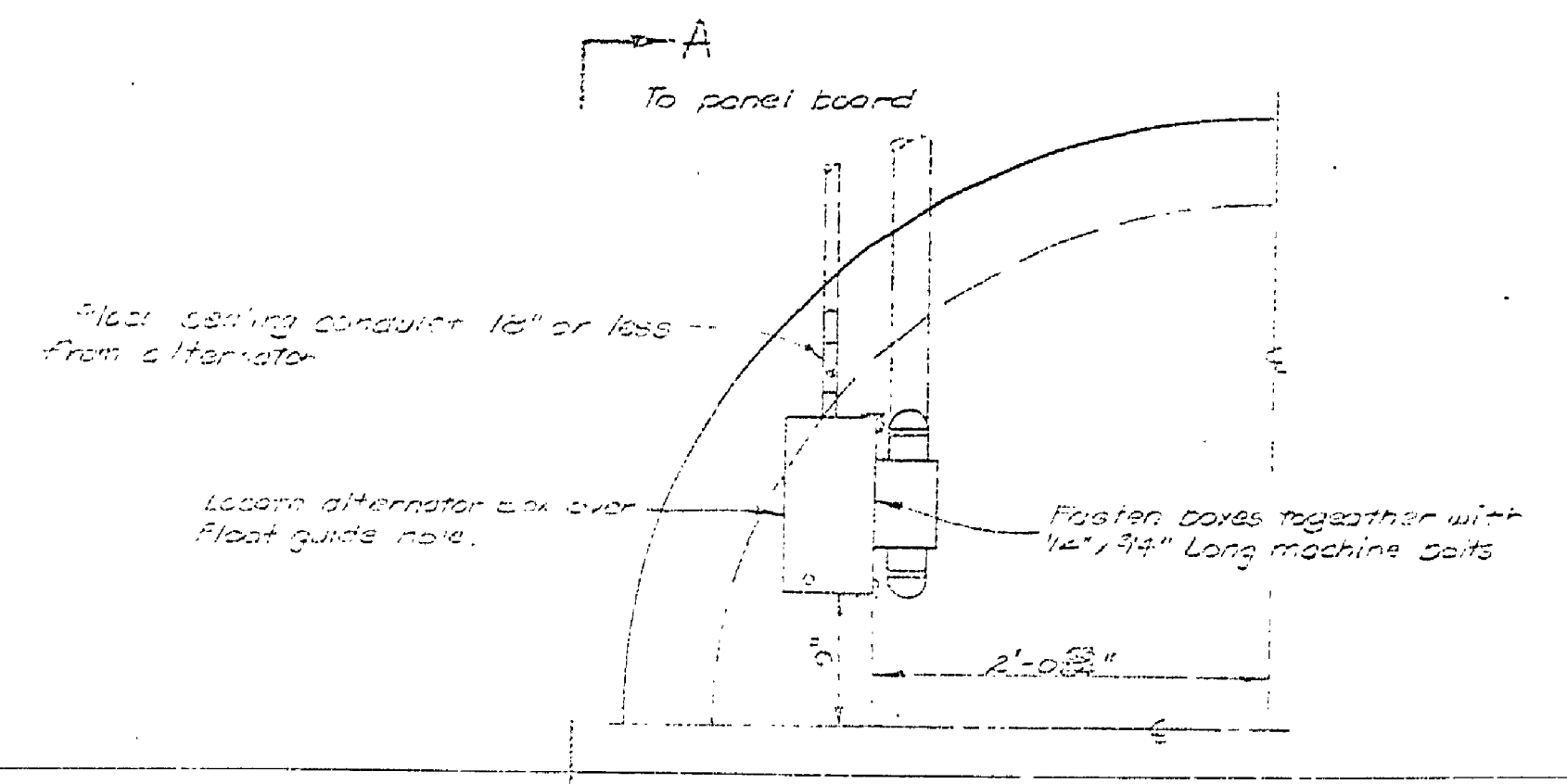
BOTTOM OF CONTROL CABINET (1/16 SCALE)

NOTES
ALL NUMBERS SHOWN ON COMPONENT PARTS IN CONTROL CABINET ARE SQUARE "D" NO. SUBSTITUTES WILL NOT BE ACCEPTED. COMPONENT PARTS IN THIS CONTROL BOX ARE TO BE ON SURVIVANT APPROXIMATE TO HANDLE PUMP MOTORS. FINISHED. CABINET IS TO BE WEATHERPROOF (SEE SPEC. FOR COMPLETE DESCRIPTION).

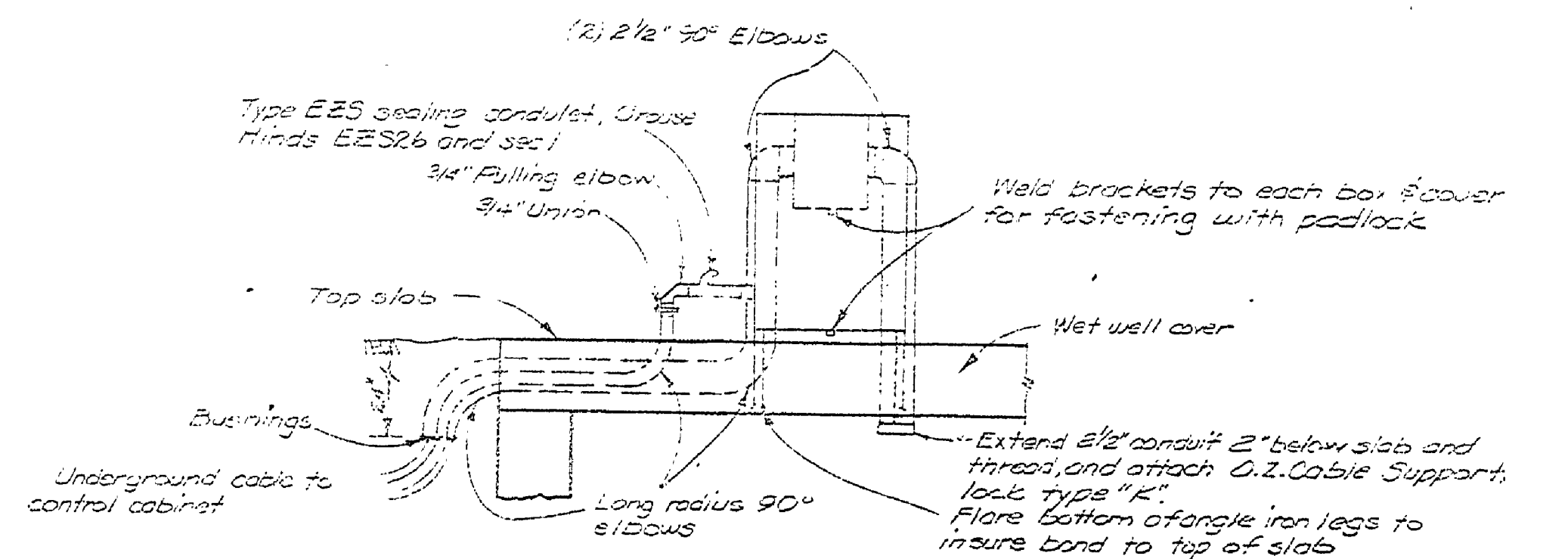
NOTES
CONTROL CABINET SHOULD BE COMPLETELY ASSEMBLED AND SET IN FORM BEFORE TOP IS TO BE FLOURED. BE SURE 3/4" CLEARANCE FOR FLOAT ROD SLIDE IS MAINTAINED AND EXACTLY CENTERED OVER 3" HOLES.



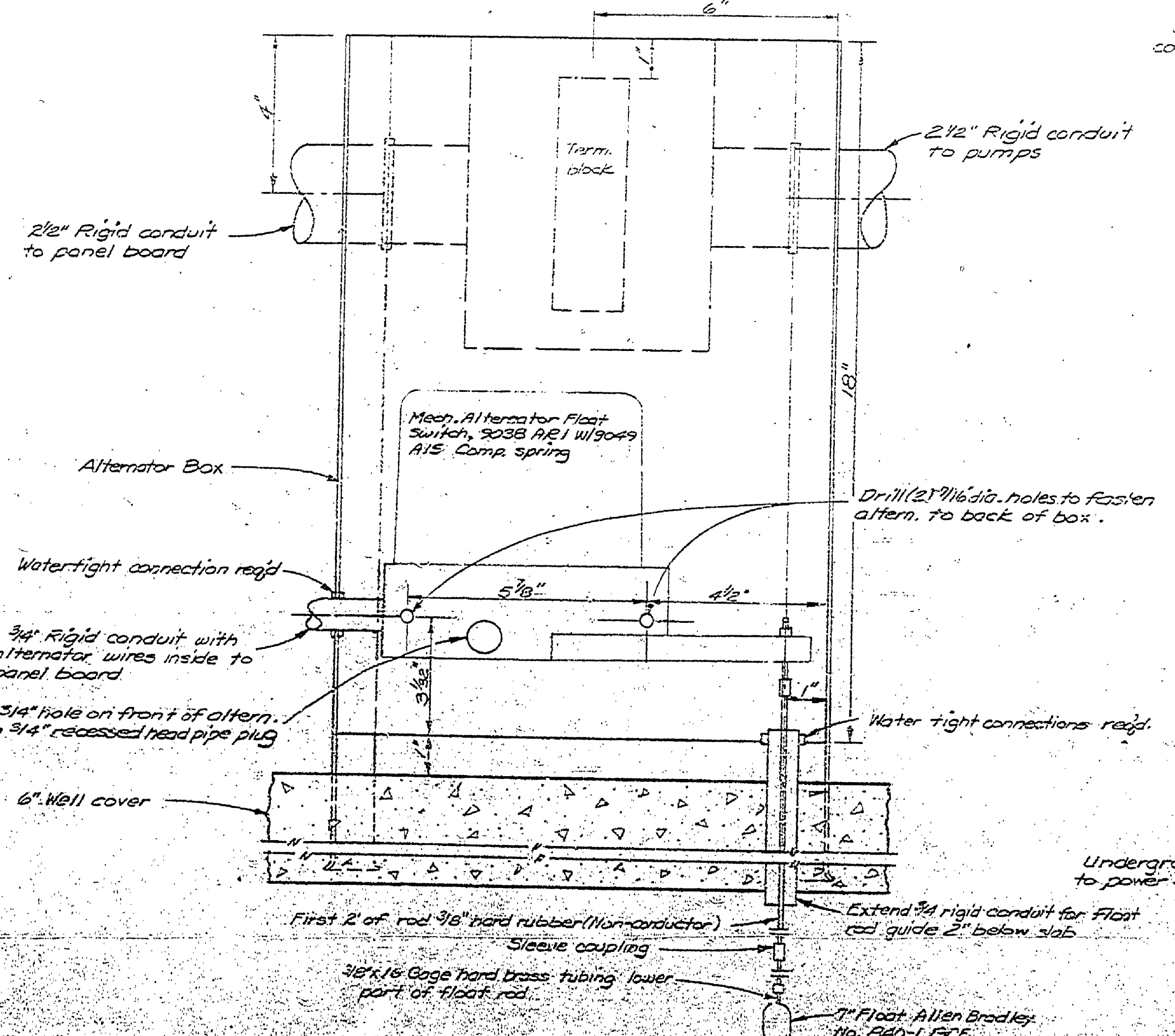
TOP (3/8" = 1")



ALTERNATOR & REMOTE MOTOR TERMINAL HOUSING BOX

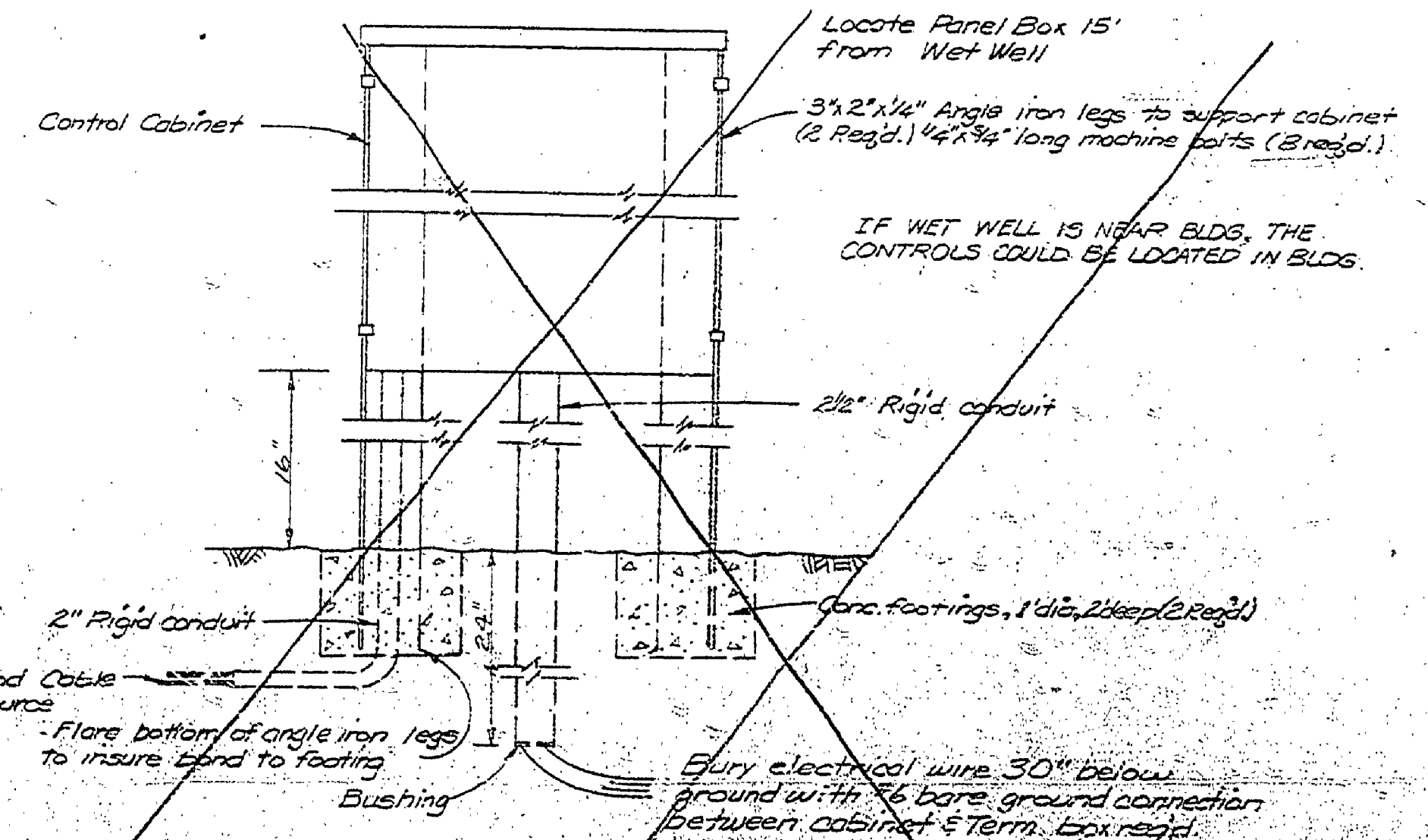


SECTION A-A



ALTERNATOR & REMOTE MOTOR TERMINAL HOUSING BOX SECTION B-B (1/16" = 1")

ALL ELECTRICAL CONNECTION AND MATERIAL TO CONFORM TO THE NATIONAL ELECTRICAL CODE.



CONTROL CABINET PEDESTAL INSTALLATION DETAILS

ALL BOXES & EQUIP. GROUNDED TO MEET ELECTRICAL CODE

LEGEND
Factory Wired
Wired on Job

SURVEYED BY	DRAWN BY C.E. MASSEY	DATE 9/69	NO.	DATE	BY	REVISIONS	NO.	DATE	BY	REVISIONS	MICHIGAN DEPARTMENT OF NATURAL RESOURCES	220 VOLT 1 PHASE PUMP CONTROL PANEL	YANKEE SPRINGS REC. AREA	PROJECT NO. 24-12(1)
DESIGNED BY	CHECKED BY	DATE	1	5/69	JMK	Explosion Proofing Revision	2						BEACH HOUSE UTILITIES	SHEET 6 OF 6
														PLAN NO. E-117

RE MICROFILM