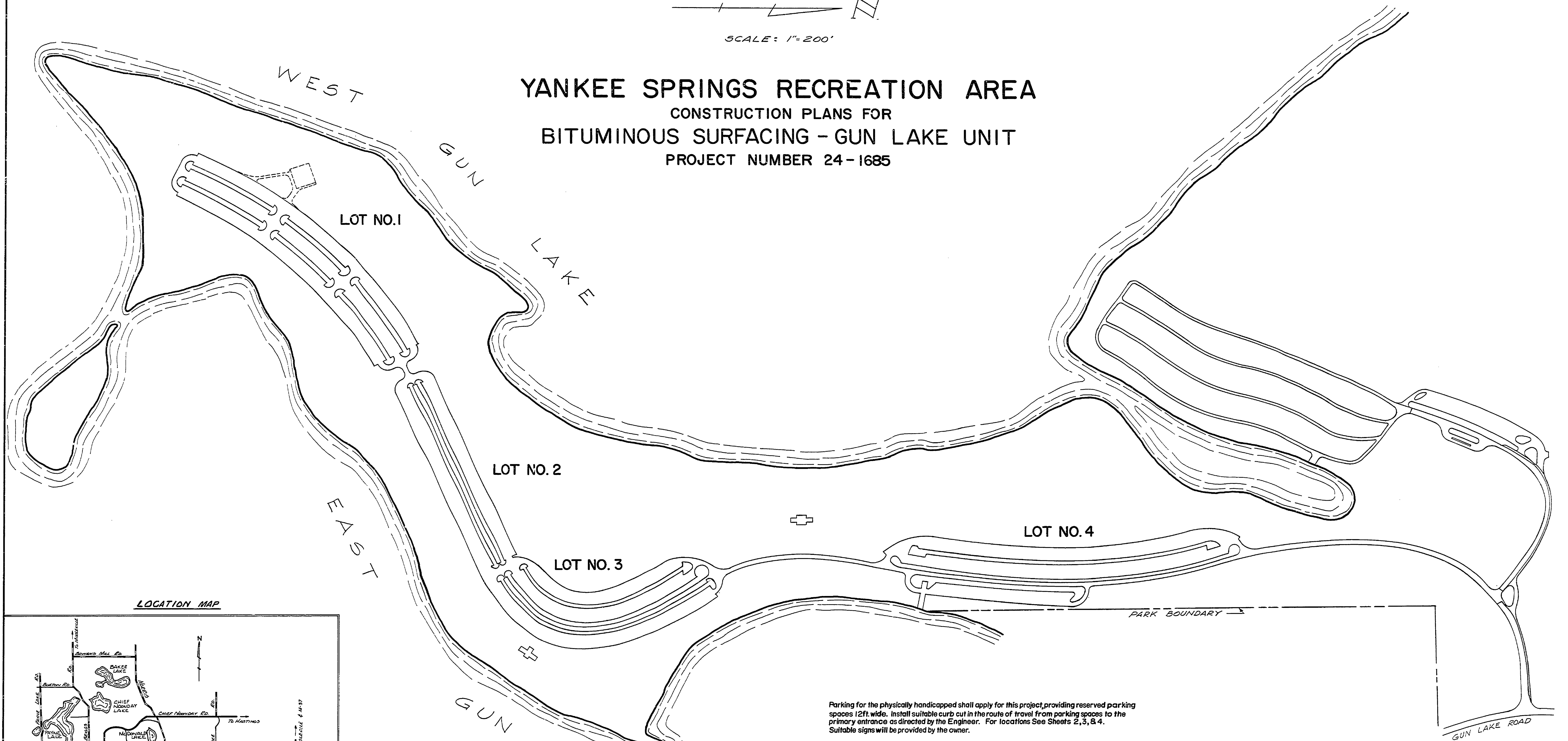


SCALE: 1"=200'

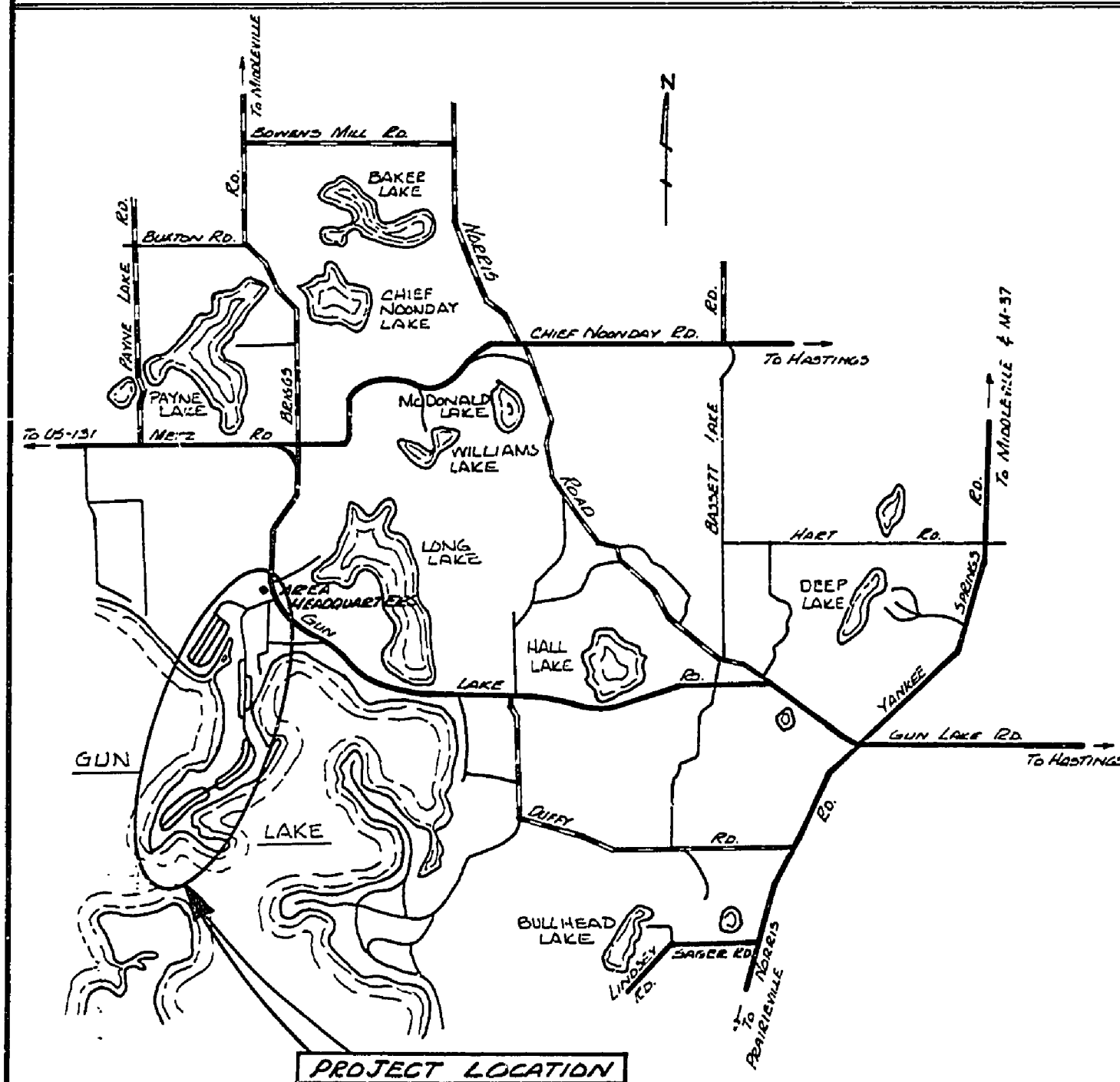
YANKEE SPRINGS RECREATION AREA

CONSTRUCTION PLANS FOR BITUMINOUS SURFACING - GUN LAKE UNIT

PROJECT NUMBER 24-1685



LOCATION MAP



Parking for the physically handicapped shall apply for this project, providing reserved parking spaces 12ft. wide. Install suitable curb cut in the route of travel from parking spaces to the primary entrance as directed by the Engineer. For locations See Sheets 2, 3, & 4. Suitable signs will be provided by the owner.

PLAN SHEET INDEX	
1 of 6	TITLE SHEET
2 of 6	PARKING LOT NO. 1
3 of 6	PARKING LOT NO. 2 & 3
4 of 6	PARKING AREA NO. 4 & BOAT LAUNCH
5 of 6	ENTRANCE ROAD
6 of 6	CAMP GROUND ROADS

NOTE: Shaded areas indicates limits of project.

PROJECT QUANTITIES		
1	SHAPE EXISTING GRAVEL SURFACE	79,200 S.Y.
2	22-A CONDITIONING AGGREGATE	50 Ton
3	22-A AGGREGATE, 5" DEPTH C.I.P.	915 S.Y.
4	22-A AGGREGATE, 3" DEPTH C.I.P.	13,935 S.Y.
5	BITUMINOUS PRIME COAT	21,920 Gal.
6	BITUMINOUS SURFACE COAT	68,486 Gal.
7	3I-A COVER AGGREGATE	2,751 Ton
8	RESHAPING EXIST. BITUMINOUS SURFACE	5.6 Sta.
9	SOIL STERILENT	250 Gal.

The quantities have been carefully computed and checked, but are not to be used for basis of determining payment for this project.

BUILDING COMMITTEE APPROVAL	
BY: _____	DATE: _____
RECOMMENDED FOR APPROVAL: <i>[Signature]</i> 4-10-75	
ENGINEERING OR ARCHITECTURAL SUPERVISOR DATE	
RECOMMENDED FOR APPROVAL: _____	
PROGRAM AND PLAN COORDINATOR DATE	
DIVISION/REGION APPROVAL	
BY: <i>[Signature]</i> 4/30/75	DATE: _____
DIVISION CHIEF/REGION MANAGER	
ENGINEERING DIVISION	
APPROVED: <i>[Signature]</i> 5-2-75	DATE: _____
CHIEF ENGINEER	

SURVEYED BY <i>L. SMITH</i>	3-75	DRAWN BY <i>RICE - SMITH</i>	3-74	NO. DATE BY REVISIONS	NO. DATE BY REVISIONS	MICHIGAN DEPARTMENT OF NATURAL RESOURCES	TITLE SHEET SHEET TITLE	YANKEE SPRINGS RECREATION AREA AREA OR PARK DAY-USE AREA BITUMINOUS SURFACING - GUN LAKE UNIT PROJECT
DESIGNED BY <i>MORGAN - SMITH</i>	3-76	CHECKED BY _____	DATE _____	1. _____	3. _____			PROJECT NO. <i>24-1685</i>
				2. _____	4. _____			SHEET <i>1</i> OF <i>6</i> PLAN NO. <i>E-149</i>