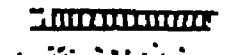
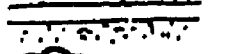


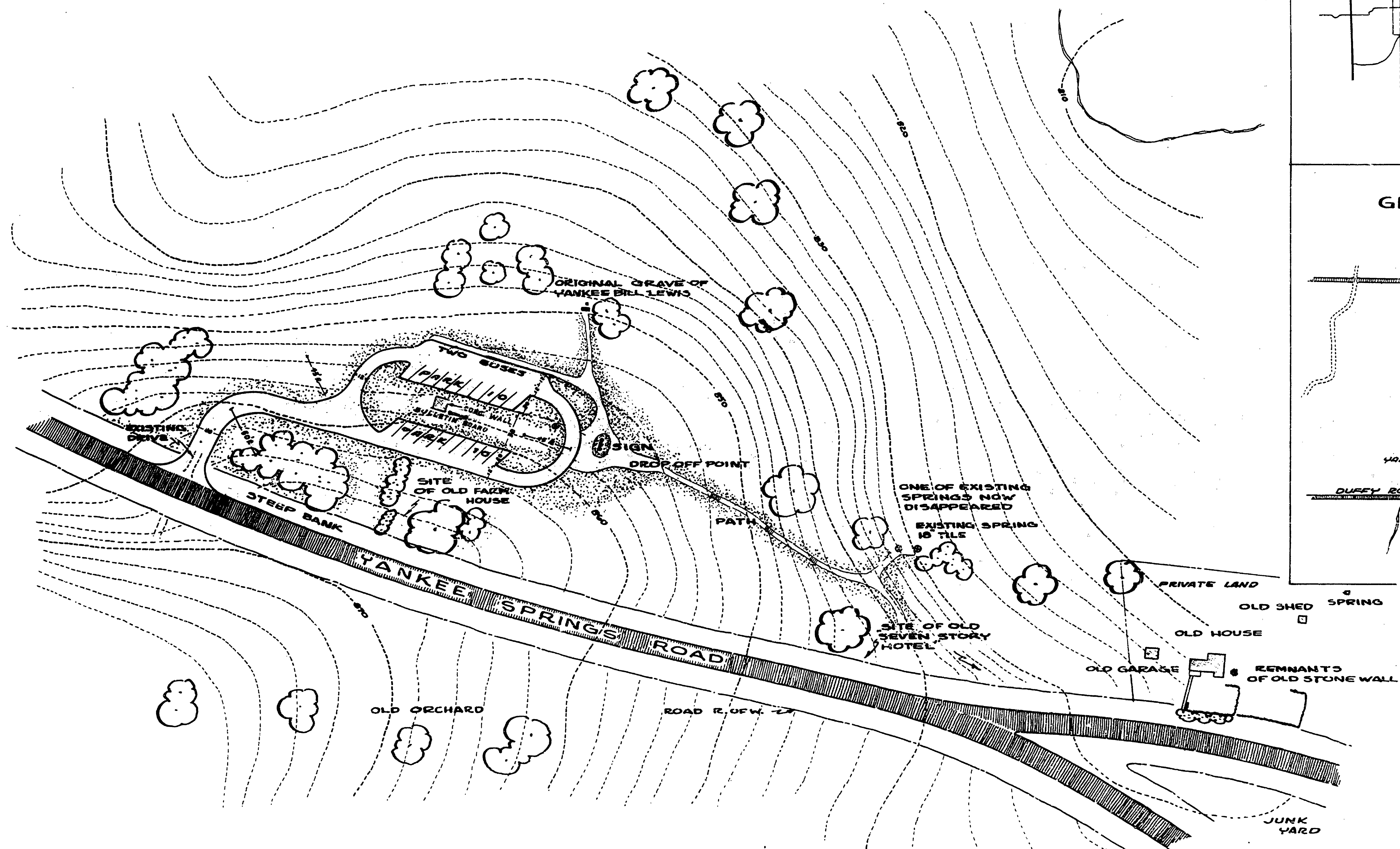
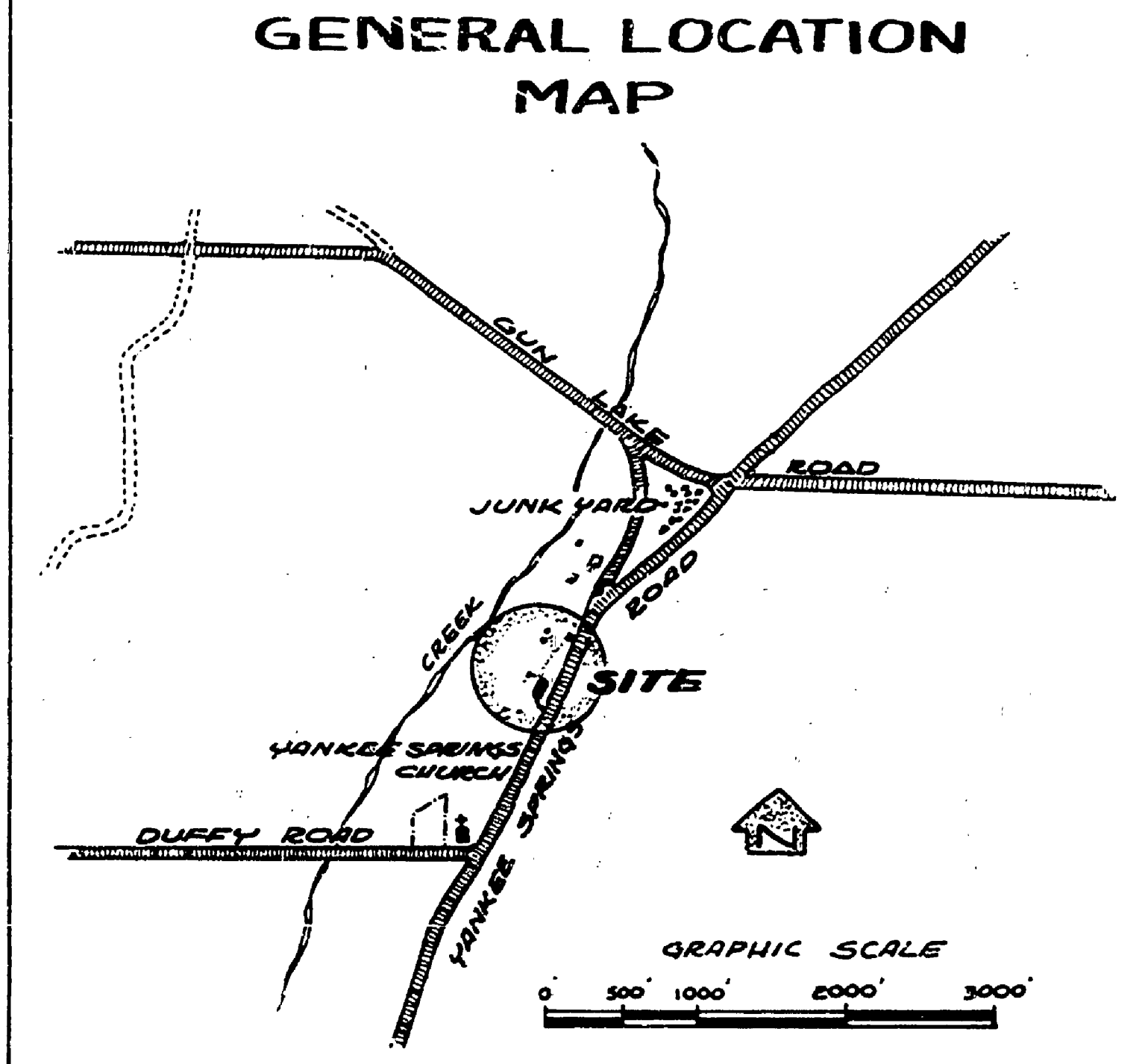
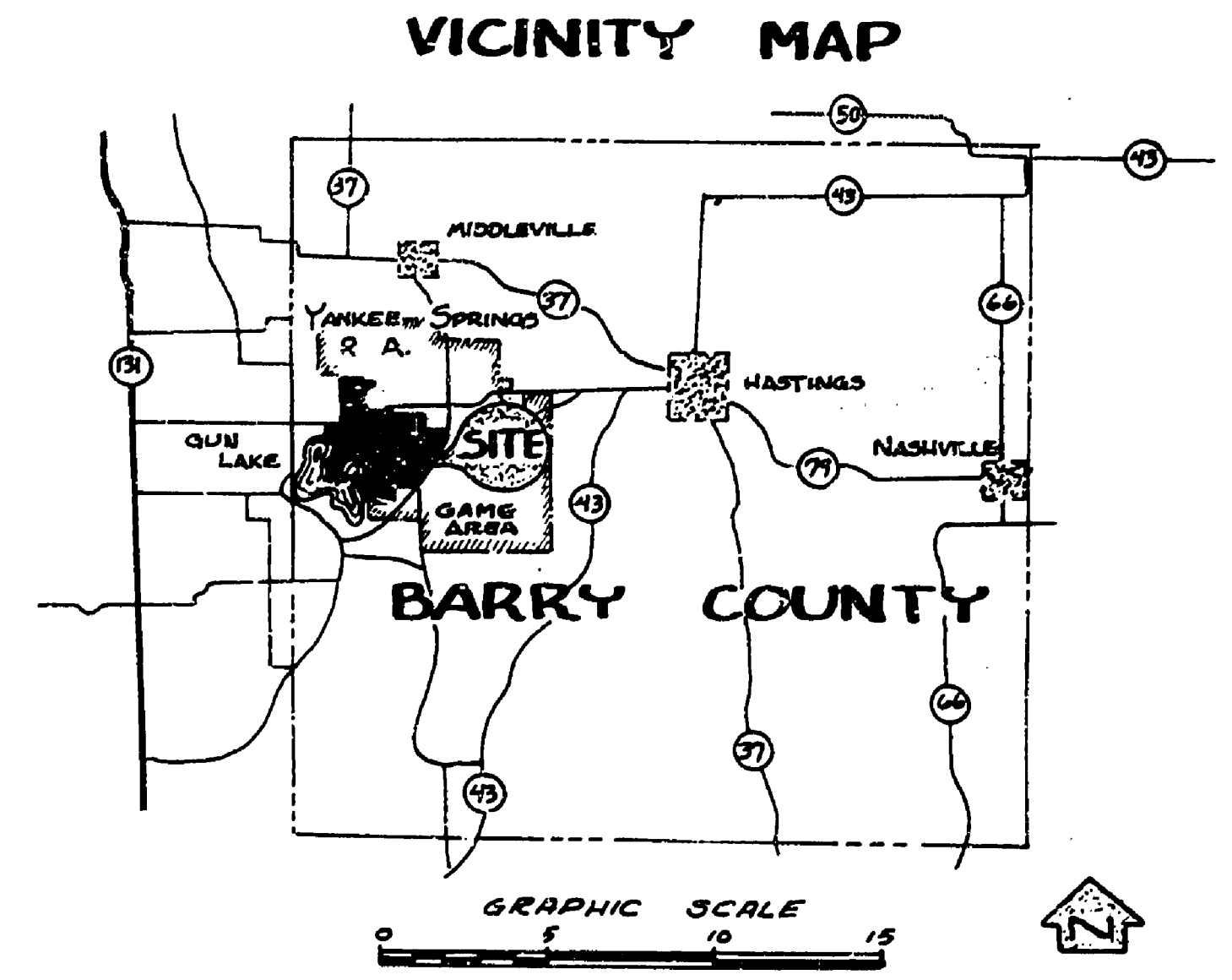


NOTES :

- THE 20 FOOT CONTOURS WERE ENLARGED FROM A 1951 U.S. GEOLOGICAL SURVEY MAP (HASTINGS QUADRANGLE - BARRY CO.). THE TWO FOOT CONTOUR INTERVALS, SHOWN ON THIS PLAN, WERE INTERPOLATED FROM THE ABOVE INFORMATION.
- THE EXISTING HISTORICAL INFORMATION WAS TAKEN FROM A PLAN OF THE AREA DRAWN BY C.F. BOENLER, JULY 23, 1951.

LEGEND :

-  EXISTING ROAD
-  PROPOSED ROAD
-  EXISTING VEGETATION
-  EXISTING CONTOURS



APPROVED BY

CHIEF OF PARKS DIVISION DATE

SURVEYED BY	DESIGNED BY	DRAWN BY	NO.	DATE	BY	REVISIONS	NO.	DATE	BY	REVISIONS
	L.C. MILLER	L.C. MILLER	1	2-10-66			1			
	L.C. MILLER	L.M.C.	2	2/66			2			

MICHIGAN DEPARTMENT OF CONSERVATION

YANKEE SPRINGS R. A.

SHEET NO. OF FOR PROJECT NO.

HISTORIC SITE SHEET 1 OF 1 PLAN NO. L-135

