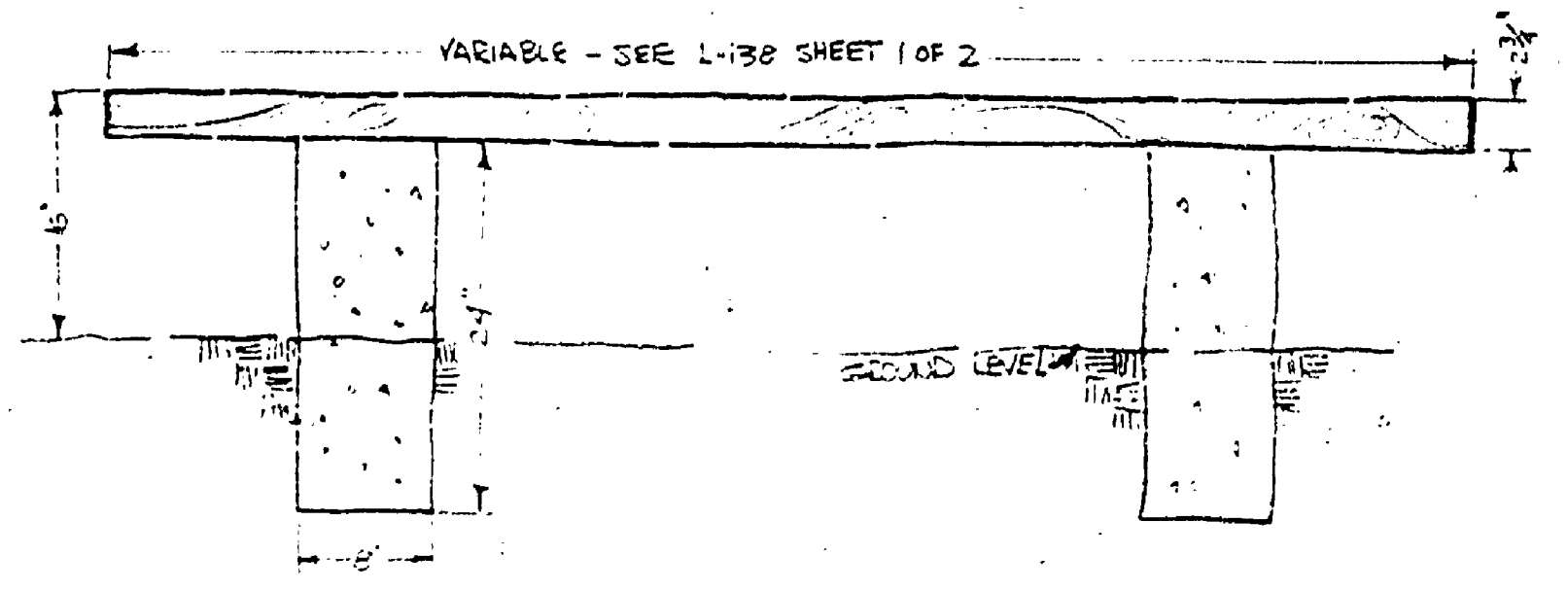
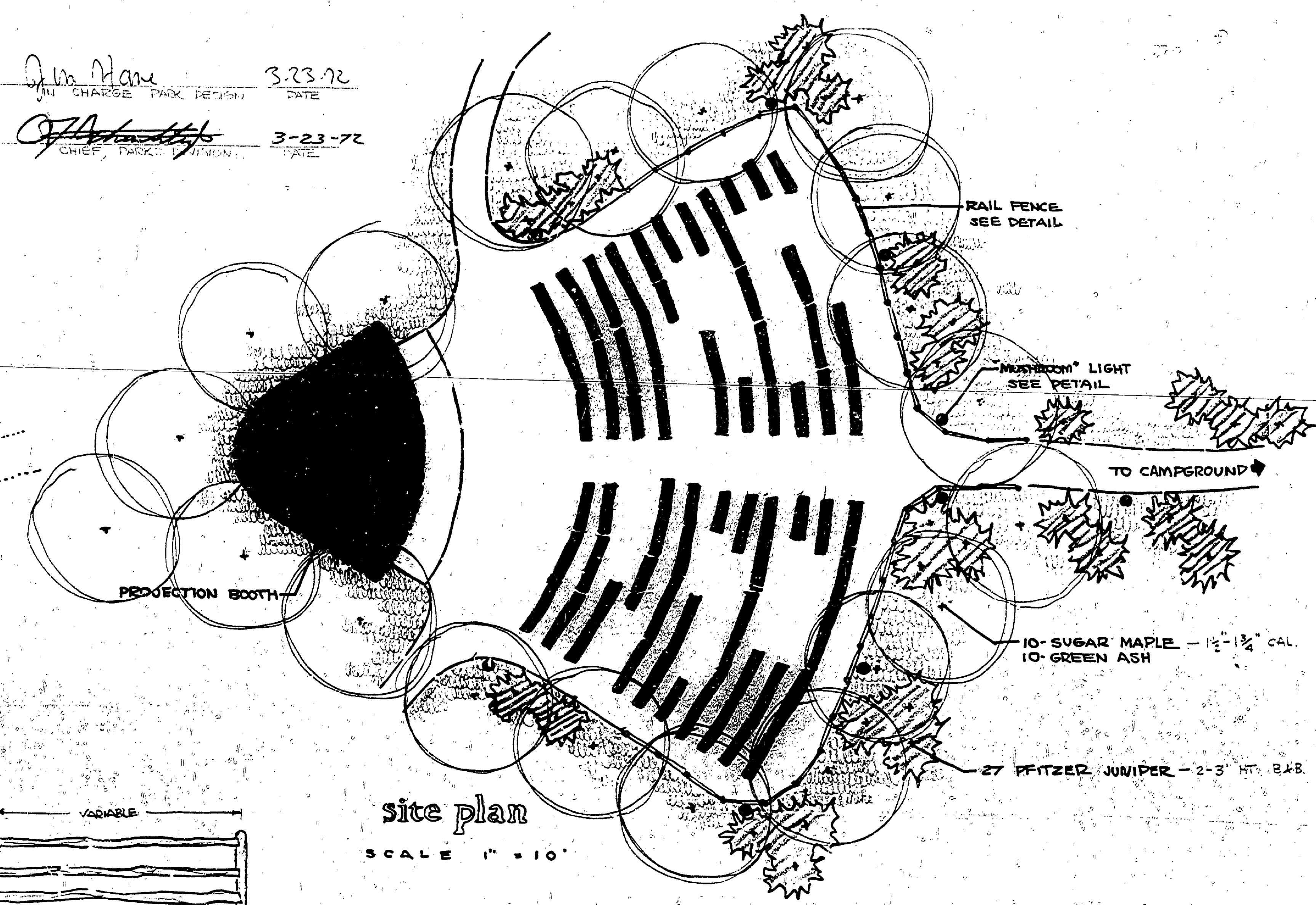


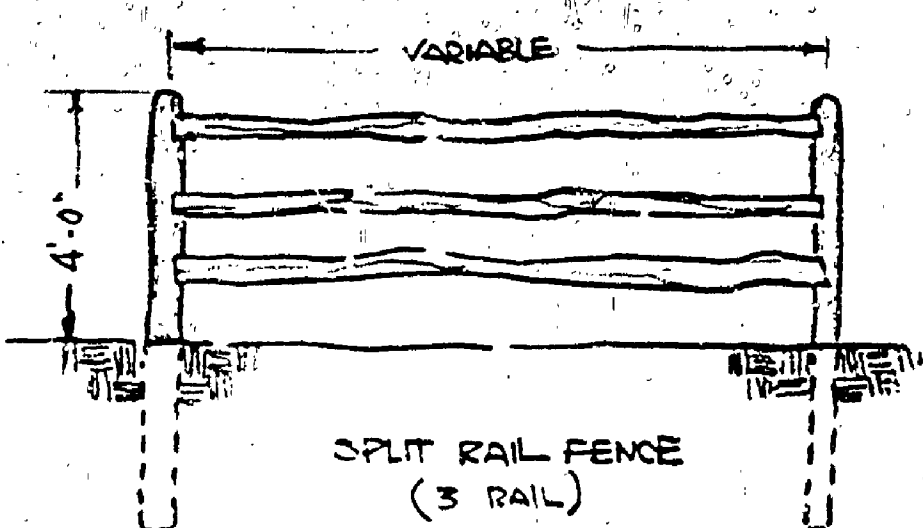
REVIEWED BY: Jim Hane 3-23-72  
IN CHARGE PARK DESIGN DATE

APPROVED BY: [Signature] 3-23-72  
CHIEF PARK DESIGNER DATE

QUANTITIES:  
450 CU. YDS. FILL MATERIAL  
250 CU. YDS. TOPSOIL  
40 CU. YDS. GRAVEL  
15 CU. YDS. WOOD CHIPS



bench details  
SCALE - 1" = 1'-0"



|                     |                  |         |     |      |    |           |     |      |    |           |  |                   |                          |                |
|---------------------|------------------|---------|-----|------|----|-----------|-----|------|----|-----------|--|-------------------|--------------------------|----------------|
| SURVEYED BY         | DRAWN BY KESSLER | 3/72    | NO. | DATE | BY | REVISIONS | NO. | DATE | BY | REVISIONS | MICHIGAN DEPARTMENT OF NATURAL RESOURCES | amphitheater plan | YANKEE SPRINGS REC. AREA | PROJECT NO.    |
| DESIGNED BY KESSLER | CHECKED BY R. GH | 3/21/72 | 1.  |      |    |           | 3.  |      |    |           |  |                   | AREA OR PARK             | SHEET 2 OF 2   |
| DATE                |                  |         | 2.  |      |    |           | 4.  |      |    |           |  |                   | PROJECT                  | PLAN NO. L-138 |