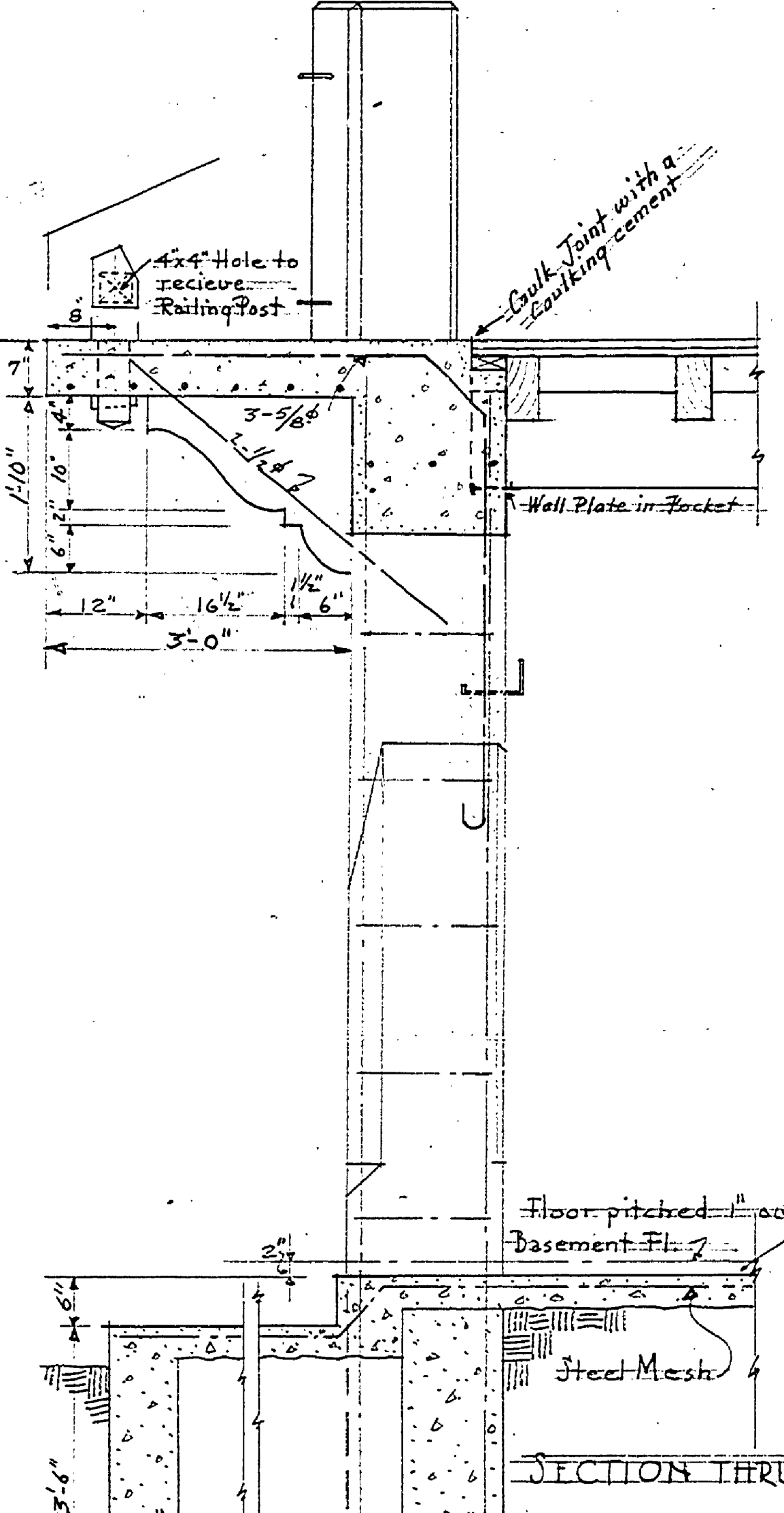
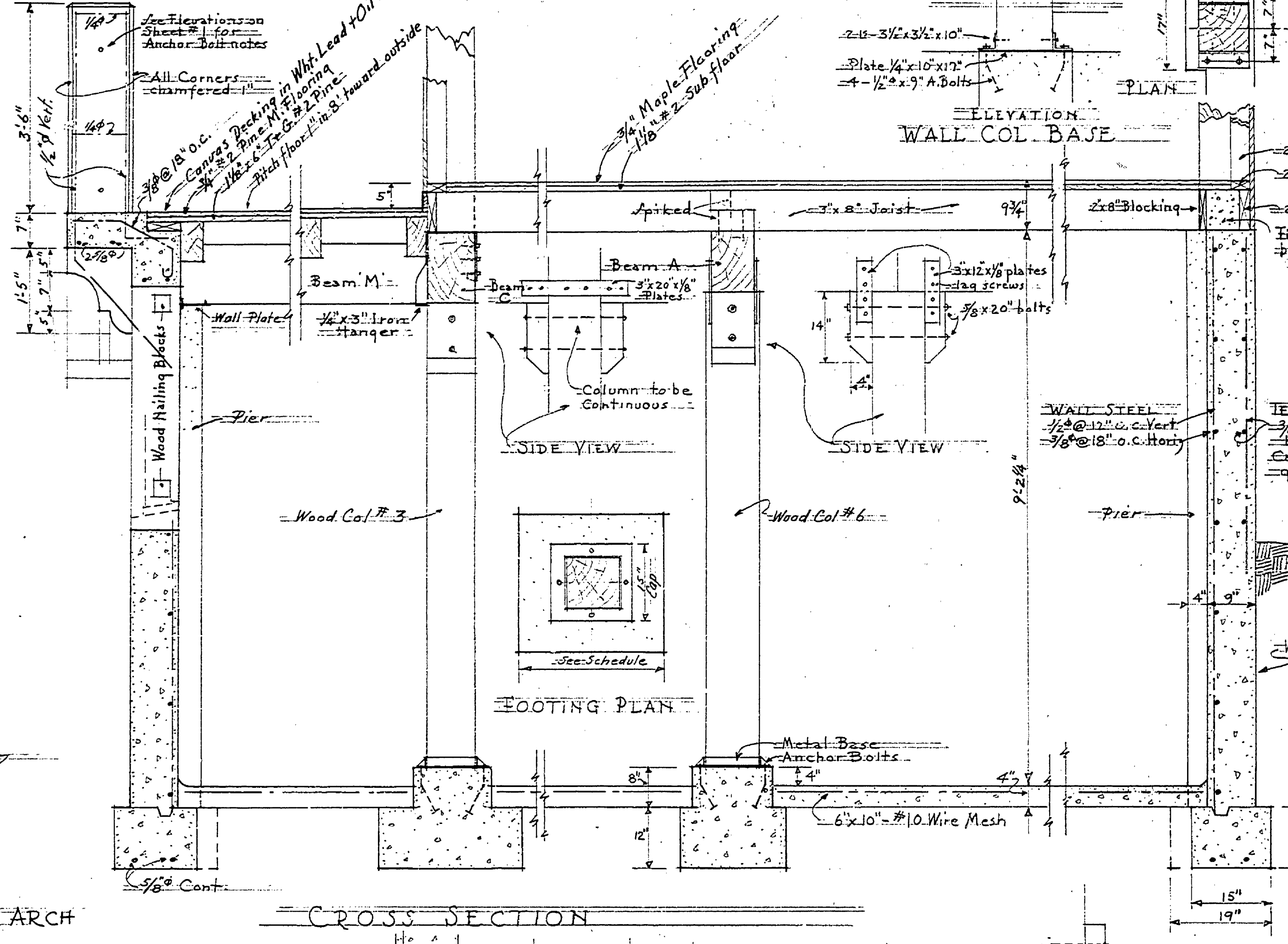


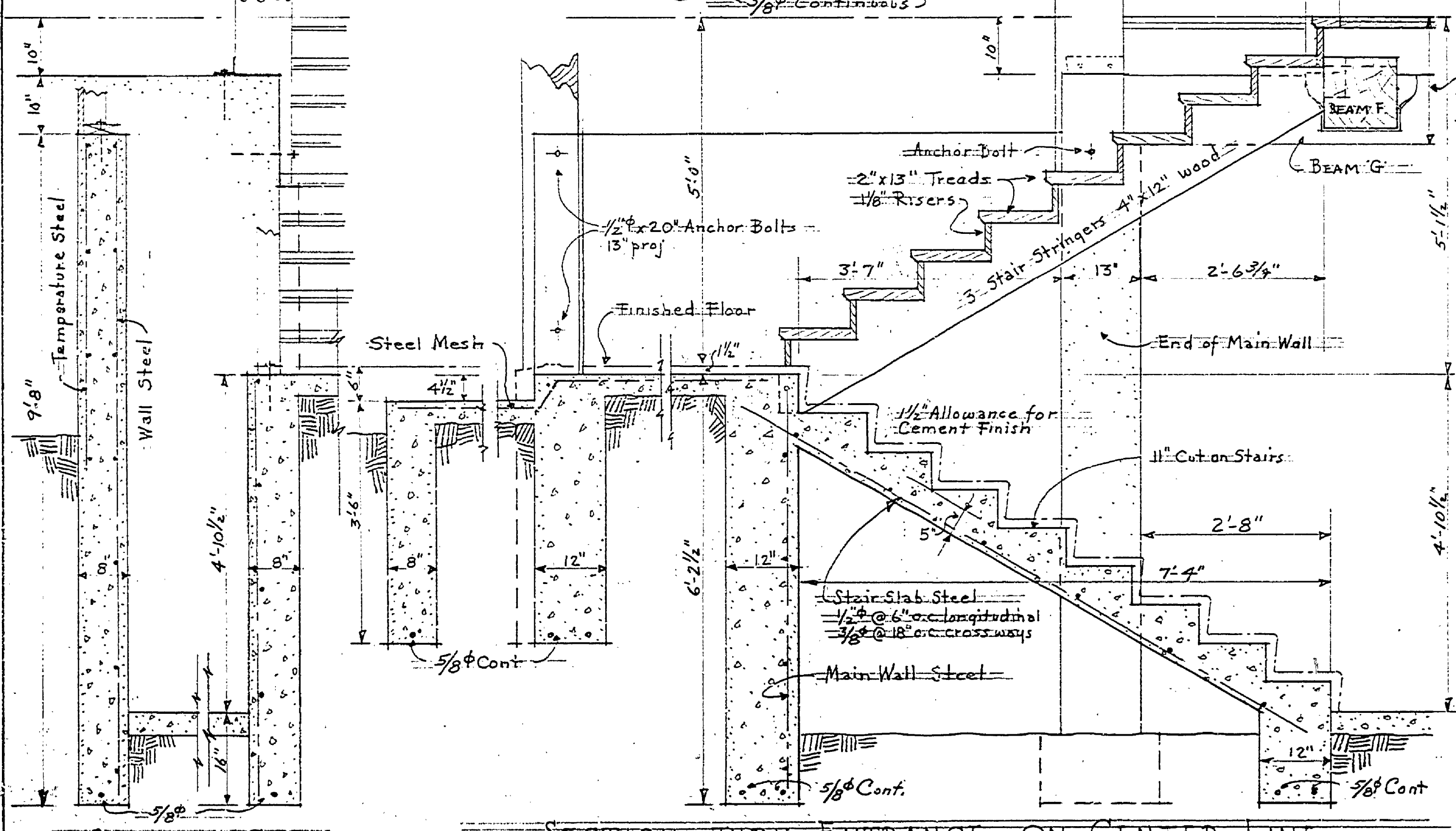
ELEVATION OF ARCHES & PIERS



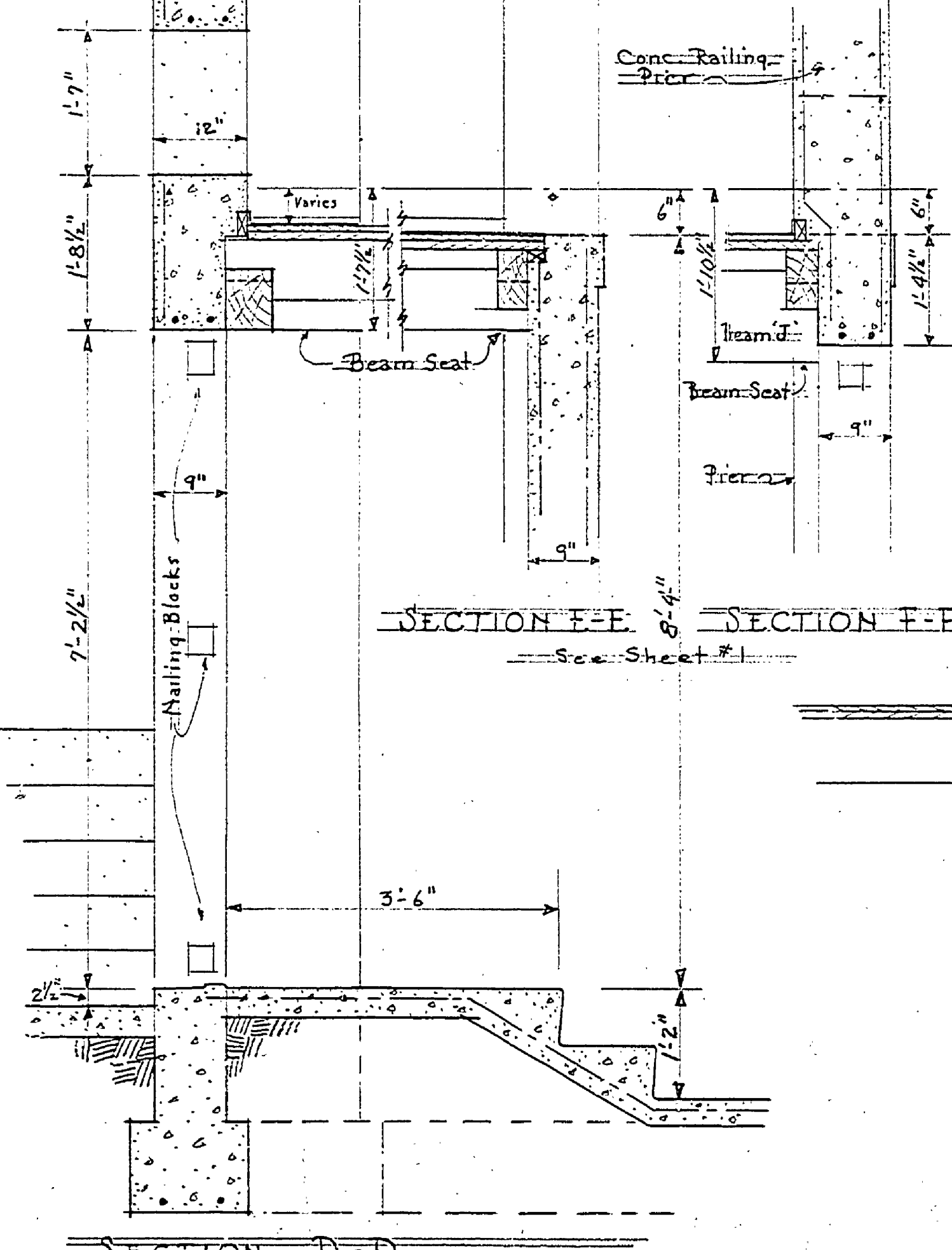
SECTION THRU ARCH



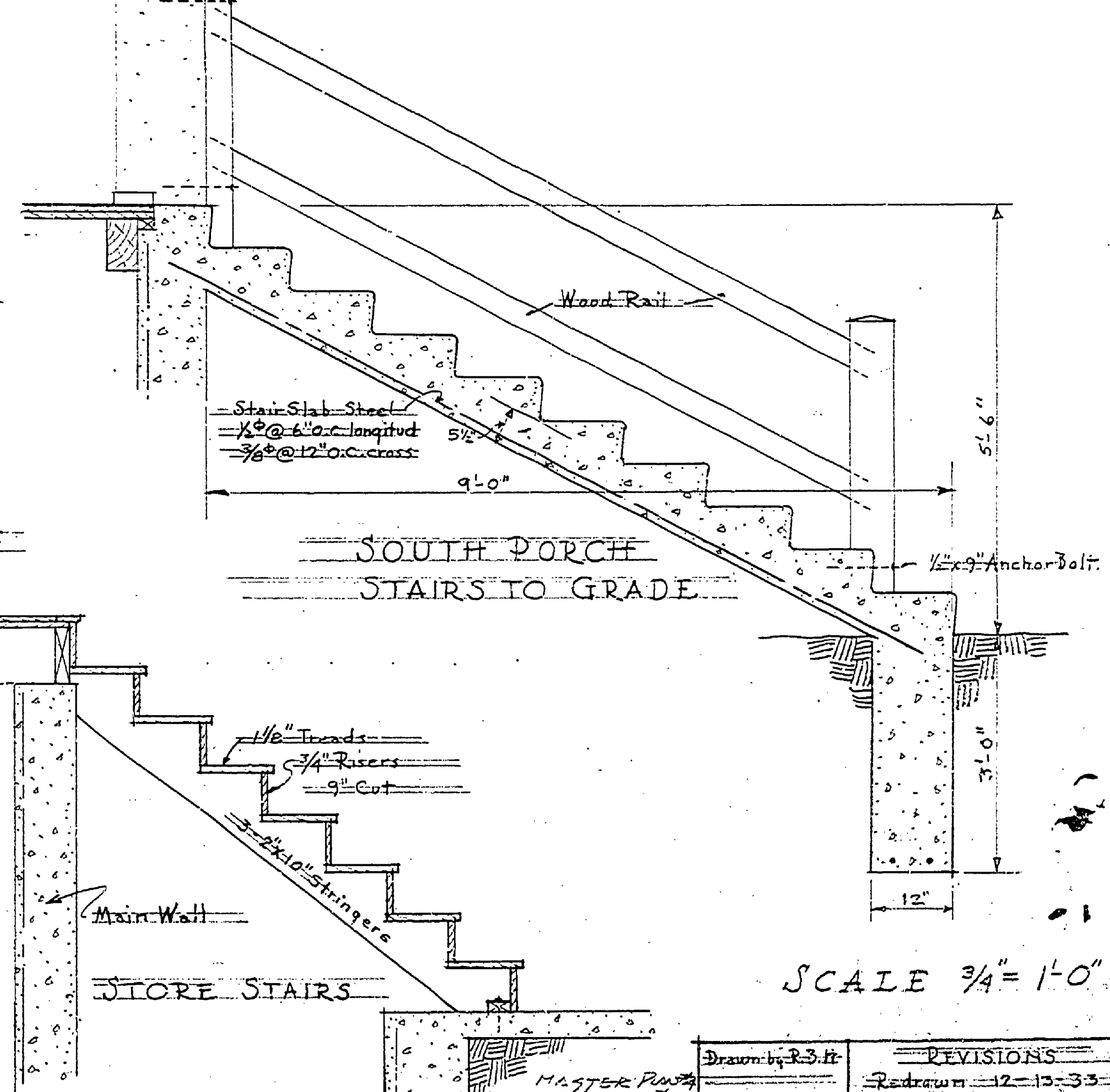
CROSS SECTION



SECTION THRU ENTRANCE ON CENTER LINE



SECTION D-D



SOUTH PORCH STAIRS TO GRADE

STORE STAIRS

SCALE 3/4" = 1'-0"

Drawn by: J.S.H.	REVISIONS	SHEET
Redrawn: 12-13-33		2
Ludington		

A-98