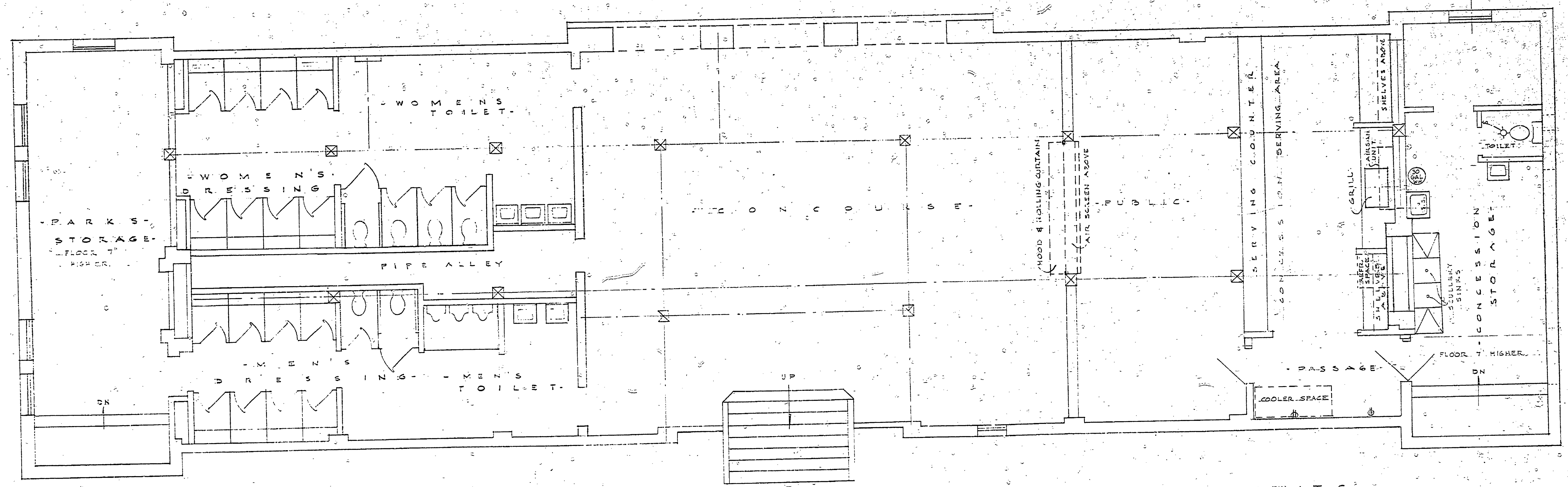
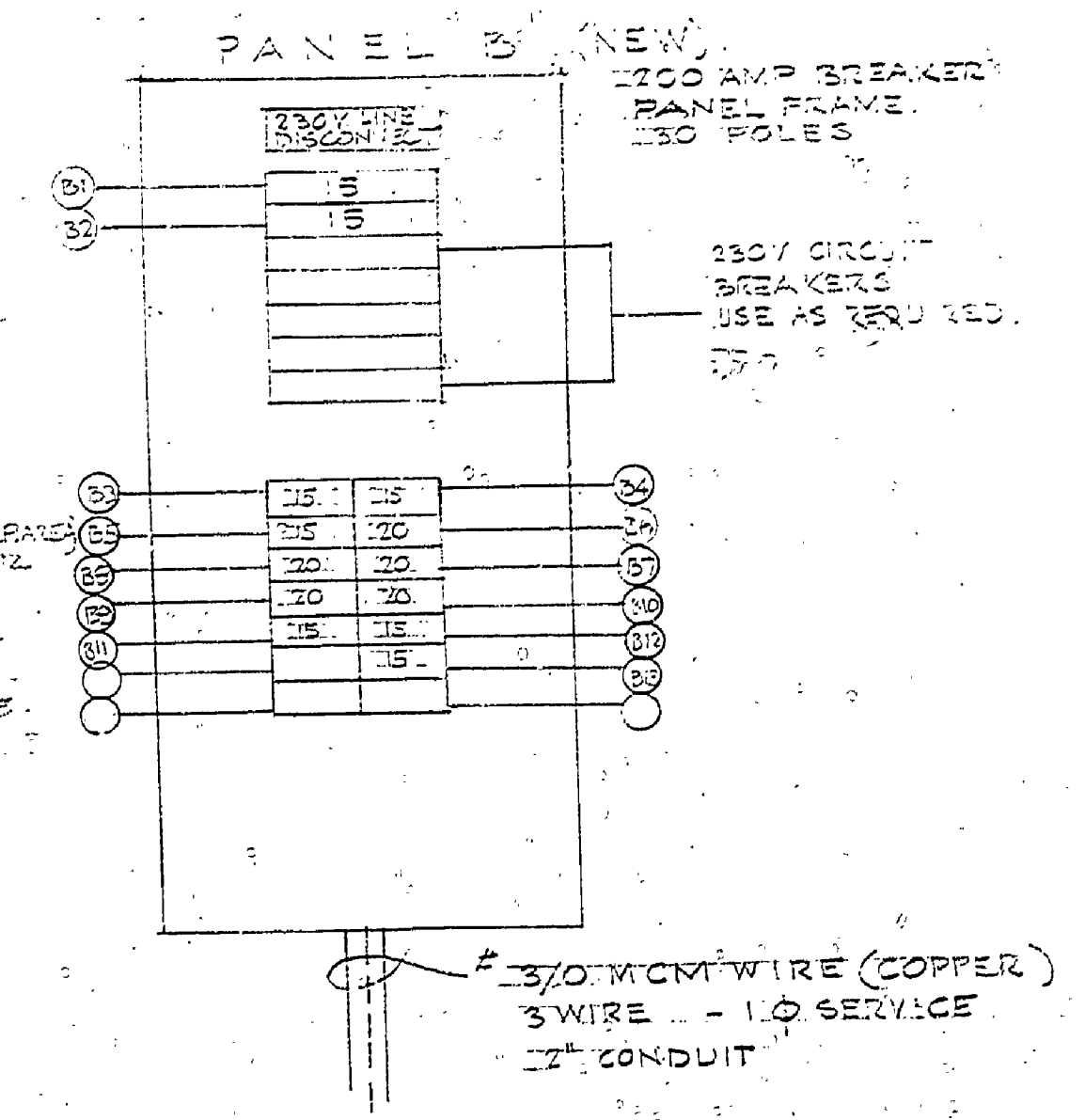


- CIRCUITS -
- B1 230V - HOT WATER HEATER.
 - B2 230V - AIR SAN UNIT BY GRILL
 - B3 115V - LIGHTING ENTRANCE CONCESSION PUBLIC AREA-PASSAGE
 - B4 115V - LIGHTING CONCESSION SETTING AND FOOD PREPARATION AREA
 - B5 115V - LIGHTING CONCESSION STORAGE AREA
 - B6 115V - CONV. OUTLETS CONCESSION TOP RECEPTACLES UNDER COUNTER (FOOD PREPARATION AREA)
 - B7 115V - CONVENIENCE OUTLETS CONCESSION FOOD PREPARATION
 - B8 115V - CONV. OUTLETS TOP RECEPTACLE STORAGE & OFFICE
 - B9 115V - CONV. OUTLETS BOTTOM RECEPTACLE STORAGE OFFICE
 - B10 115V - CONV. OUTLETS UNDER CONCESSION SERVING COUNTER
 - B11 115V - FLY FAN CONTROLLER
 - B12 115V - FLY FAN CONTROLLER
 - B13 115V - FLY FAN CONTROLLER



ELECTRICAL CIRCUITS

SURVEYED BY		DRAWN BY DDP		NO. DATE BY		REVISIONS		NO. DATE BY		REVISIONS		MICHIGAN DEPARTMENT OF NATURAL RESOURCES		LUDINGTON STATE PARK AREA OR PARK		PROJECT NO. 24-1012	
DESIGNED BY H.O.H.		CHECKED BY		1. DATE				3. DATE				ELECTRICAL CIRCUITS & INTERIOR ELEVATIONS SHEET TITLE		REMODEL BEACH HOUSE & CONCESSION PROJECT		SHEET 6 OF 7 PLAN NO. A-95-A	