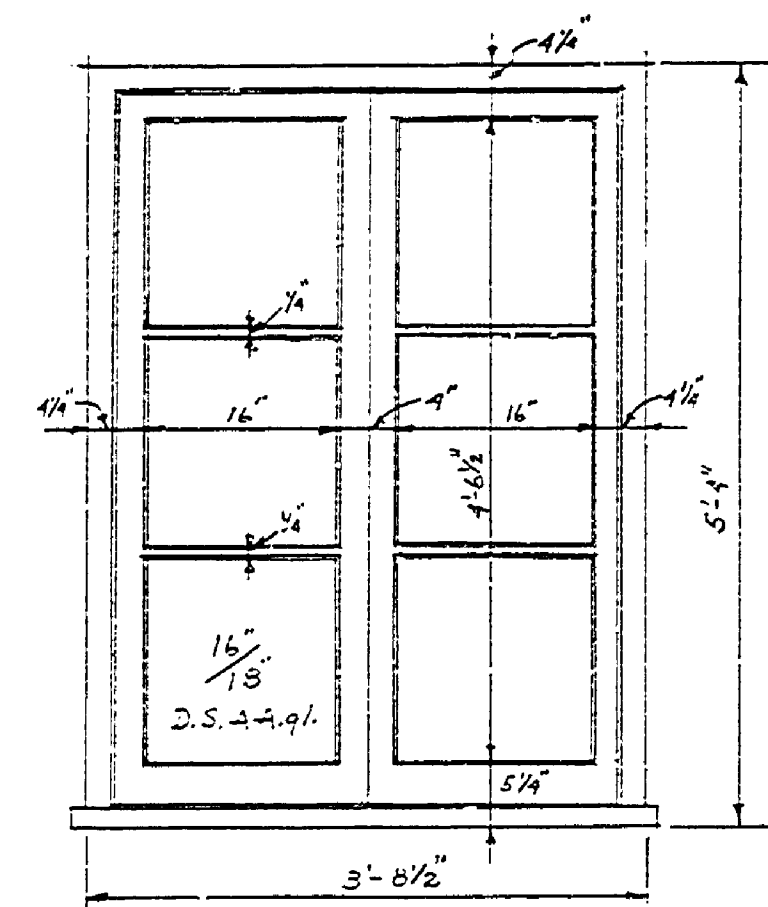
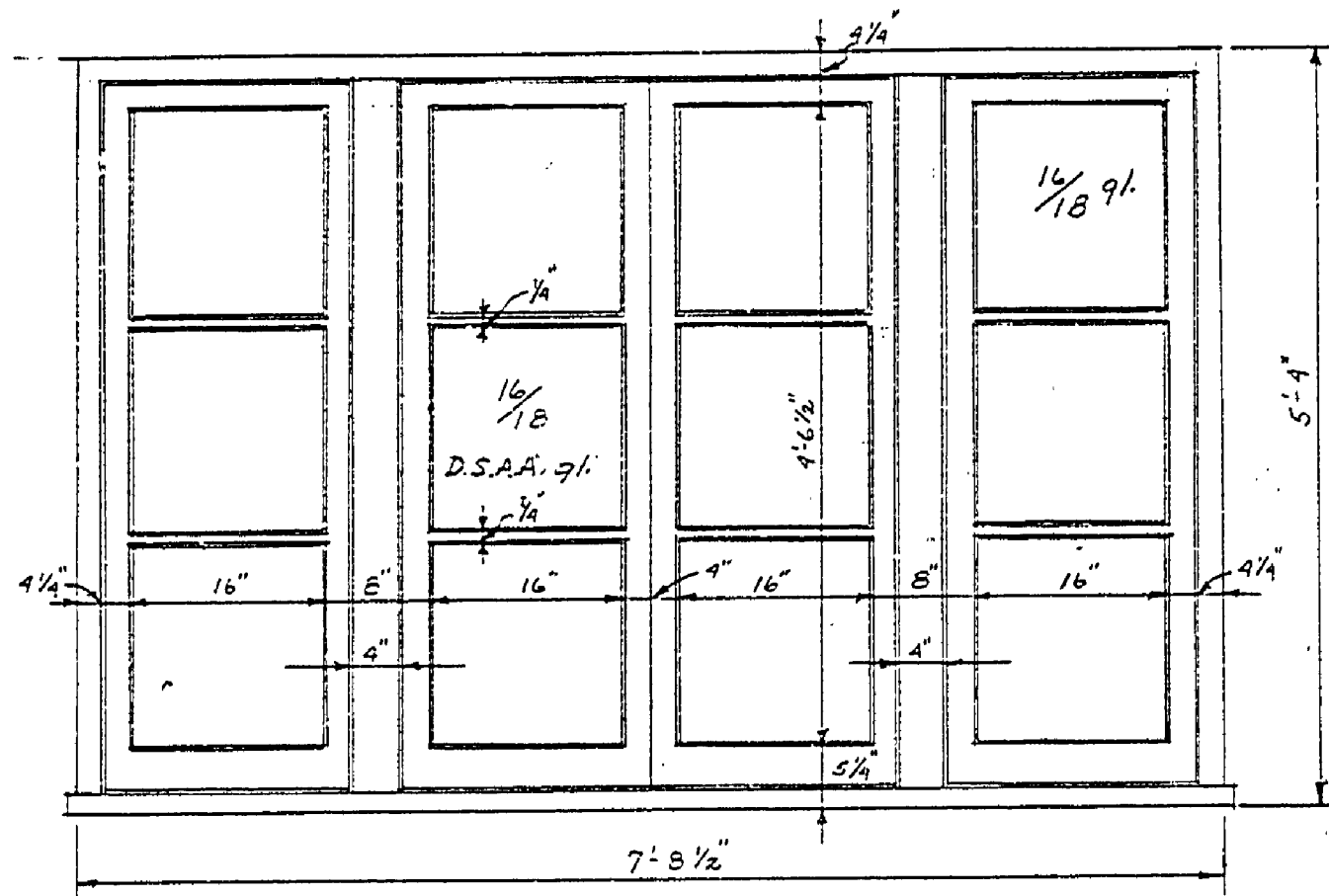


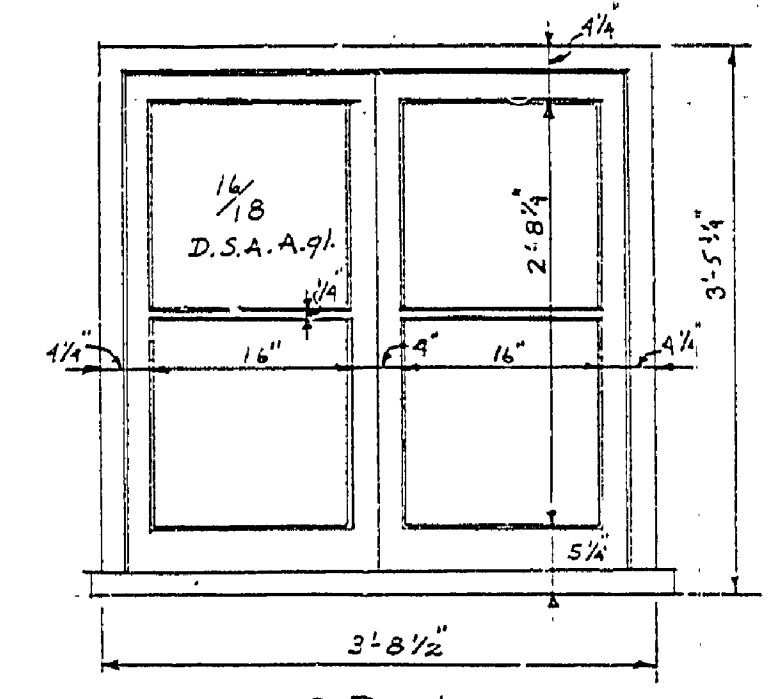
4 REQ'D.  
ELEVATION WINDOW A  
Scale 3/4"=1'-0"



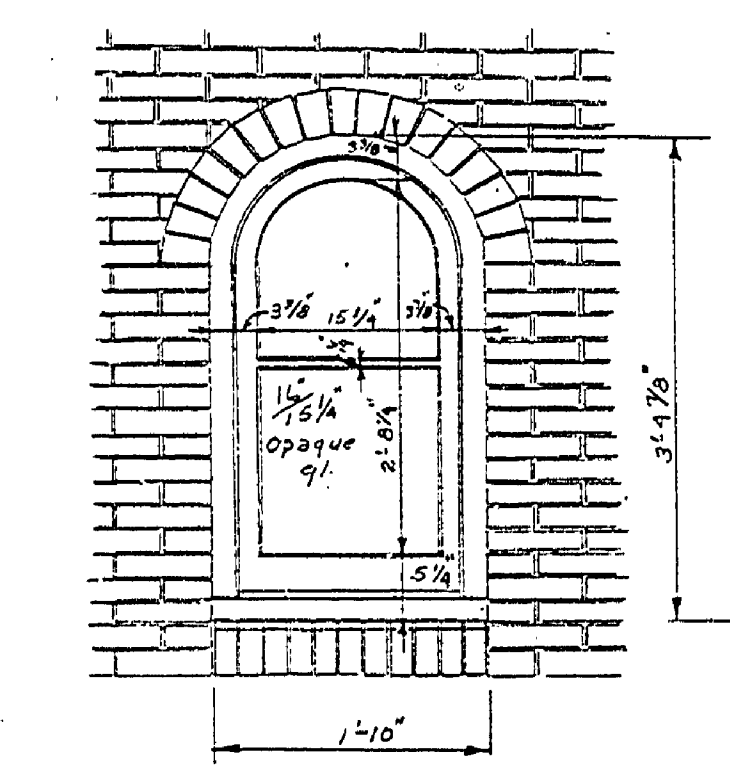
2 REQ'D.  
ELEVATION WINDOW B  
Scale 3/4"=1'-0"



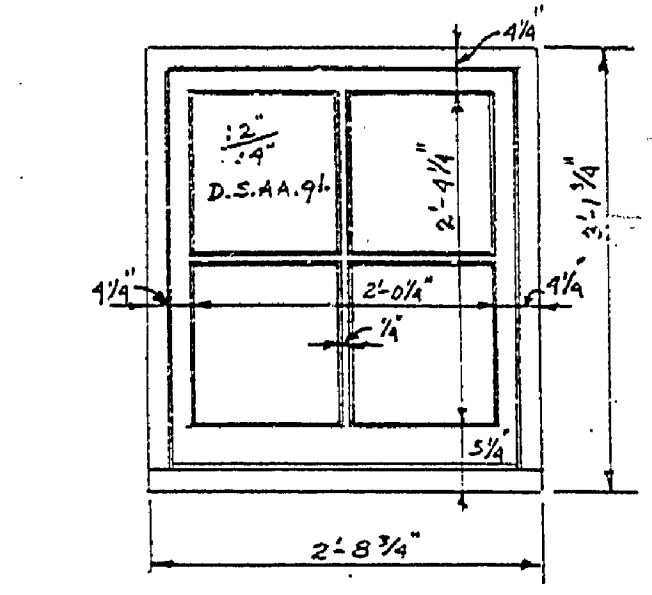
4 REQ'D.  
ELEVATION WINDOW C  
Scale 3/4"=1'-0"



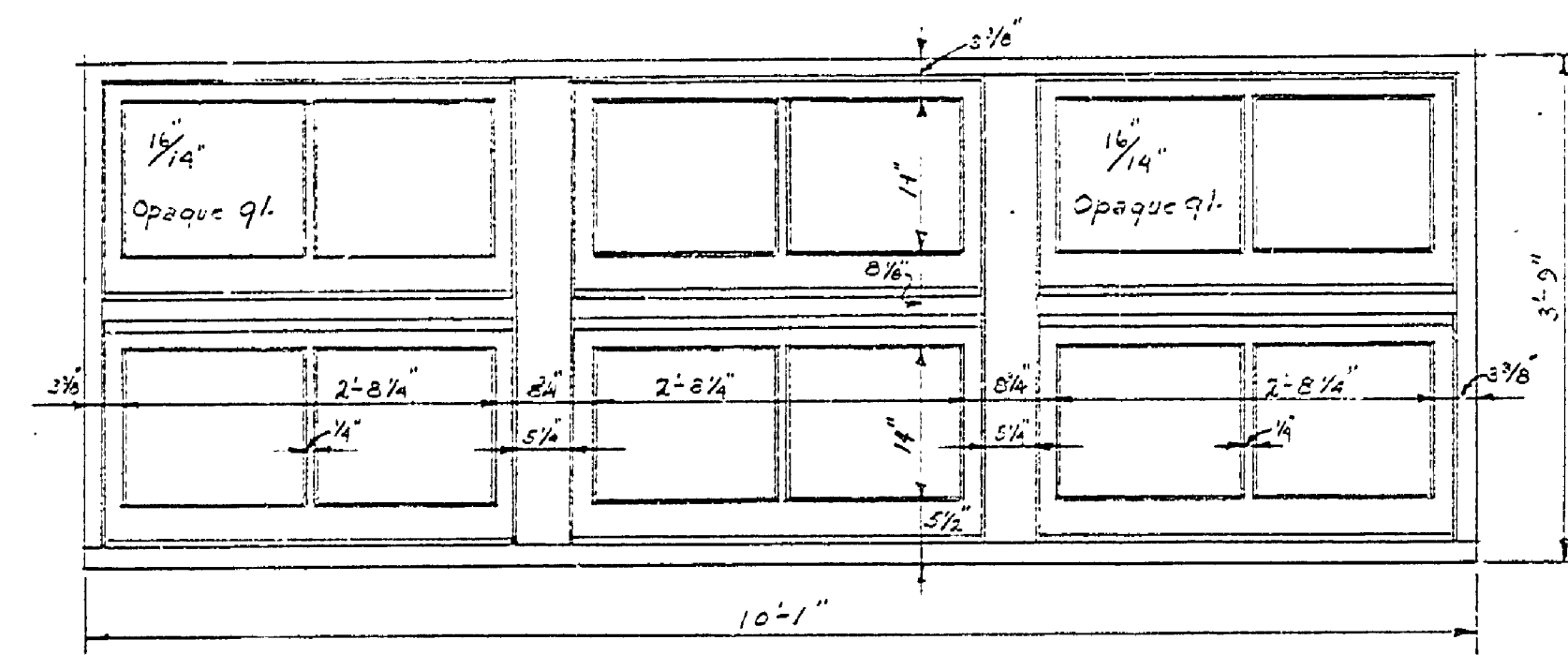
2 REQ'D.  
ELEVATION WINDOW D  
Scale 3/4"=1'-0"



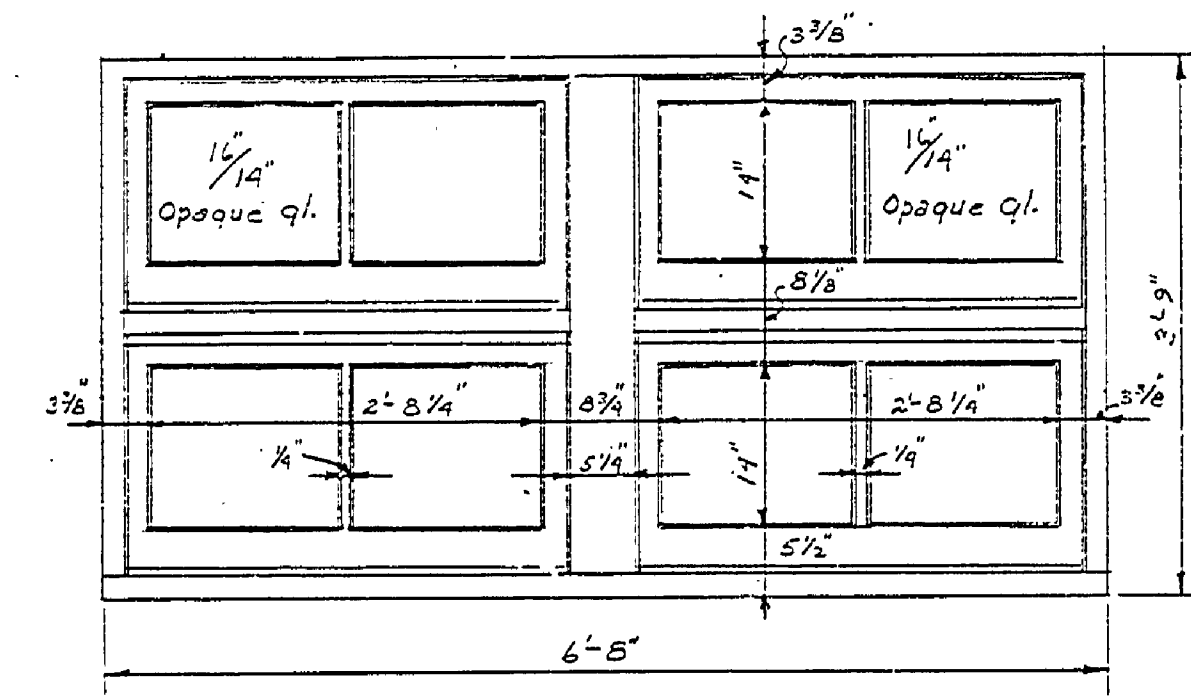
1 REQ'D.  
ELEVATION WINDOW E  
Scale 3/4"=1'-0"



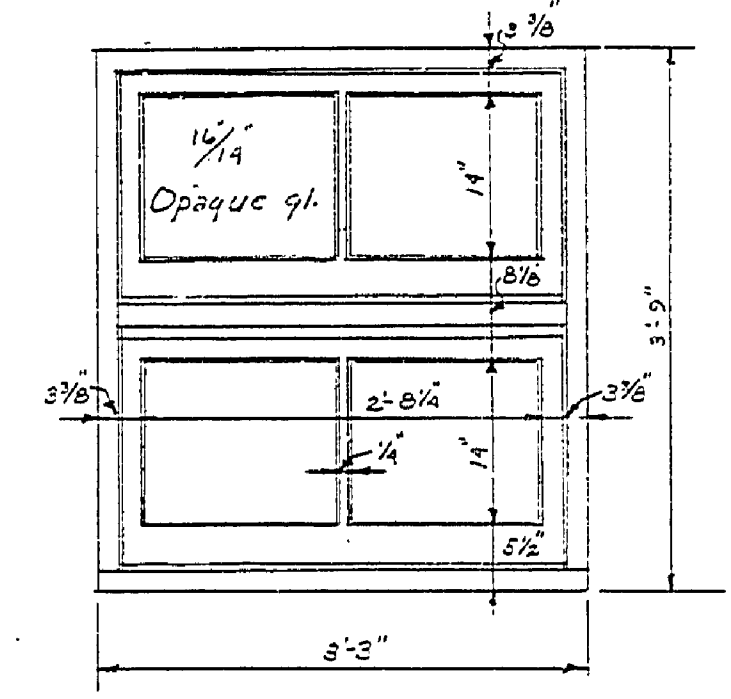
2 REQ'D.  
ELEVATION WINDOW F  
Scale 3/4"=1'-0"



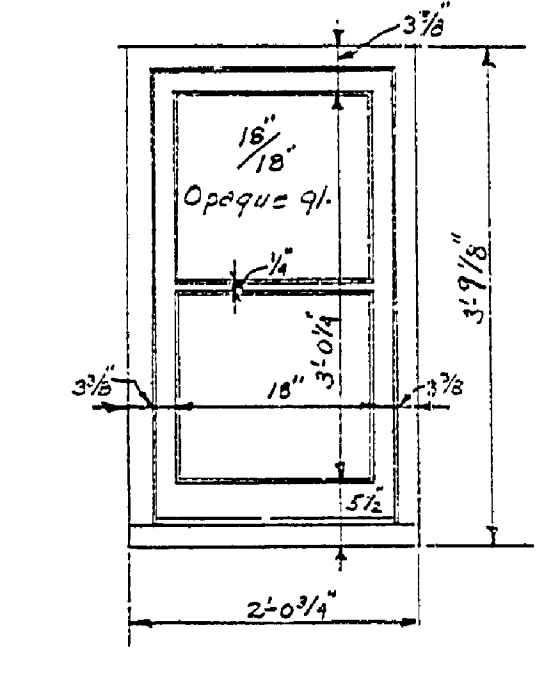
6 REQ'D.  
ELEVATION WINDOW H  
Scale 3/4"=1'-0"



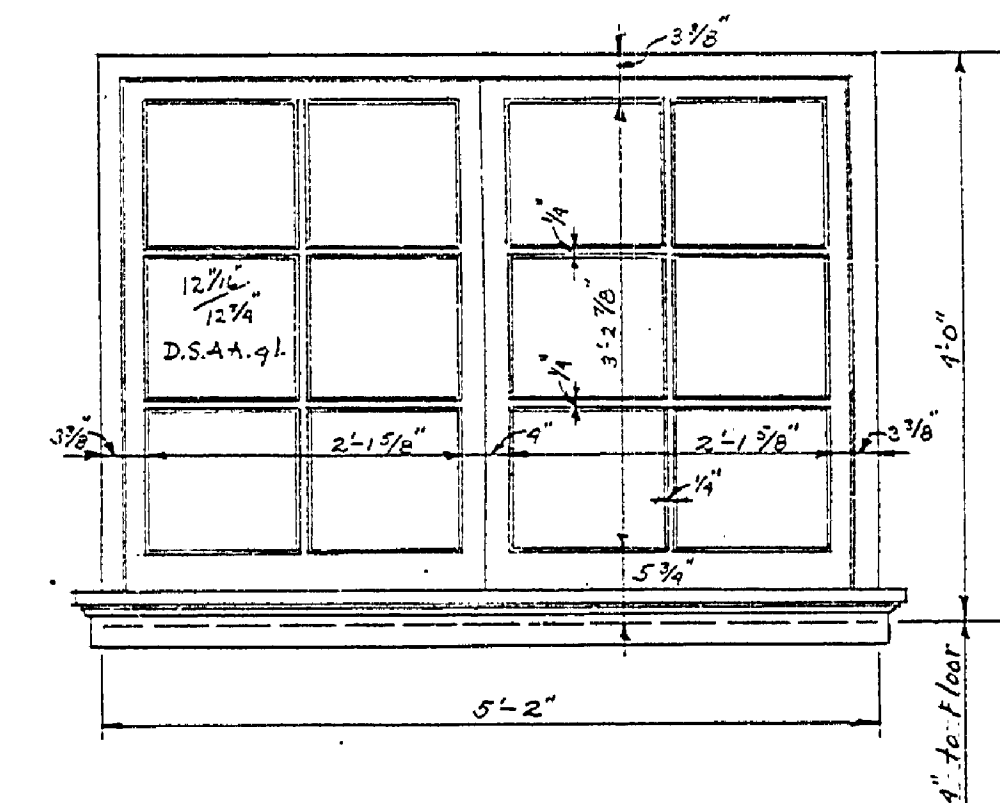
2 REQ'D.  
ELEVATION WINDOW I  
Scale 3/4"=1'-0"



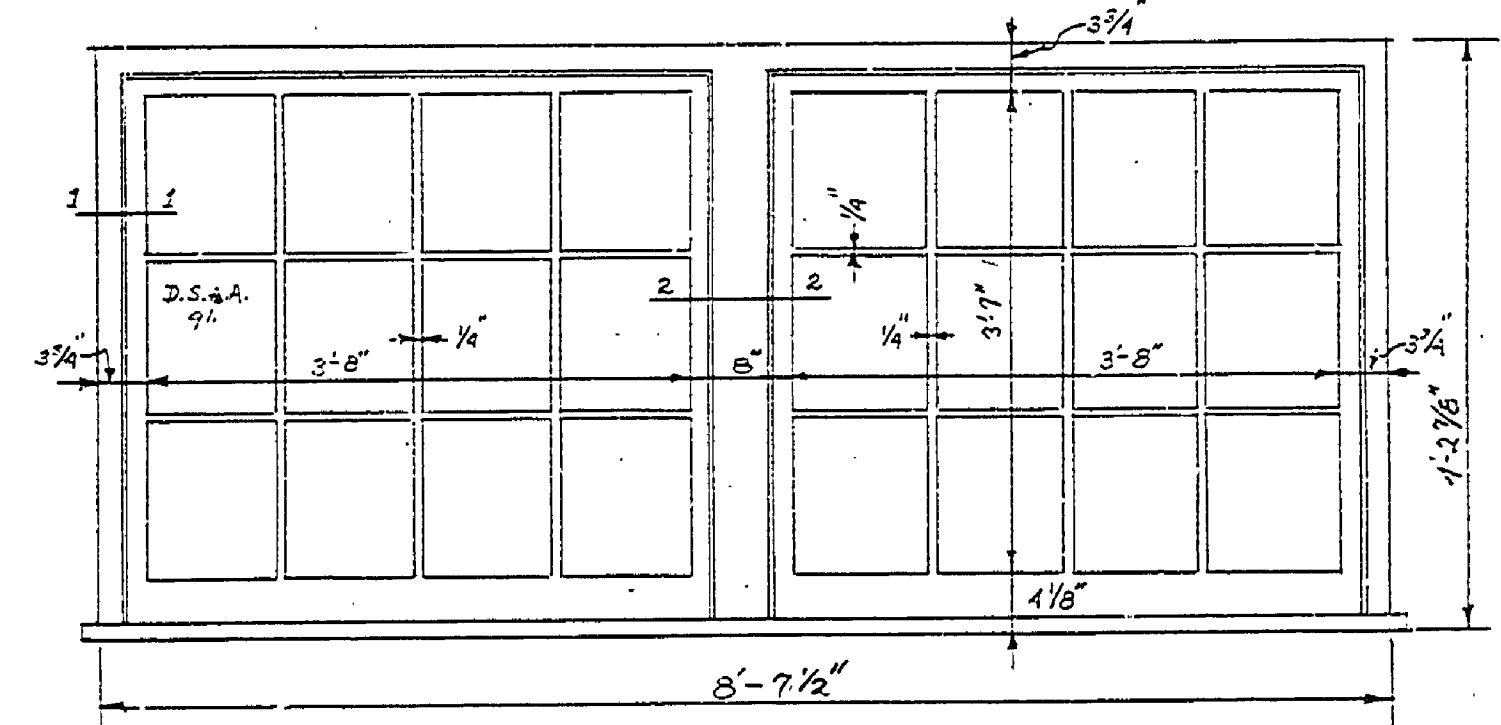
10 REQ'D.  
ELEVATION WINDOW J  
Scale 3/4"=1'-0"



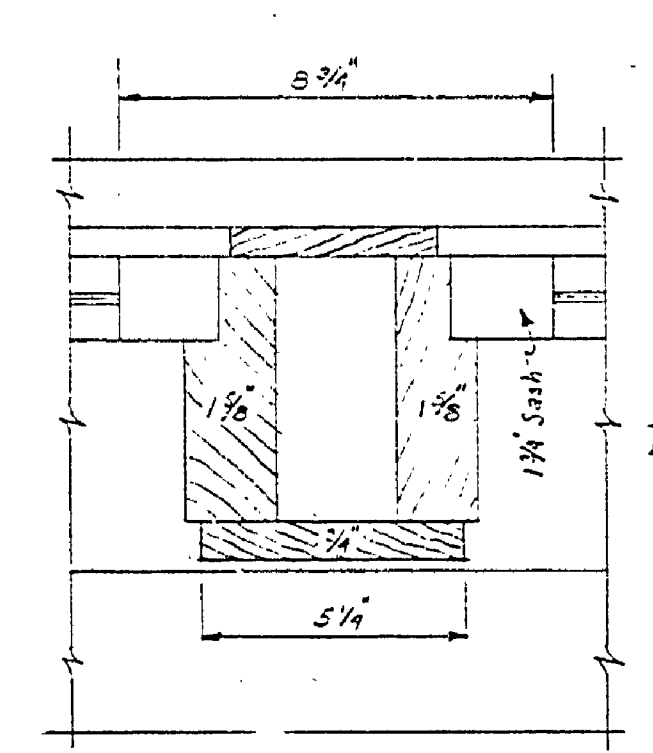
2 REQ'D.  
ELEVATION WINDOW K  
Scale 3/4"=1'-0"



1 REQ'D.  
ELEVATION WINDOW L  
Scale: 3/4"=1'-0"

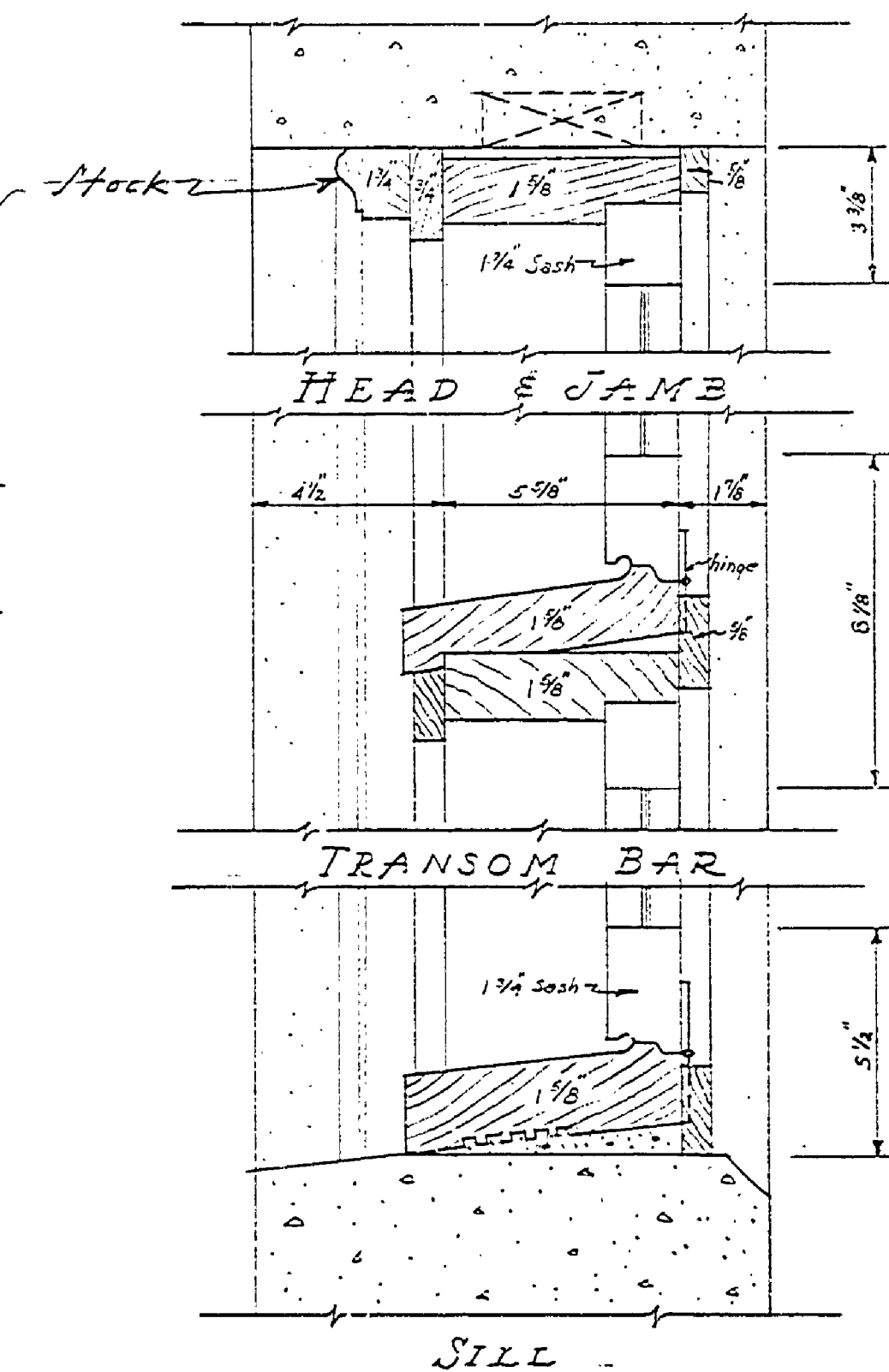


1 REQ'D.  
ELEVATION WINDOW G  
Scale 3/4"=1'-0"

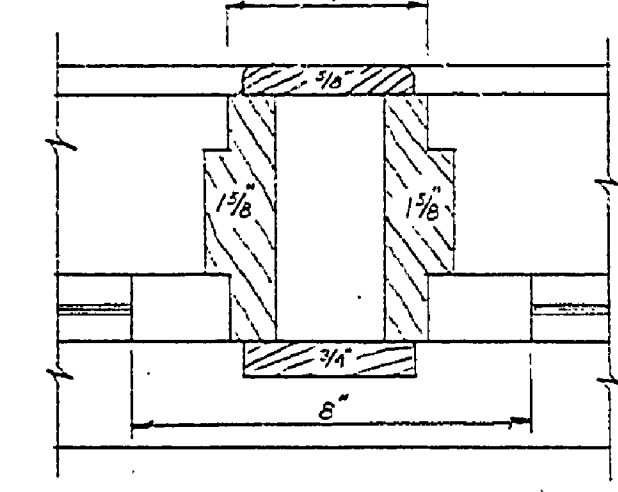


MULLION

Sash to be hinged at the bottom, to swing in and to be equipped with brass chains at top and pole type catches.

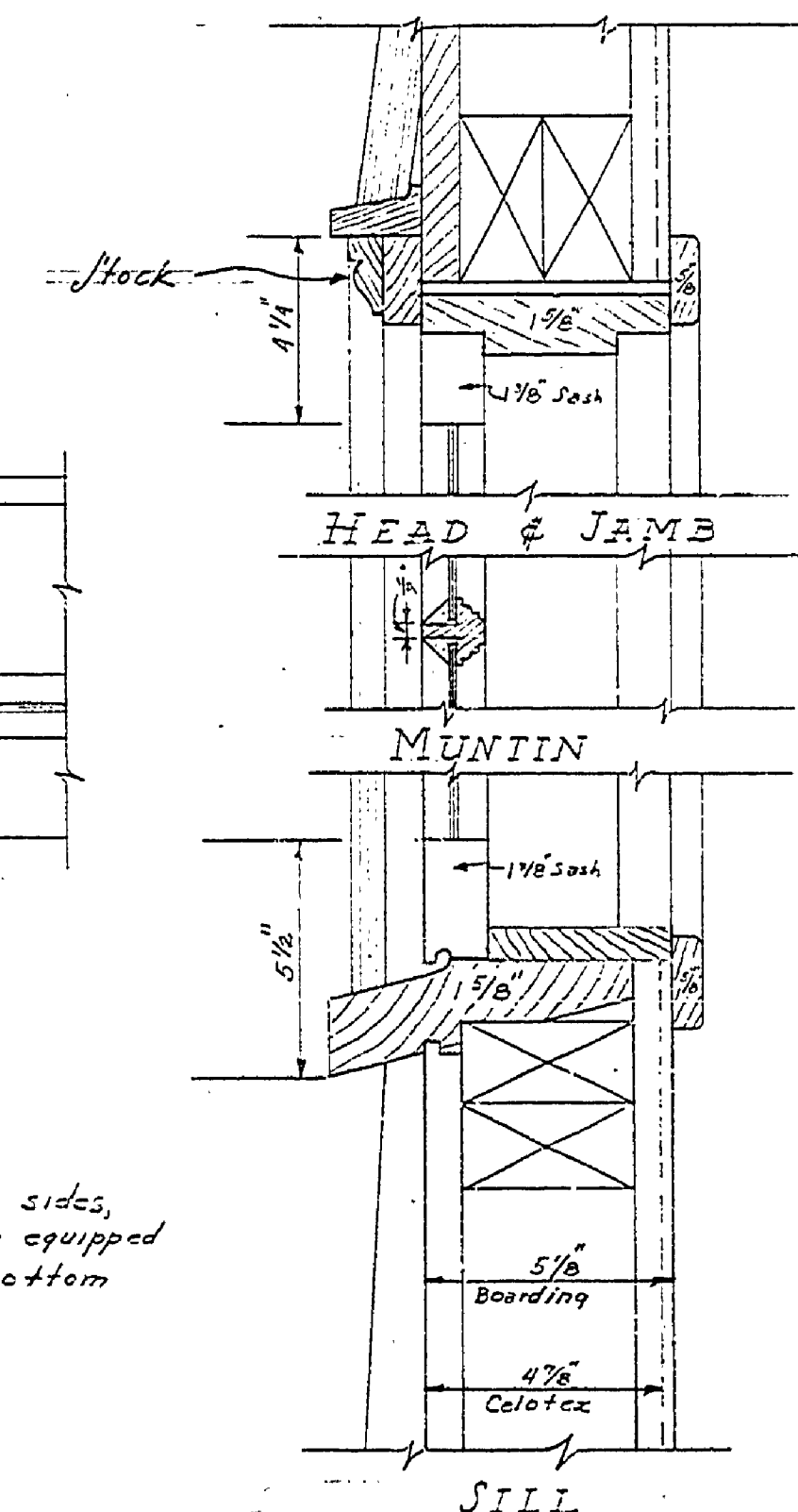


SILL



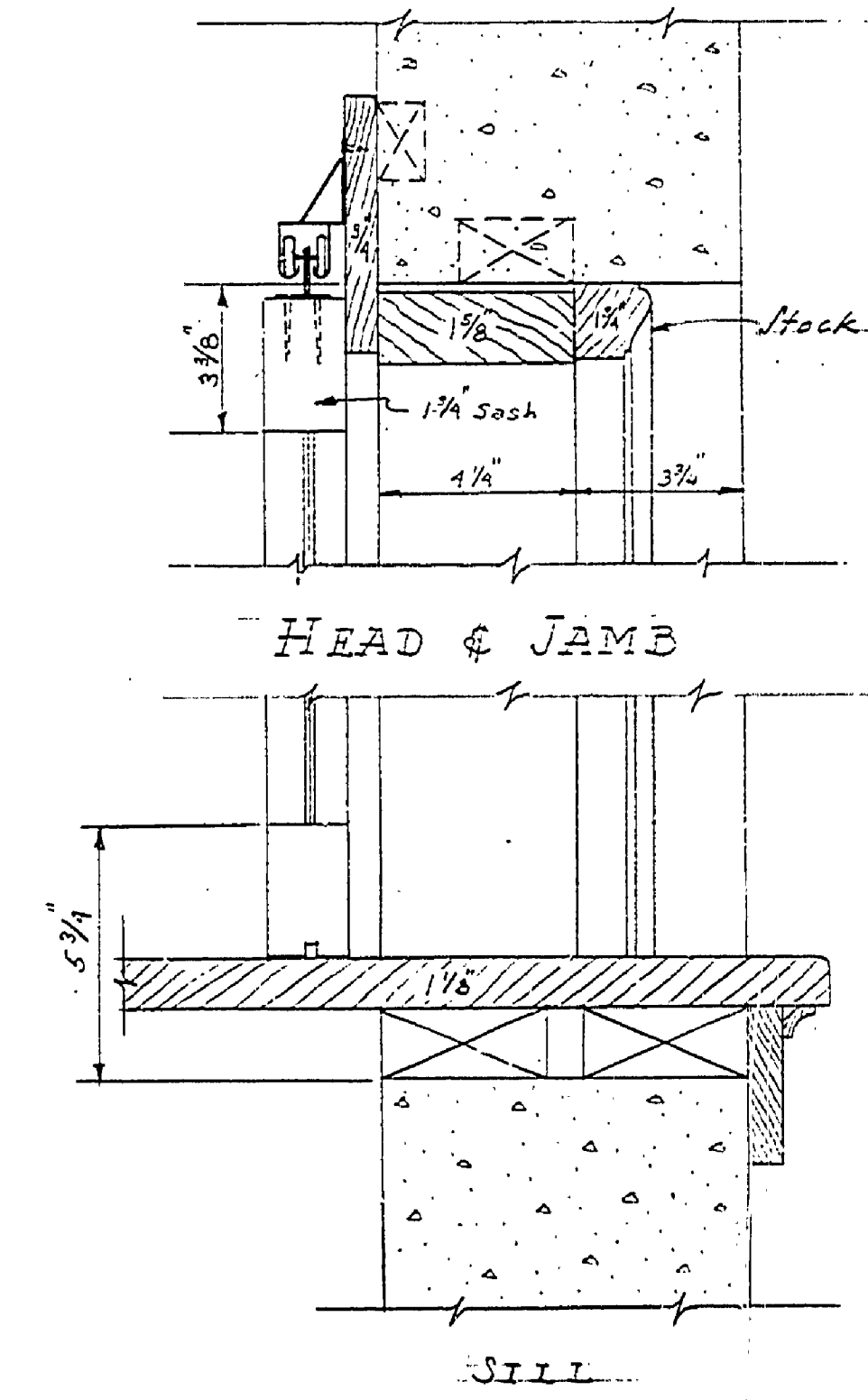
MULLION

Sash to be hinged at the sides, to swing out and to be equipped with friction stays at bottom and casement locks.



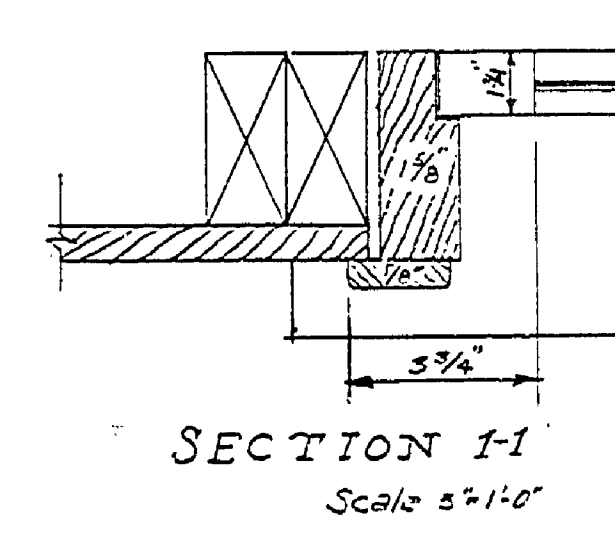
SILL

CASEMENT WINDOW DETAILS  
Scale 3/4"=1'-0"

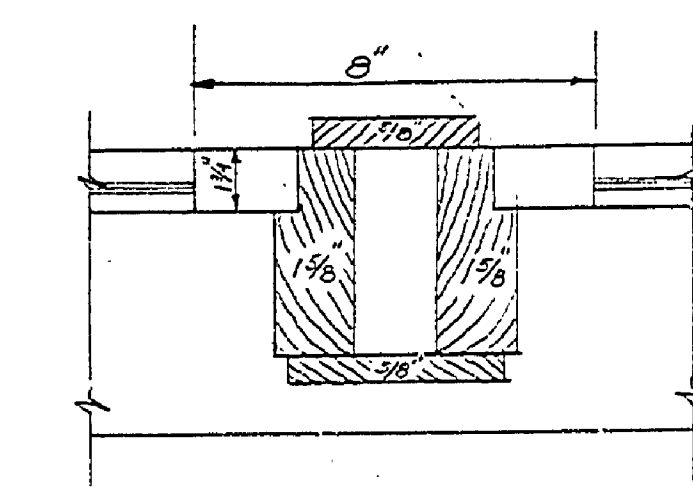


SILL

EXTERIOR CHECK ROOM WINDOW DETAILS  
Scale: 3/4"=1'-0"



SECTION 1-1  
Scale 5/8"=1'-0"



SECTION 2-2  
Scale: 3/4"=1'-0"

NOTE: For SASH MARKED "M", "N" & "P" SEE EXTERIOR DETAILS SHEET #566

BASEMENT WINDOWS DETAILS  
Scale 3/4"=1'-0"

Drawn by: A.C.M. Revisions: 12-13-33 RBH  
Checked by: LUDWIG TON  
Date: 10-26-33

A-98

SHEET 7

S-P-2-102