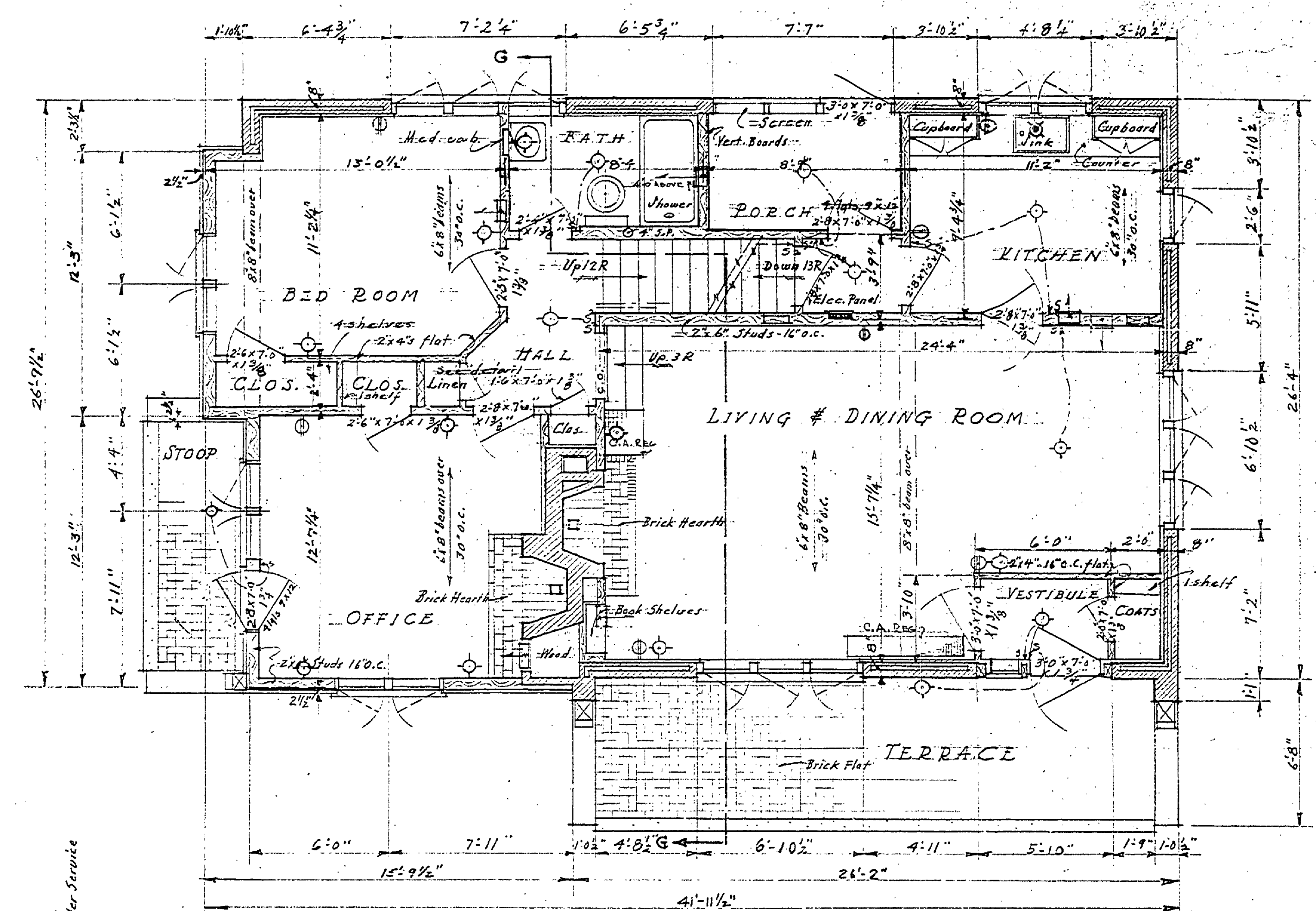
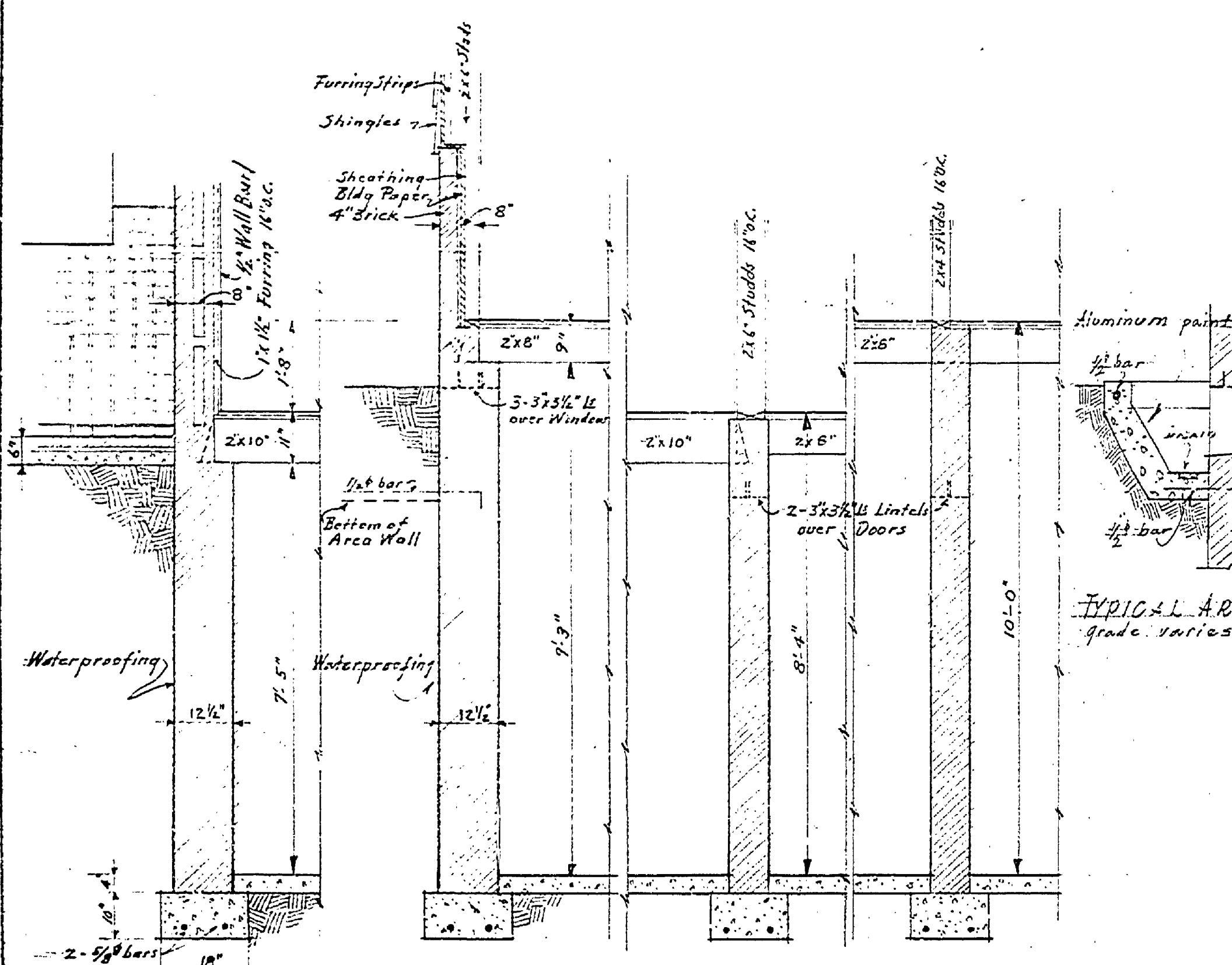


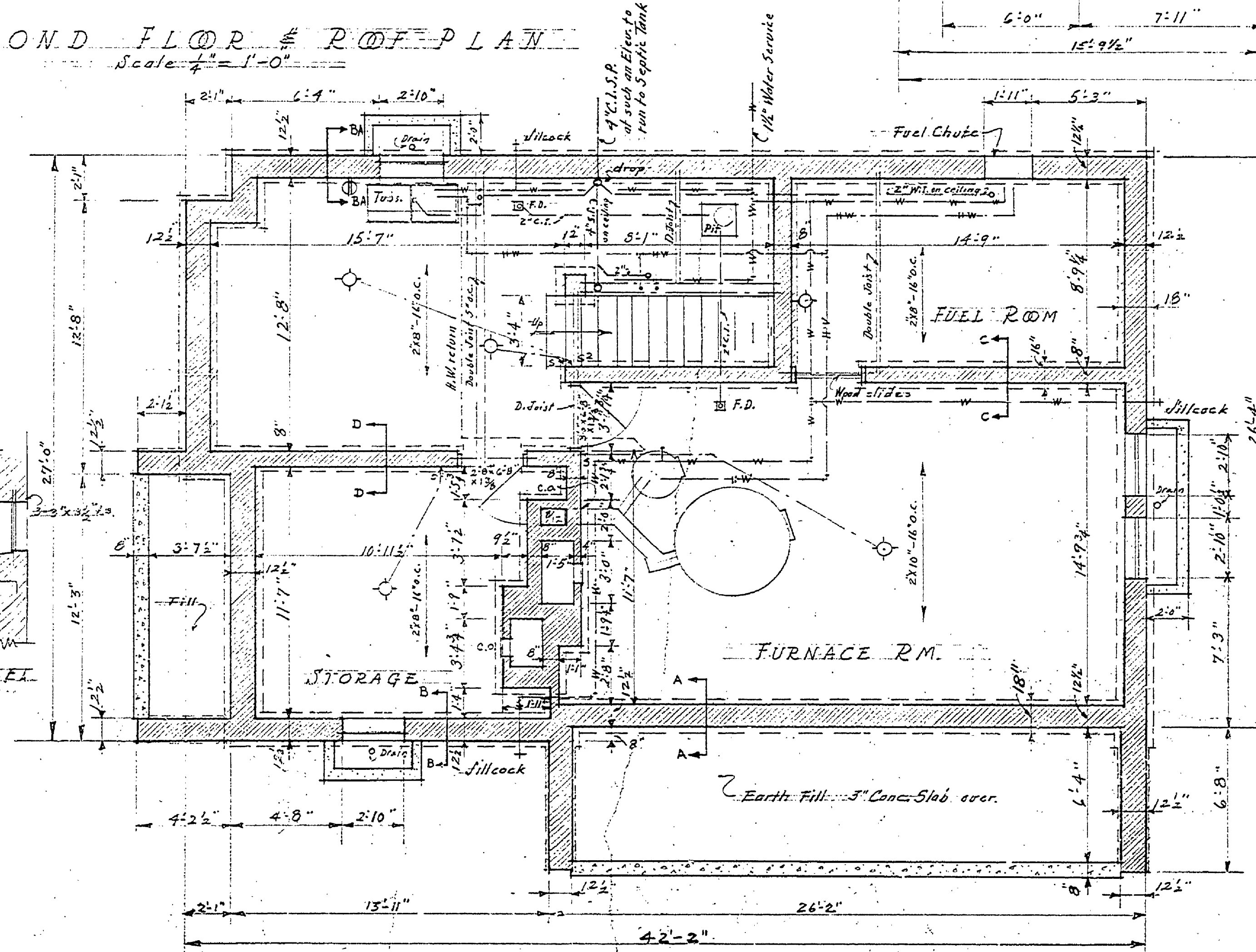
SECOND FLOOR & ROOF PLAN
Scale 1/4" = 1'-0"



FIRST FLOOR PLAN
Scale 1/4" = 1'-0"



SECTION A-A · SECTION B-B · SECTION C-C · SECTION D-D
Scale 1/2" = 1'-0"



BASEMENT & FOUNDATION PLAN
Scale 1/2" = 1'-0"

NOTES

- Dimension Lines taken from Brick to brick, from brick to center lines of Stud Partitions and from center to center of interior partitions.
- All interior walls to be 1/2" wall board, to have 2 coats of cold water paint.
- All finish to be white pine, stained with 1 coat Benite and 1 coat Ban finish.
- Kitchen and Bath to have 3 coats of mixture of Benite and paint.
- Living & Dining Rm floor 1/2" select Oak Stained 1 coat Benite and 1 coat of Benite and oil stain.
- Bath and Kitchen floor to have 1/2" linoleum.
- Bedroom Hall, Kitchen & Bath floors to be Rift sawed pine or fir.
- Exterior woodwork to be primed 1 coat Benite and 1 coat Benite and oil stain.
- All wood sash to be given 3 coats of Benite and paint on exterior.
- Shingles to be stained on job.
- All metal flashing and cond. work to have 2 coats paint.
- Brick for terrace & fireplace hearth to be carefully selected.
- Joints to be caulked with oakum and caulking compound.

U.S. DEPARTMENT OF INTERIOR		STATE OF MICHIGAN	
NATIONAL PARK SERVICE		LUDINGTON STATE PARK S.P. #2	
STATE PARK EMERGENCY CONSERVATION WORK		PROJECT: SUBT. RESIDENCE #28-B	
Date: 5-7-34		Scale: 1/4", 1/2" = 1'-0"	
R.B. Herick		Architect	
Checked by: DISTRICT INSPECTOR		PROCUREMENT OFFICER	
Date:		ALLOTMENT AVAILABLE	
Recommended for: DISTRICT OFFICE ENG.		Submitted by: SUP'T. STATE PARKS	
Date:		Approved: STATE CONS. COMM.	
Checked by: DISTRICT OFFICER		Date:	

MASTER PLAN #1