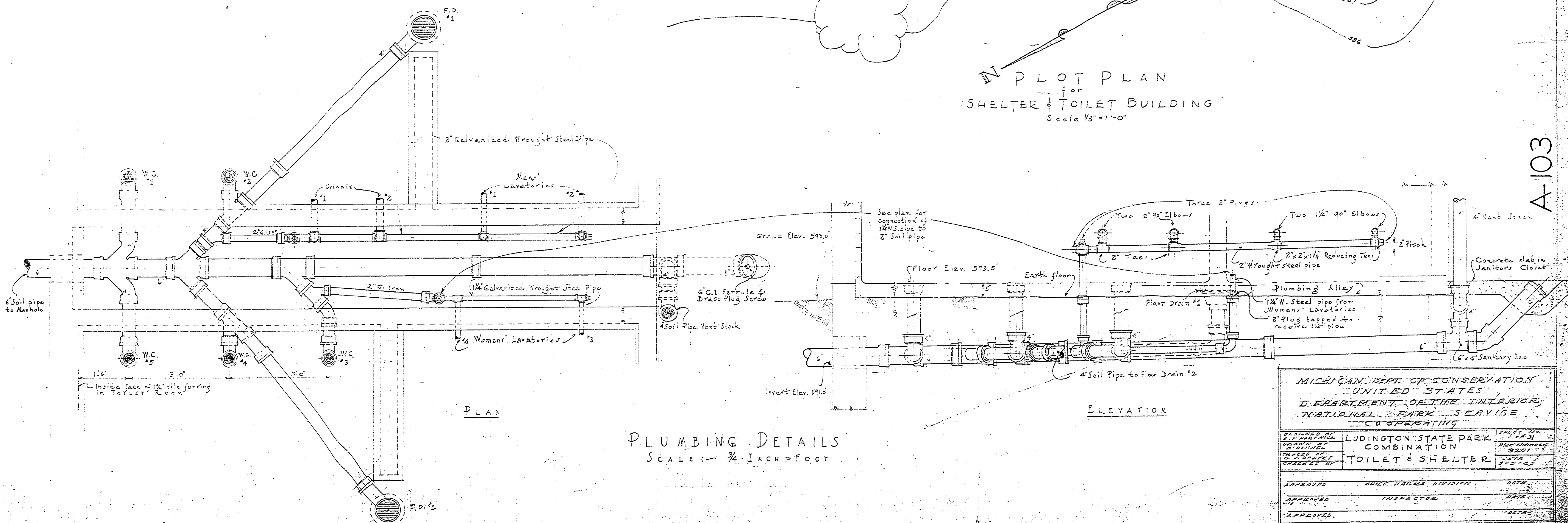
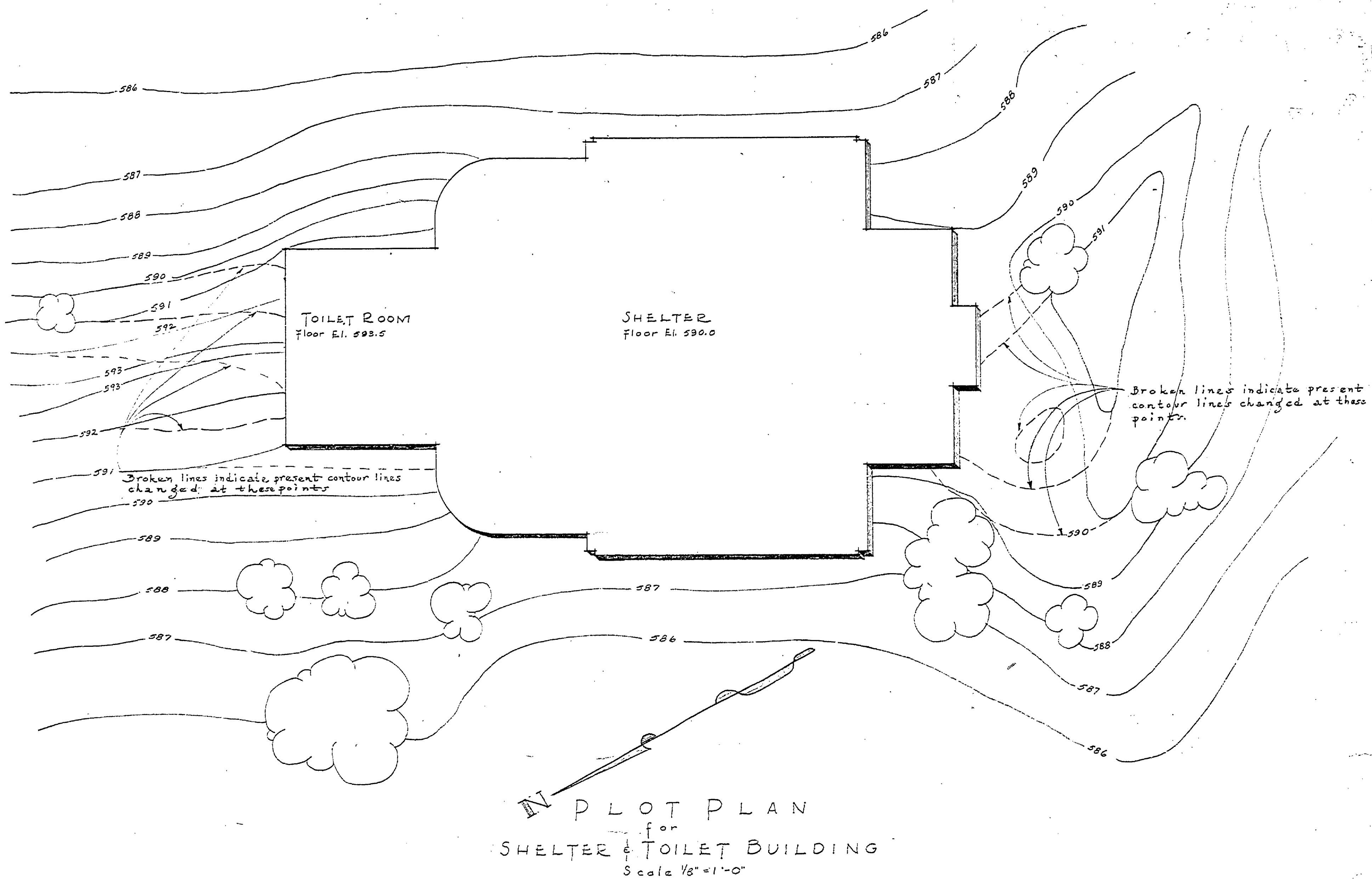
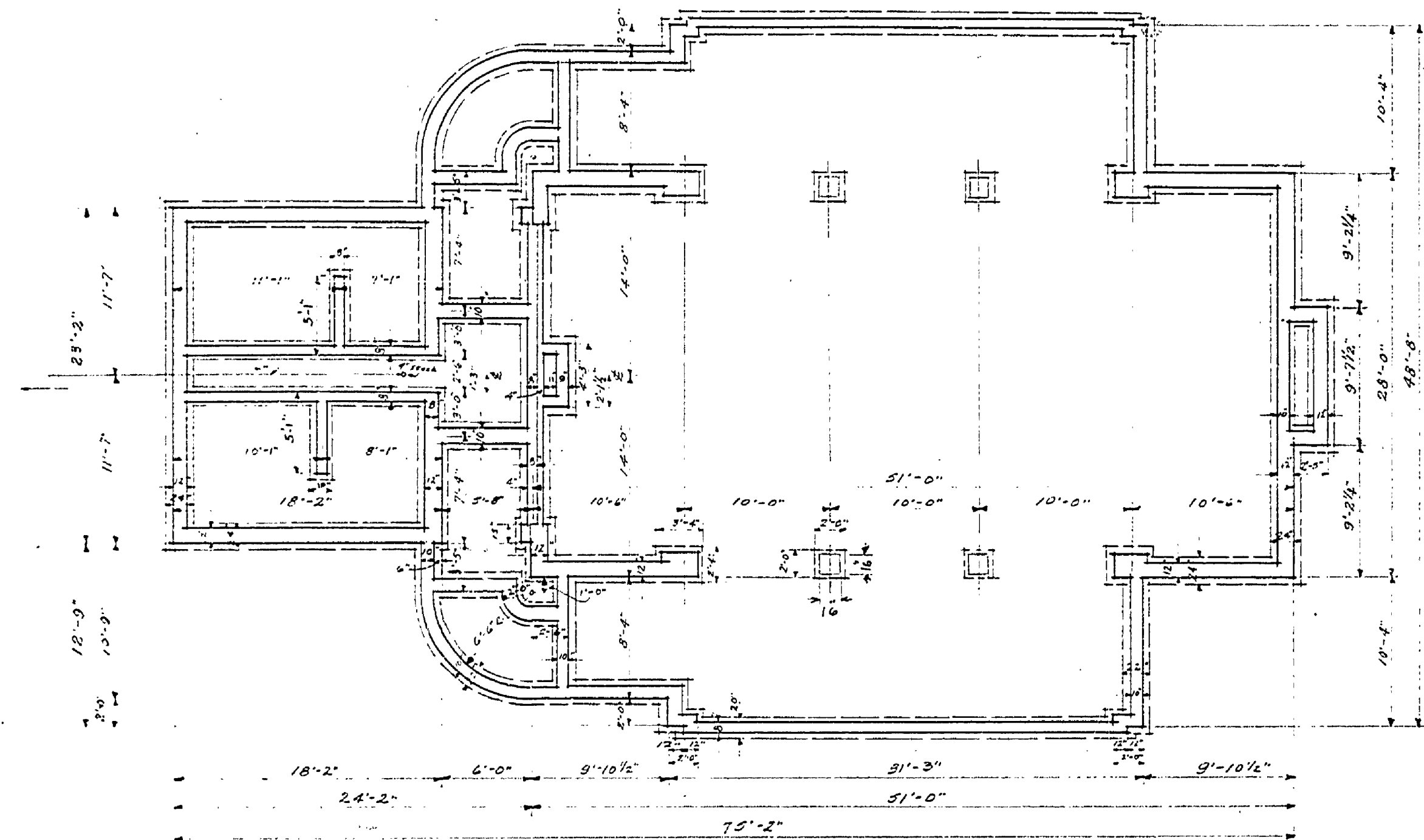


NOTE! Excavate for all footings to firm soil, at least 3/4" below finished grade line.



MICHIGAN DEPT. OF CONSERVATION UNITED STATES DEPARTMENT OF THE INTERIOR NATIONAL PARK SERVICE CO-OPERATING		
DESIGNED BY LUDINGTON STATE PARK COMBINATION	CHIEF ENGINEER LUDINGTON STATE PARK COMBINATION	DATE 1920
DRAWN BY TOILET & SHELTER	INSPECTOR	DATE
CHECKED BY	DATE	DATE

A-103

MASTER PLAN-7A