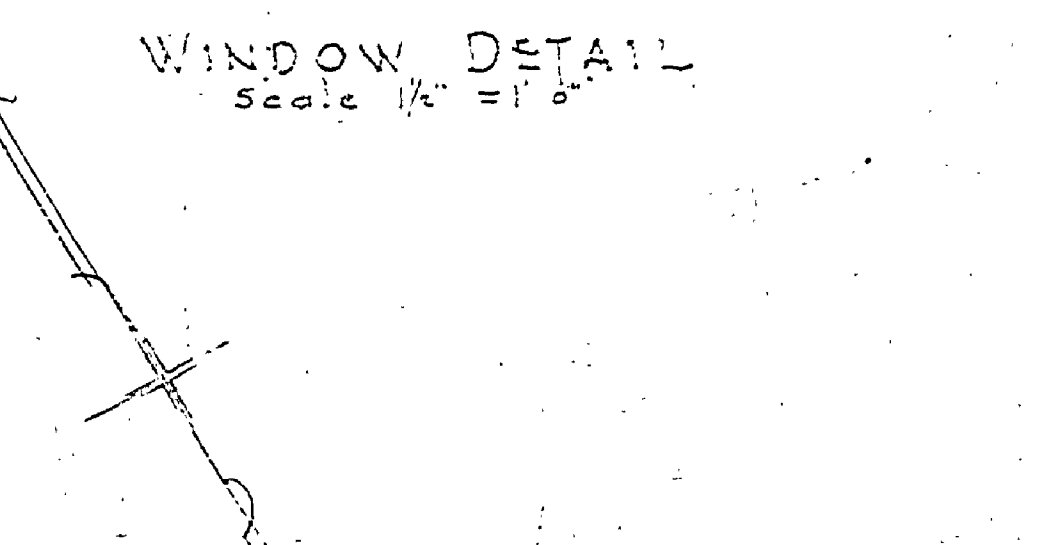
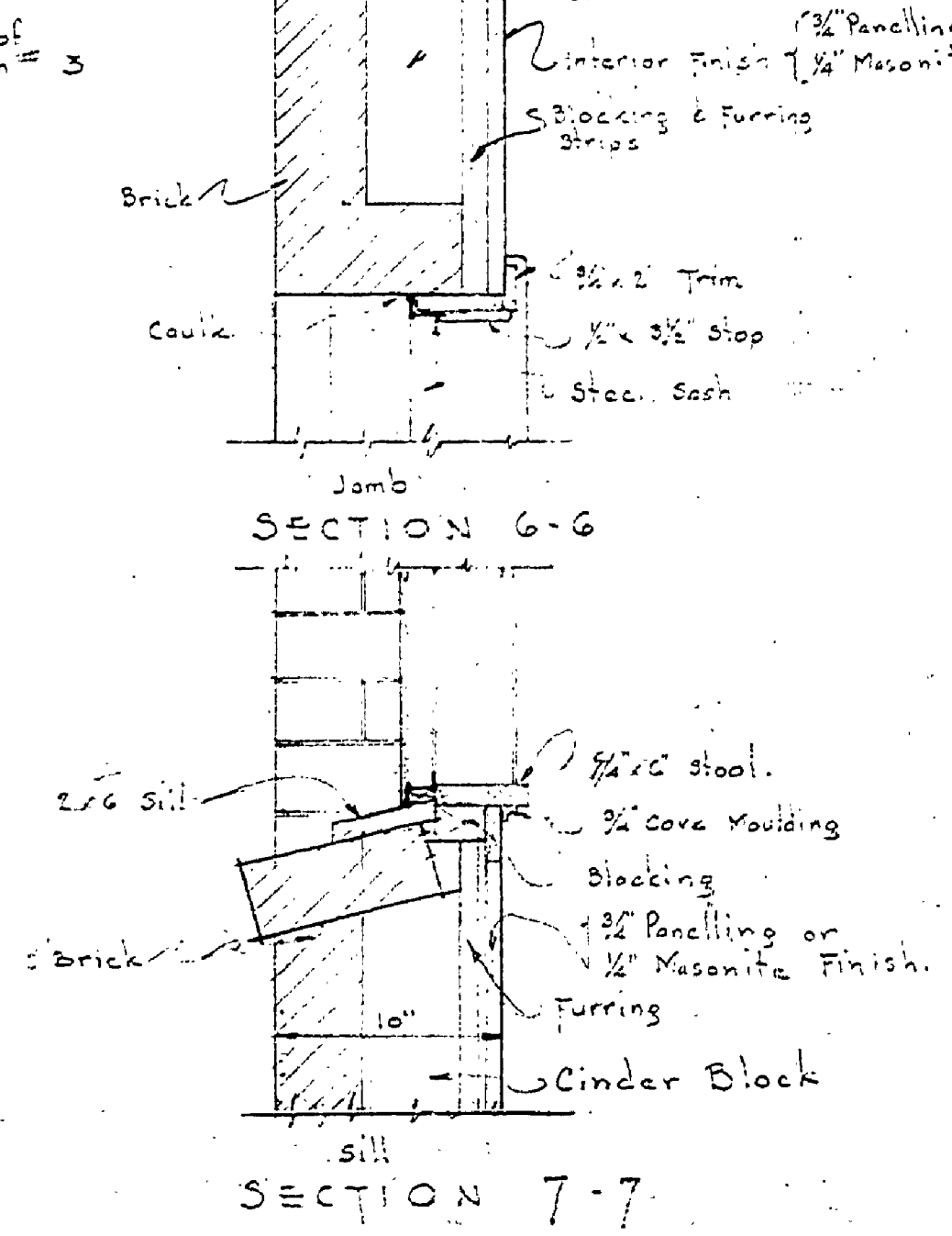
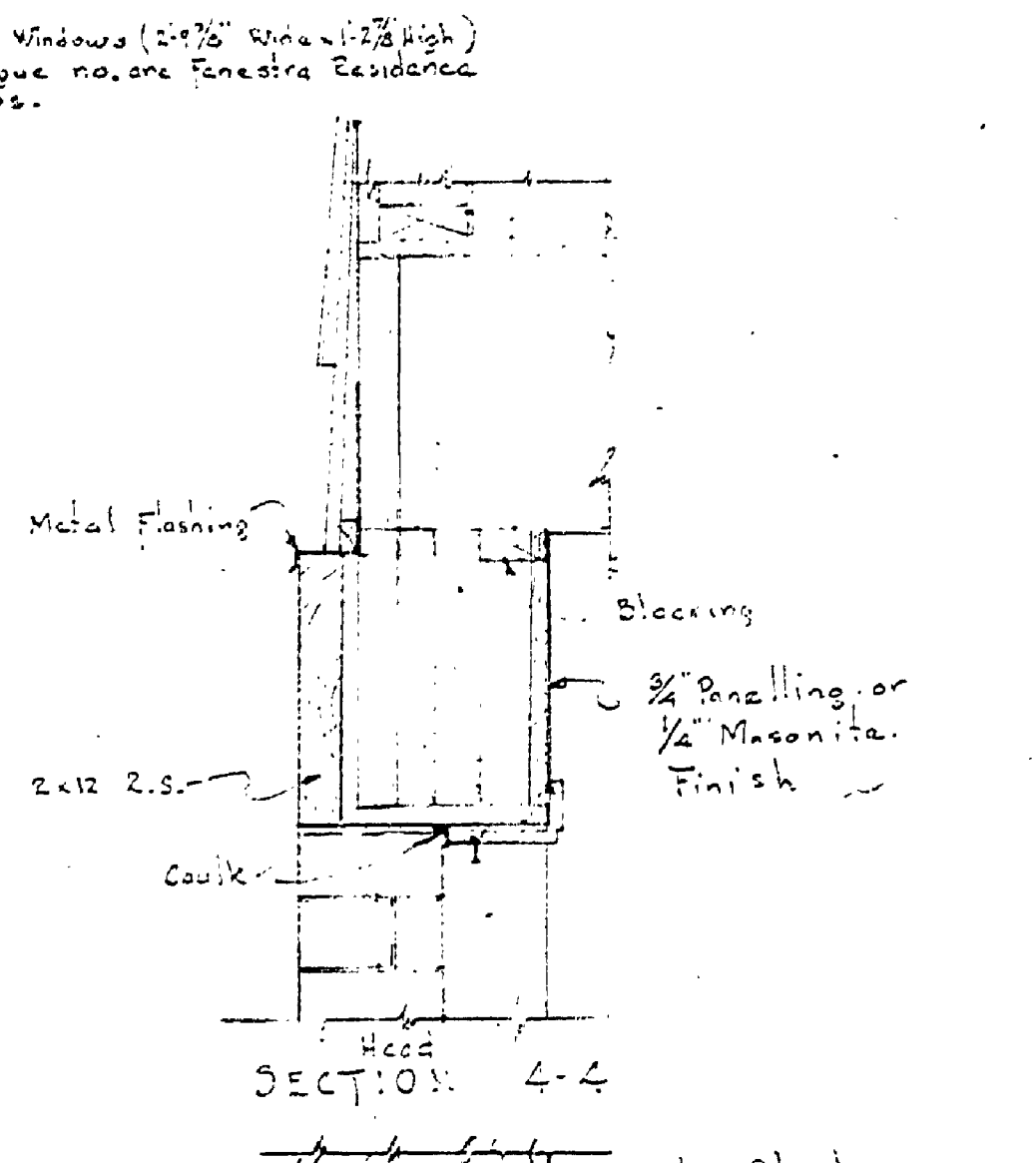
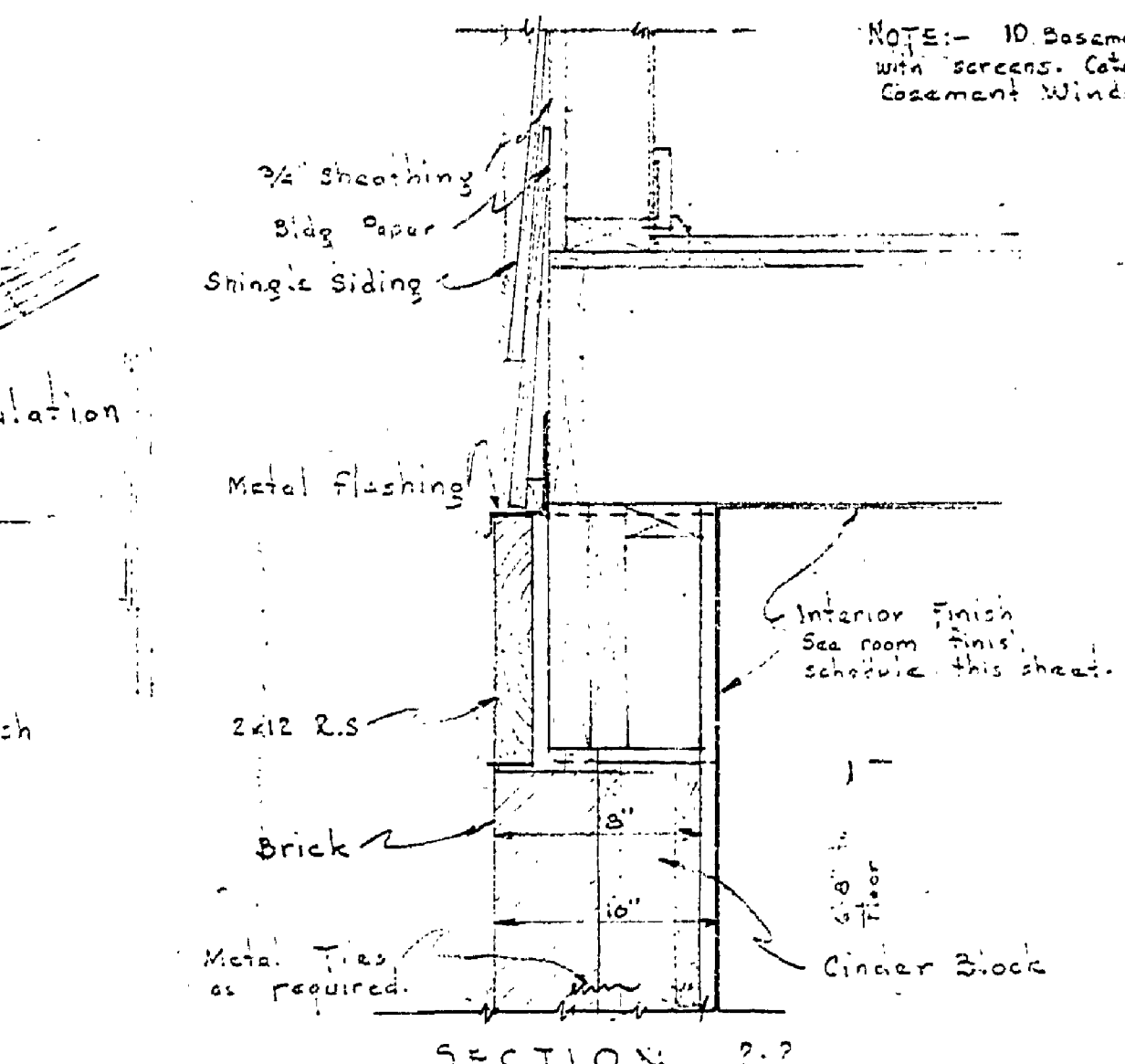
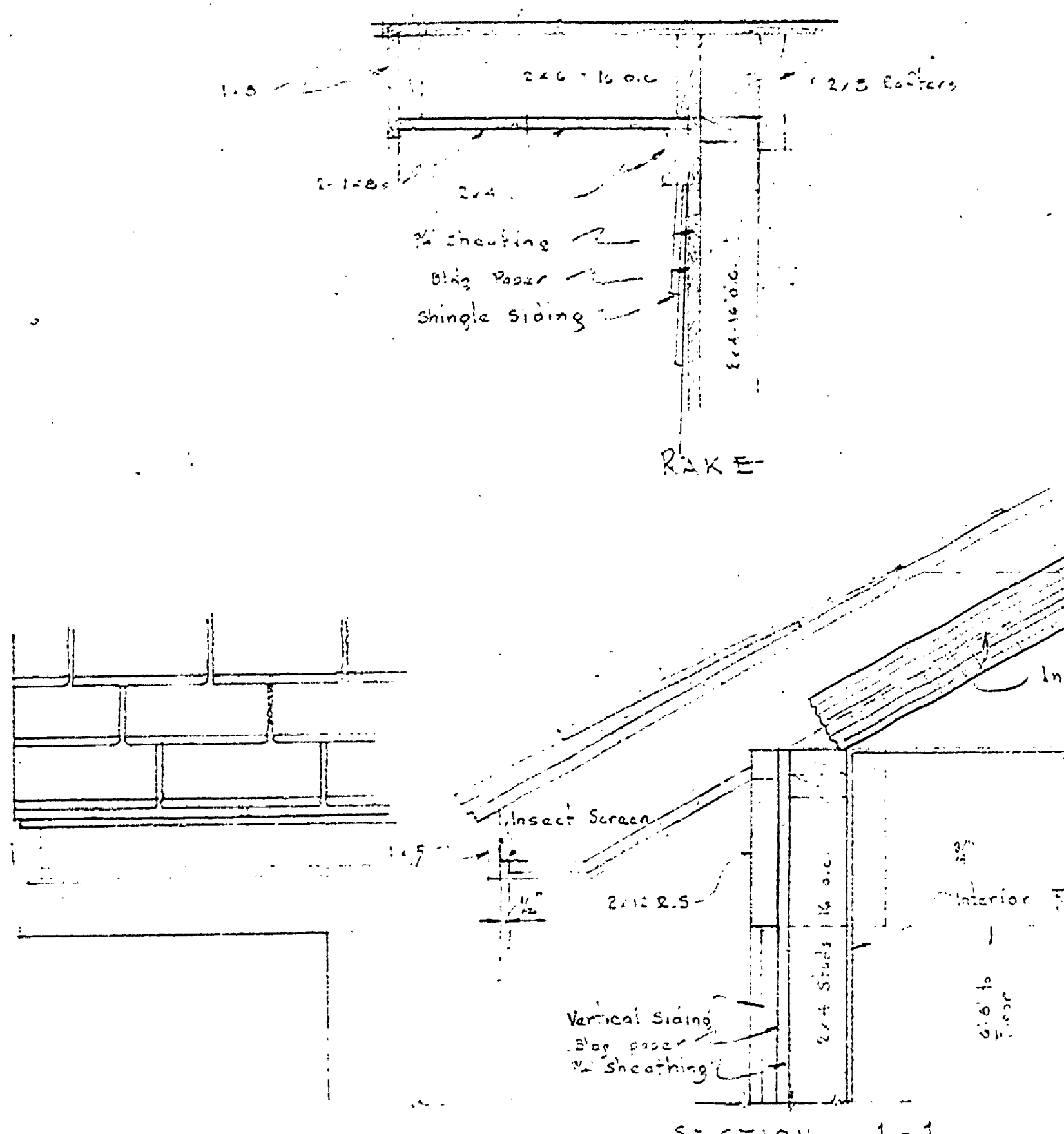


NO.	DATE	BY	REVISIONS	
			NO.	DATE
1			4	
2			5	
3			6	

APPROVED BY	DATE	REVIEWED BY SECTIONS
<i>[Signature]</i>	6.6.52	J.R. H.C.M.
ASSISTANT CHIEF IN CHARGE	DATE OF DESIGN	DATE
	10.10.52	4.4.52

DESIGNED BY	DATE
J.M.F.	4.4.52
CHECKED BY	DATE
J.M.F.	4.4.52

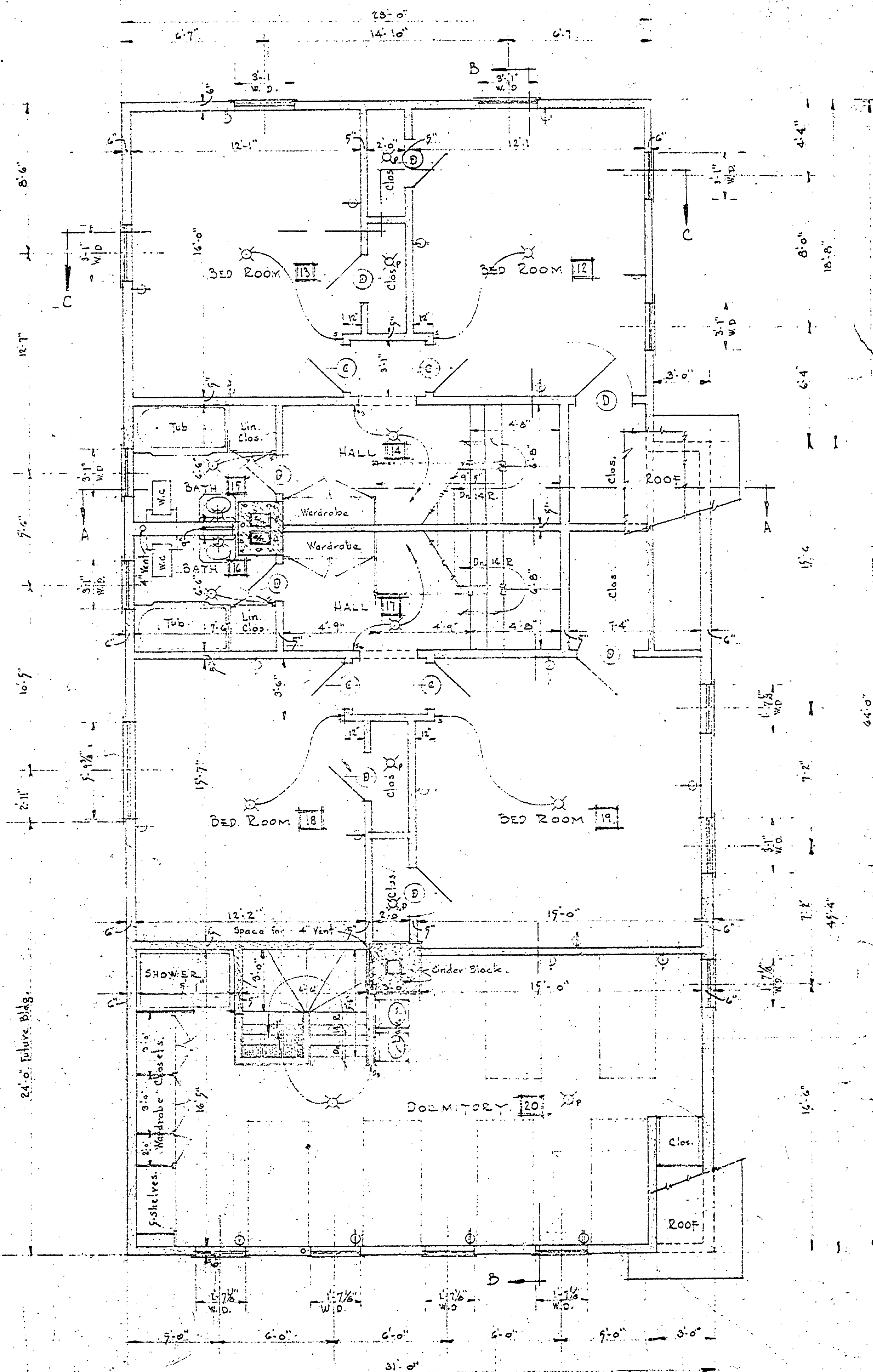
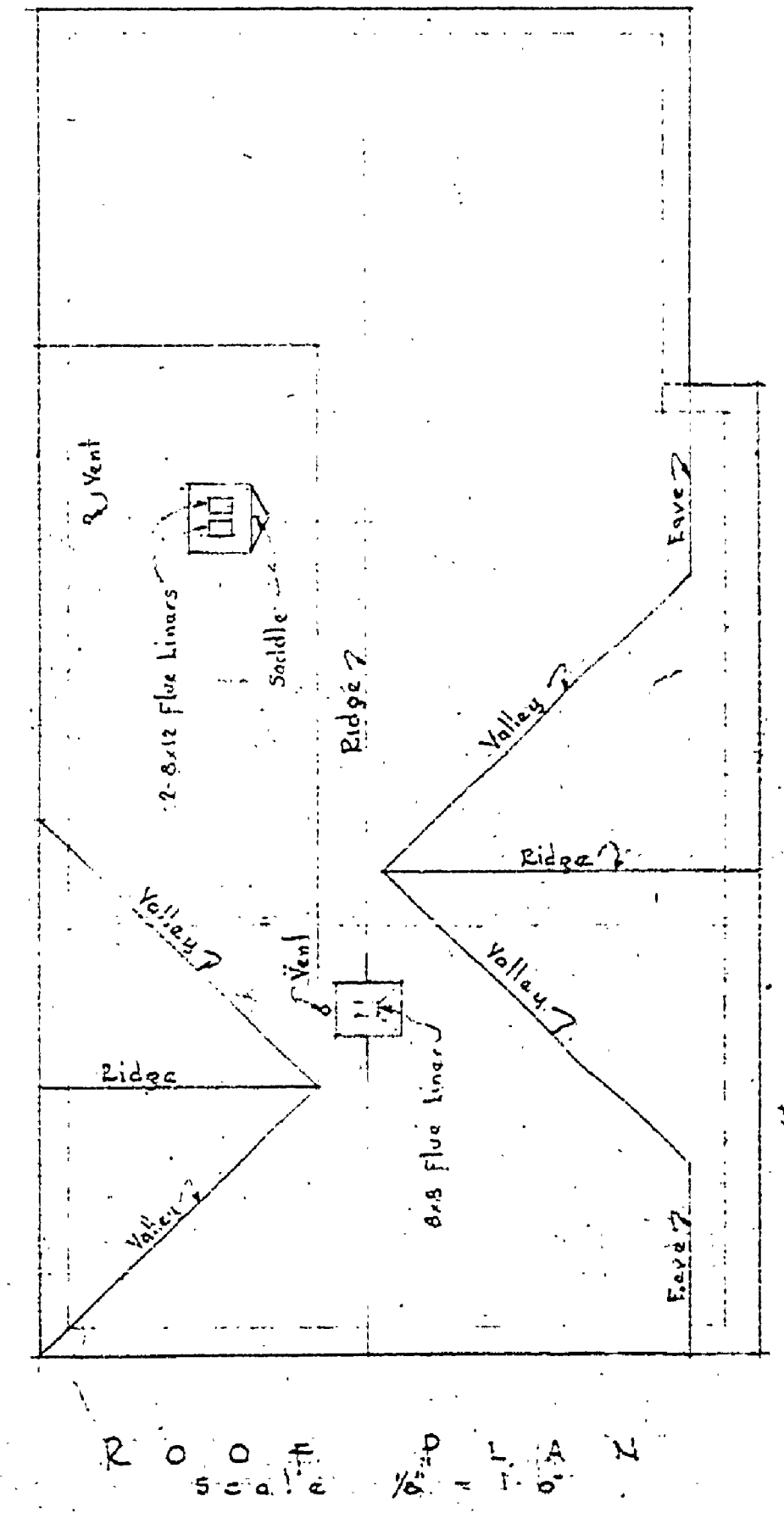
WK	QUANTITY	CATALOG NO.	WIDTH	HEIGHT	VENT	FIXED	MULLION	SCREENS	REMARKS
A	3	1413	11-11 1/2"	4'-4 3/8"	✓	✓	2-T-bar lead	✓	Spec. mullions in center window to be removed at the top and one large glass installed.
B	3	1413	11-11 1/2"	4'-4 3/8"	✓	✓	None	✓	
C	3	1413	11-11 1/2"	4'-4 3/8"	✓	✓		✓	
D	3	1413	11-11 1/2"	4'-4 3/8"	✓	✓		✓	
E	3	2222	3'-1"	2'-2"	✓	✓		✓	
F	3	2323	3'-1"	3'-2 3/8"	✓	✓		✓	
G	3	4223	3'-4 3/8"	3'-2 3/8"	✓	✓		✓	
H	3	3323	4'-5 3/8"	3'-2 3/8"	✓	✓		✓	



NOTE: - 10 Basement Windows (2'-7 1/2" x 4'-2 3/8" high) with screens. Catalogue no. one Fenestra Resistant Basement Windows.

NOTE: - For location of sections see sh # 3

ROOM NO.	ROOM FINISHING SCHEDULE									
	FLOOR	BASE	WAINSCOT	WALLS	CEILING	FINISH OF WOOD WORK	PAINTED	PAINTED	PAINTED	PAINTED
1 Living Room	✓	✓	✓	✓	✓	✓	✓	✓	✓	✓
2 Kitchen	✓	✓	✓	✓	✓	✓	✓	✓	✓	✓
3 Hall	✓	✓	✓	✓	✓	✓	✓	✓	✓	✓
4 Toilet	✓	✓	✓	✓	✓	✓	✓	✓	✓	✓
5 Bath	✓	✓	✓	✓	✓	✓	✓	✓	✓	✓
6 Living Room	✓	✓	✓	✓	✓	✓	✓	✓	✓	✓
7 Kitchen	✓	✓	✓	✓	✓	✓	✓	✓	✓	✓
8 Living Room	✓	✓	✓	✓	✓	✓	✓	✓	✓	✓
9 Hall	✓	✓	✓	✓	✓	✓	✓	✓	✓	✓
10 Toilet	✓	✓	✓	✓	✓	✓	✓	✓	✓	✓
11 Kitchen	✓	✓	✓	✓	✓	✓	✓	✓	✓	✓
12 Bed Room	✓	✓	✓	✓	✓	✓	✓	✓	✓	✓
13 Bed Room	✓	✓	✓	✓	✓	✓	✓	✓	✓	✓
14 Hall	✓	✓	✓	✓	✓	✓	✓	✓	✓	✓
15 Bath Room	✓	✓	✓	✓	✓	✓	✓	✓	✓	✓
16 Bath Room	✓	✓	✓	✓	✓	✓	✓	✓	✓	✓
17 Hall	✓	✓	✓	✓	✓	✓	✓	✓	✓	✓
18 Bed Room	✓	✓	✓	✓	✓	✓	✓	✓	✓	✓
19 Bed Room	✓	✓	✓	✓	✓	✓	✓	✓	✓	✓
20 Dormitory	✓	✓	✓	✓	✓	✓	✓	✓	✓	✓
Stair Landing	✓	✓	✓	✓	✓	✓	✓	✓	✓	✓
Closets	✓	✓	✓	✓	✓	✓	✓	✓	✓	✓



NOTE: Interior finish: Woodwork of halls, stairways, living rooms and dinette to be stained & sealed with white 'Frazita' wood oil sealer. Apply two (2) coats of 'Satinlac' over 'Frazita' stain and sealer. The products 'Frazita' and 'Satinlac' are distributed by the U.S. Plywood Corp.

NOTE: Exterior finish: All exterior wood work to be stained two (2) coats light Brown Woodlife.

NOTE: Floor tile coloring for rooms are Clay Brown Marble (C-356) all Halls and Dormitory; White Gold on Bed Rooms (C-324) for all Bed Rooms; Black on Living Room similar to (C-356) Bath Rooms and Toilet; 2x6 Gold on Ivory similar to (C-322) for Kitchens. (Numbers used are for Armstrong's Standard Asphalt Tile.)