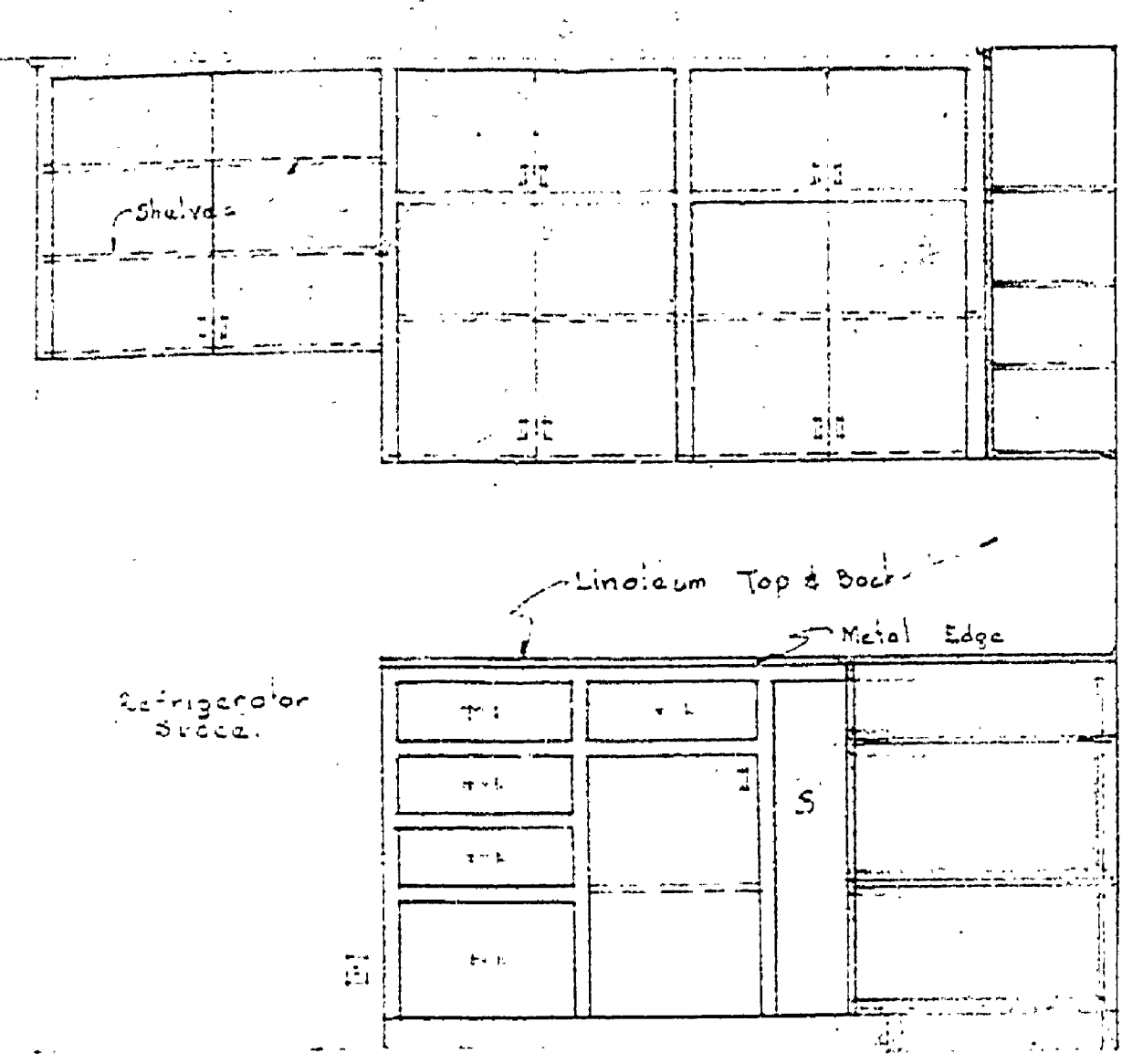
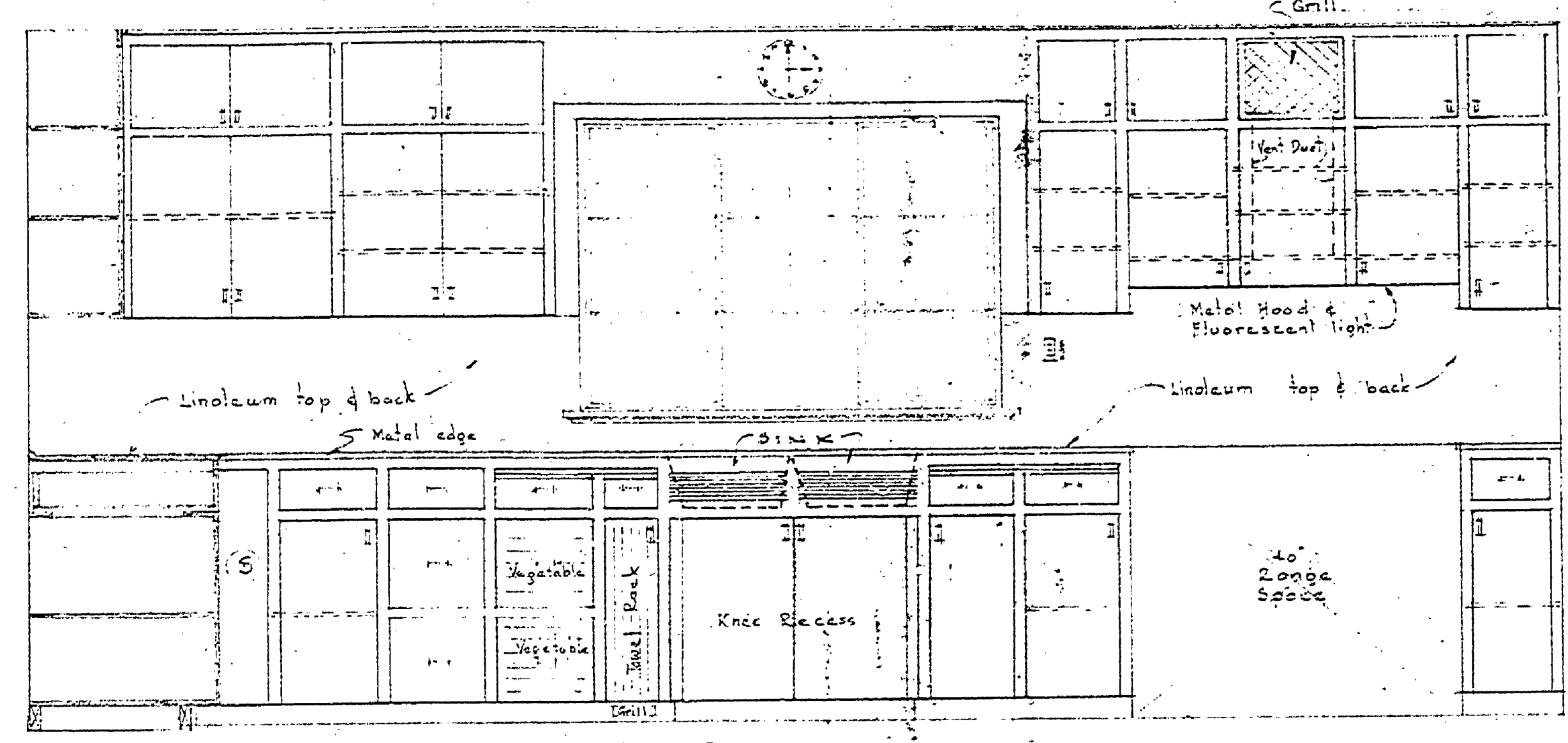


DESIGNED BY: J.M. D. GLENNWOOD	REVIEWED BY SECTIONS:	DATE:	APPROVED BY:	NO.	DATE	REVISIONS	DATE	BY
TRACED BY: J.V.F. 4-15-52	J.P.R. 6-6-52	6-6-52	<i>[Signature]</i>	1		4		
CHECKED BY: G.G. 6-6-52	H.C.M. 10/10/52	10/10/52	ASSISTANT CHIEF IN CHARGE	2		5		
DATE:	J.P.R. 6-6-52	6-6-52	OF DESIGN	3		6		
	J.P.R.							

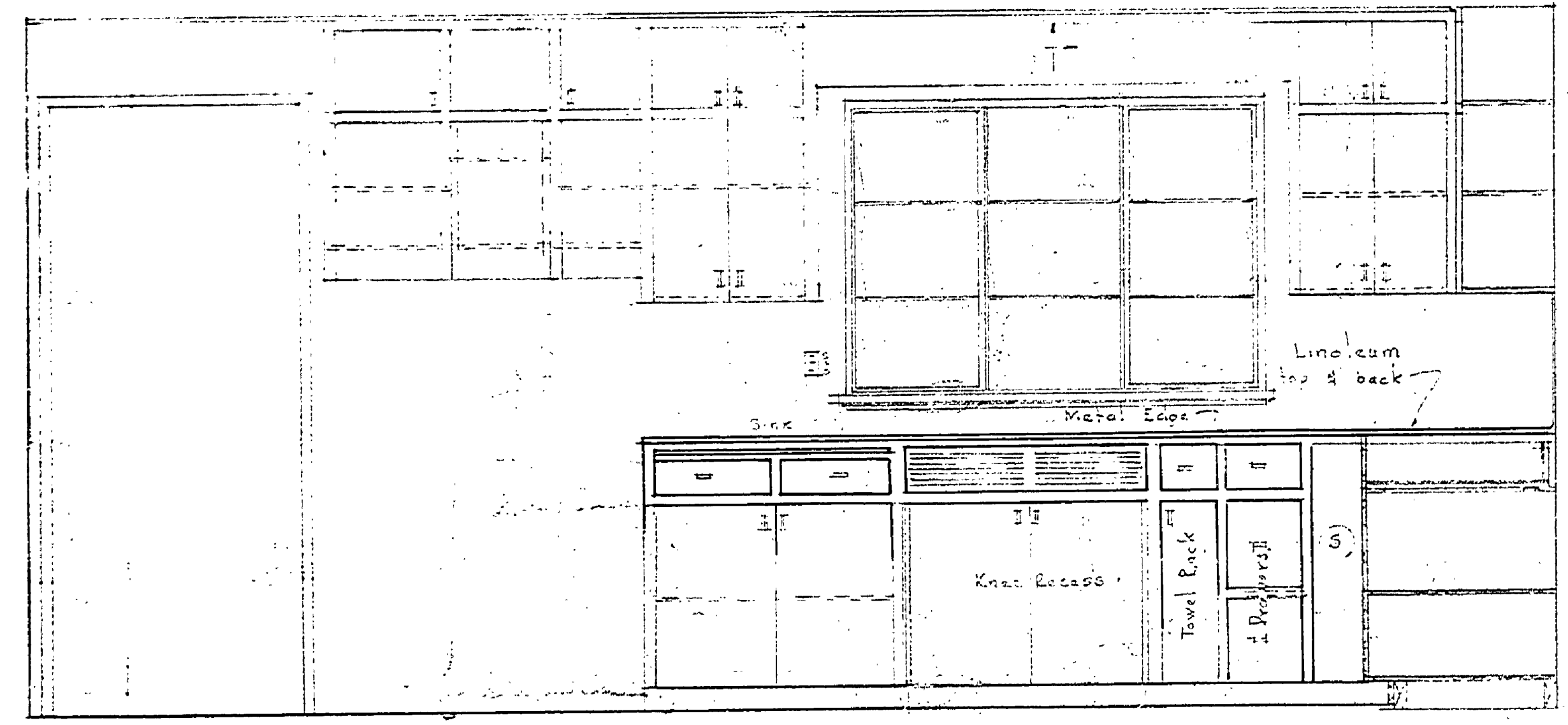


NORTH WALL ELEVATION

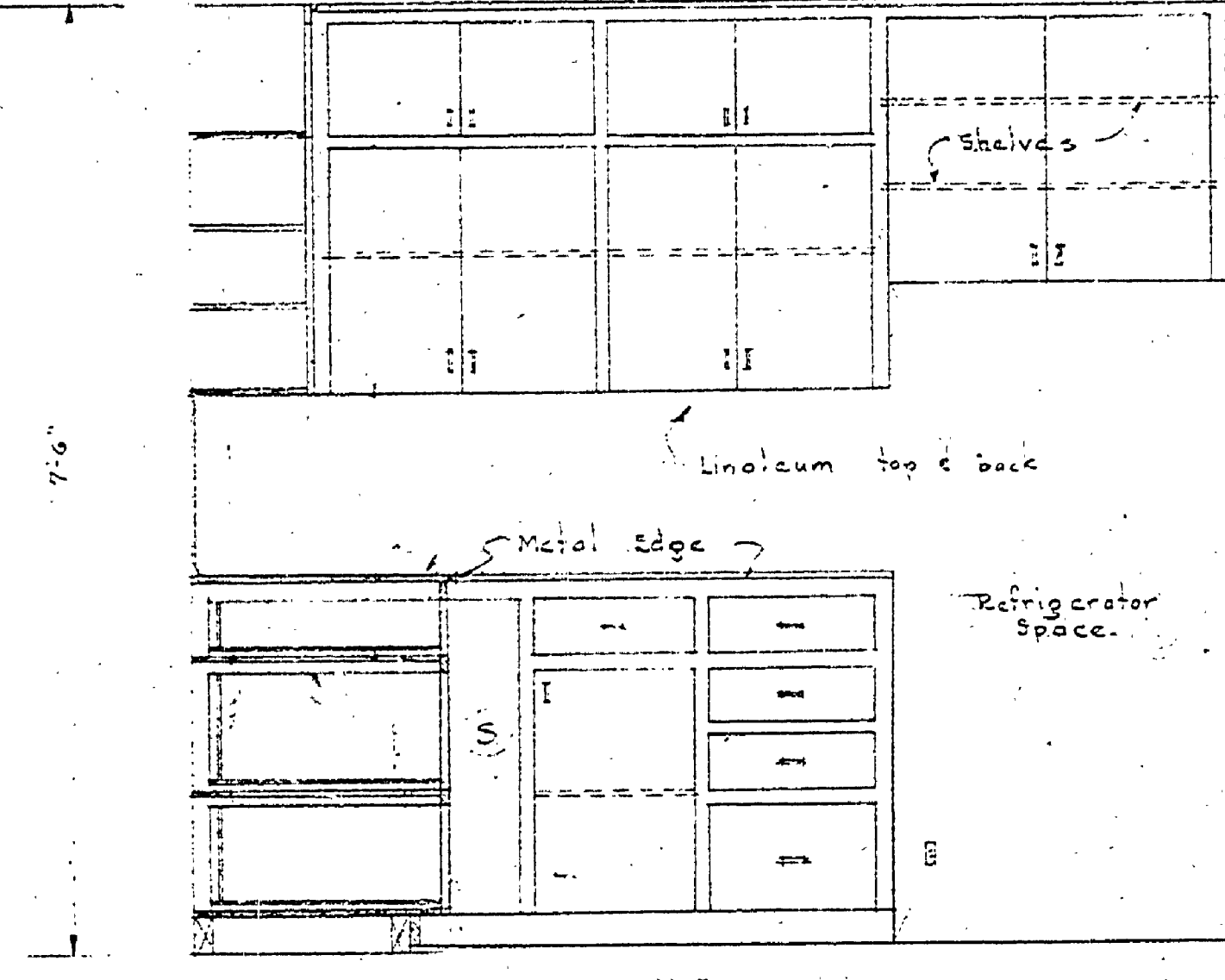


EAST WALL ELEVATION

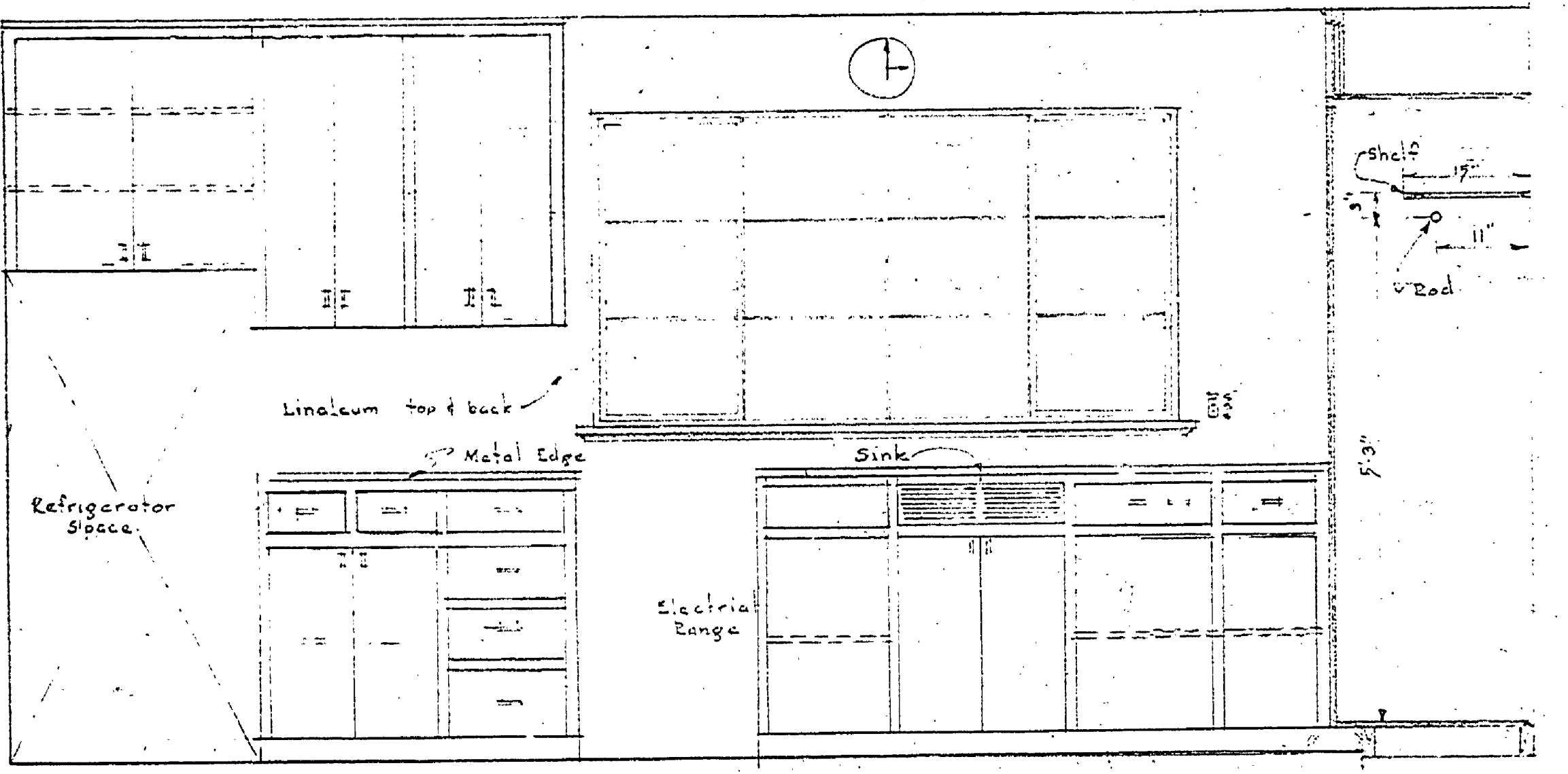
KITCHEN #2 DETAIL
Scale 3/4" = 1'-0"



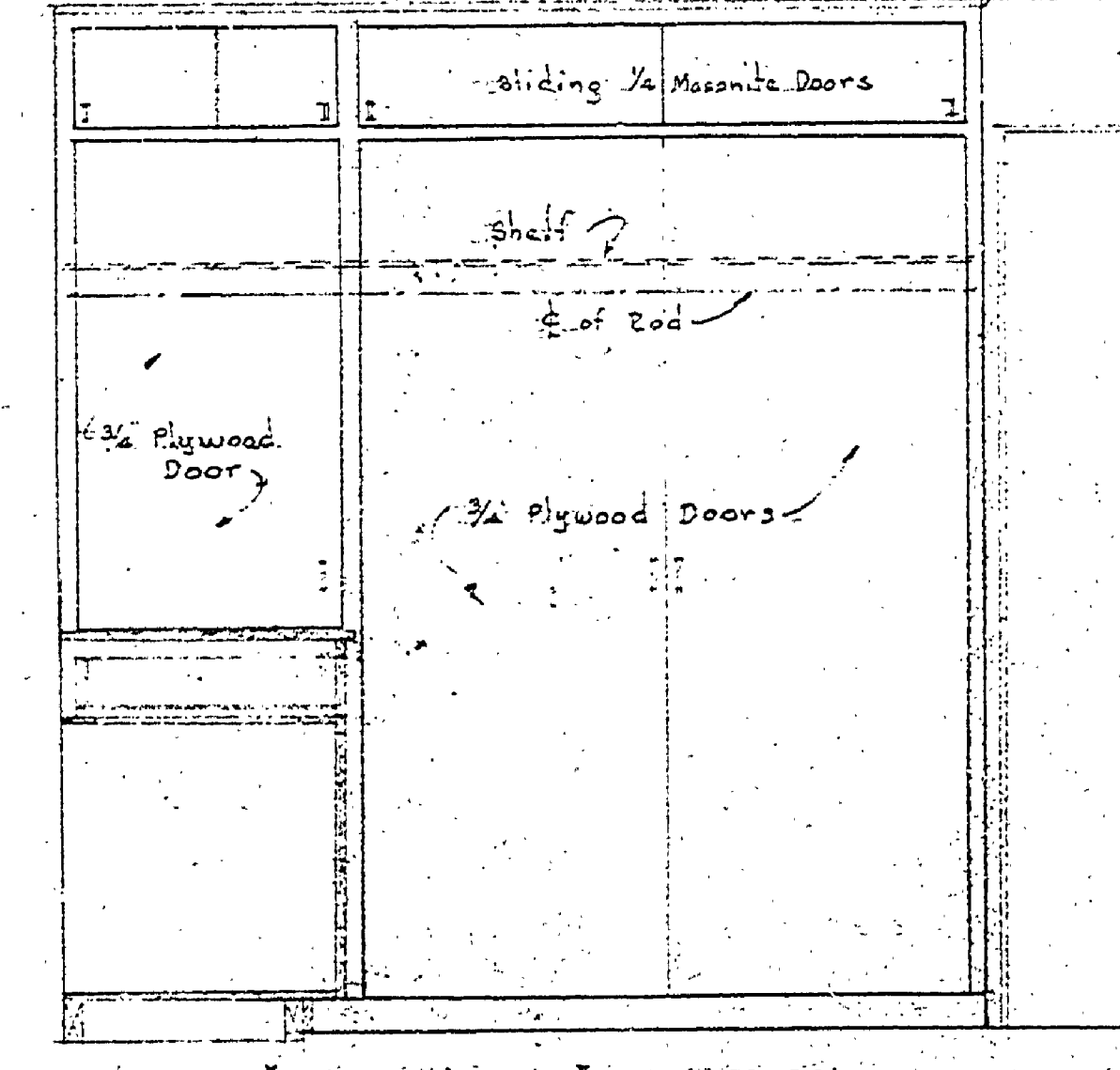
EAST WALL ELEVATION
KITCHEN #1 DETAIL
Scale 3/4" = 1'-0"



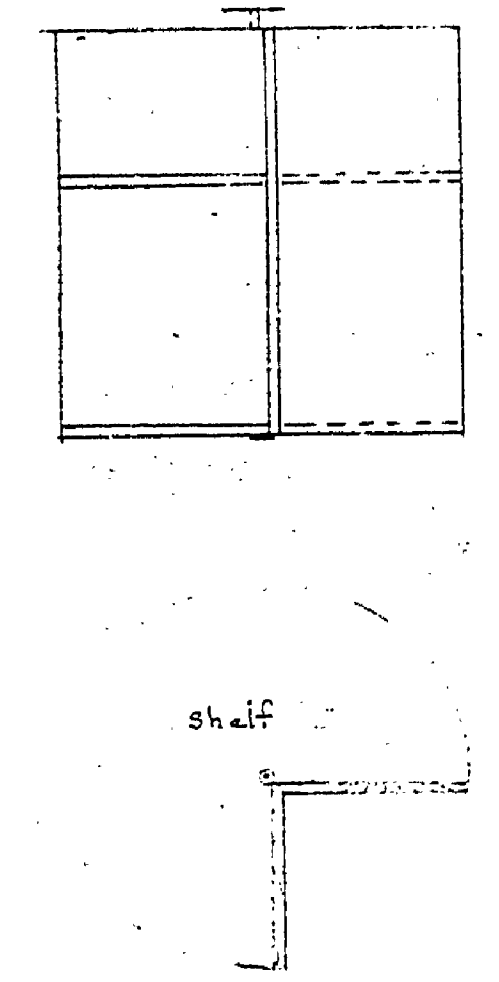
SOUTH WALL ELEVATION



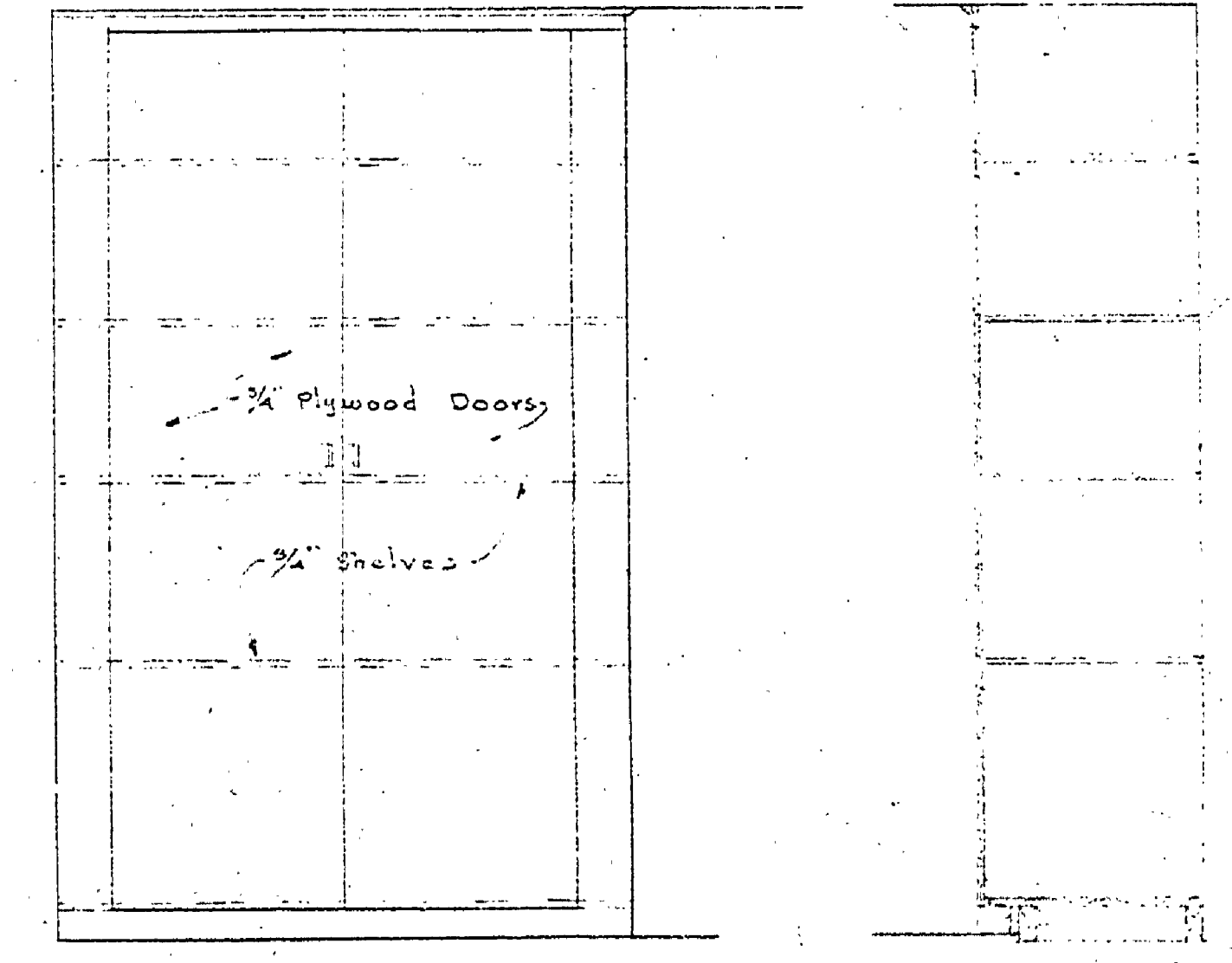
NORTH WALL ELEVATION
KITCHEN #1 DETAIL
Scale 3/4" = 1'-0"



EAST WALL ELEVATION



DETAIL S
REVOLVING SHELVING
Scale 1" = 1'-0"



ELEVATION SECTION
SECOND FLOOR WARDROBE HALLS
Scale 3/4" = 1'-0"

NOTE: Cabinets to have 3/4" plywood lipped doors. Drawer faces to be similar.