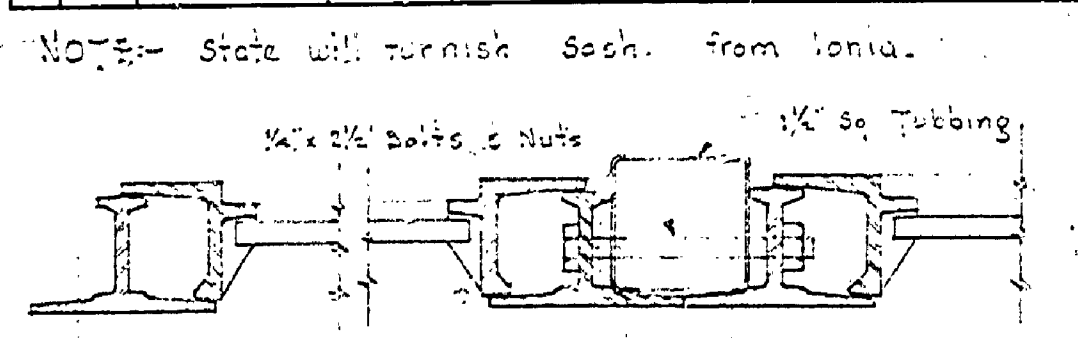
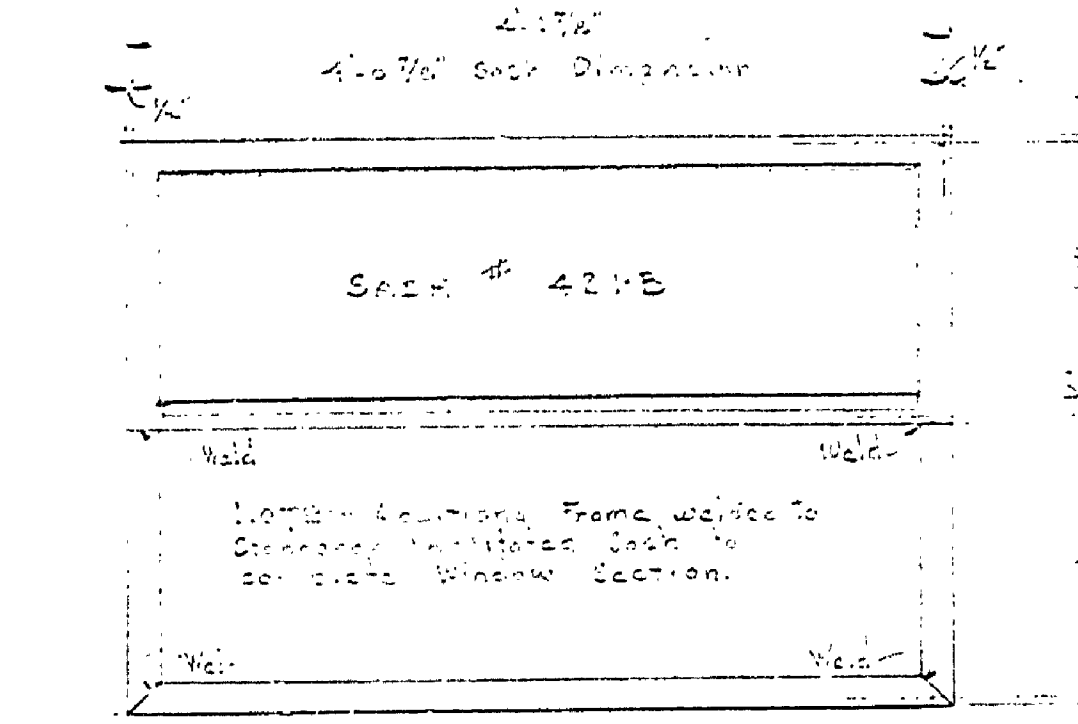


NO.	DATE	BY	REVISIONS		
			NO.	DATE	BY
1			4		
2			5		
3			6		

WINDOW SCHEDULE									
NO.	UNIT AND QTY	WIDTH	HEIGHT	NOTE	FIXED	VERT. MULLION	REMARKS		
A	4 - 2 Assemblies	12'-0"	2'-11"	✓	✓	2"	358, Sash #421B	Obscure Glass	
B	2 - 2 Assemblies	6'-0"	2'-11"	✓	✓	1"	258, Sash #421B	Obscure Glass	
C	2 - 1 Assembly	4'-0"	2'-11"	✓	✓	None	188, Sash #421B	Obscure Glass	



JAMBS
MULLION

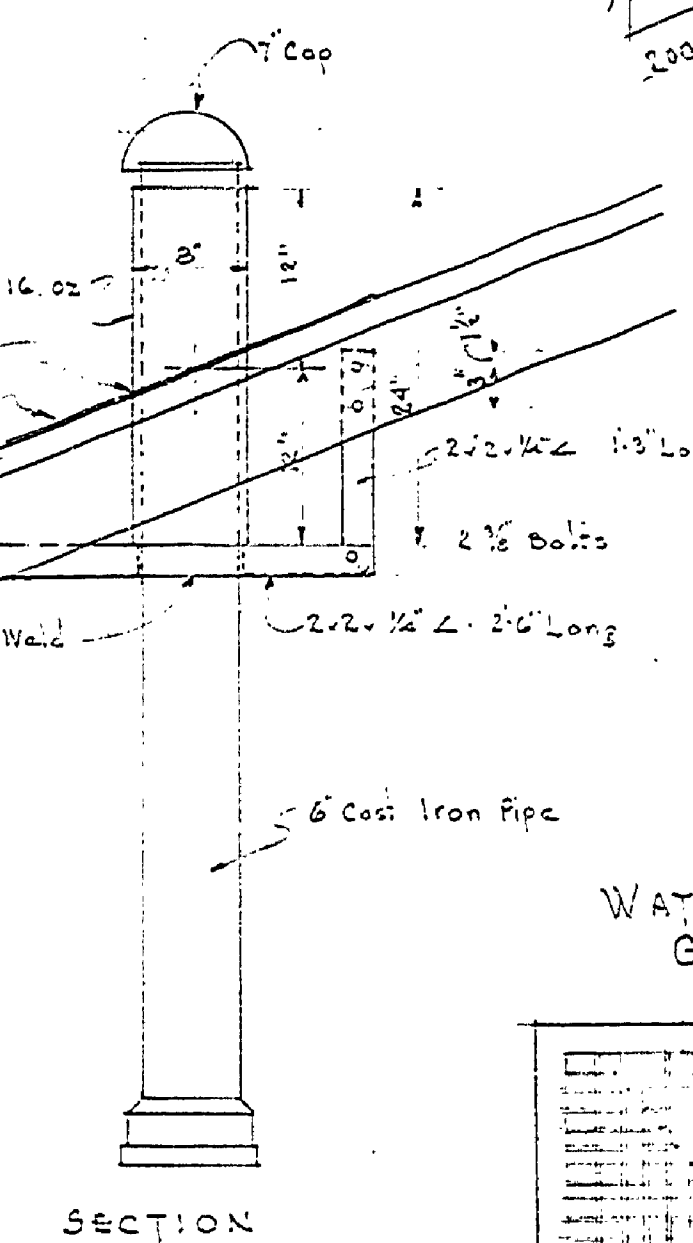


ASSEMBLY

NOTE: - State will furnish Sash. from Ionia.

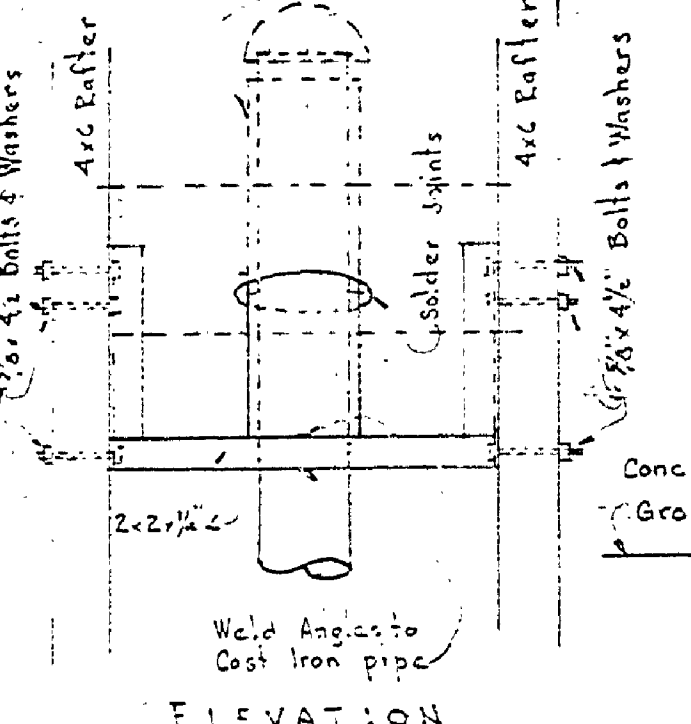
NOTE: - Aluminum reflector with solid ends - 1/4" material (formed in sheet metal shop)

REFLECTOR FOR MIRROR FLUORESCENT LIGHT HALF FULL SIZE

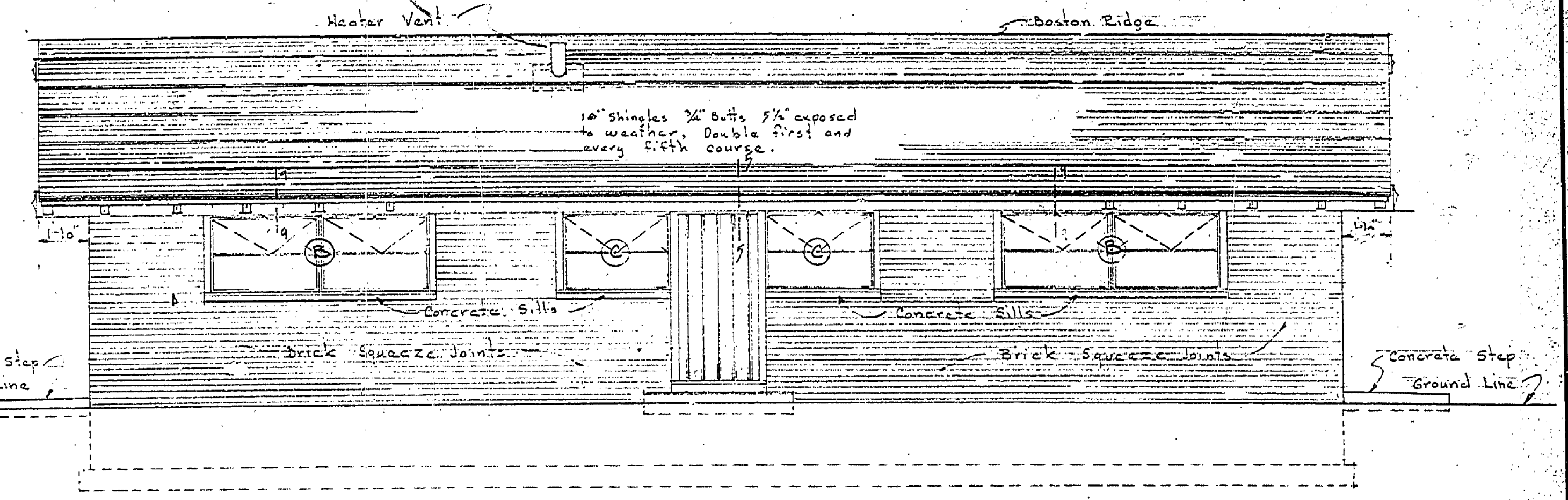


SECTION WATER HEATER ROOF VENT GAS FIRED HEATER Scale 1" = 1'-0"

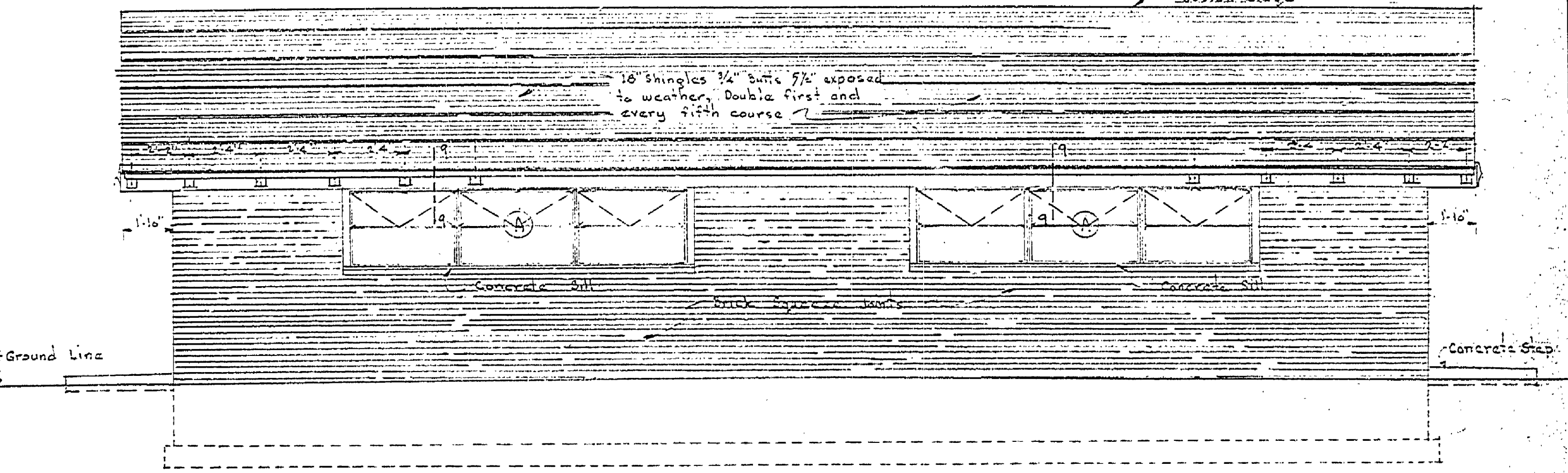
NOTE: - Pack glass used between cast iron pipe and copper roof joek for insulation



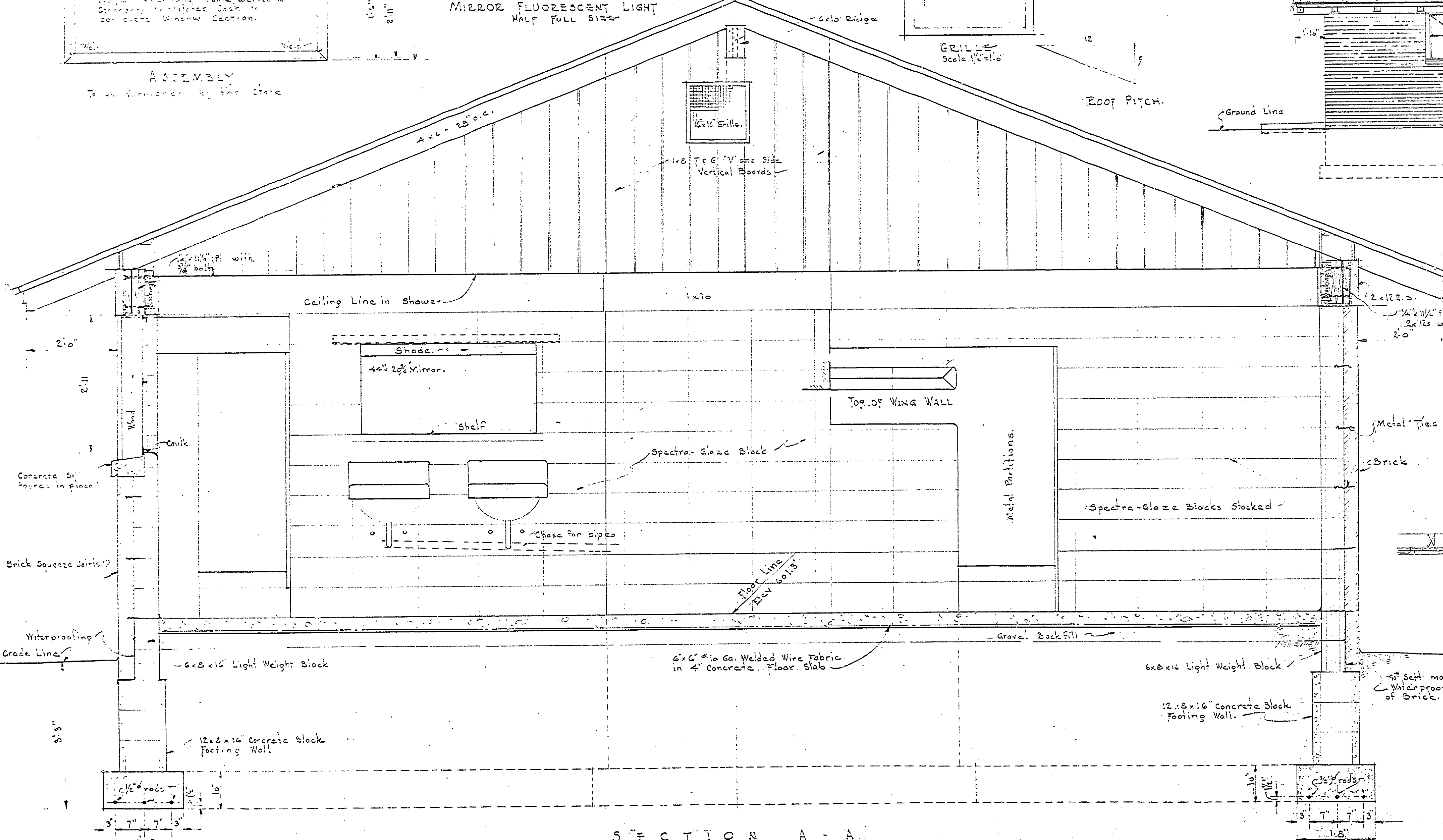
ELEVATION WATER HEATER ROOF VENT GAS FIRED HEATER Scale 1" = 1'-0"



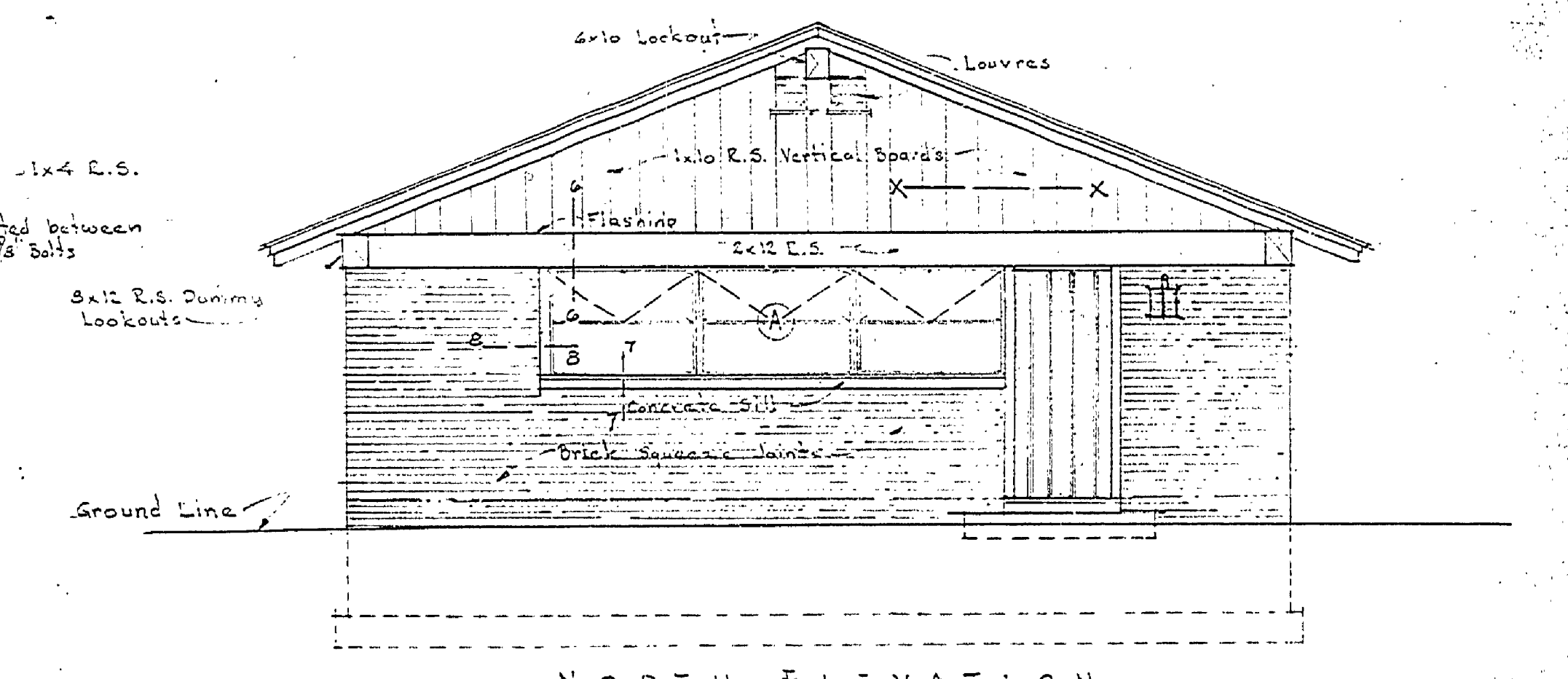
WEST ELEVATION Scale 1/2" = 1'-0"



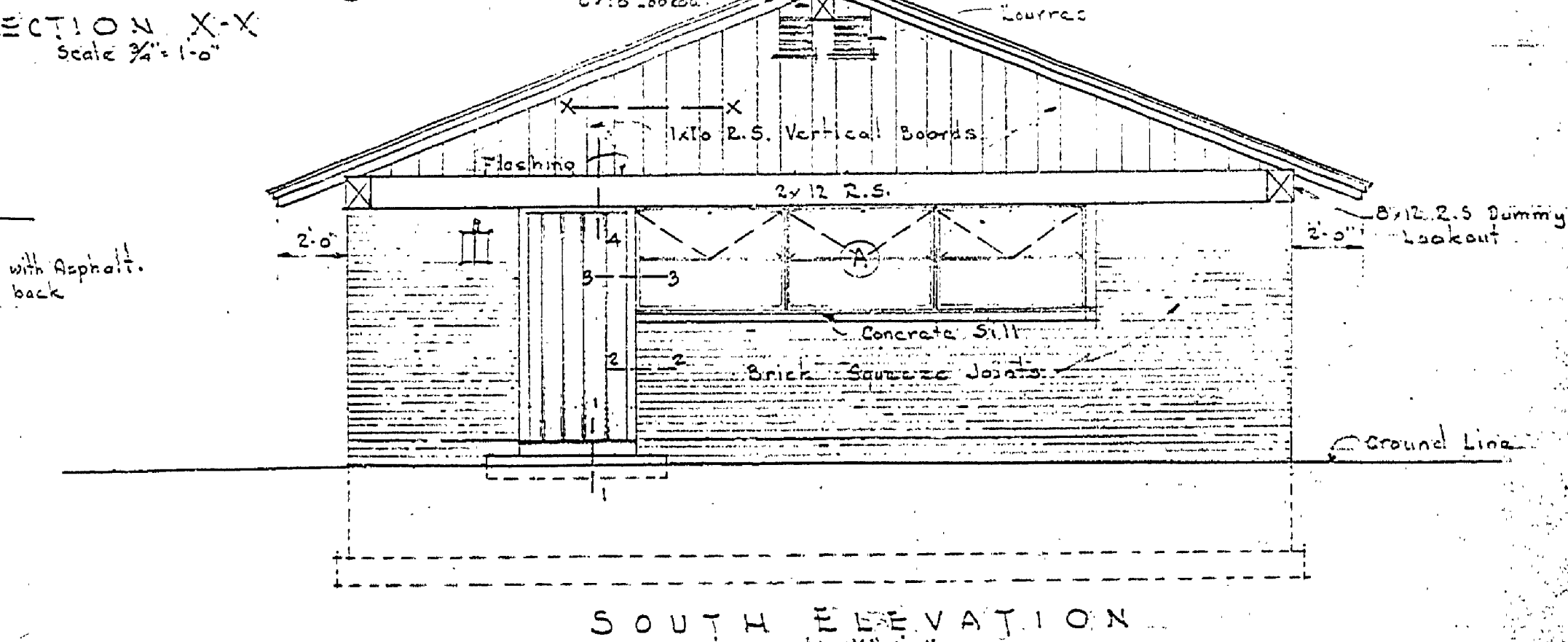
EAST ELEVATION Scale 1/2" = 1'-0"



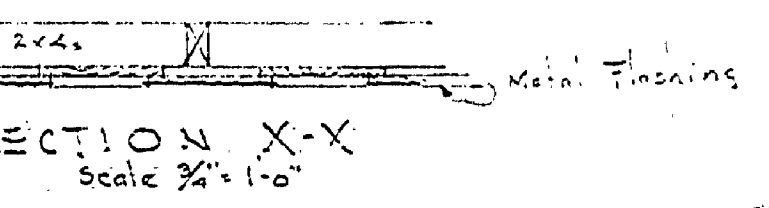
SECTION A - A Scale 3/8" = 1'-0"



NORTH ELEVATION Scale 1/2" = 1'-0"



SOUTH ELEVATION Scale 1/2" = 1'-0"



SECTION X - X Scale 3/8" = 1'-0"

DRAWN BY TRACED BY CHECKED BY DATE	REVIEWED BY SECTIONS ARCHITECTURAL ENGINEERING LANDSCAPE	APPROVED BY J.I.R. 7-17-56 J.I.R. 7-17-56 J.I.R. 7-17-56	ASSISTANT CHIEF IN CHARGE OF DESIGN DATE 7/17/56	PROJECT NO. 109-223-1C	MICHIGAN DEPARTMENT OF CONSERVATION PARKS AND RECREATION DIVISION	LUDINGTON STATE PARK TOILET, LAUNDRY & SHOWER BUILDING BEECHWOOD CAMPING AREA	SHEET NO. 3 OF	PLAN NO. A-105
---	---	---	--	------------------------	--	---	-------------------	----------------

MASTER PLAN #22