

B.M. #1. Elev 586.12
U.S.G.S. B.M. No. TT 61
So. side Sauble River
S.E. of Hi-way bridge

CURVE DATA
 $\Delta = 39^\circ 14' L$
 $D = 16^\circ 00'$
 $T = 128.0'$
 $L = 245.2'$
 $E = 22.0'$
 $R = 359.3'$
 $PC = 0+43.0$
 $PI = 1+71.0$
 $PT = 2+88.2$

CURVE DATA
 $\Delta = 32^\circ 30' R$
 $D = 12^\circ 00'$
 $T = 139.4'$
 $L = 270.8'$
 $E = 19.9'$
 $R = 478.3'$
 $PC = 4+22.6$
 $PI = 5+62.0$
 $PT = 6+93.4$

B.M. #2. Elev 587.86
Nail in 10" Birch
30' L - Sta 9+35

B.M. #3. Elev 585.60
Nail in 4" Pine
20' L - Sta 12+85

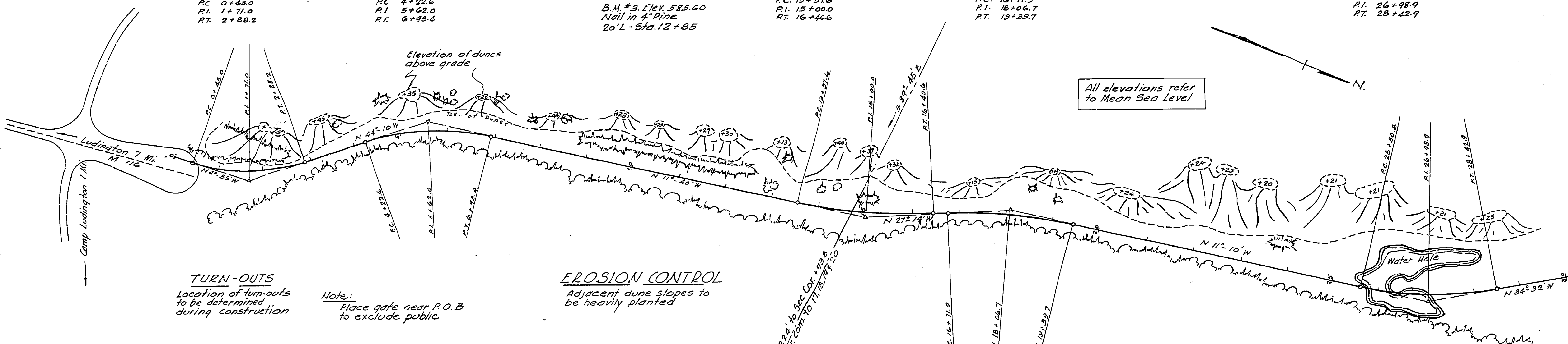
CURVE DATA
 $\Delta = 15^\circ 34' L$
 $D = 5^\circ 30'$
 $T = 142.4'$
 $L = 283.0'$
 $E = 9.6'$
 $R = 1042.1'$
 $PC = 13+57.6$
 $PI = 15+00.0$
 $PT = 16+40.6$

CURVE DATA
 $\Delta = 16^\circ 04' R$
 $D = 6^\circ 00'$
 $T = 134.8'$
 $L = 267.8'$
 $E = 9.4'$
 $R = 955.4'$
 $PC = 16+71.9$
 $PI = 18+06.7$
 $PT = 19+39.7$

B.M. #4. Elev 586.34
Nail in 3" Pine
20' L - Sta 18+35

CURVE DATA
 $\Delta = 23^\circ 22' L$
 $D = 8^\circ 00'$
 $T = 148.1'$
 $L = 292.1'$
 $E = 15.1'$
 $R = 716.8'$
 $PC = 25+50.8$
 $PI = 26+98.9$
 $PT = 28+42.9$

All elevations refer to Mean Sea Level

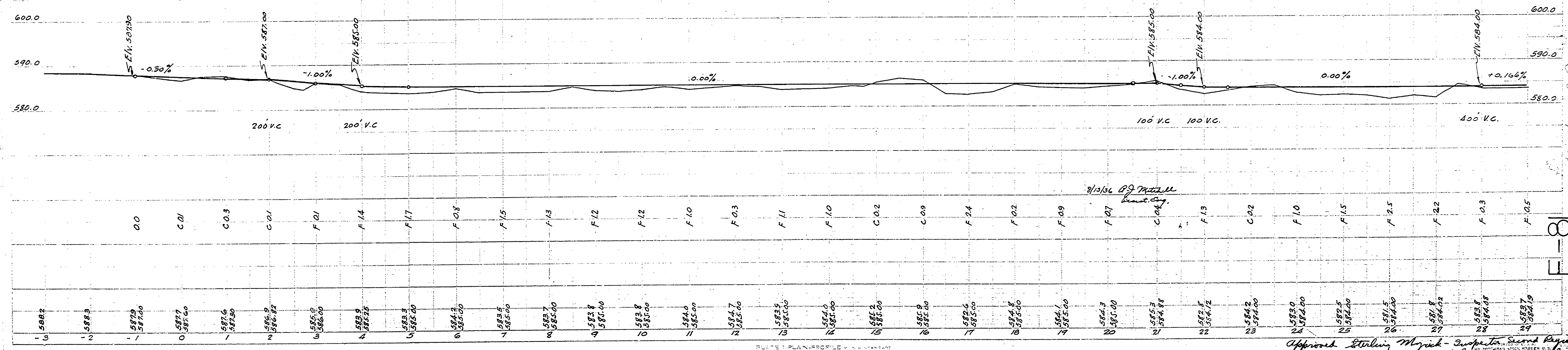
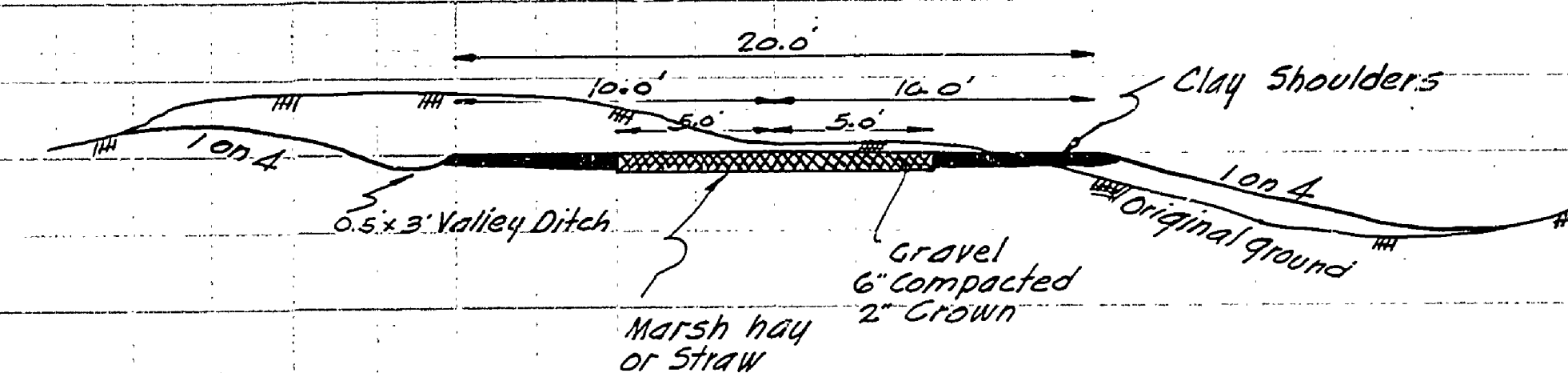


TURN-OUTS
Location of turn-outs to be determined during construction

Note: Place gate near P.O.B to exclude public

EROSION CONTROL
Adjacent dune slopes to be heavily planted

M 116 P.O.B. Project 205 A



R.A. Fultz

K.M. Anderson

Light House Road

Approved: Stalling Mynick - Supervisor Second Region
 Date: 8/13/36
 E-7