

B.M. #8. EIV. 594.70  
2" Iron Pipe  
130' L Sta. 67+23.

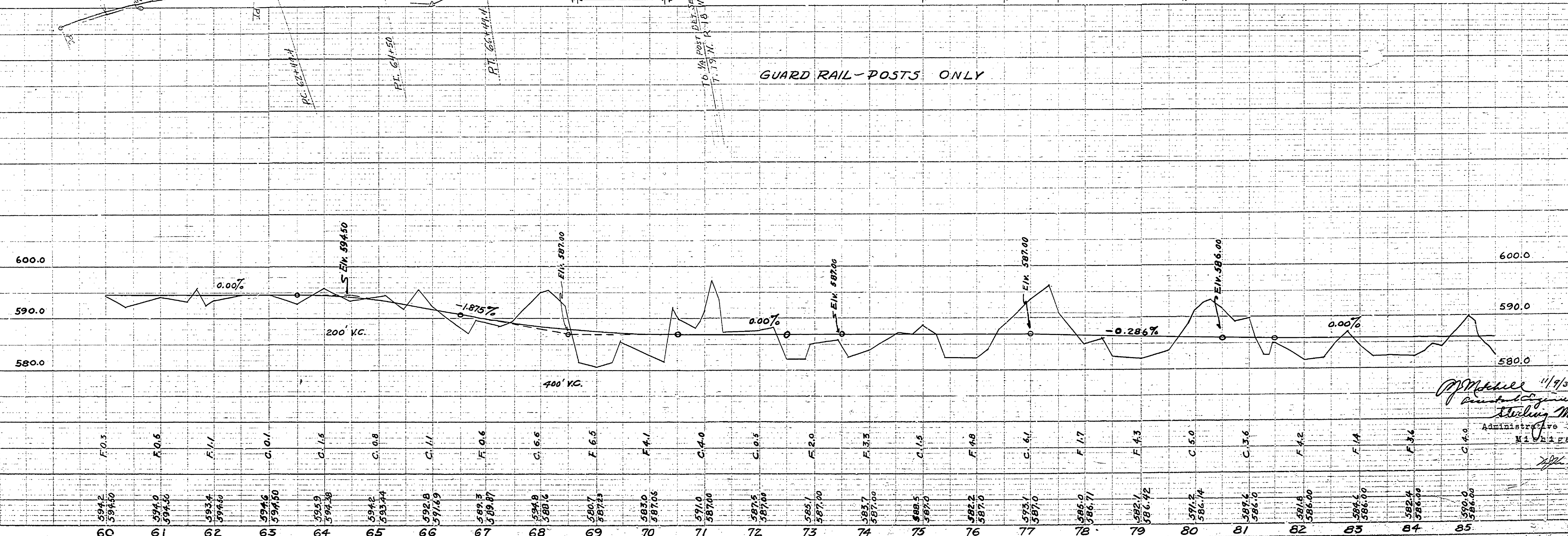
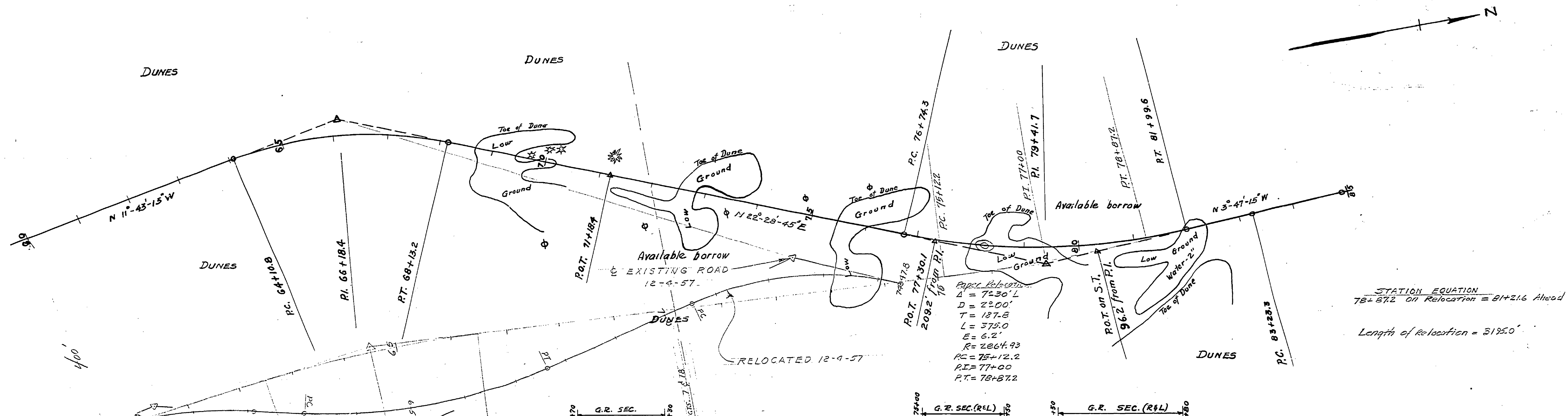
**CURVE DATA**  
A= 34°12'R  
D= 8°30'  
T= 207.6'  
L= 402.4'  
E= 31.2'  
R= 674.7'  
P.C. 64+10.8  
P.I. 66+18.4  
P.T. 68+13.2

P.O.T. Sta. 71+18.4  
Tacked stake

B.M. #9. EIV. 589.66  
Bent spike in limb of  
12" Jack Pine  
36' L. Sta. 71+20

**CURVE DATA**  
A= 26°16'L  
D= 5°00'  
T= 267.4'  
L= 525.3'  
E= 30.8'  
R= 1146.3'  
P.C. 76+74.3  
P.I. 79+41.7  
P.T. 81+99.6

B.M. #10. EIV. 584.89  
2" Iron Pipe  
160' R. Sta. 81+26



DATE 9/56  
BY K.M. Knudson  
CHECKED  
APPROVED

DATE 9/56  
BY K.M. Knudson  
CHECKED  
APPROVED

M. J. Miller 11/9/56  
Assistant Engineer  
Richard M. Smith  
Administrative Inspector  
Mass. Dept. of Transportation

Ludington S.P.  
Light House Road

NOV 17 1956