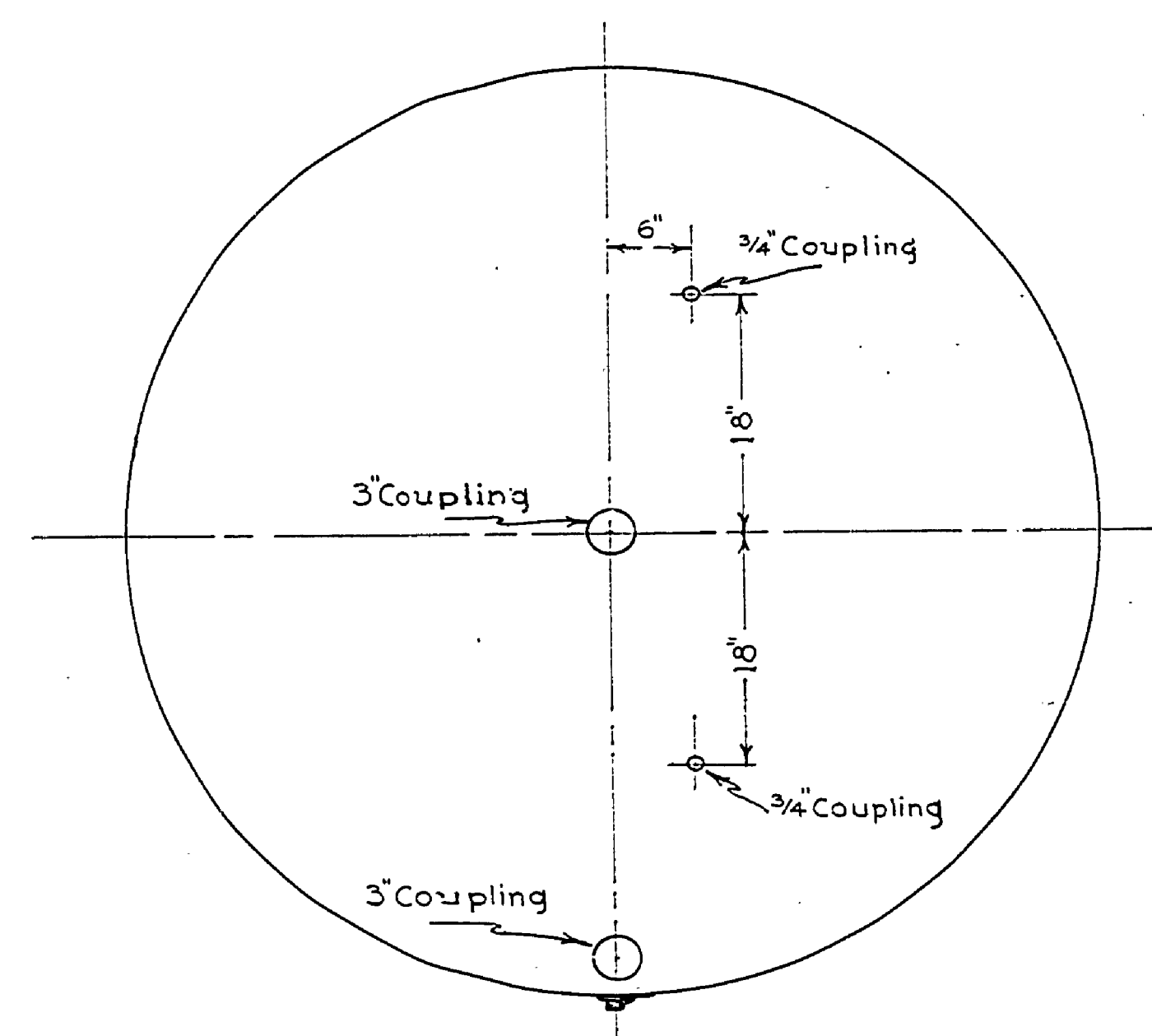


SIDE VIEW OF
5,000 GALLON WATER STORAGE TANK



LEFT END VIEW

NOTE:
W.P. - 100#
Test - 150#
Shop Paint 2 Coats
Black Graphite -
Outside Only.
One Tank Required.

E-83

| | | | |
|--|---------------------------------|---------------------|-----------|
| DEPARTMENT OF THE INTERIOR NATIONAL PARK SERVICE And MICHIGAN DEPARTMENT OF CONSERVATION CO-OPERATING | | | |
| BRANCH OF PLANNING | | STATE PARK DIVISION | |
| SYMBOL | LUDINGTON STATE PARK | | SHEET NO. |
| NUMBER | STORAGE FACILITIES (5000 GAL.) | | FILE NO. |
| DRAWN BY | FOR PUBLIC CAMP GROUND NO. 1 | | |
| | Scale 1"=1' | | |
| CHECKED | PROJECT SUPERINTENDENT | DESIGNED | |
| DATE | | DATE | |
| RECOMMENDED FOR CONSTRUCTION | FIFTH REGIONAL INSPECTOR | SUBMITTED | |
| DATE | | DATE | |
| APPROVED FOR CONSTRUCTION | FIFTH REGIONAL OFFICER N.P.S. | APPROVED | |
| DATE | | DATE | |