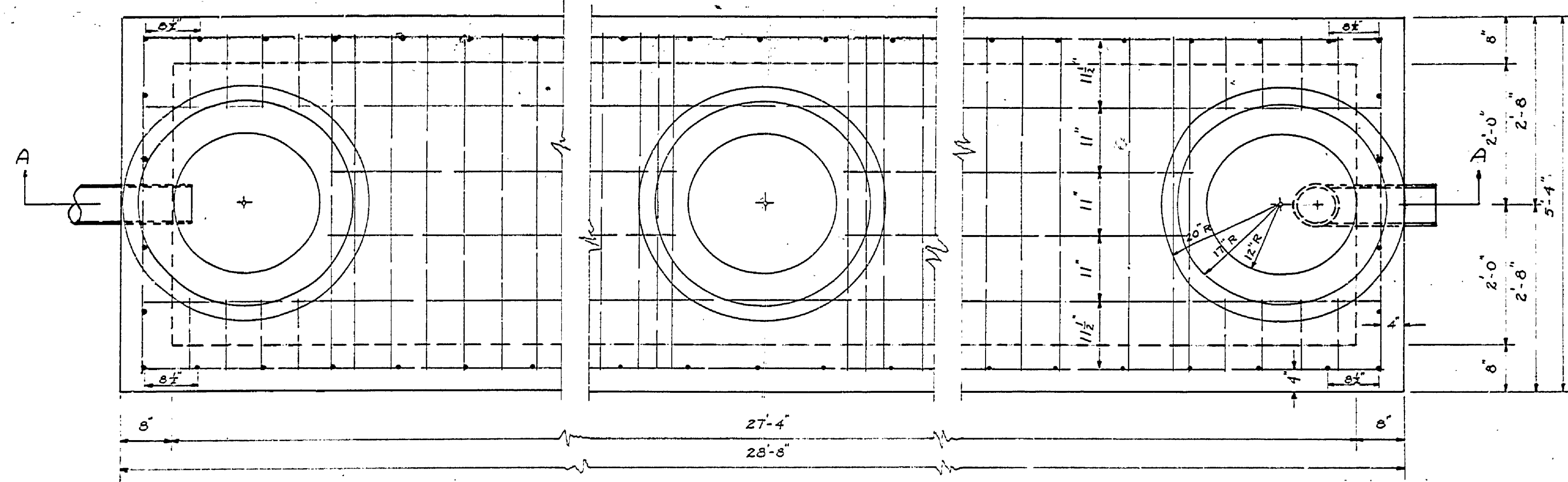


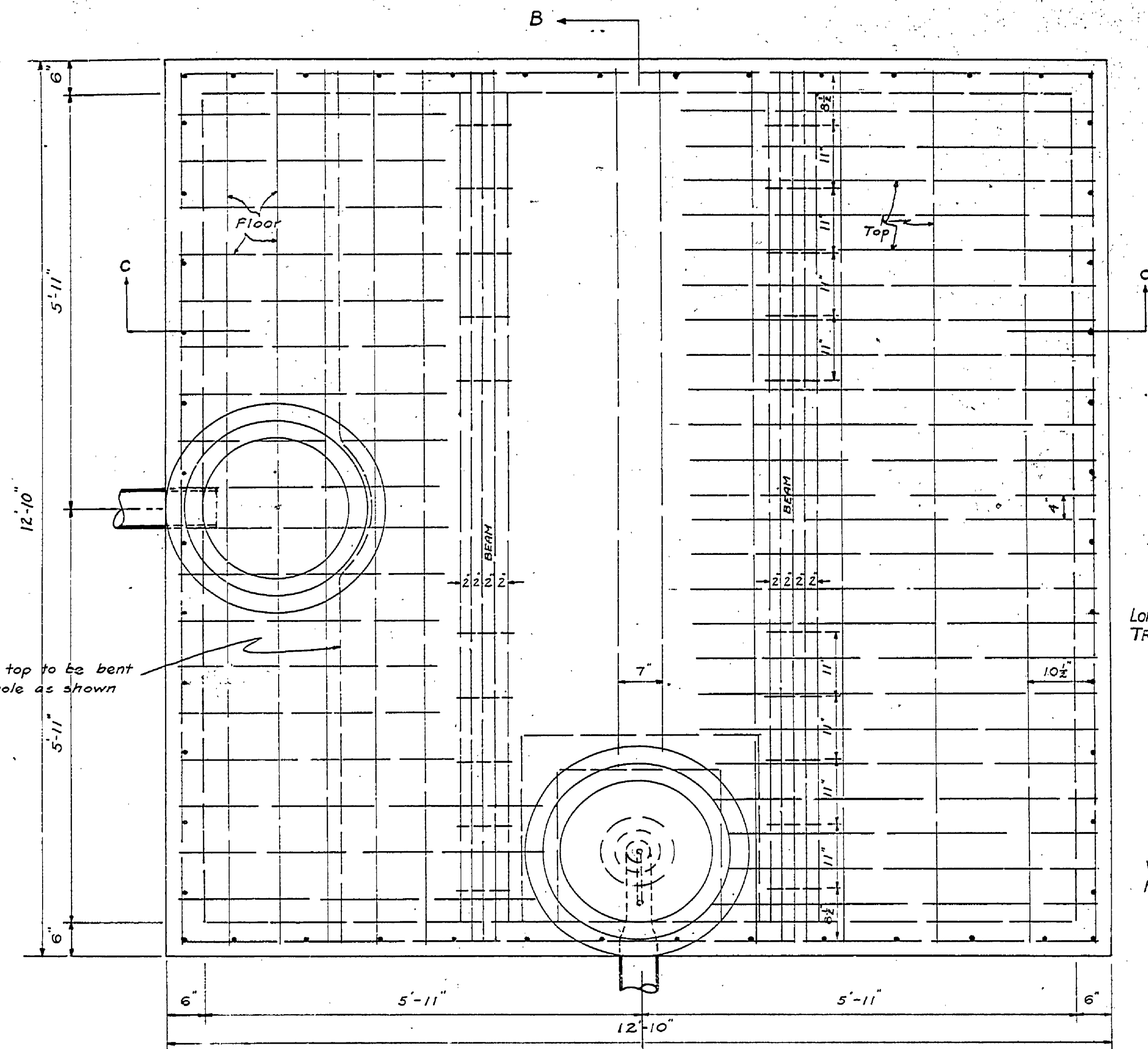
SEPTIC TANK



PLAN  
SCALE: 3/8" = 1'-0"

DOSING CHAMBER

PLAN VIEW  
SCALE: 3/8" = 1'-0"



EXCEPT AS NOTED  
TOP REINFORCING  
LONGITUDINAL RODS - 3/8" φ 15" O.C.  
TRANSVERSE RODS - 3/8" φ 6" O.C.

FLOOR REINFORCING  
1/2" φ 8" O.C. - BOTH WAYS

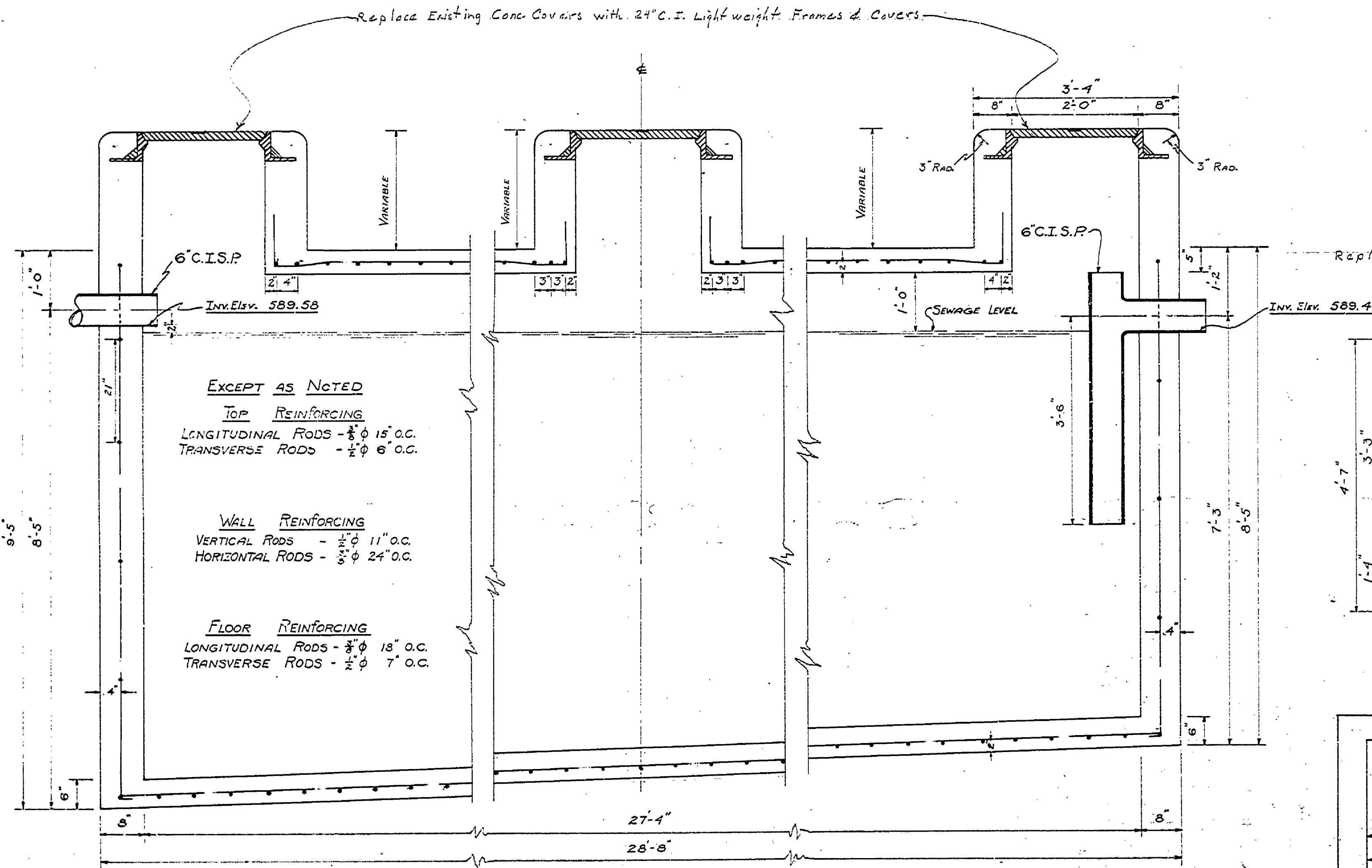
WALL REINFORCING  
VERTICAL RODS - 3/8" φ 12" O.C.  
HORIZONTAL RODS - 3/8" φ 18" O.C.

BEAM REINFORCING  
1" φ RODS.

STIRRUPS  
1/2" φ RODS

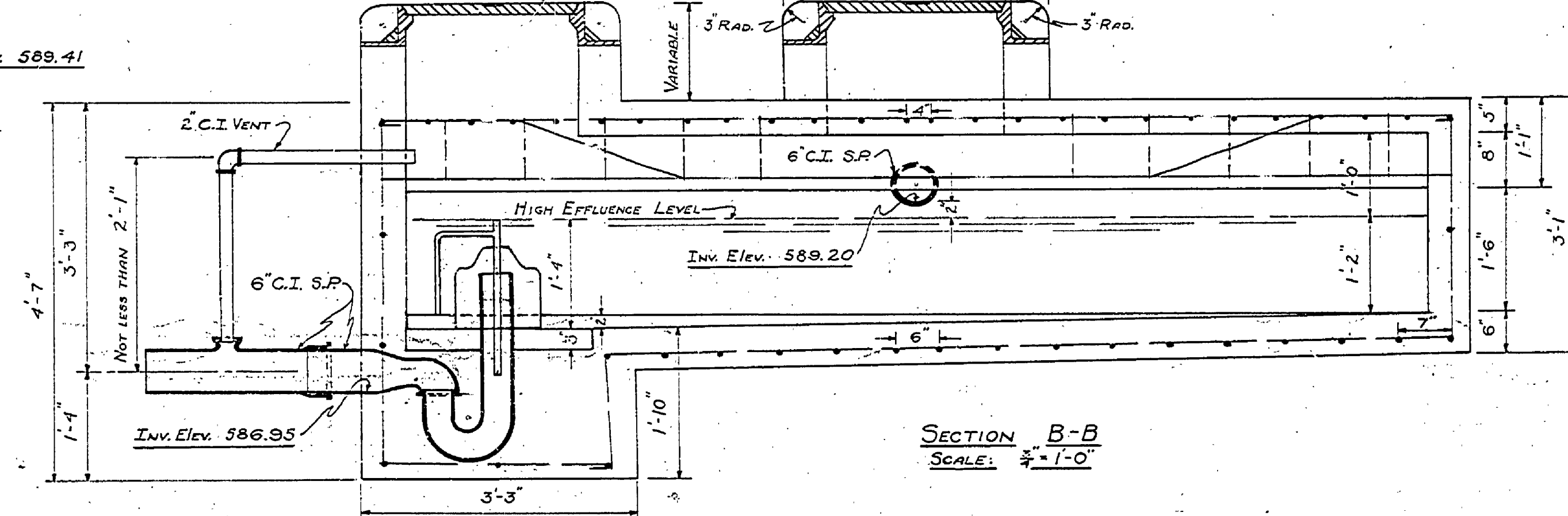
This rod in top to be bent around manhole as shown

Replace Existing Conc. Covers with 24" C.I. Light weight Frames & Covers

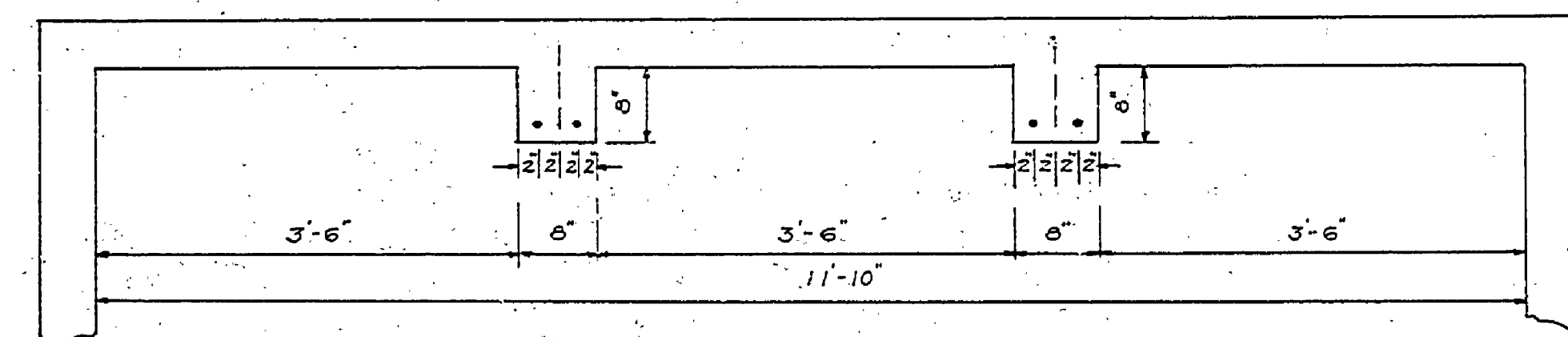


SECTION A-A  
SCALE: 3/8" = 1'-0"

Replace Conc. Cover with 24" C.I. Frame & Cover



SECTION B-B  
SCALE: 3/8" = 1'-0"



SECTION C-C  
SCALE: 3/8" = 1'-0"

UNITED STATES DEPARTMENT OF THE INTERIOR NATIONAL PARK SERVICE COOPERATING WITH MICHIGAN DEPARTMENT OF CONSERVATION		
DRAWN BY K.M.K.	LUDINGTON STATE PARK SP-2 DISPOSAL SYSTEM	PLAN SP - MICH 1100 2011-12 SCALE 3/8" = 1'-0"
DESIGNED BY H.C.M. 9K	COMBINATION BUILDING P.C.G. No. 2 - Sec. B	CAMP DESTINATION SP-2
CHECKED BY R.G.M. 9K		DATE 12-6-38
PREPARED BY [Signature]	DATE 12/20/38	
RECOMMENDED [Signature]		
APPROVED PINE CLIFF LODGE		

E-99