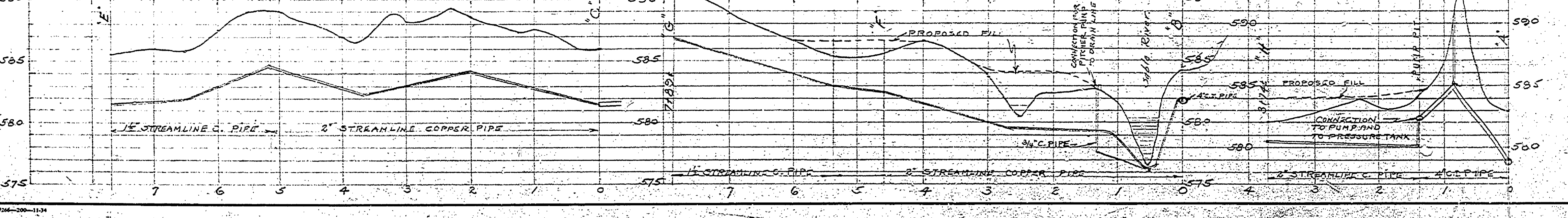
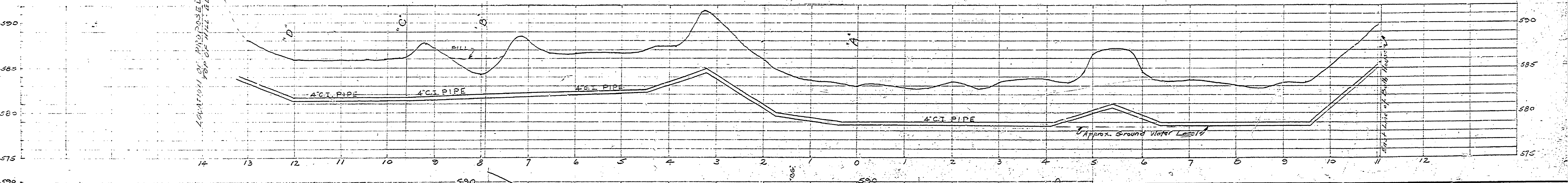
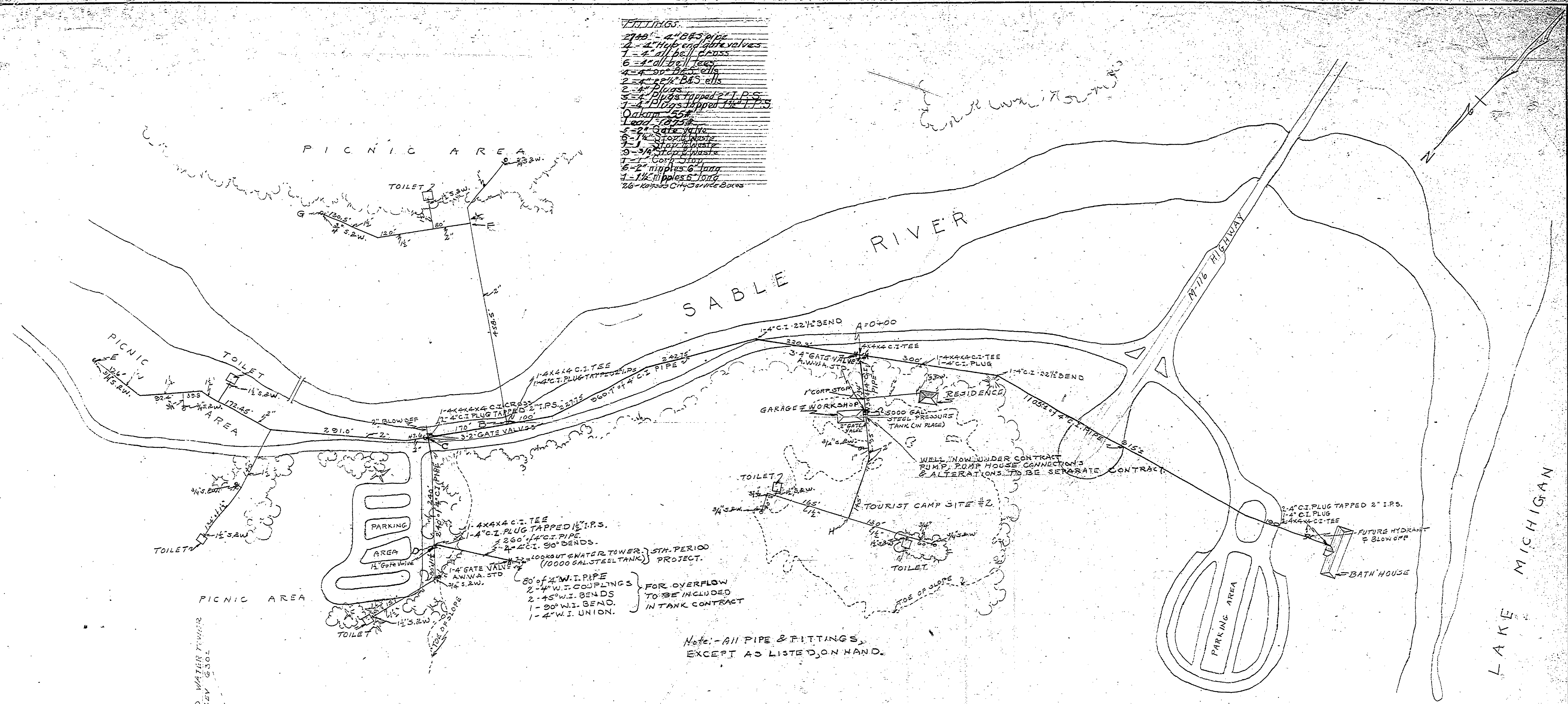


- FITTINGS**
- 2740' - 4" B&S pipe
 - 4 - 4" Hub end gate valves
 - 7 - 4" all ball cross
 - 6 - 4" all ball tees
 - 4 - 4" 90° B&S elbows
 - 2 - 4" 50' B&S ells
 - 2 - 4" Plugs tapped 2" I.P.S.
 - 7 - 4" Plugs tapped 1 1/2" I.P.S.
 - Oakum - 55#
 - Lead - 100#
 - 5 - 2" Gate Valve
 - 6 - 1/2" Storm Waste
 - 2 - 1" Storm Waste
 - 9 - 3/4" Storm Waste
 - 1 - 1" Corp Stop
 - 6 - 2" nipples 6" long
 - 1 - 1 1/2" nipple 6" long
 - 26 - 100000 City Service Boxes



U.S. DEPARTMENT OF THE INTERIOR NATIONAL PARK SERVICE STATE PARK EMERGENCY CONSERVATION WORK		STATE OF MICHIGAN TUDINGTON STATE PARK SP#2 WATER SYSTEM PIPE LINES Scale: 1"=100' PROJECT No. 316 DESIGNER: [Signature] CHECKED BY: [Signature] DR. BY: [Signature] DATE DR: 1/12/25 DATE: []	
CHECKED BY DATE	DISTRICT OFFICER	PROCUREMENT OFFICER ALTERNATE	ALLOTMENT AVAILABLE
RECOMMENDED FOR CONSTRUCTION DATE	DISTRICT OFFICE ENGINEER	SUBMITTED BY	SHEET No. 1 of 1
APPROVED FOR CONSTRUCTION DATE	DISTRICT INSPECTOR	APPROVED:	FILE No.
			MICH. CONSERVATION COM.