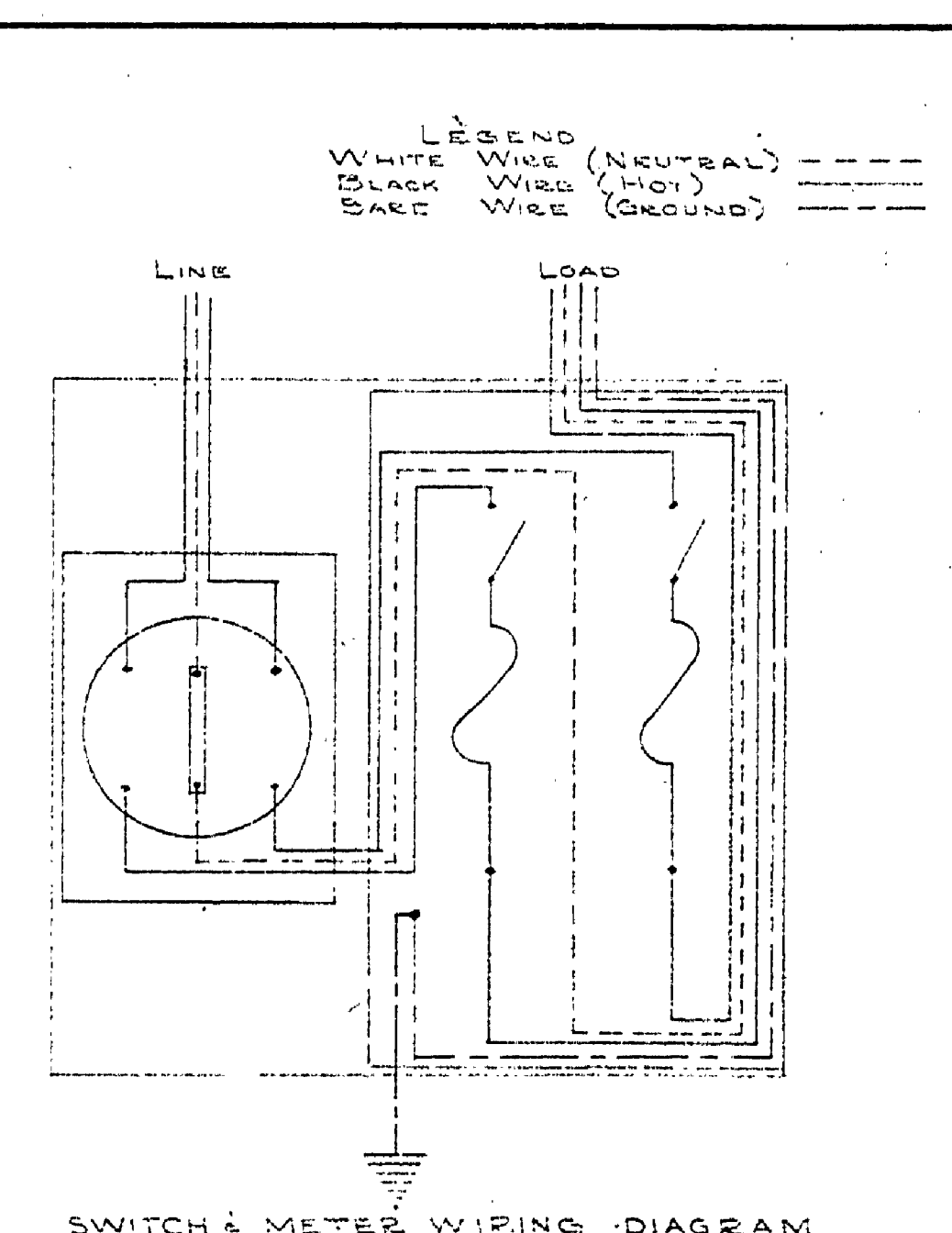
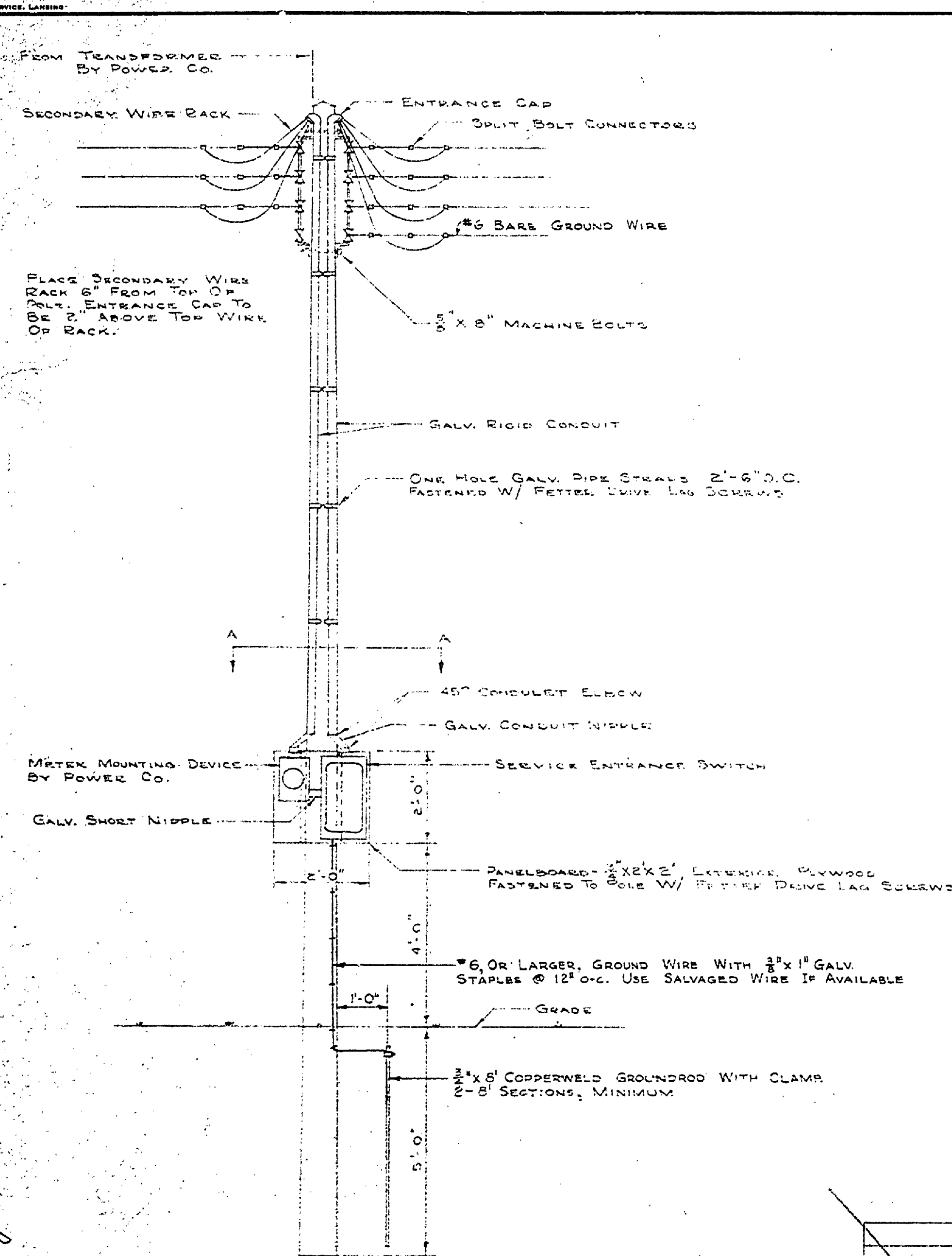
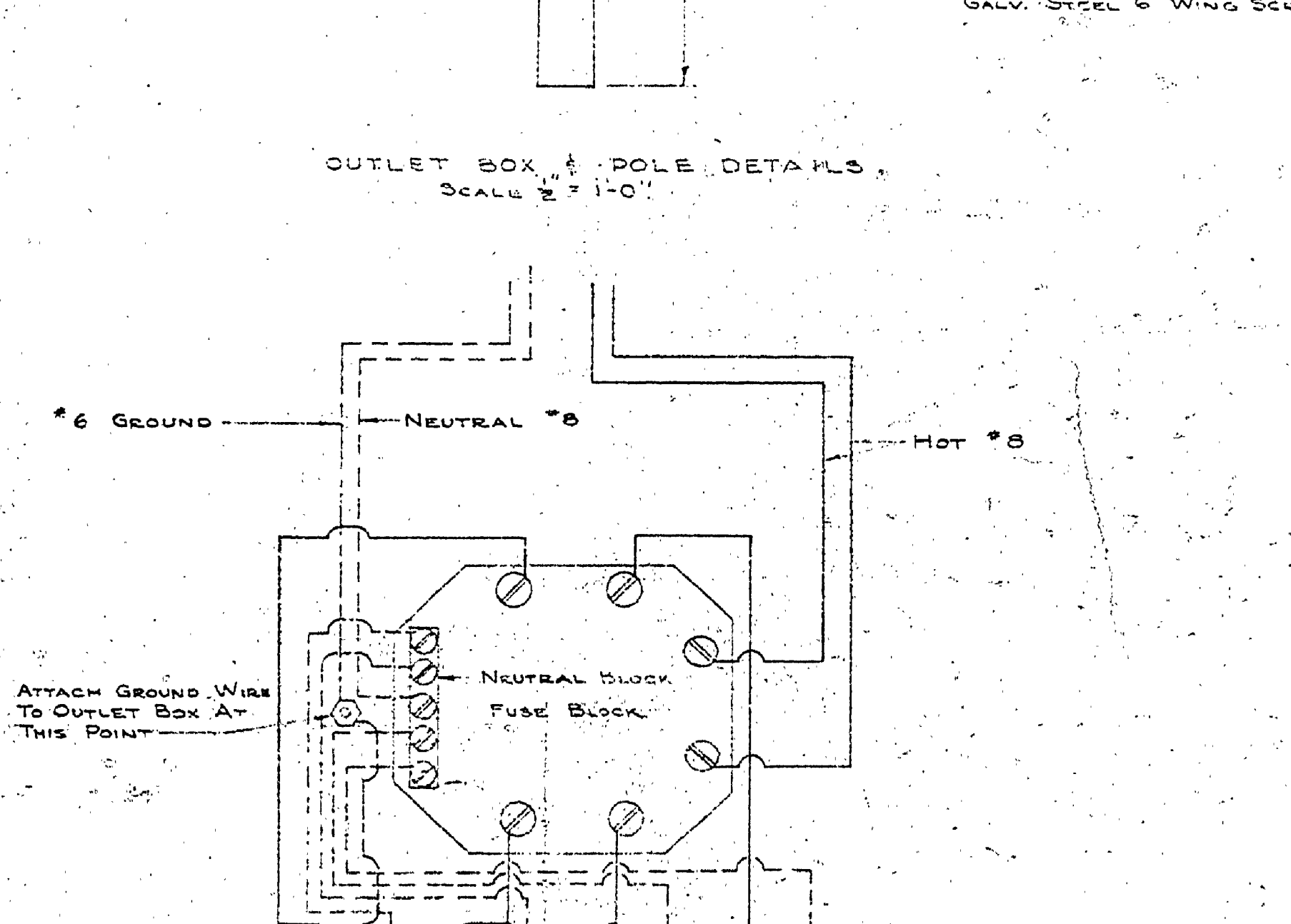
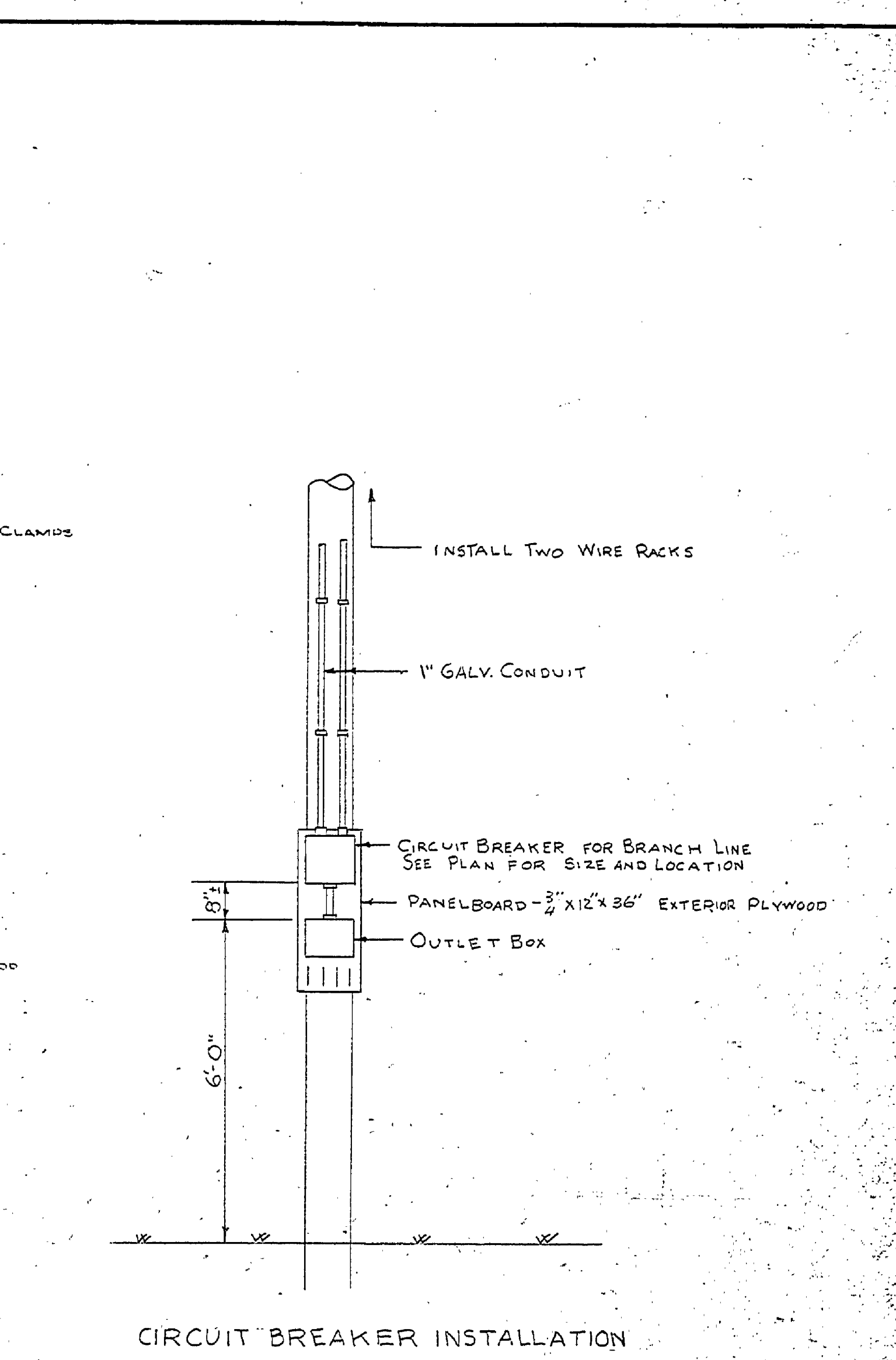
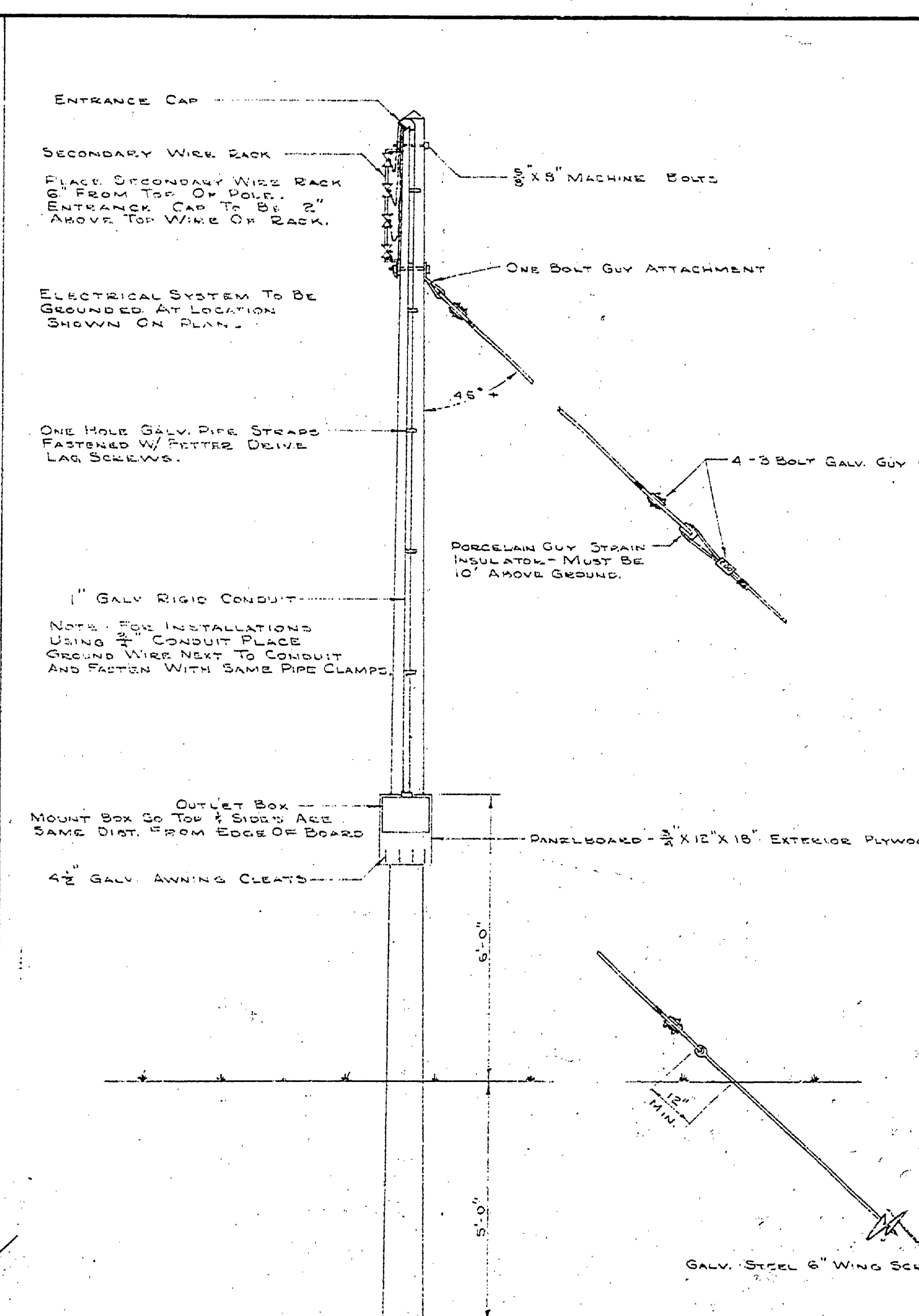
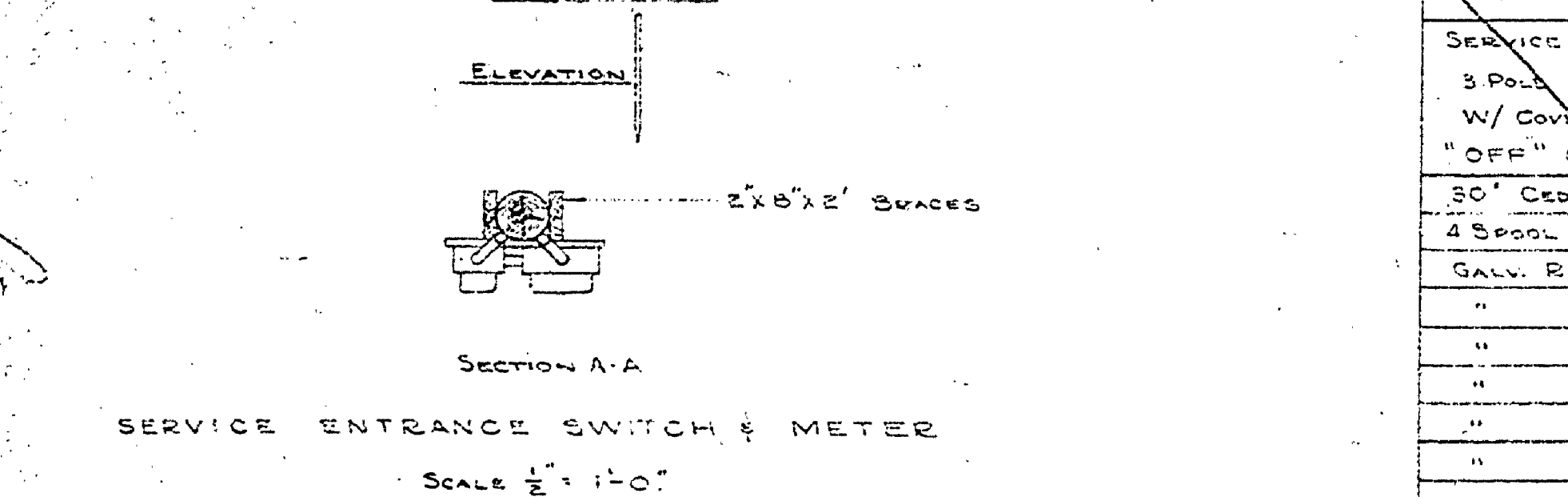


DATE	REVISIONS
8-7-68	1
8-7-68	2
8-7-68	3
8-7-68	4
8-7-68	5
8-7-68	6



BILL OF MATERIAL		QUANTITY
ITEM		
SERVICE ENTRANCE SWITCH - NEW DUTY SAFETY SWITCH 3 WIRE 3 POLE 2 FUSE S/N 240 VOLT RAINTIGHT NEMA TYPE 3 W/ COVER INTERLOCK & PADLOCK ATTACHMENT TO LOCK SWITCH "OFF" OR "ON" & COVER "CLOSED"	W/1" HUB W/2" HUB IN TOP IN TOP	1
30' CEDAR POLE W/ 5" MINIMUM TOP		1
2 SPOOL H.D. SECONDARY WIRE RACK W/ INSULATORS (8" SPACING)		2
1" GALV. RIGID CONDUIT	10' 2'-40"	1
" " " SHORT NIPPLE	1' 2'-4"	1
" " " NIPPLE 6" LONG	1' 2'-1"	1
" " " 45° ELBOW	1' 4'-4"	1
" " " BUSHING	1' 2'-2"	1
" " " LOCKWASHER	1' 2'-2"	1
" " " ENTRANCE CAP	1' 2'-2"	1
" " " PIPE STRAP ONE HOLE	1' 10'-10"	1
FETTER DRIVE LAG SCREW 1/2" X 2"	10	10
TVS THW STR. DB Cu. WIRE	150' 2' 165' 3/4"	1
3/8" X 8" MACHINE BOLT & WASHER	2	2
SPLIT BOLT CONNECTOR	2	2
PANELLBOARD - 2' X 2' X 1/2" EXTERIOR PLYWOOD		1
1/2" STR. BARE Cu. WIRE	25'	1
Groundrod - 1/2" x 8' Copperweld Sectional Rod, Oliver #729448	2, 8' Sects. (Min)	1
Ground Wire Clamp, 1/2" (Safety Set Screw), Oliver #9924	1 ea.	1
1/2" Driving Stud, Oliver #729535	1 ea.	1
1/2" Bronze Coupling, Oliver #79535	2 (Minimum)	2



BILL OF MATERIAL		QUANTITY
ITEM		
TRAILER OUTLET BOX W/ 1" HUB IN TOP		1
25' CEDAR POLE W/ 5" MINIMUM TOP		1
1/2" STR. BARE Cu. WIRE (IN CONDUIT) WHITE	20'	1
" " " " " BLACK	40'	1
1" GALV. RIGID CONDUIT	15'-0"	1
" " " ENTRANCE CAP	1	1
" " " PIPE STRAP ONE HOLE	5	5
4 SPOOL H.D. SECONDARY WIRE RACK W/ INSULATORS (8" SPACING)	1	1
SPLIT BOLT CONNECTOR (SIZE PER PLAN)	4	4
3/8" X 8" MACHINE BOLT	2	2
GALV. STEEL ROUND WASHER FOR 3/8" BOLT	4	4
1/2" X 2" FETTER DRIVE LAG SCREW	5	5
1/2" GALV. STEEL LINE CLEAT	4	4
1/2" X 8" NICKEL PLATED OVAL HEAD WOOD SCREWS	31	31
PANELLBOARD - 2' X 2' X 1/2" EXTERIOR PLYWOOD	1	1
1/2" STR. BARE Cu. WIRE	20'	1
1/2" STRANDED GUY WIRE - DOUBLE GALV.	32'	1
4" X 3" BOLT GALV. GUY CLAMPS	4	4
4" PORCELAIN GUY STRAIN INSULATOR	1	1
1 BOLT GALV. GUY ATTACHMENT	1	1
1/2" GALV. STEEL WING SCREW ANCHOR	1	1

SERVICE ENTRANCE SWITCH AND OUTLET BOX

MICHIGAN DEPARTMENT OF CONSERVATION, PARKS AND RECREATION DIVISION

LUDINGTON STATE PARK RIVERSIDE CAMPGROUND