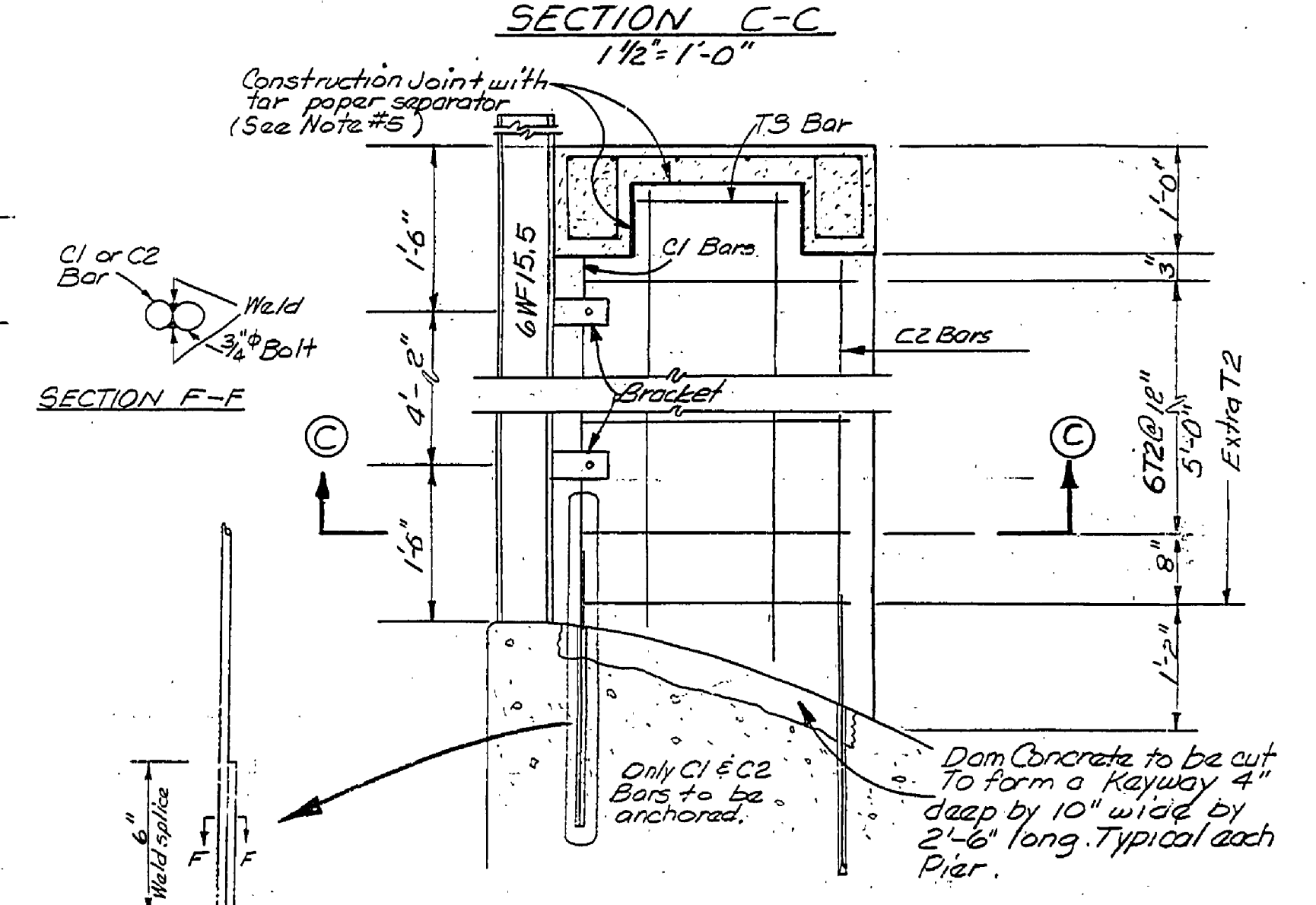
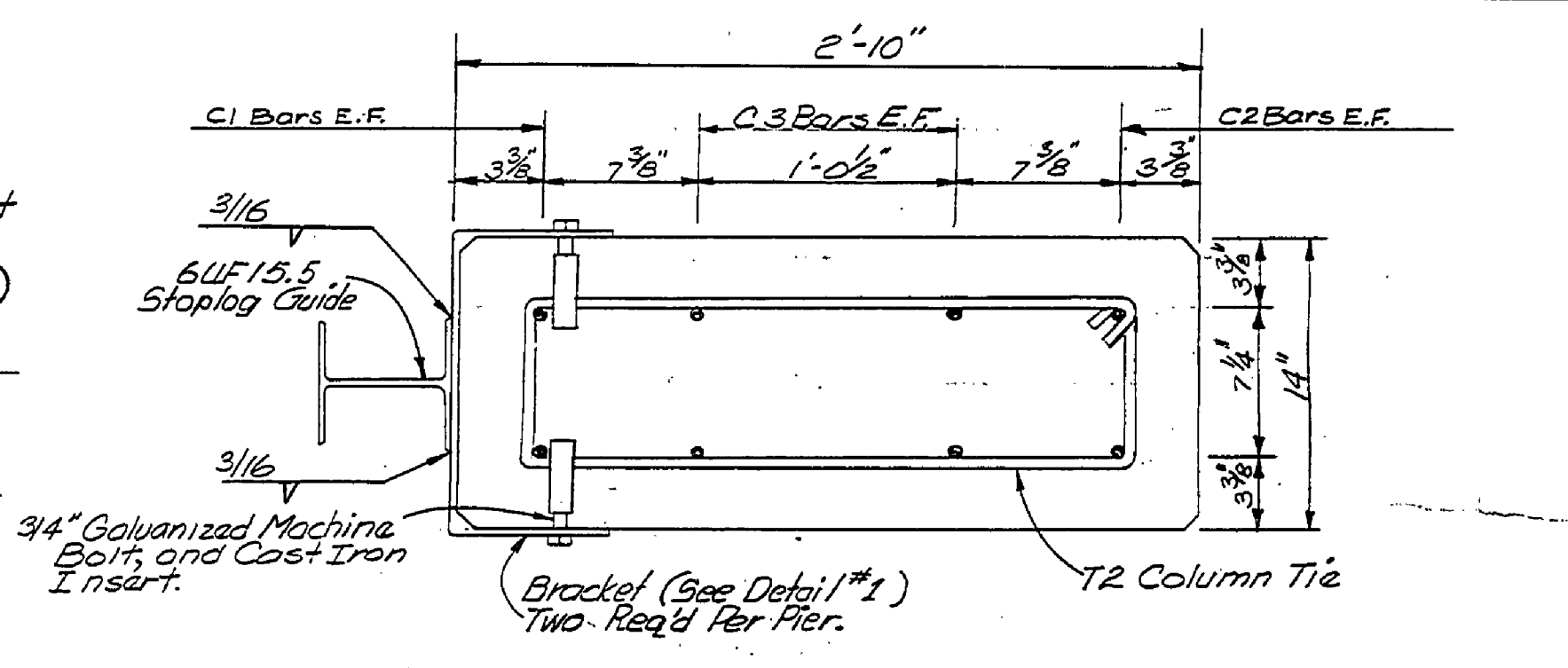
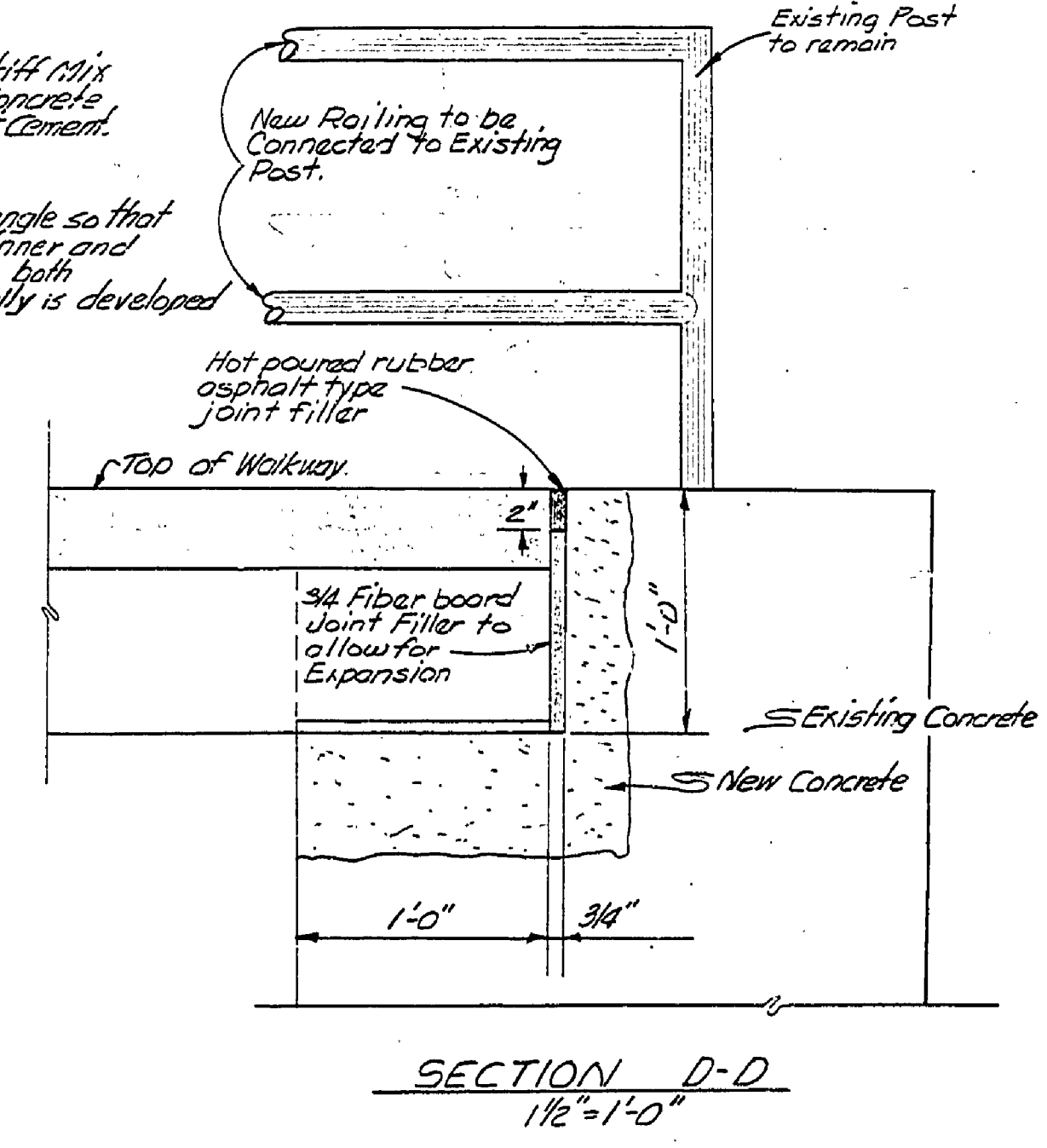
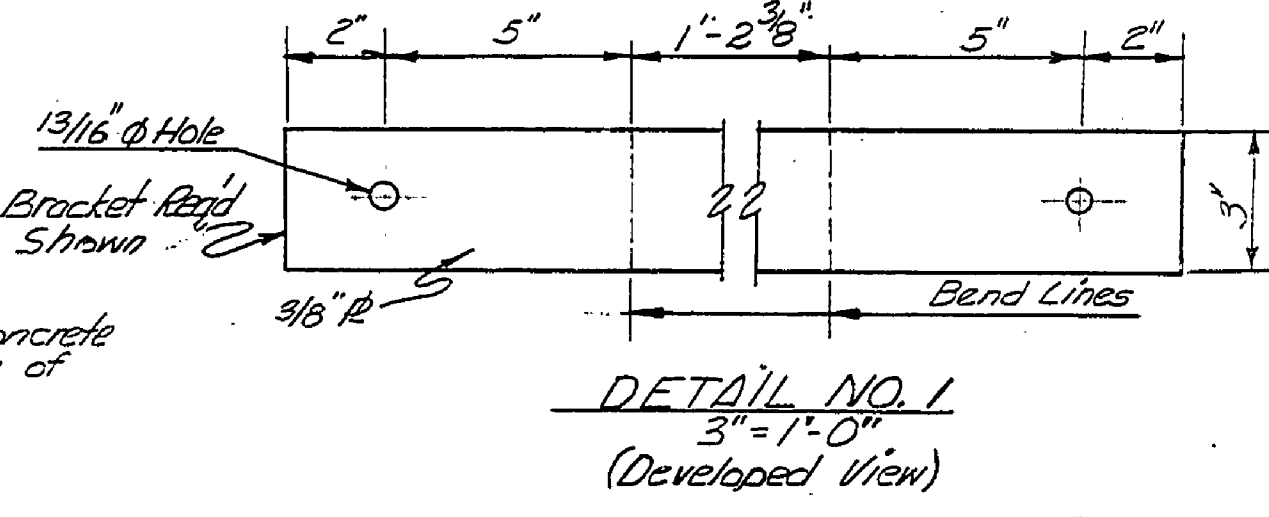
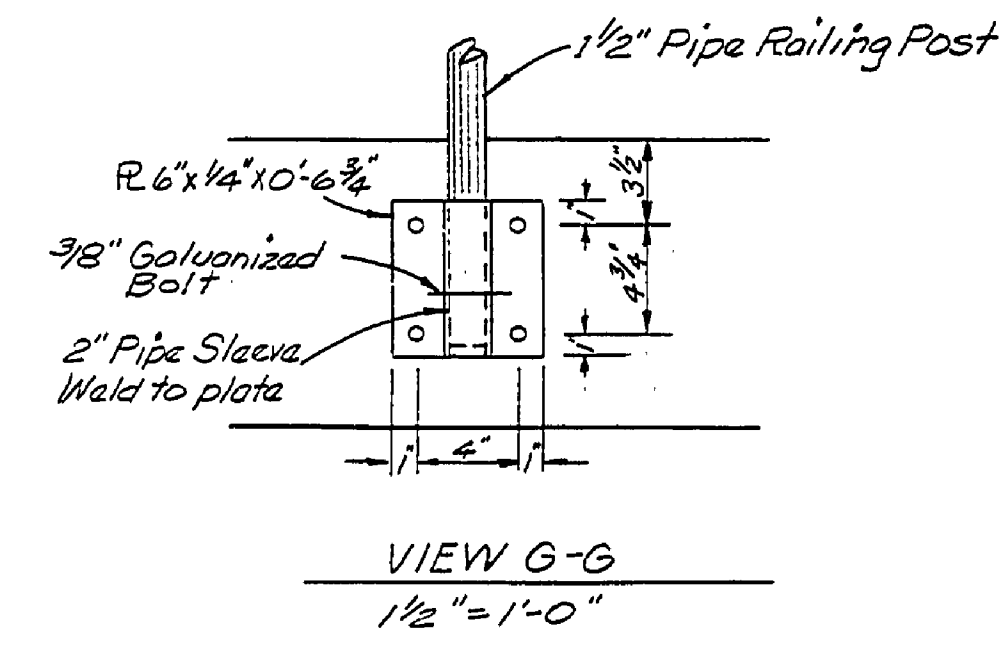
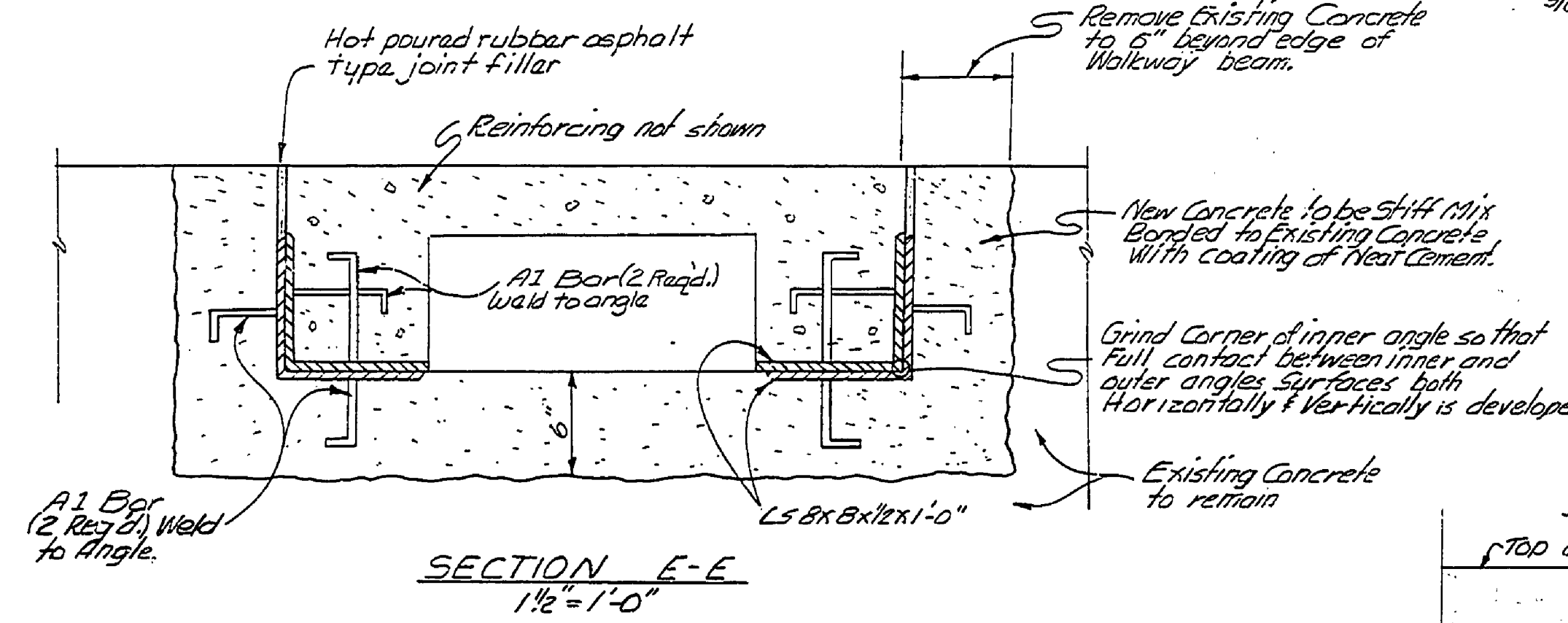
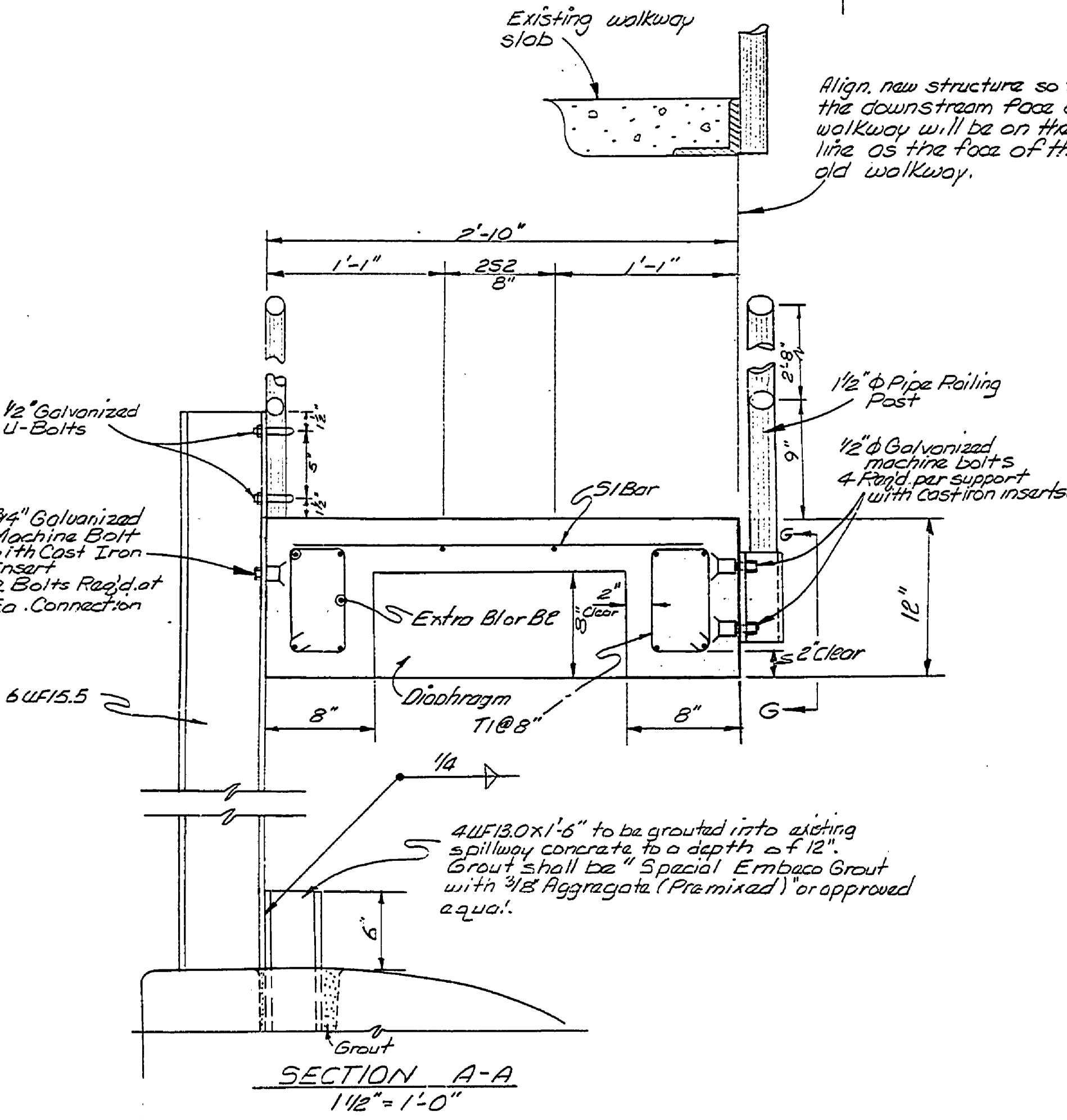
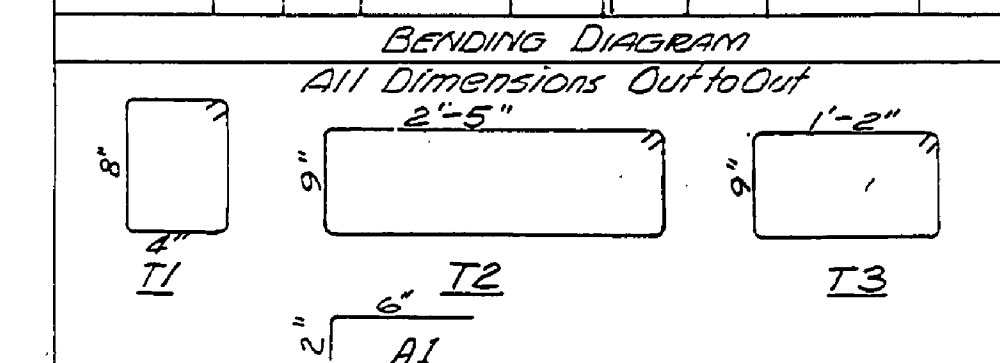


NOTES:

1. Reinforcing steel to be intermediate grade.
2. Concrete shall have a minimum 28 day strength of 3500 P.S.I.
3. All exposed edges and corners are to be chamfered 3/4".
4. E.F. means each face.
5. Top of Pier concrete at the construction joint to be troweled to smooth finish before placing separator paper & walkway pour.
6. Remove existing structural steel frame work to top of concrete.
7. Connect New railing to existing railing post at each end of Walkway.
8. The Walkway chainlink fencing is to be salvaged and reused on the New Walkway Railing.



STEEL SCHEDULE						
LOCATION	STRAIGHT BARS			BENT BARS		
	NO.	SIZE	LENGTH MARK	NO.	SIZE	LENGTH MARK
	18	#4	13'-5"	B1	200	#3 2'-10" T1
	35	#4	12'-6"	B2		
	59	#3	2'-6"	S1	35	#4 7'-1" T2
	12	#3	12'-6"	S2	5	#4 4'-7" T3
	10	#6	6'-0"	C1	16	#4 0'-8" A1
	10	#6	6'-10"	C2		
	20	#4	6'-11"	C3		
	12	#4	2'-5"	C4		



Note: Anchor bolt holes shall be drilled to sound, non deteriorated concrete and to a minimum depth of 15".