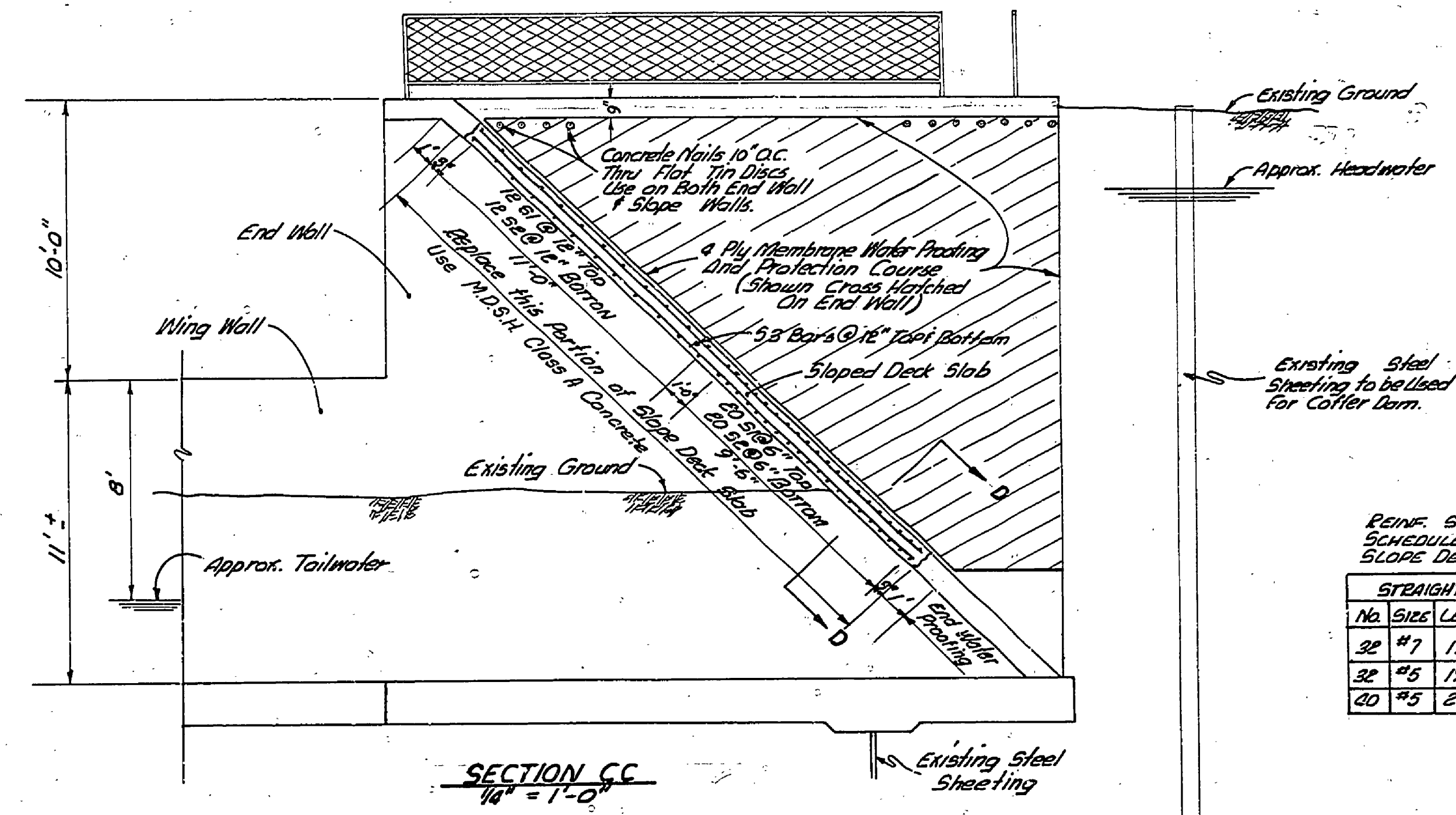


SECTION BB
Not to Scale

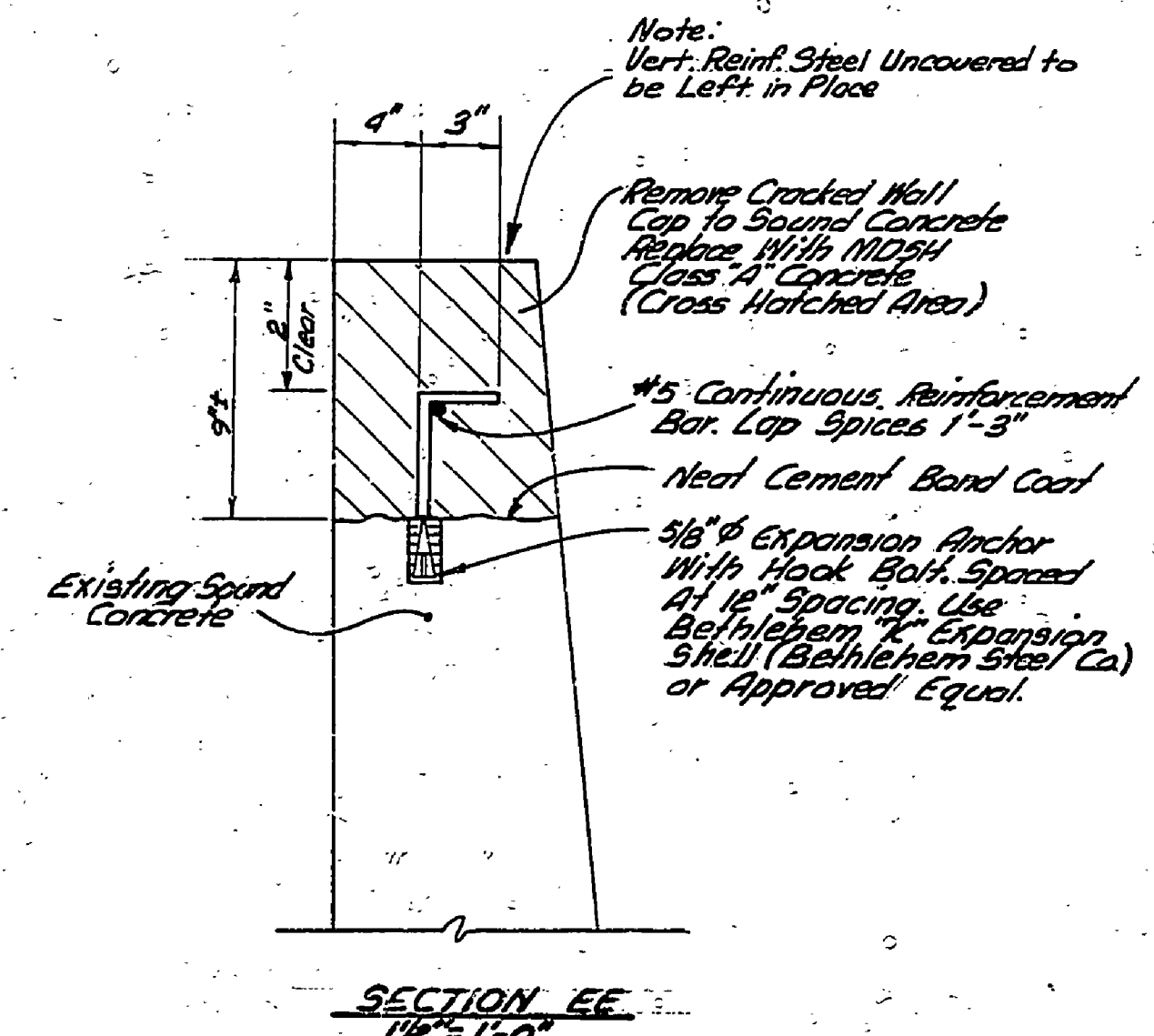


SECTION CC
1/4" = 1'-0"

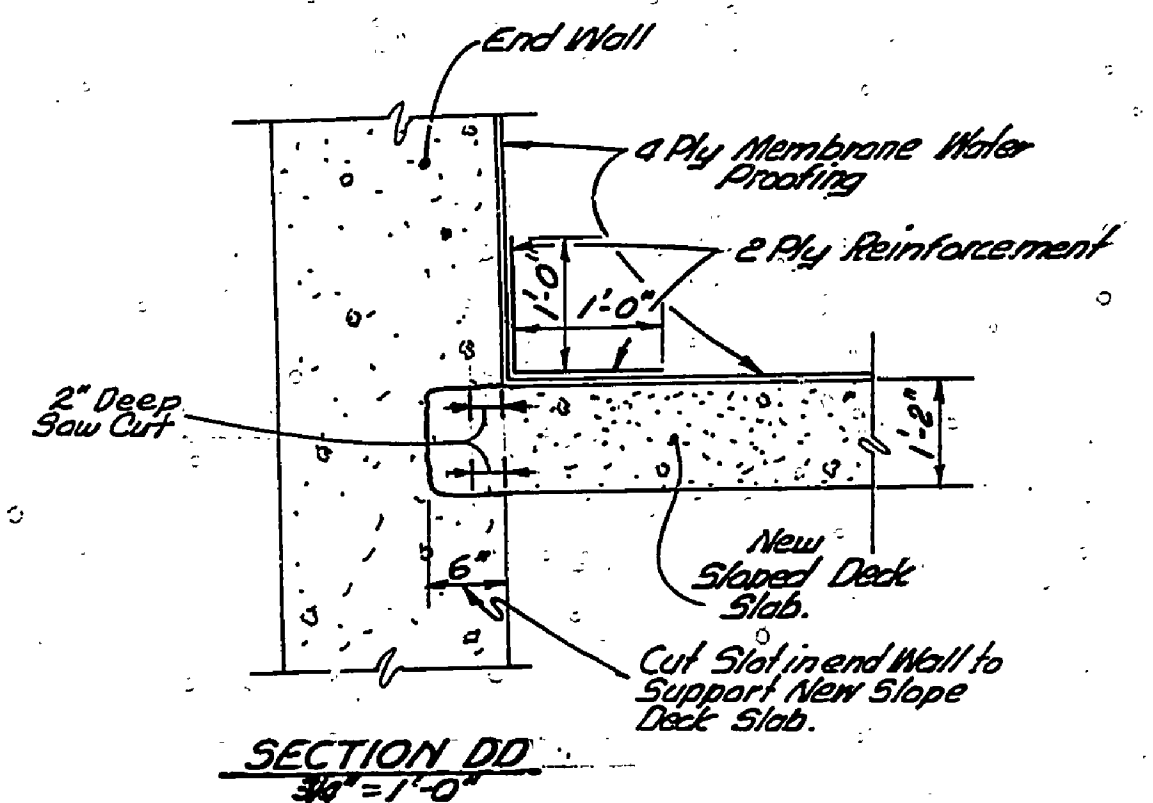
REIN. STEEL SCHEDULE FOR SLOPE DECK WALL ONLY

STRAIGHT BARS			
No.	SIZE	LENGTH	MARK
32	#7	19'-6"	51
32	#5	19'-6"	32
40	#5	21'-8"	53

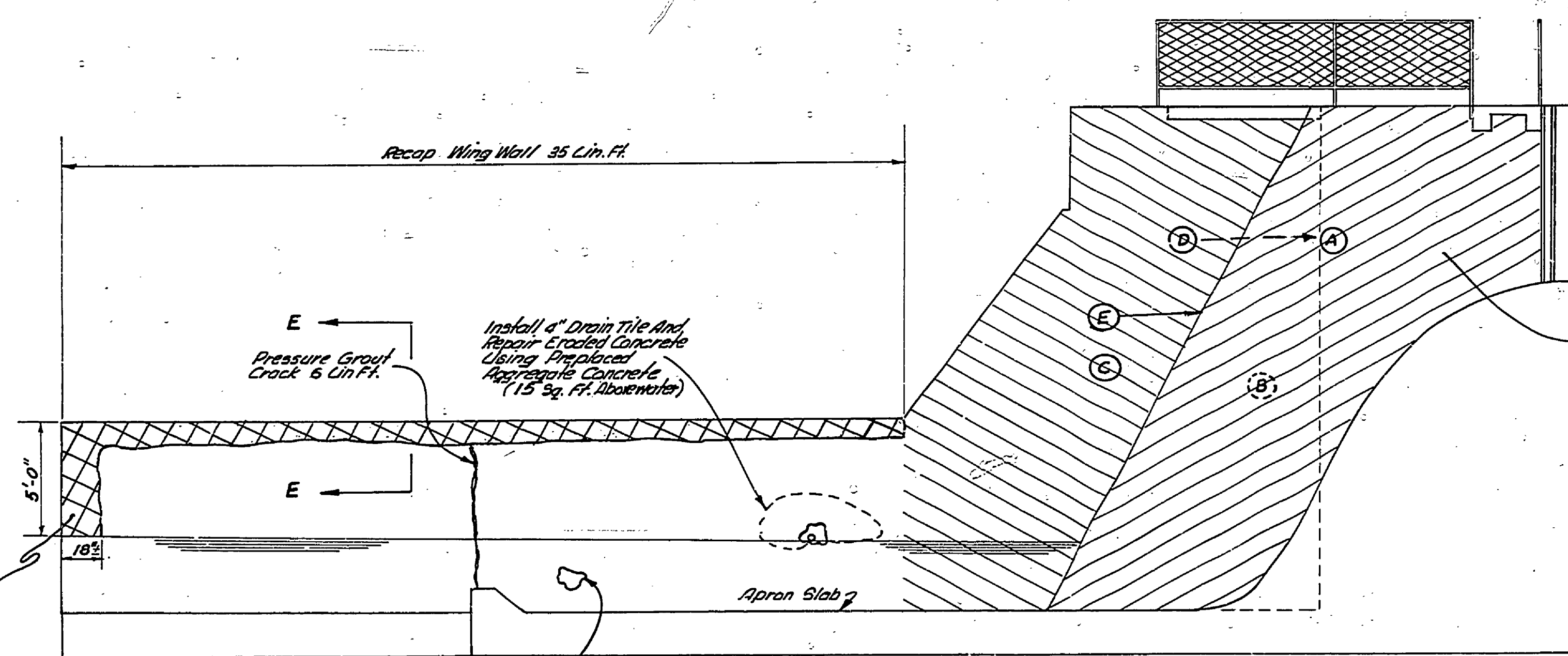
- NOTES:**
1. All Exposed Edges and Corners are to be Chamfered $\frac{3}{16}$ "
 2. All Reinf. to be Intermediate Grade Deformed Bars.
 3. Reinf. Shall be Lapped a Minimum of 24 Bar Diameters at Splices.



SECTION EE
1/4" = 1'-0"



SECTION DD
3/8" = 1'-0"

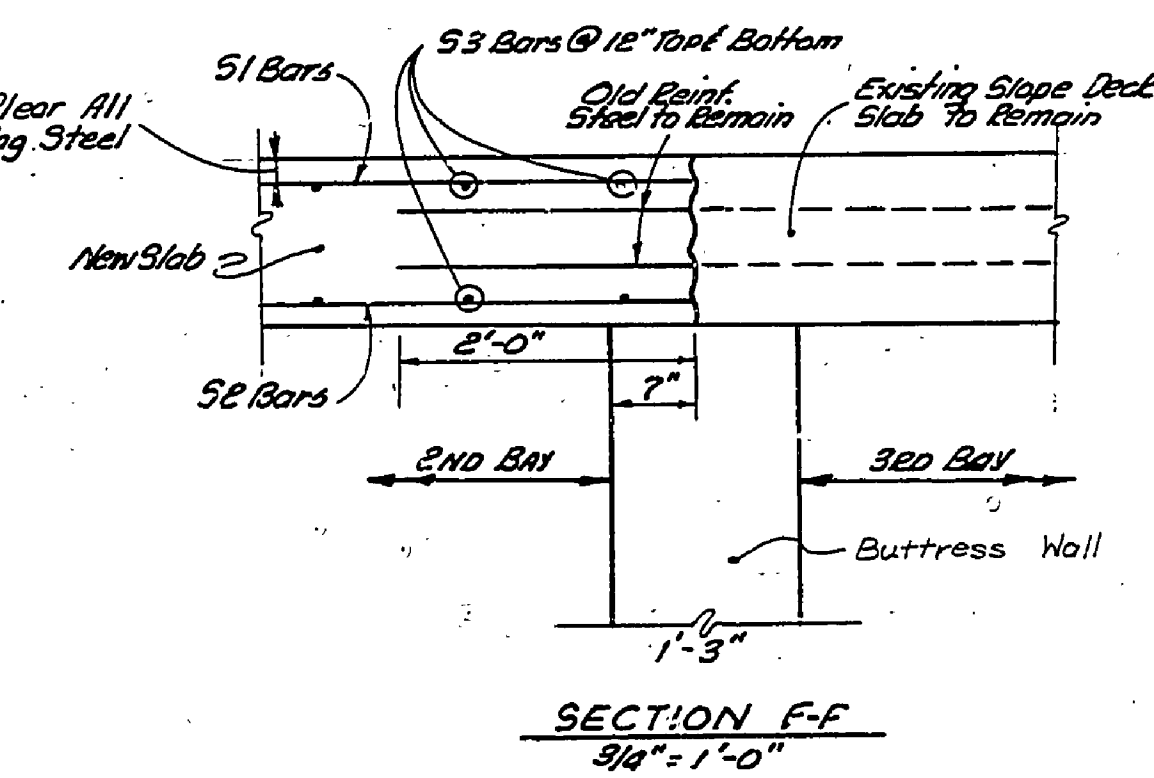


SECTION AA
Not to Scale

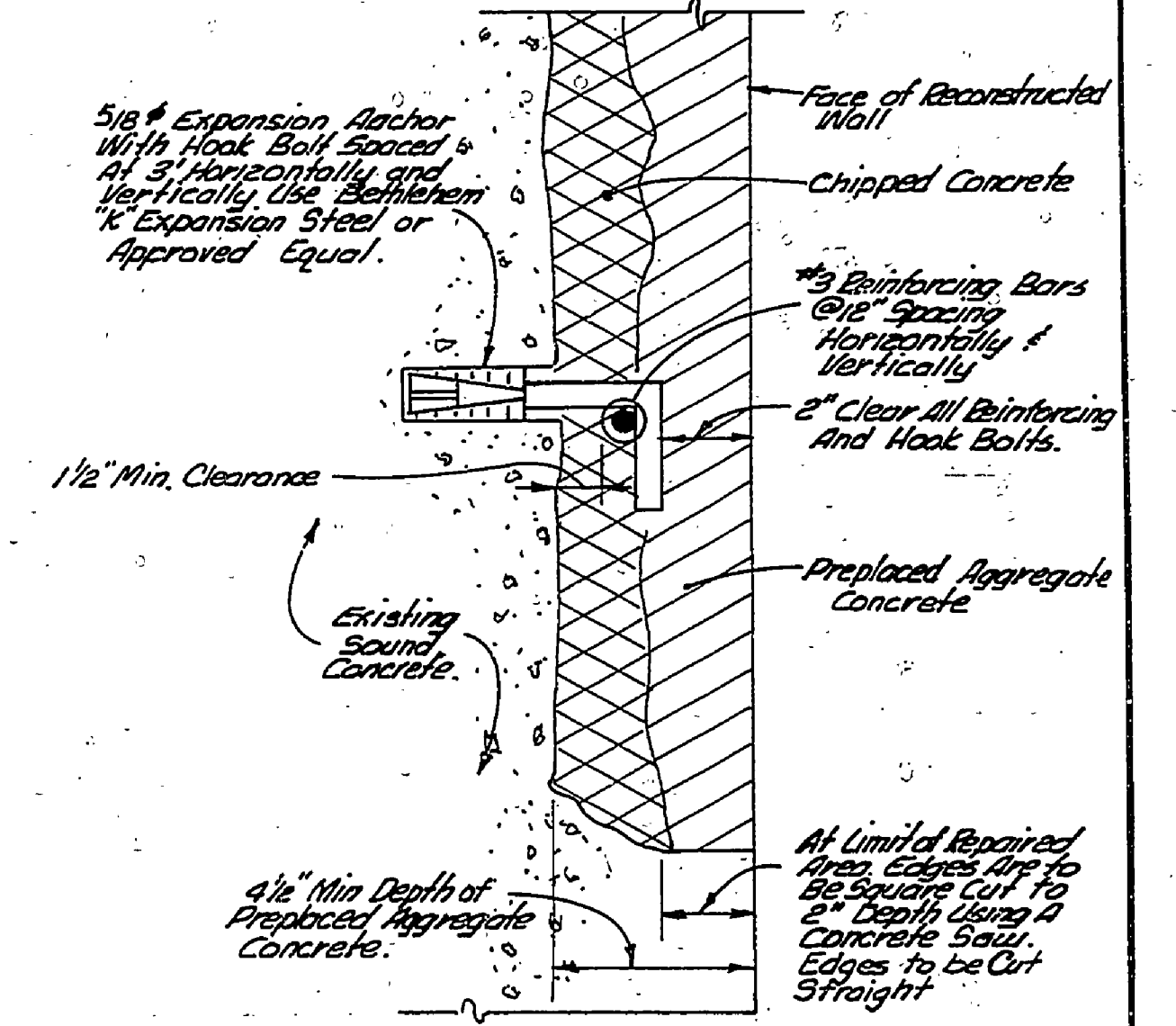
Remove Unsound Concrete and Replace Using Preplaced Aggregate Concrete On All Vertical Wall Faces from Apron Slab to Top of Apartment Where Indicated by Cross Hatching and on the Plan of Structure (See Detail of Typical Concrete Repair)

SECTION AA QUANTITIES

Location	Area Sq. Ft.	Area Sq. Ft.
A	180	35
B	80	45
C	290	85
D	95	25
E	60	15
TOTALS	705 Sq. Ft.	205 Sq. Ft.



SECTION FF
3/4" = 1'-0"



DETAIL OF TYPICAL OF CONCRETE REPAIR
3/4" = 1'-0"

SURVEYED BY	DRAWN BY	NO.	DATE	BY	REVISIONS	NO.	DATE	BY	REVISIONS
DESIGNED BY R. HAEUSLER	J. LEMMON	10-69	1.			3.			
	CHECKED BY	DATE	2.			4.			

MICHIGAN DEPARTMENT OF NATURAL RESOURCES	DETAILS OF DAM REPAIR	AREA OR PARK LUDINGTON STATE PARK	PROJECT NO. 1053
		PROJECT REPAIR TO HAMLIN LAKE DAM	SHEET 3 OF 3
			PLAN NO. E-129

Work this sheet with sheet No. 2.