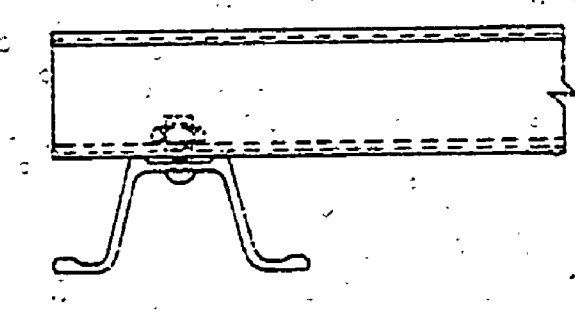
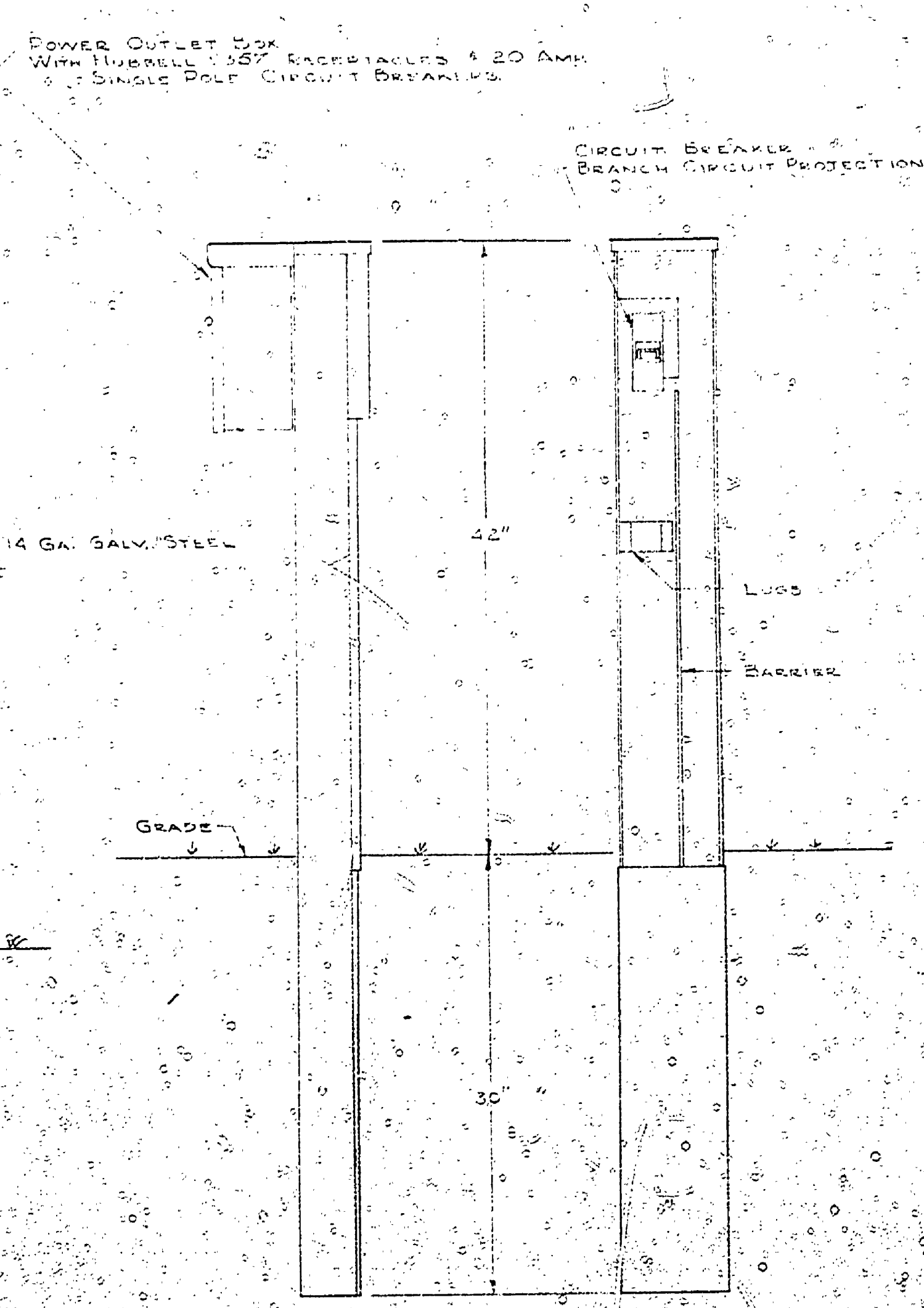


ENTRANCE RACK
WITH METER SOCKET & CIRCUIT BREAKER PANEL BOARD

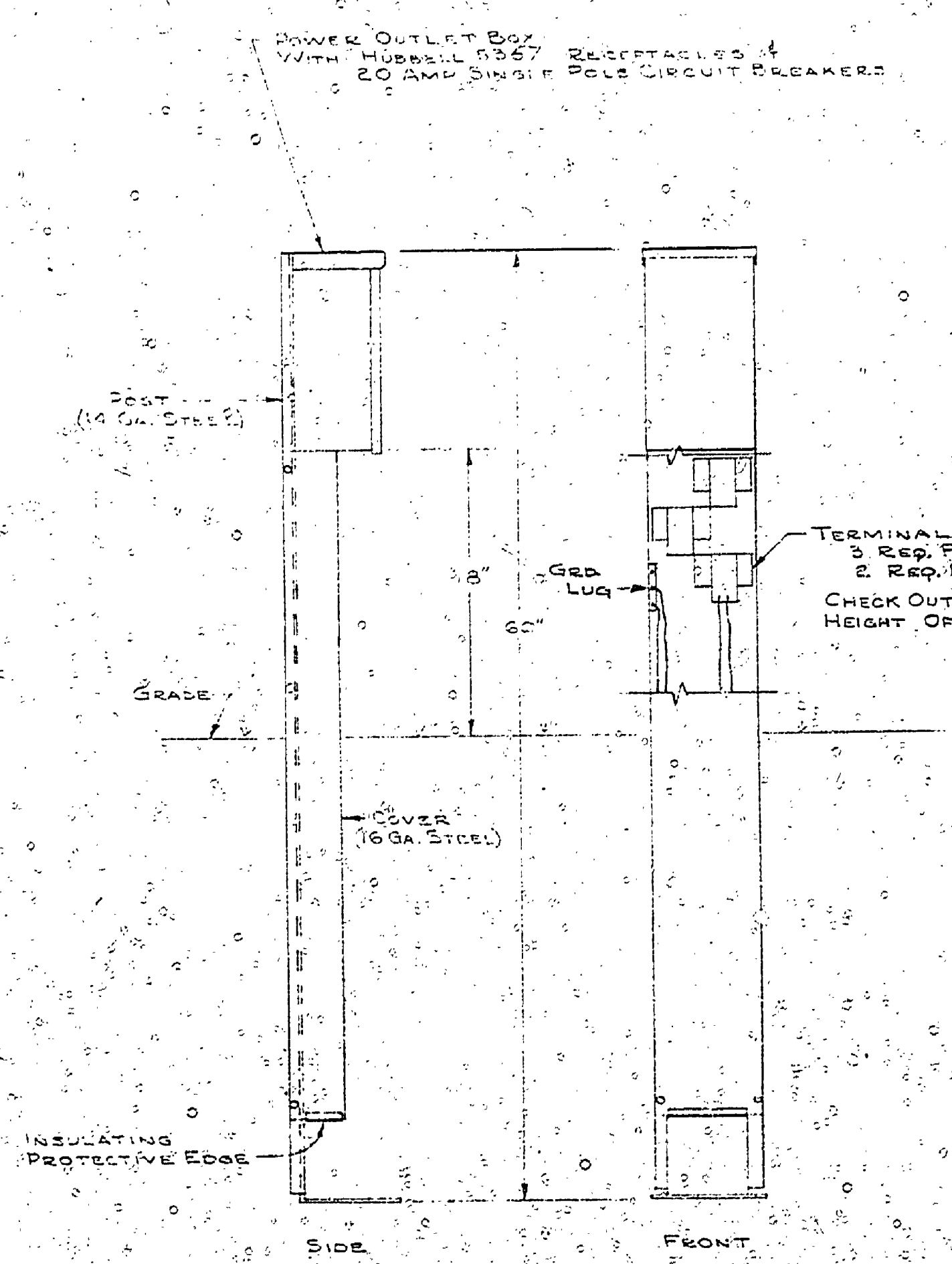
NOTE: GROUND ELECTRICAL SYSTEM AT DISTRIBUTION PANELBOARD TO NEAREST BURIED WATER PIPE.



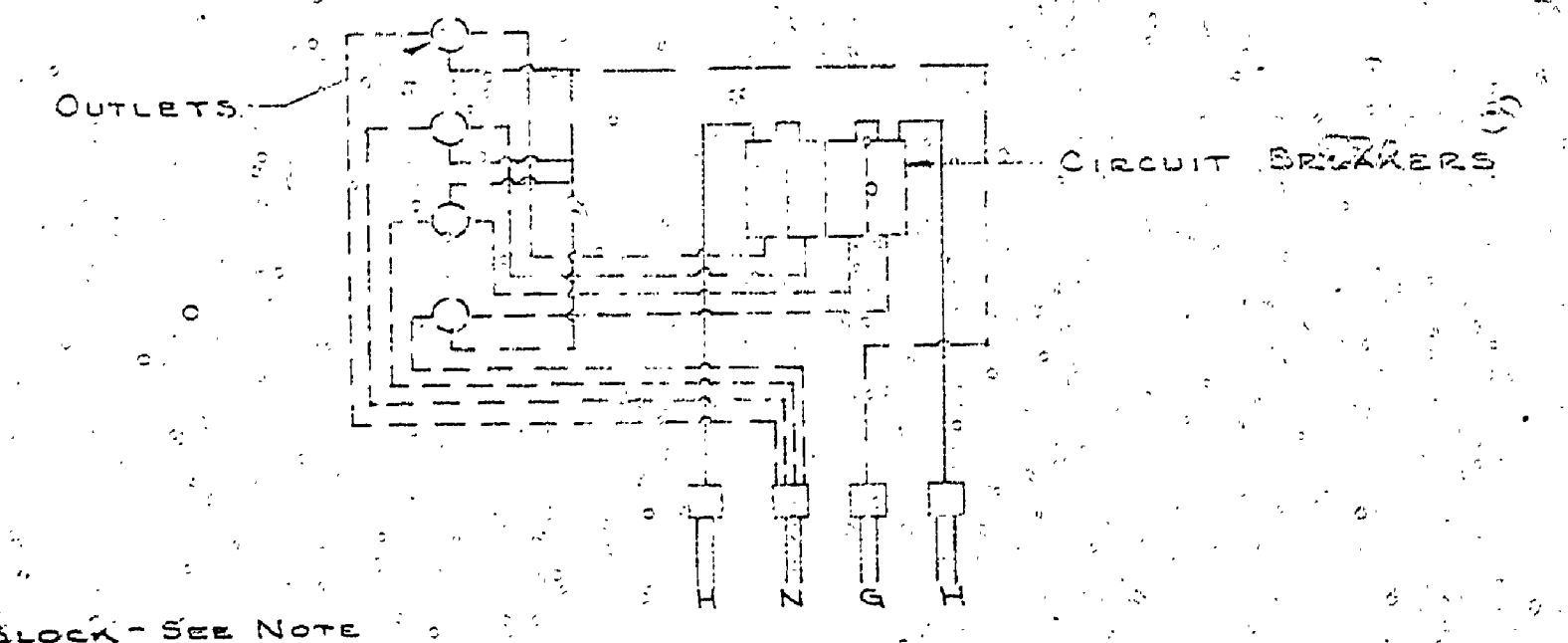
SECTION A-A
NO SCALE



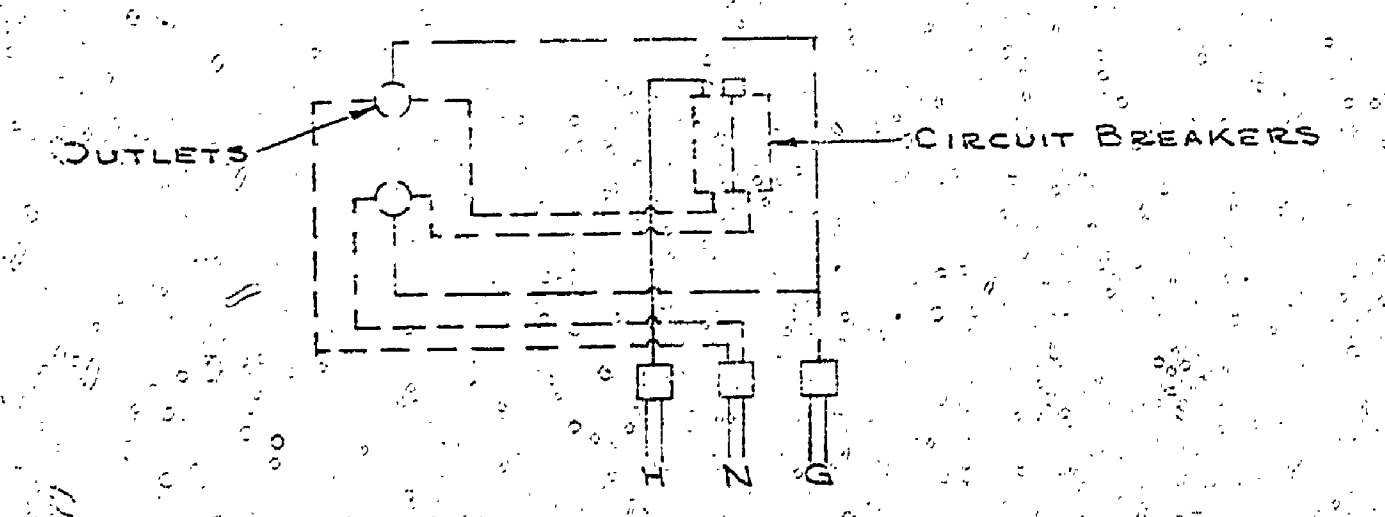
JUNCTION POST
WITH OUTLET BOX & BRANCH CIRCUIT PROTECTION



MOUNTING POST
WITH OUTLET BOX



WIRING DIAGRAM FOR JUNCTION POST



WIRING DIAGRAM FOR MOUNTING POST

NOTE: THESE POSTS ARE DESIGNED TO PERMIT LOOPING OF CABLE FROM ONE UNIT TO THE NEXT. SPLICING TO BE DONE IN POST. LUGS ARE PROVIDED TO RECEIVE UP TO #10 WIRES. GROUND IS BACK TO EQUIPMENT GROUND PROVIDED ON POST.

DESIGNED BY W. J. BERRY		DRAWN BY J. YEMA & P. HARRY		AUG. '66		NO. DATE BY		REVISIONS		NO. DATE BY		REVISIONS		MICHIGAN DEPARTMENT OF CONSERVATION		STANDARD PLAN UNDERGROUND SECONDARY FOR CAMPGROUND		SHEET NO. OF FOR PROJECT NO. 02-5511		LUDINGTON STATE PARK SHEET 2 OF 2 PLAN NO. E-132	
DATE		CHECKED BY		DATE		1. 4-17-68 J.Y.		WIRING DIA. REV. TERMINAL BLOCK AND CONDUIT BUSHING ADDED		3.											
						2. 11-27-68 J.Y.				4.											