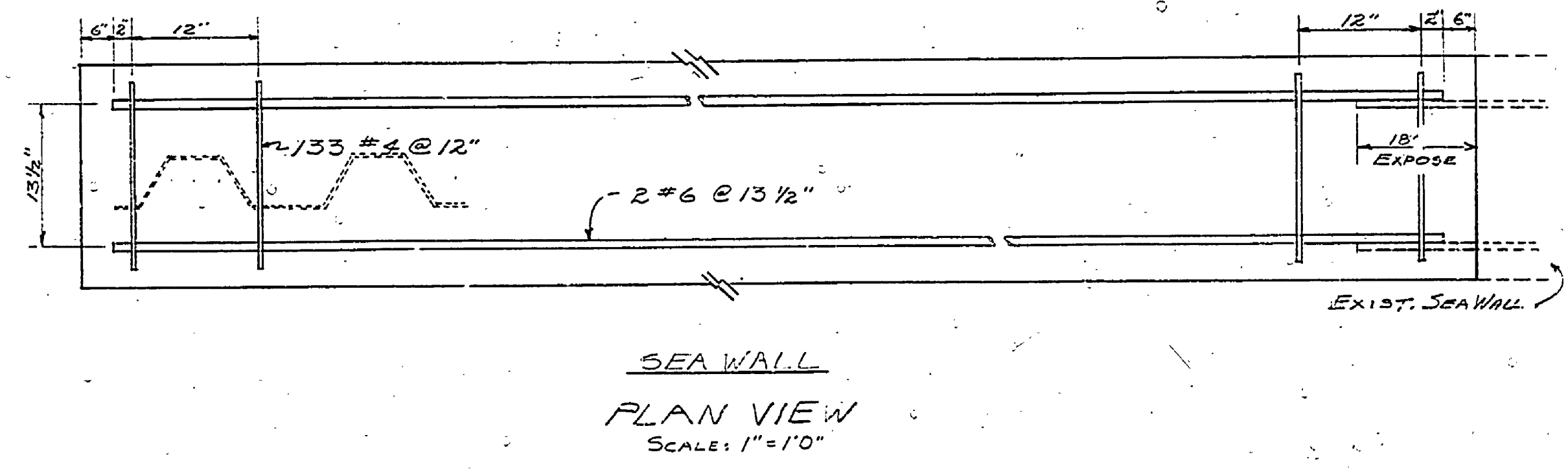
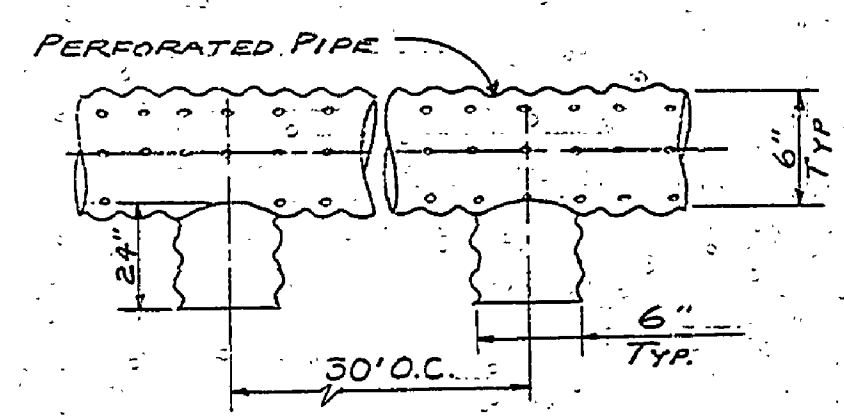
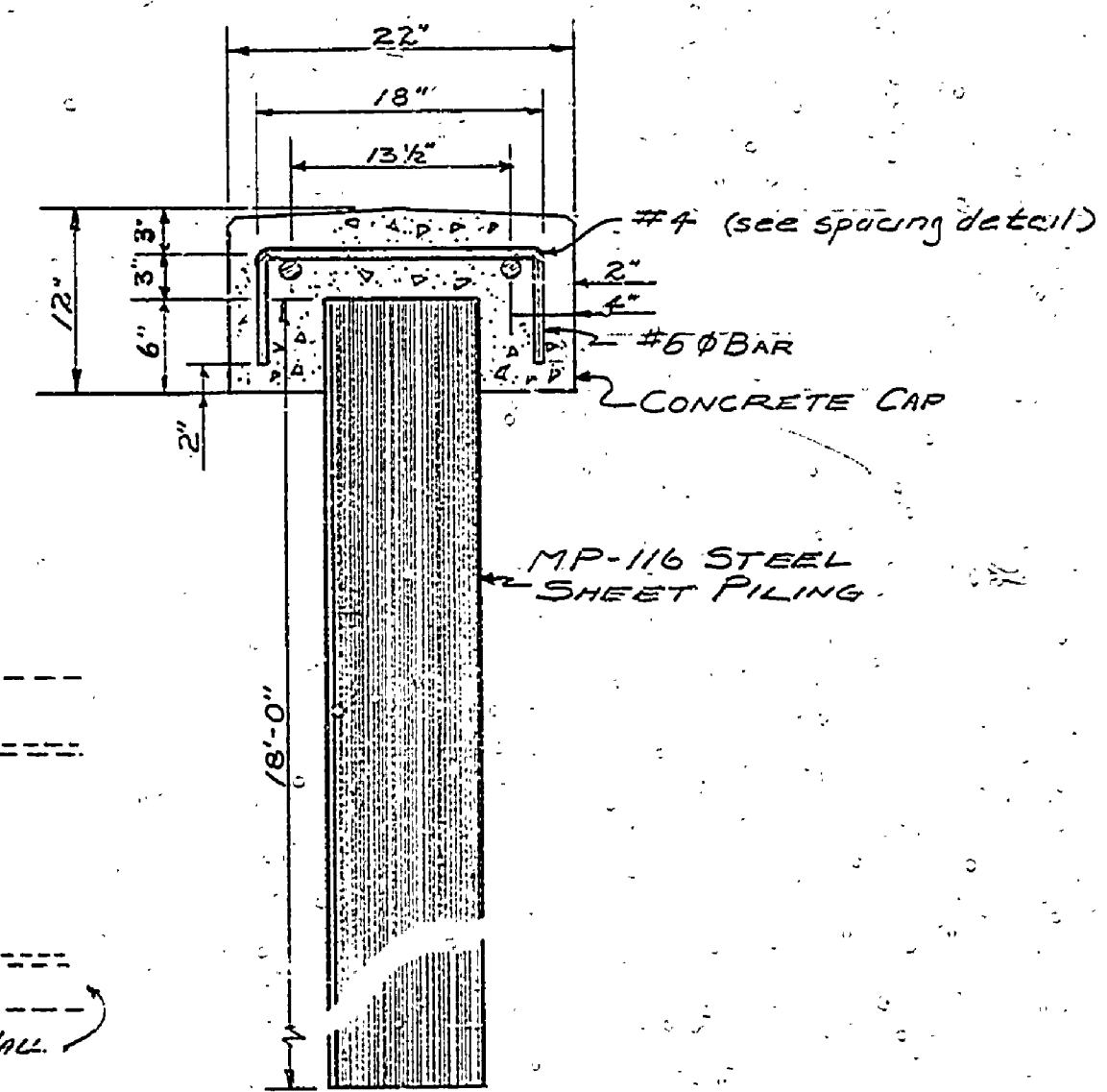
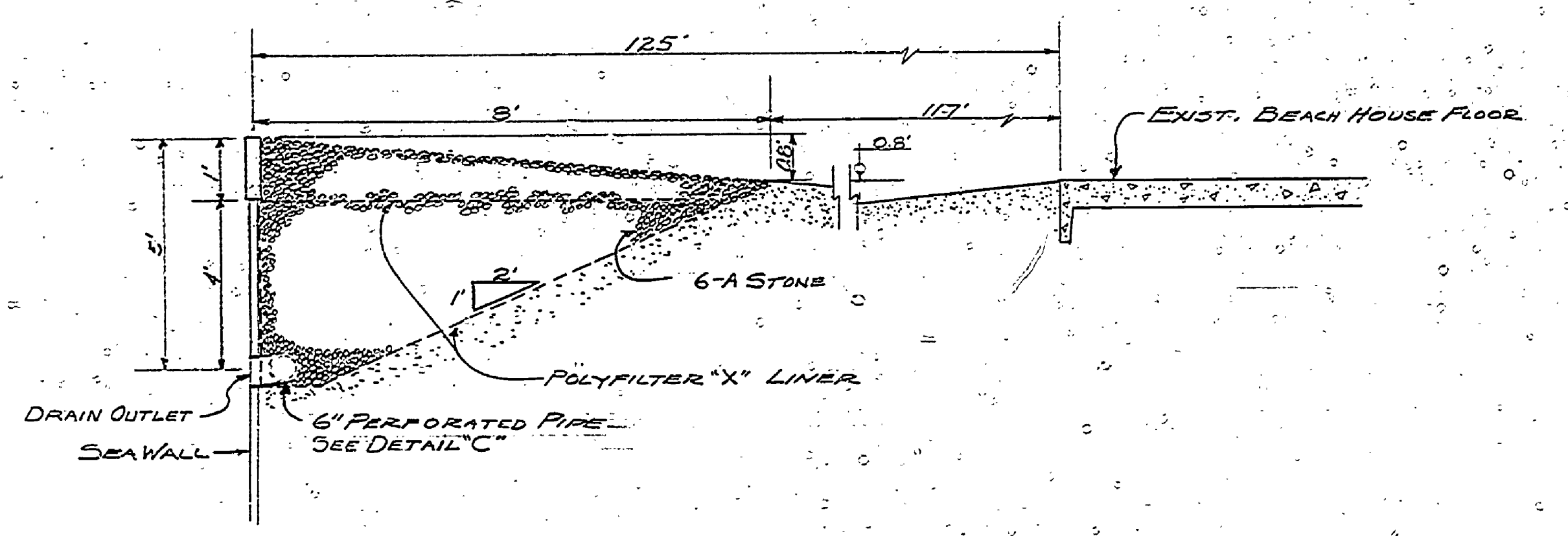
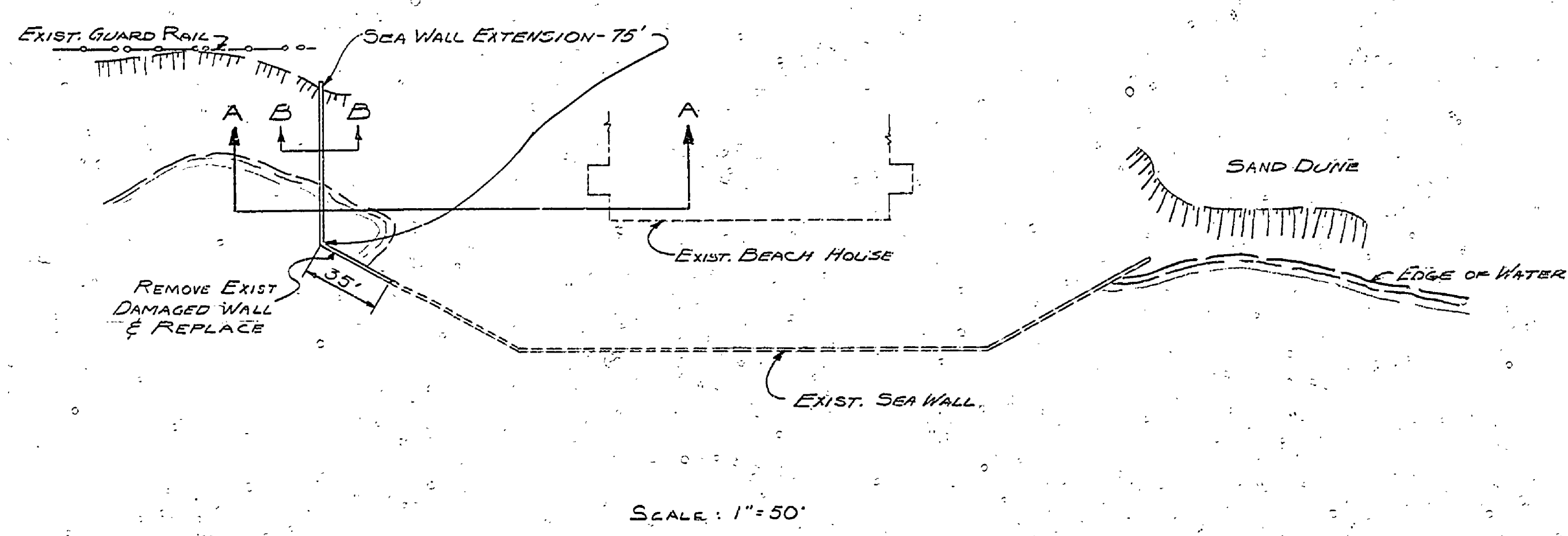
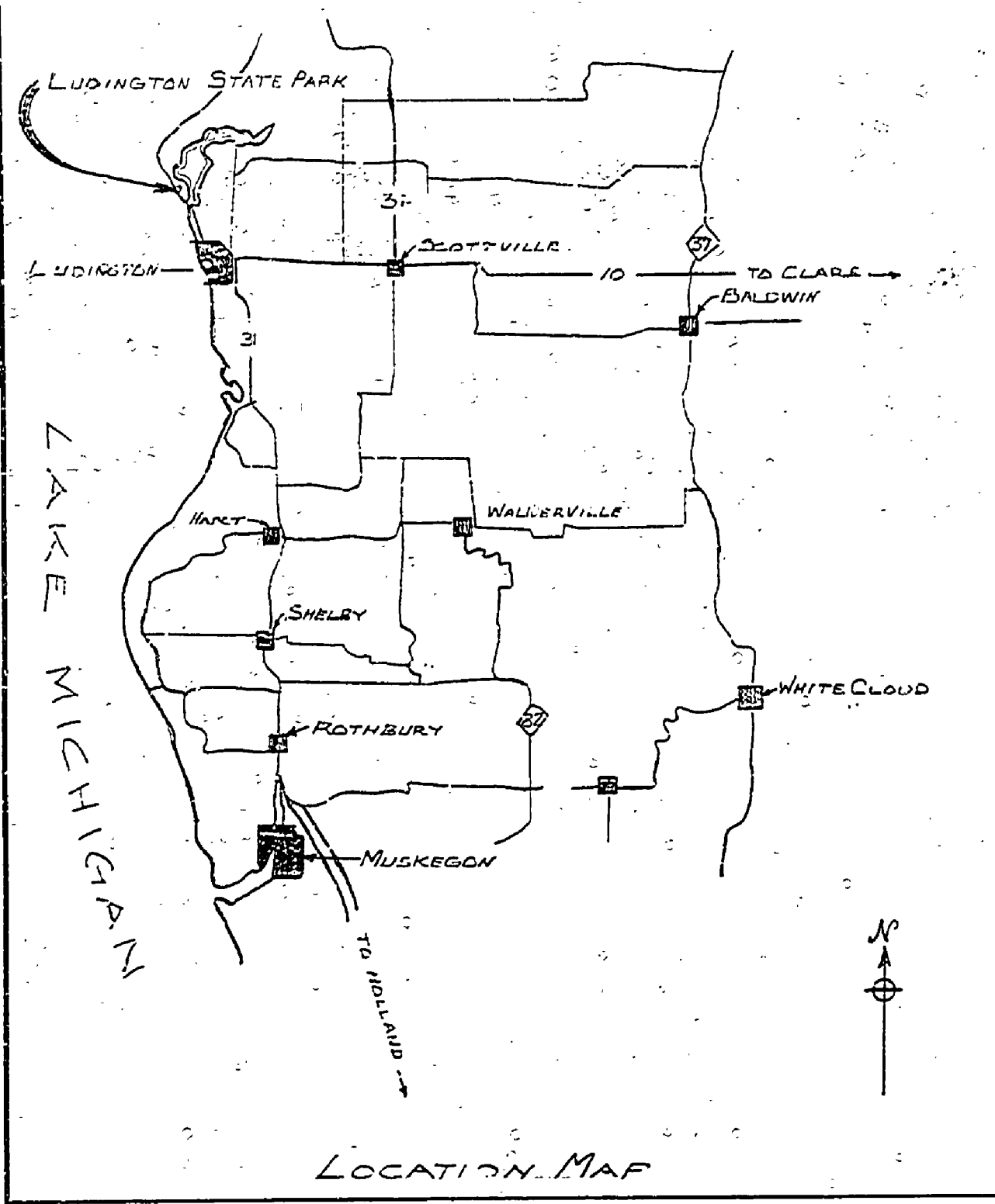


LUDINGTON STATE PARK SEAWALL EXTENSION PROJECT NO. 12-1288



BUILDING COMMITTEE APPROVAL	
BY: _____	DATE: _____
RECOMMENDED FOR APPROVAL <i>R.E. Baker</i> 4-25-72	
ENGINEERING OR ARCHITECTURAL SUPERVISOR DATE	
RECOMMENDED FOR APPROVAL <i>E.P. Patel</i> 5-1-72	
PROGRAM AND PLAN COORDINATOR DATE	
DIVISION/REGION APPROVAL	
BY: <i>R.J. Schmidt</i> 6-1-72	DATE
ENGINEERING DIVISION	
APPROVAL: <i>H. ...</i> 6-2-72	DATE
CHIEF ENGINEER	

SURVEYED BY <i>L.W. Smith</i>	2-72	DRAWN BY <i>L.W.S.</i>	3-72	NO.	DATE	BY	REVISIONS	NO.	DATE	BY	REVISIONS	MICHIGAN DEPARTMENT OF NATURAL RESOURCES	SEAWALL EXTENSION SHEET TITLE	AREA OR PARK <i>LUDINGTON S.P.</i>	PROJECT NO. <i>12-1288</i>
DESIGNED BY <i>L.W.S.</i>	3-72	CHECKED BY		1.				3.						PROJECT <i>BEACH EROSION CONTROL</i>	SHEET NO. OF 1 PLAN NO. <i>E-13A</i>
DATE		DATE		2.				4.							