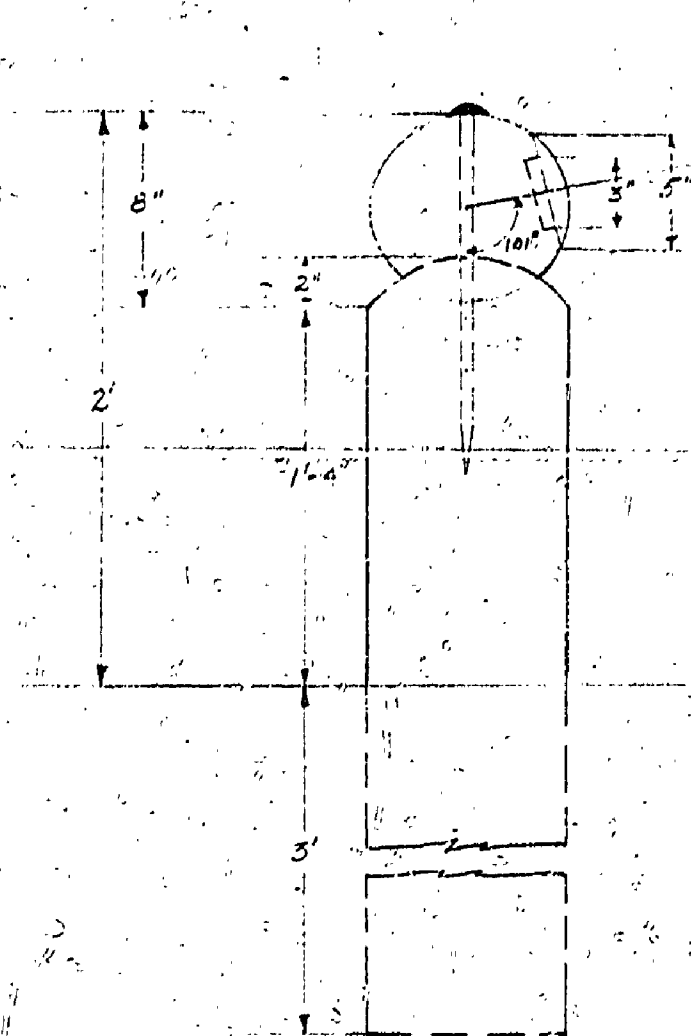


DIRECTIONAL SIGN
SPECIFICATIONS

Logs - 8" Oak or Pine - Bark removed, knot stubs retained.
Color - Creosote stained weathered gray (except sign panel)
Sign Legs - 5' or more long, depending on length of title.
LETTERING - Burned in 1/2" deep, with iron stencils.
Letters painted orange-red color.
SIGN PANEL - Retains its natural color, is painted with spar varnish, after lettering is completed.
DRIFT PIN - 1/2" x 16" (iron)
Color Ball - Each major trail in the park will be indicated by a different color shown on the sign & guide post by an incised color ball.
LOCATION - The Directional Sign will appear only at the beginning of end of the trail, which bears its name.
QUANTITY - 40 Signs



CROSS SECTION



DIRECTIONAL SIGN

ELEVATION

SCALE - 1/2" = 1'



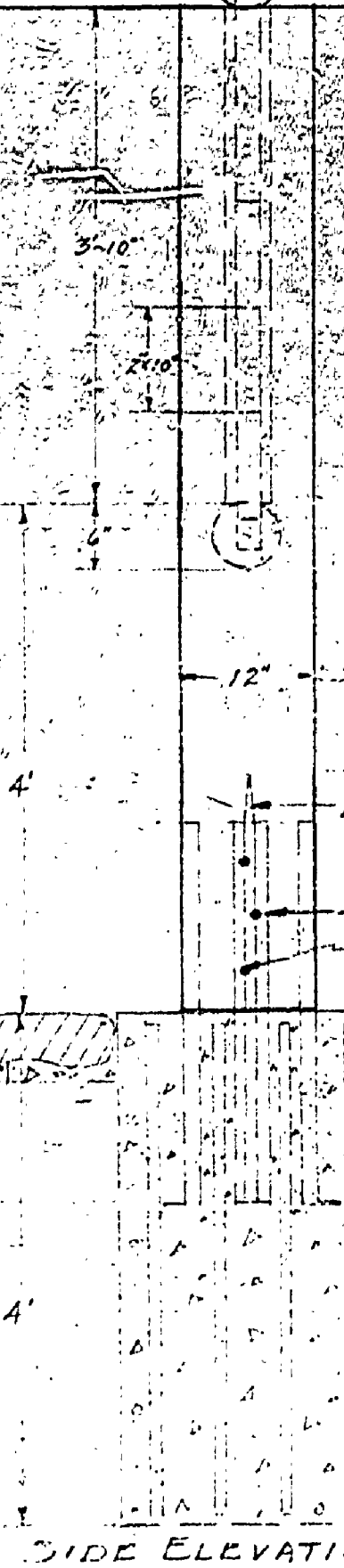
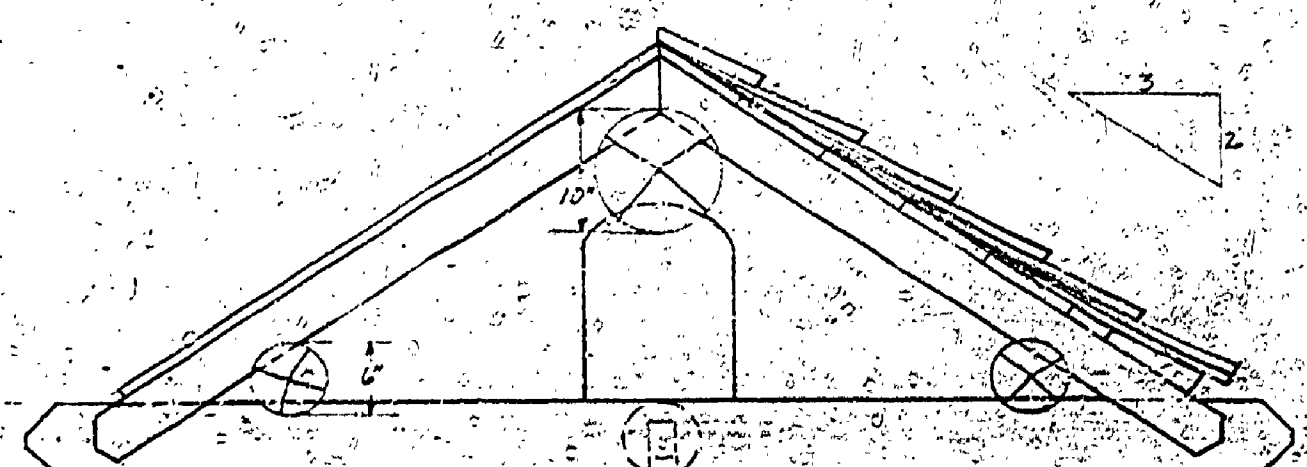
COLOR BALL GUIDE POST

The Guide Post bears the Color Ball of the trail on one side, and a white Color Ball on the opposite or return side.

SPECIFICATIONS

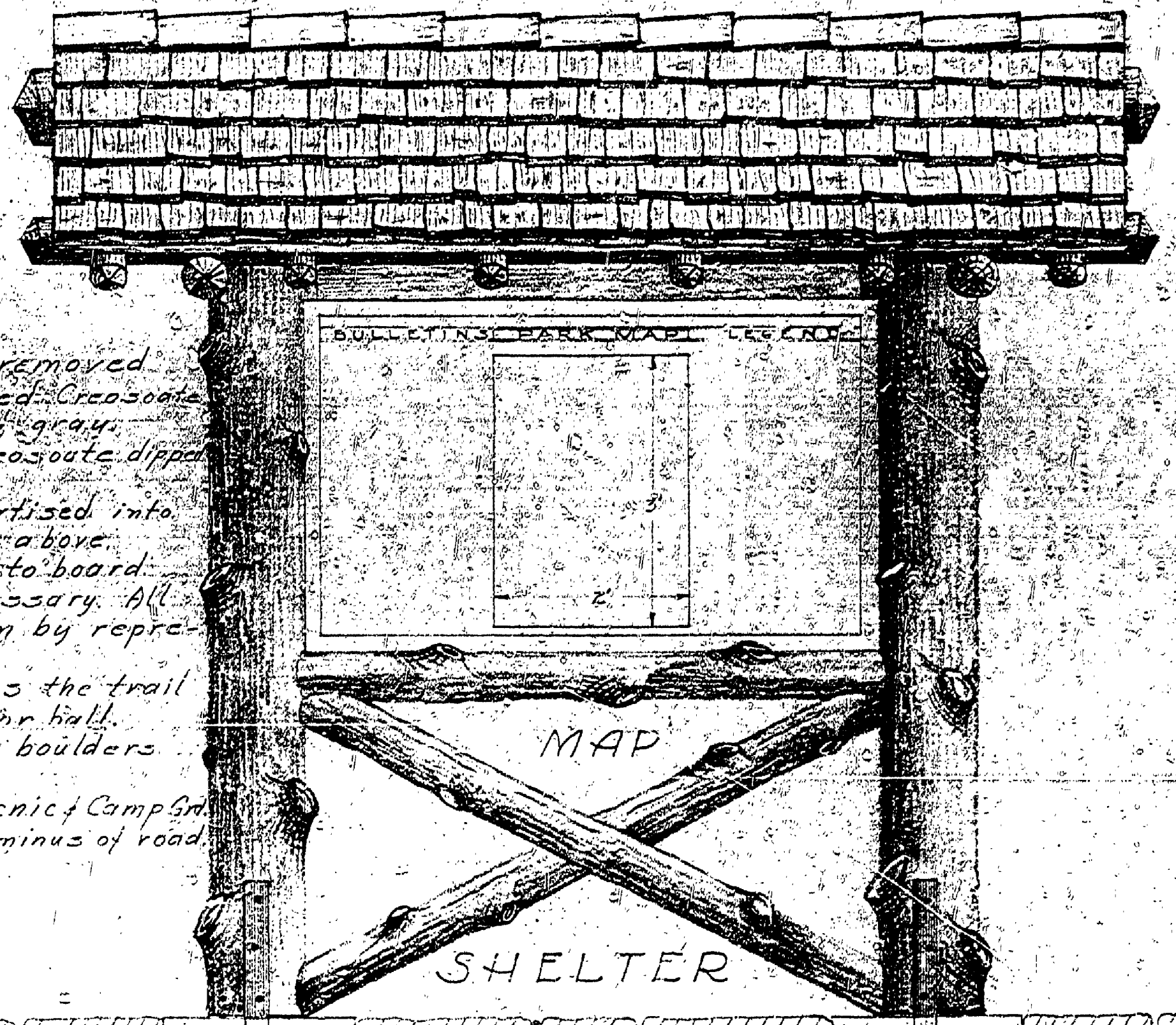
POST - 6" Oak - Bark removed, knot stubs retained. Creosote stained weathered gray.
Color Ball incised & painted appropriate color.
LOCATION - Between the beginning & end of trail, usually at intersections.
QUANTITY - 35 Guide Posts

SCALE - 1/2" = 1'



SIDE ELEVATION

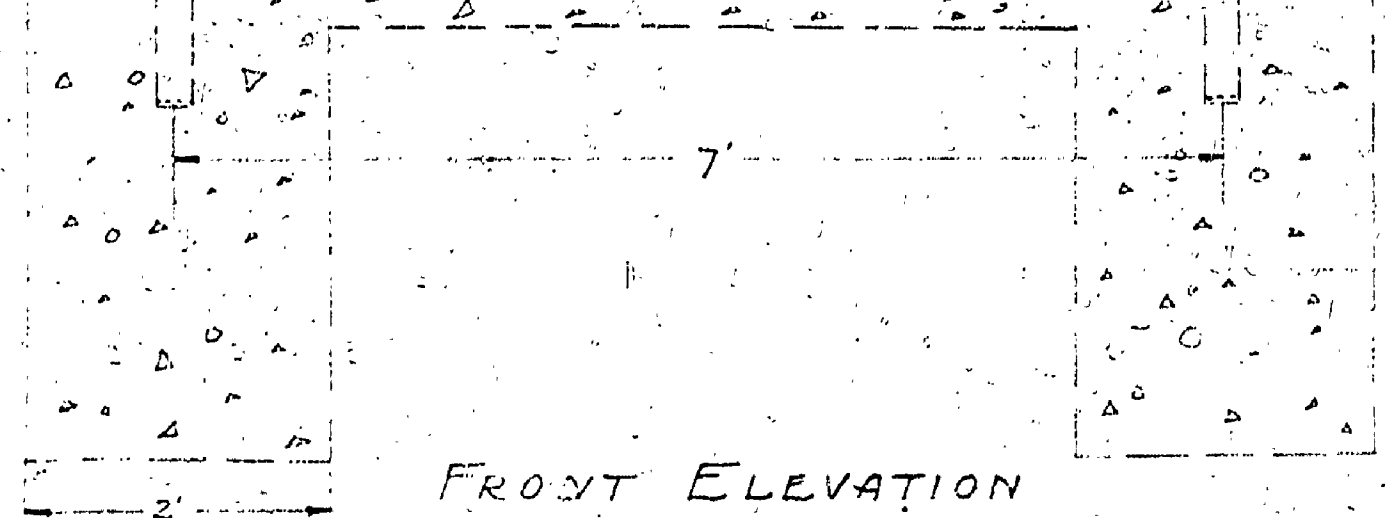
SPECIFICATIONS
Logs - Oak or Pine - bark removed - knot stubs retained - Creosote stained - weathered gray.
Sillings - Cedar or Pine - Creosote dipped - weathered gray.
Map Board - 1/2" x 16" Pine - Mortised into frame - stained - weathered gray.
Park Map - Map is posted to board. Renewed when necessary. All major trails shown by representative colors.
The Legend contains the trail index - name & color ball.
FLAGSTONE - Split granite boulders set in concrete.
LOCATION - One for each Picnic & Camp Site, one in oval at terminus of road.



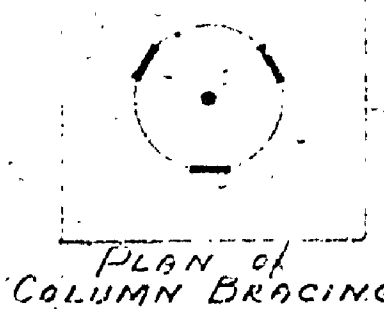
MAP

SHELTER

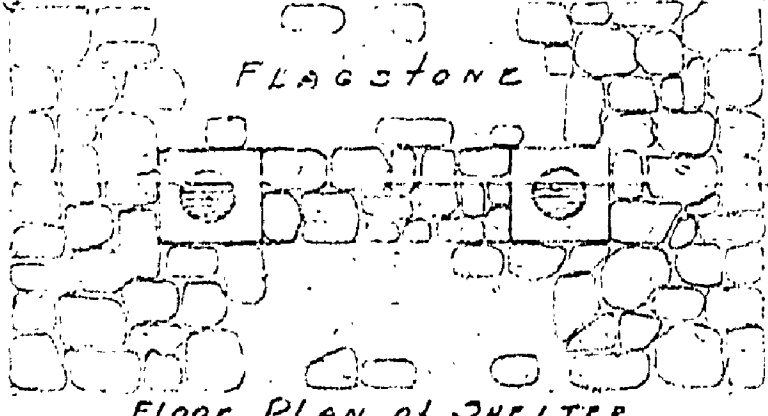
SCALE - 3/4" = 1'



FRONT ELEVATION

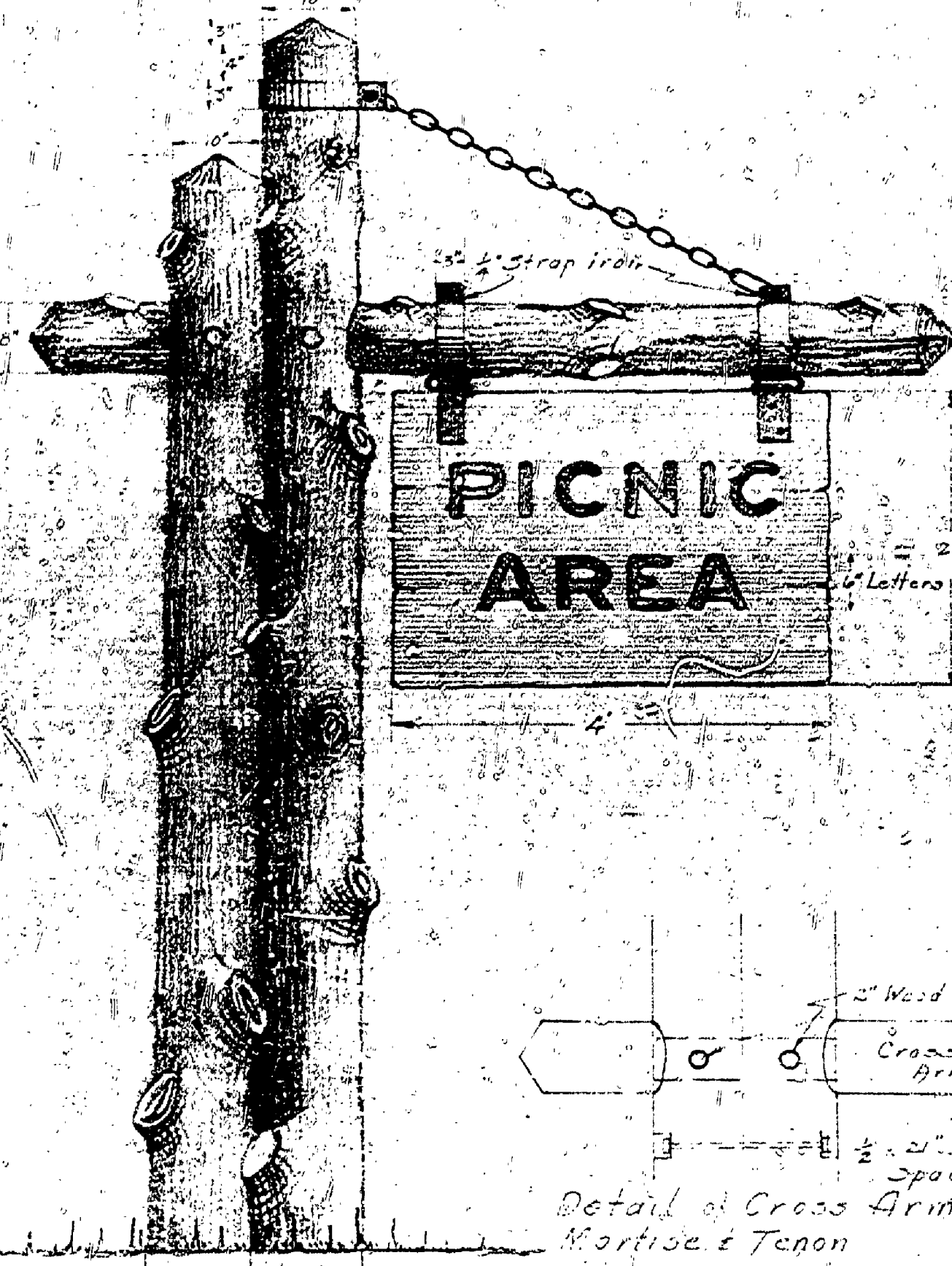


PLAN OF COLUMN BRACING



FLOOR PLAN OF SHELTER

SCALE - 1/2" = 1'

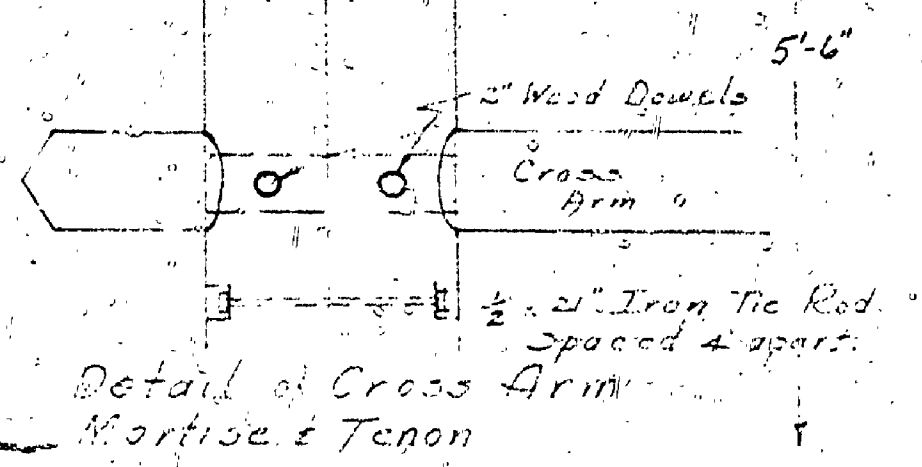


A SUSPENDED SIGN

SPECIFICATIONS

Logs - Oak or Pine - knot stubs retained - Bark removed - Creosote stained - weathered gray.
SIGN - 2 1/2" x 4" Pine - braced by 2x2" strap iron & bolts. Sign supported by U-bolts.
Creosote stained - weathered gray.
LETTERS - 1" wide 1/2" high - burned in & painted orange-red color.
LOCATION - One for each Picnic & Camp Area.

SCALE - 3/4" = 1'



Detail of Cross Arm - Mortise & Tenon

MICHIGAN
DEPARTMENT OF CONSERVATION
IN COOPERATION WITH
UNITED STATES
DEPARTMENT OF THE INTERIOR
NATIONAL PARK SERVICE

DESIGNED BY: R.H. LUDINGTON STATE PARK
REVISION BY: R.H. LUDINGTON STATE PARK
CHECKED BY: R.G.M.
PREPARED AND APPROVED BY: [Signature]
ANNOUNCED: [Signature] INSPECTOR DATE: 3/10/32

PLAN: 100-400-1
SCALE: 1/2" = 1'
DESIGNATION OF CAMP: S.P. 2
DATE: 3/10/32

SIGNS & MARKERS
JOB - 61