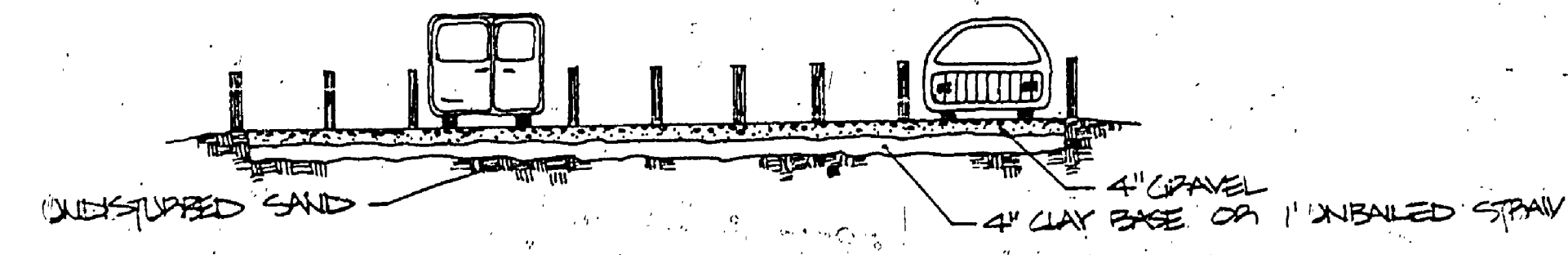
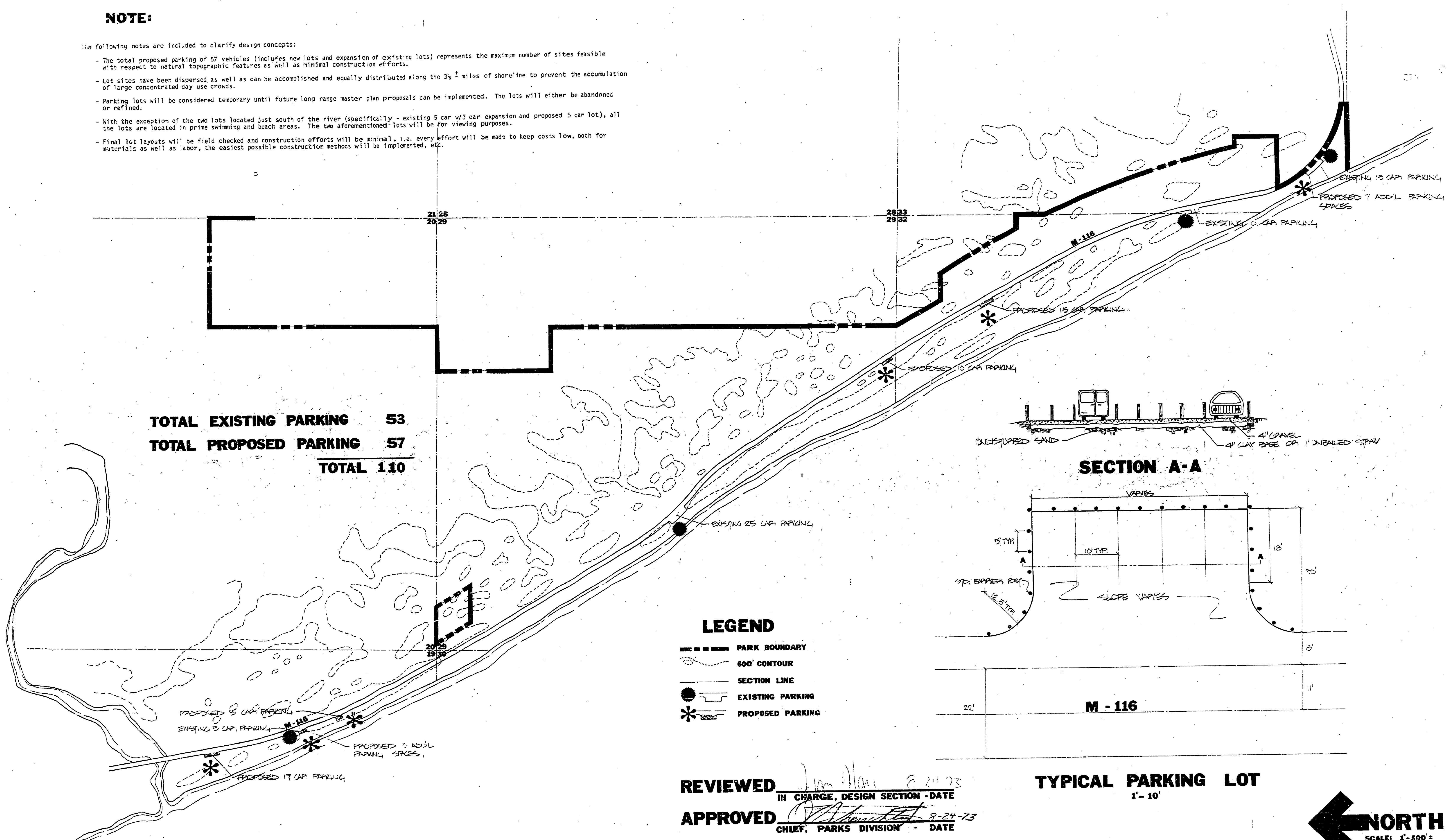


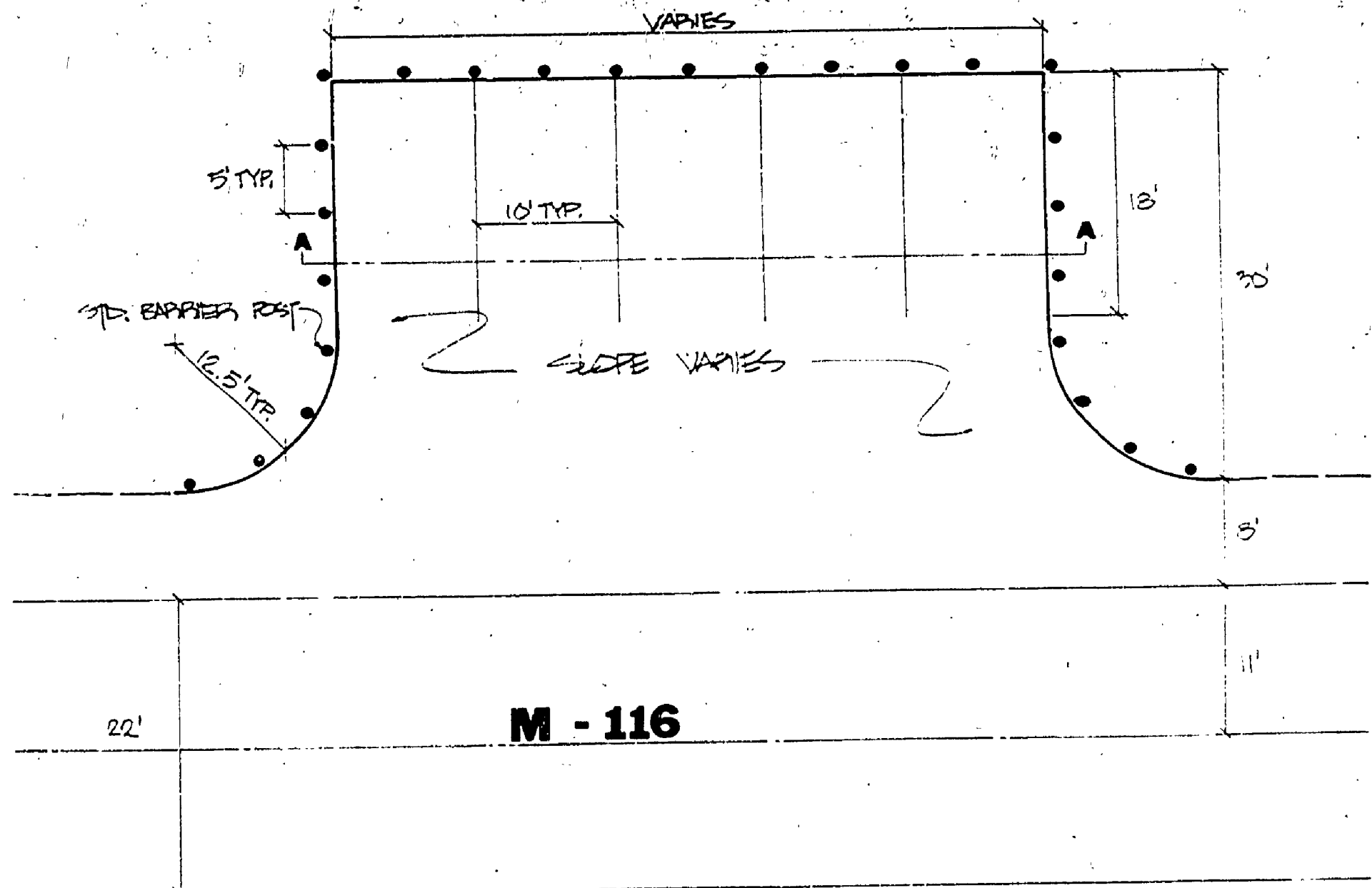
NOTE:

- The following notes are included to clarify design concepts:
- The total proposed parking of 57 vehicles (includes new lots and expansion of existing lots) represents the maximum number of sites feasible with respect to natural topographic features as well as minimal construction efforts.
 - Lot sites have been dispersed as well as can be accomplished and equally distributed along the 3 1/2 miles of shoreline to prevent the accumulation of large concentrated day use crowds.
 - Parking lots will be considered temporary until future long range master plan proposals can be implemented. The lots will either be abandoned or refined.
 - With the exception of the two lots located just south of the river (specifically - existing 5 car w/3 car expansion and proposed 5 car lot), all the lots are located in prime swimming and beach areas. The two aforementioned lots will be for viewing purposes.
 - Final lot layouts will be field checked and construction efforts will be minimal, i.e. every effort will be made to keep costs low, both for materials as well as labor, the easiest possible construction methods will be implemented, etc.

TOTAL EXISTING PARKING 53
TOTAL PROPOSED PARKING 57
TOTAL 110



SECTION A-A

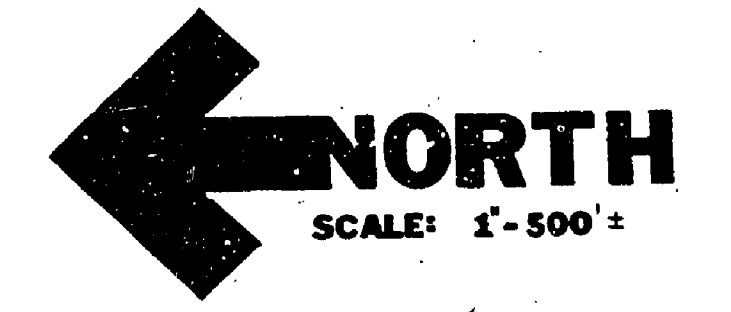


TYPICAL PARKING LOT
 1" = 10'

- LEGEND**
- PARK BOUNDARY
 - - - 600' CONTOUR
 - SECTION LINE
 - EXISTING PARKING
 - * PROPOSED PARKING

REVIEWED *Jim Han* 8-24-73
 IN CHARGE, DESIGN SECTION - DATE

APPROVED *[Signature]* 8-24-73
 CHIEF, PARKS DIVISION - DATE



DESIGNED BY R. RINCK		DRAWN BY PRICE		8-73		NO. DATE BY		REVISIONS		NO. DATE BY		REVISIONS		MICHIGAN DEPARTMENT OF NATURAL RESOURCES		Ludington State Park		M-6 PARKING	
DATE	8-73	CHECKED BY		NO.	DATE	BY		NO.	DATE	BY		NO.	DATE	BY				SHEET 1 OF 1	PLAN NO. L-134