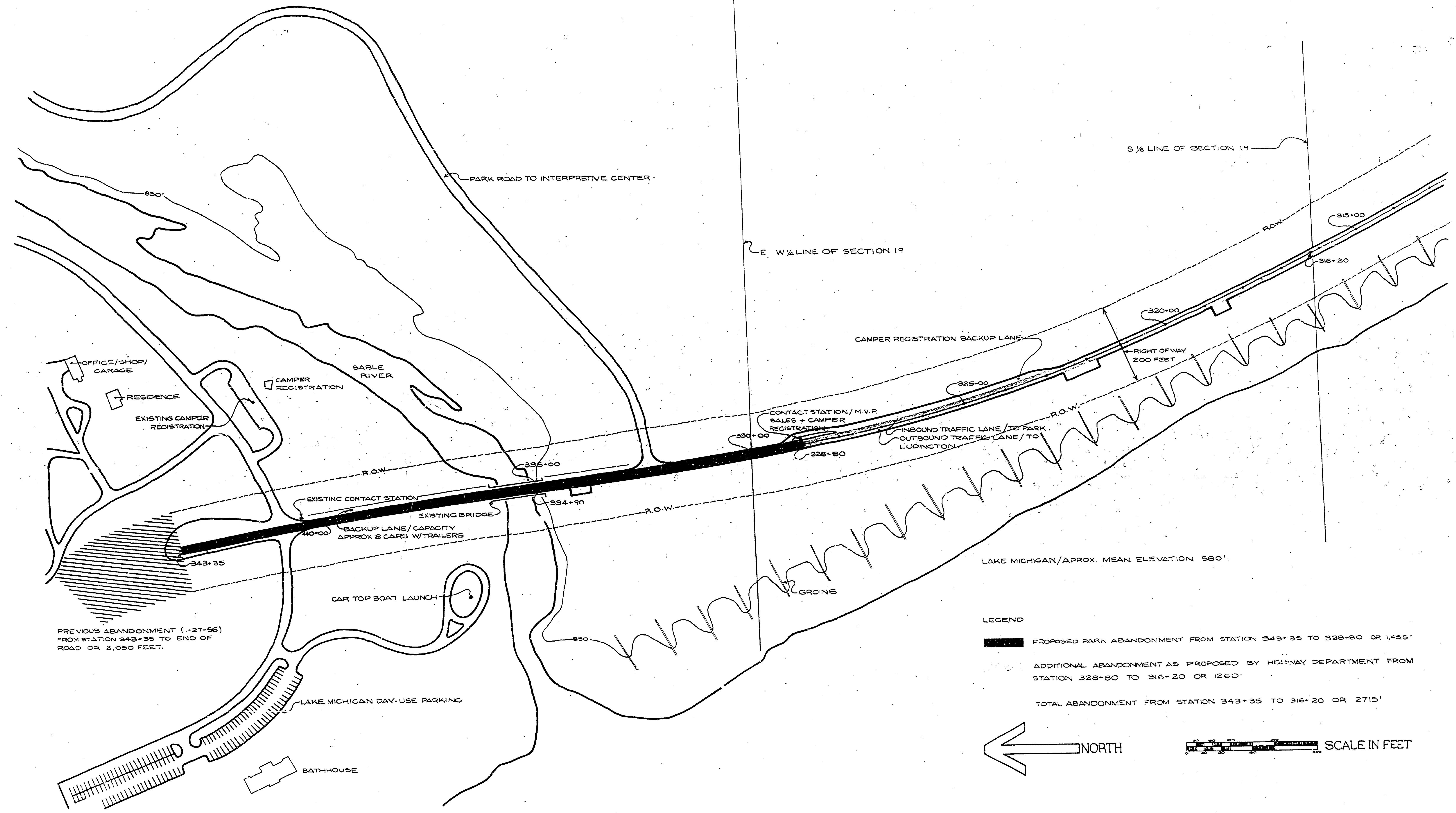


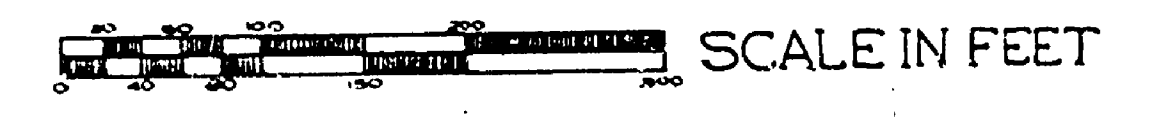
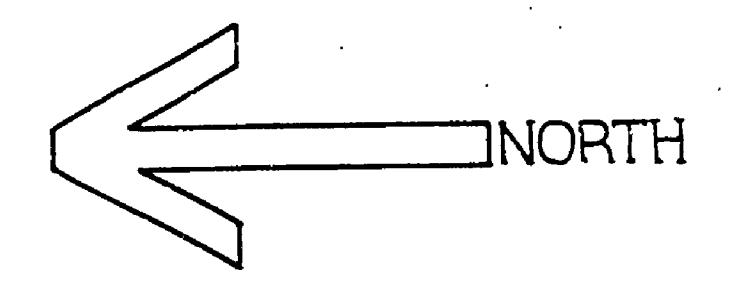
CENTER OF SECTION 19



LAKE MICHIGAN/APROX. MEAN ELEVATION 560'

LEGEND

- PROPOSED PARK ABANDONMENT FROM STATION 343+35 TO 328+80 OR 1,455'
- ADDITIONAL ABANDONMENT AS PROPOSED BY HIGHWAY DEPARTMENT FROM STATION 328+80 TO 316+20 OR 1,260'
- TOTAL ABANDONMENT FROM STATION 343+35 TO 316+20 OR 2,715'



SURVEYED BY	DRAWN BY P. STJART	NO. DATE BY	REVISIONS	NO. DATE BY	REVISIONS	MICHIGAN DEPARTMENT OF NATURAL RESOURCES	PROPOSED ABANDONMENT OF M-16 LUDINGTON STATE PARK SHEET TITLE	AREA OR PARK PROJECT	PROJECT NO.
DESIGNED BY	CHECKED BY	1. DATE		3. DATE					SHEET 1 OF 1 PLAN NO. R 1-3-74
		2. DATE		4. DATE					