

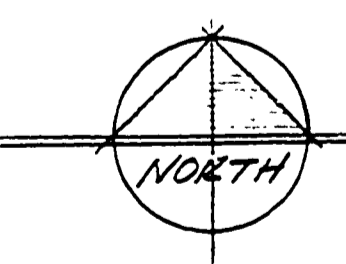
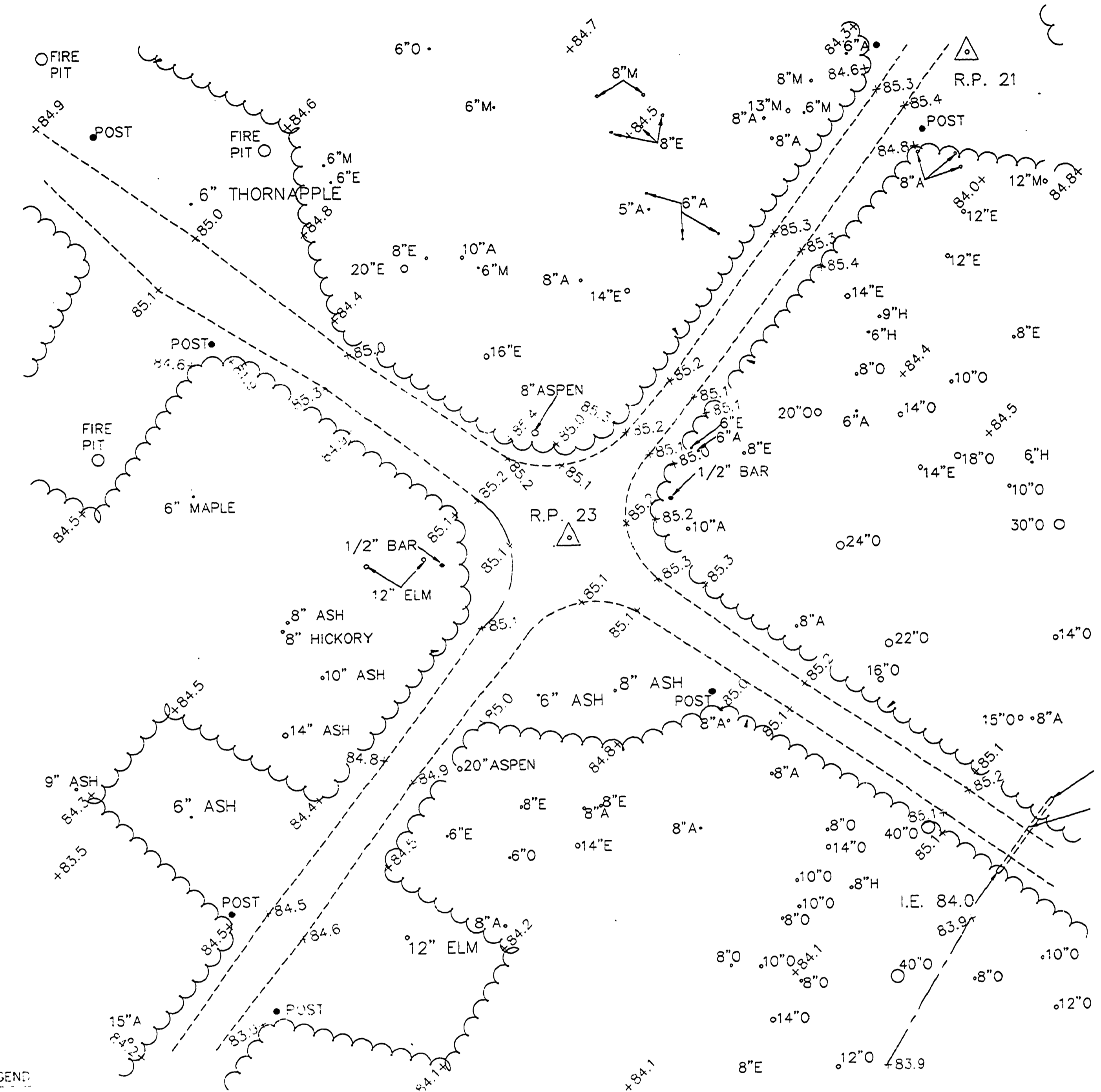
R.P. #	COORD'S	R.P. #	COORD'S
24	N 7183.04 E 3486.16	27	N 7057.88 E 3486.16
23	N 6887.80 E 3707.57	28	N 6665.44 E 3538.24
26	N 6744.78 E 3923.51	21	N 7023.33 E 3813.23
		13	N 2006.23 E 4269.75

WITNESSES TO R.P.

- R.P. #26 (1/2" BAR 5' EAST OF GRAVEL ON EAST-WEST ROAD)
SET NAIL AND TAG NORTH SIDE 18" ASH, WEST, 36.72'
SET NAIL AND TAG WEST SIDE 20" TWIN ASH, N20°E, 31.95'
 - R.P. #23 (1/2" BAR CENTERLINE OF N. E. S. & W. GRAVEL DRIVES)
SET NAIL AND TAG NORTHWEST SIDE 8" ASH, N80°E, 31.57'
SET NAIL AND TAG EAST SIDE 15" TWIN ASPEN, N10°E, 28.65'
 - R.P. #28 (1/2" BAR 5' SOUTH OF DRIVE ON EXTENDED CENTERLINE OF DRIVE TO THE NORTH)
SET NAIL AND TAG WEST SIDE 12" ELM, N80°E, 38.11'
SET NAIL AND TAG WEST SIDE 8" THORNAPPLE, S05°E, 9.30'
 - R.P. #27 (1/2" BAR 5' WEST GRAVEL ON EAST-WEST ROAD)
SET NAIL AND TAG SOUTH SIDE 12" ELM, N80°E, 77.48'
SET NAIL AND TAG EAST SIDE 24" ASH, S20°W, 38.89'
 - R.P. #24 (1/2" BAR 17' NORTHWEST OF GRAVEL DRIVE)
SET NAIL AND TAG SOUTHEAST SIDE 14" MAPLE, N70°E, 17.35'
SET NAIL AND TAG WEST SIDE 16" ELM, S20°E, 71.82'
 - R.P. #21 (1/2" BAR 4' EAST OF GRAVEL DRIVE ON CAMPSITE 325)
SET NAIL AND TAG NORTHEAST SIDE 8" ASH, N30°W, 36.33'
SET NAIL AND TAG SOUTH SIDE 18" ELM, S45°E, 45.05'
 - R.P. #13 (1/2" BAR EAST SIDE OF ROAD)
SET NAIL AND TAG SOUTH SIDE 10" TWIN ASH, S80°W, 22.38'
SET NAIL AND TAG NORTH SIDE 6" SASAFRAS, EAST, 10.33'
SET NAIL AND TAG EAST SIDE 4" SASAFRAS, N10°E, 13.20'
- BENCH MARK #4
PK NAIL IN WEST SIDE 12" TWIN ASH, ELEVATION 87.56
- ALL ELEVATIONS ARE 500.00 FEET PLUS

THIS PLAN WAS MADE AT THE DIRECTION OF THE PARTIES NAMED HEREON AND IS INTENDED SOLELY FOR THEIR IMMEDIATE USE AND NO SURVEY HAS BEEN MADE AND NO PROPERTY LINES WERE MONUMENTED UNLESS OTHERWISE SPECIFICALLY NOTED. AND NO DIMENSIONS HEREON ARE INTENDED FOR THE USE IN ESTABLISHING PROPERTY LINES. UTILITY INFORMATION AS SHOWN WAS OBTAINED FROM AVAILABLE PUBLIC RECORDS AND FROM SUPPORTING FIELD OBSERVATIONS WHERE POSSIBLE.

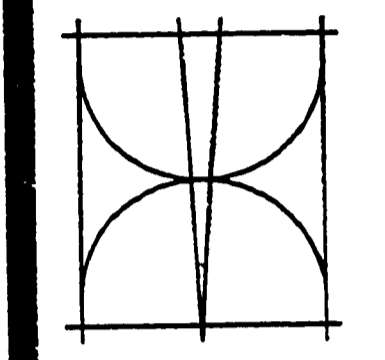
- TREE LEGEND
- O = OAK
 - H = HICKORY
 - A = ASH
 - M = MAPLE
 - E = ELM



Existing Building Site Survey

SCALE 1"=20' 0"

Bernath-Cookley Associates, Architects
4104 W. St. Joseph Hwy.
Lansing, Michigan 48917
(517) 321-9522



STATE OF MICHIGAN
DEPARTMENT OF MANAGEMENT AND BUDGET
Office of Facilities

TOILET AND SHOWER BUILDING
ALGONAC STATE PARK
STATE OF MICHIGAN
DEPARTMENT OF NATURAL RESOURCES
PARKS DIVISION ACCT. NO. 607-75-2450-400
QUALITY OF LIFE RECREATIONAL BOND

Revisions
Date 5/14/90
Comm. No. 9002
Sheet No.

S-1

L-114