

R.P. #	COORD'S	R.P. #	COORD'S
24	N 7183.04 E 3618.65	27	N 7057.98 E 3426.18
23	N 6897.60 E 3707.57	28	N 6865.44 E 3535.24
26	N 6744.78 E 3923.51	21	N 7023.33 E 3813.23
		13	N 7098.22 E 4269.70

WITNESSES TO R.P.

R.P. #26 (1/2" BAR 5' EAST OF GRAVEL ON EAST-WEST ROAD)
SET NAIL AND TAG NORTH SIDE 18" ASH, WEST, 36.72'
SET NAIL AND TAG WEST SIDE 20" TWIN ASH, N20°E, 31.95'

R.P. #23 (1/2" BAR CENTERLINE OF N. E. S. & W. GRAVEL DRIVES)
SET NAIL AND TAG NORTHWEST SIDE 8" ASH, N80°E, 31.57'
SET NAIL AND TAG EAST SIDE 15" TWIN ASPEN, N10°E, 28.65'

R.P. #28 (1/2" BAR 5' SOUTH OF DRIVE ON EXTENDED CENTERLINE OF DRIVE TO THE NORTH)
SET NAIL AND TAG WEST SIDE 12" ELM, N80°E, 38.11'
SET NAIL AND TAG WEST SIDE 8" THORNAPPLE, S05°E, 9.30'

R.P. #27 (1/2" BAR 5' WEST GRAVEL ON EAST-WEST ROAD)
SET NAIL AND TAG SOUTH SIDE 12" ELM, N80°E, 77.48'
SET NAIL AND TAG EAST SIDE 24" ASH, S20°W, 36.89'

R.P. #24 (1/2" BAR 17' NORTHWEST OF GRAVEL DRIVE)
SET NAIL AND TAG SOUTHEAST SIDE 14" MAPLE, N70°E, 17.35'
SET NAIL AND TAG WEST SIDE 16" ELM, S20°E, 71.82'

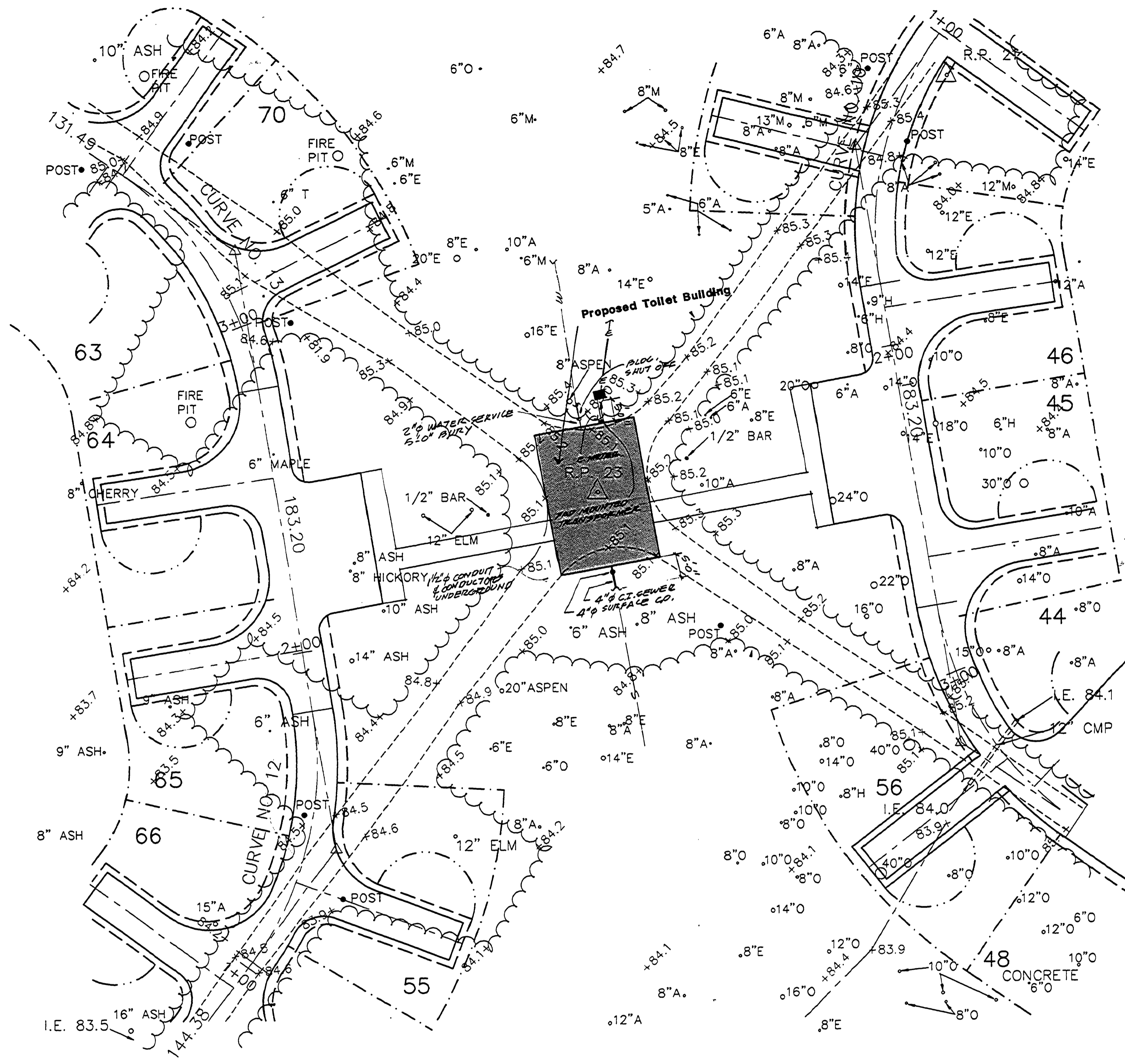
R.P. #21 (1/2" BAR 4' EAST OF GRAVEL DRIVE ON CAMPSITE 325)
SET NAIL AND TAG NORTHEAST SIDE 8" ASH, N30°W, 36.33'
SET NAIL AND TAG SOUTH SIDE 18" ELM, S45°E, 45.05'

R.P. #13 (1/2" BAR EAST SIDE OF ROAD)
SET NAIL AND TAG SOUTH SIDE 10" TWIN ASH, S80°W, 22.38'
SET NAIL AND TAG NORTH SIDE 6" SASAFRAS, EAST, 10.33'
SET NAIL AND TAG EAST SIDE 4" SASAFRAS, N10°E, 13.20'

BENCH MARK #4
PK NAIL IN WEST SIDE 12" TWIN ASH, ELEVATION 87.56
ALL ELEVATIONS ARE 500.00 FEET PLUS

TREE LEGEND

O = OAK
H = HICKORY
A = ASH
M = MAPLE
E = ELM



Utilities Plan

SCALE 1/4"=1'-0"

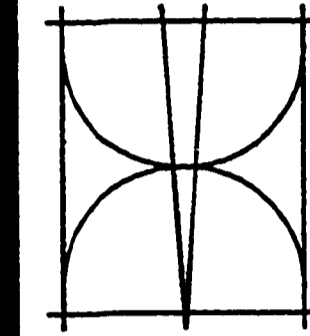
LEGEND

---E--- UNDERGROUND ELECTRICAL SERVICE - ELECTRICAL SERVICE TO WITHIN 5'-0" OF BUILDING PROVIDED UNDER OTHER PORTIONS OF CAMPGROUND REMODELING PLANS SEE CAMPGROUND ELECTRICAL PLANS

---W--- UNDERGROUND WATER SERVICE ELECTRICAL SERVICE TO WITHIN 5'-0" OF BUILDING PROVIDED UNDER OTHER PORTIONS OF CAMPGROUND REMODELING PLANS SEE CAMPGROUND WATER SERVICE & DISTRIBUTION PLANS

---S--- SANITARY SEWER SANITARY SEWER TO WITHIN 5'-0" OF BUILDING PROVIDED UNDER OTHER PORTIONS OF CAMPGROUND REMODELING PLANS SEE CAMPGROUND SANITARY SEWER PLANS

Bernath-Cookley Associates, Architects
4104 W. St. Joseph Hwy.
Lansing, Michigan 48917
(517) 321-9525



STATE OF MICHIGAN
DEPARTMENT OF MANAGEMENT AND BUDGET
Office of Facilities

TOILET AND SHOWER BUILDING
ALGONAC STATE PARK
STATE OF MICHIGAN
DEPARTMENT OF NATURAL RESOURCES
PARKS DIVISION ACCT. NO. 607-75-2450-400
QUALITY OF LIFE RECREATIONAL BOND

Revisions
Date 5/14/70
Comm. No. 9002
Sheet No. L-114