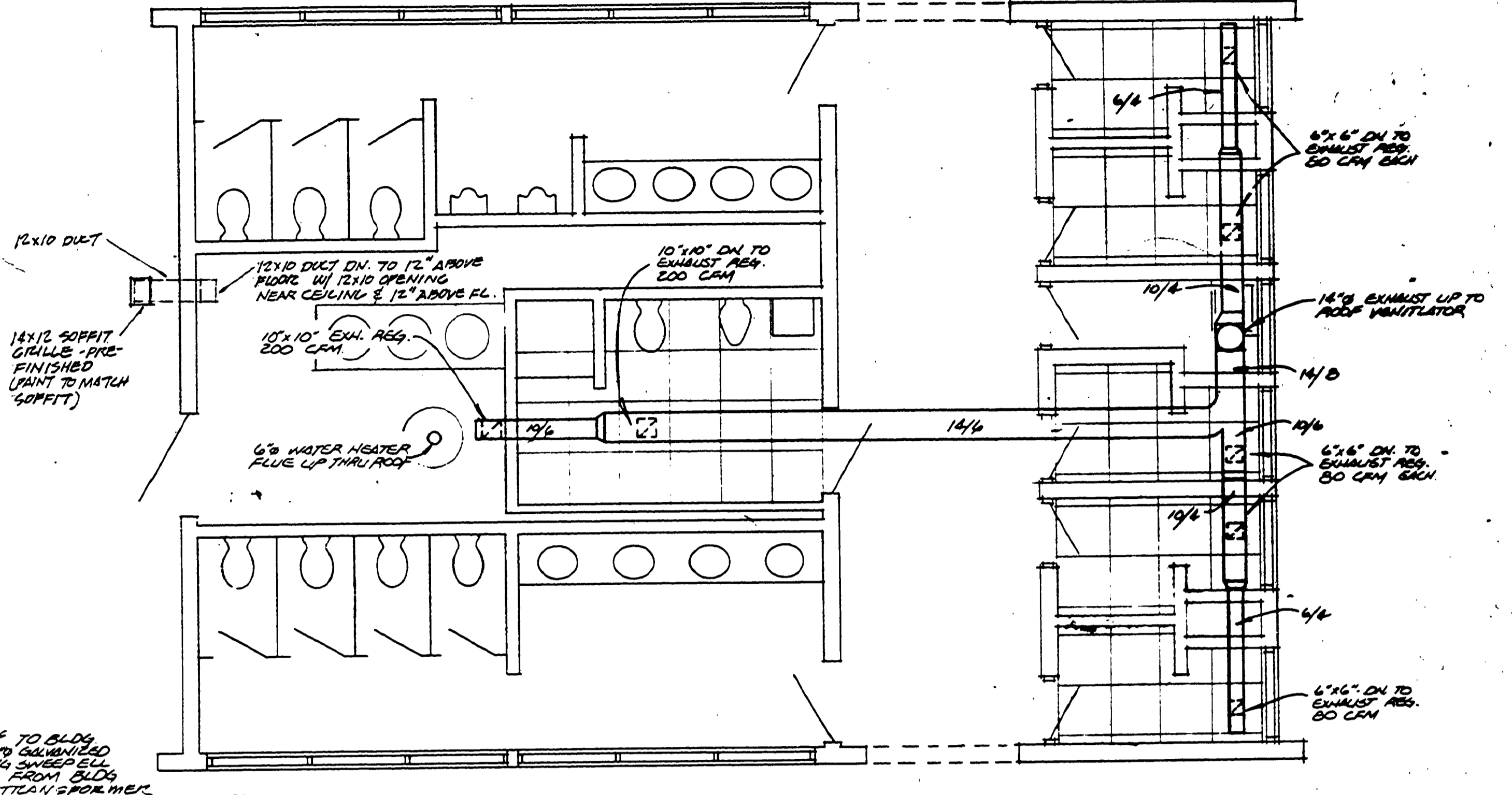


ELECTRICAL FLOOR PLAN  
SCALE 1/8" = 1'-0"



VENTILATION FLOOR PLAN  
SCALE 1/4" = 1'-0"

(3) #2 COPPER TRUNK CONDUIT TO BLDG ELECTRICAL PANEL. PROVIDE 1/2" GALVANIZED SERVICE ENTRANCE CONDUIT W/ LOW IMPACT RESISTANT GLASS PANEL TO METAL TRANSFORMER PAD.

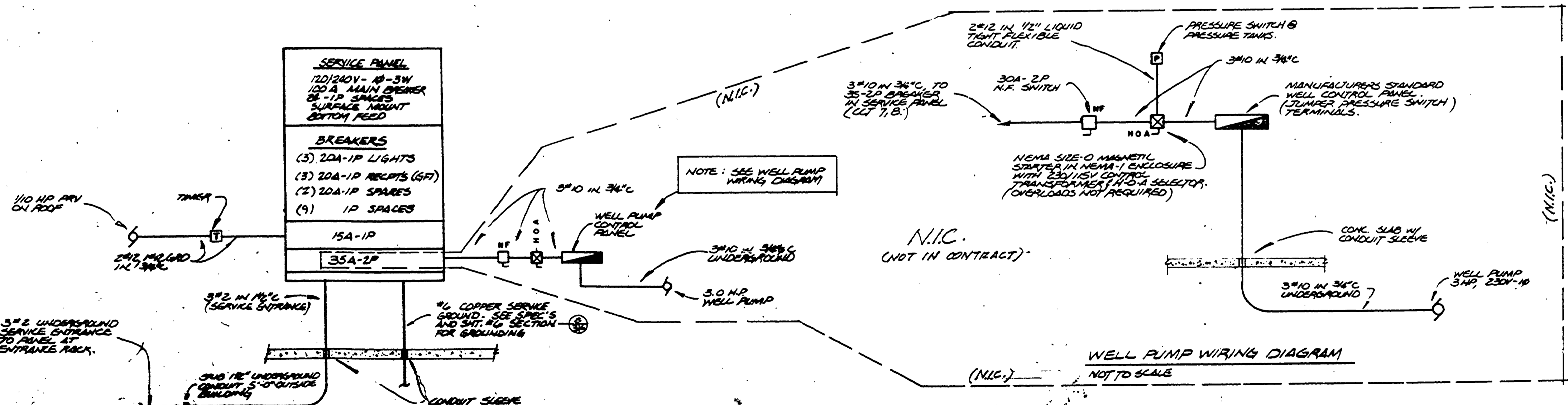
**LIGHTING FIXTURE SCHEDULE**

NO.	MFR.	CATALOG NO.	DESCRIPTION	LAMPS	DIFFUSER	REMARKS
1	McPHILBEN	4A-82L2-MB-RS	SQUARE RECESSED TO WATT HIGH PRESSURE SODIUM DOWN LIGHT	LU70	FLAT PRISMATIC W/ 1/4" IMPACT RESISTANT GLASS PANEL	PROVIDE W/ MEDIUM BRONZE FINISH AND UL DAMP LOCATION LABEL
2	McPHILBEN	43A-62L2-MB-RS	ROUND RECESSED TO WATT HIGH PRESSURE SODIUM DOWN LIGHT	LU70	FLAT PRISMATIC W/ 1/4" IMPACT RESISTANT GLASS PANEL	PROVIDE W/ MEDIUM BRONZE FINISH AND UL DAMP LOCATION LABEL
3	LEVITON	9875	PORCELAIN ONE PIECE KEYLESS INCANDESCENT FIXTURE	100W A-19	NONE	MOUNT ON BOTTOM CHORD OF TRUSS

- ELECTRICAL NOTES**
- CIRCUIT NUMBERS REPRESENT SINGLE POLE SPACES IN THE ELECTRICAL PANEL AND DO NOT CORRESPOND TO ACTUAL PANEL FINISHING.
  - LOADS ON THE ELECT. PANEL ARE TO BE BALANCED BY THE ELECT. CONTRACTOR AT TIME OF INSTALLATION.
  - CIRCUIT BREAKERS FOR RECEPTACLES ARE TO BE GROUND FAULT BREAKERS.
  - DEVICE BOXES IN THE FIRE ALLEY STORAGE ROOM AND THE CLOSET ROOM SHALL BE SUPPLIED MOUNTED. DEVICE BOXES IN ALL OTHER AREAS SHALL BE FLUSH MOUNTED.

**ELECTRICAL AND VENTILATION SYMBOLS AND ABBREVIATIONS**

- |    |                                     |        |  |
|----|-------------------------------------|--------|--|
| ⊗  | INCANDESCENT PORCELAIN FIXTURE      | A      | AMP  |
| ○  | RECESSED ROUND FIXTURE              | C      | CONDUIT                                    |
| □  | RECESSED SQUARE FIXTURE             | CCT    | CIRCUIT                                    |
| ⊕  | SINGLE POLE SWITCH                  | CFM    | CUBIC FEET PER MINUTE                      |
| ⊖  | SINGLE POLE SWITCH W/ PILOT LIGHT   | DN     | DOWN                                       |
| T  | TRUSS                               | EA     | EACH                                       |
| ⊙  | CONVENIENCE OUTLET                  | GRD    | GROUND                                     |
| ⊕  | NON FUSED DISCONNECT                | GFI    | GROUND FAULT INTERRUPTER (CIRCUIT BREAKER) |
| ⊖  | MAGNETIC STARTER W/ H.O.A. SELECTOR | H.O.A. | HAND-OFF-AUTOMATIC                         |
| ⊕  | PRESSURE SWITCH                     | HP     | HORSE POWER                                |
| ⊖  | ELECTRICAL PANEL                    | HP5    | HIGH PRESSURE SODIUM                       |
| ⊕  | MANUFACTURERS CONTROL PANEL         | P      | POLE                                       |
| ⊖  | SINGLE PHASE MOTOR                  | PRV    | POWER ROOF VENTILATOR                      |
| ⊕  | EXPOSED CONDUIT                     | SP     | STATIC PRESSURE                            |
| ⊖  | CONCEALED CONDUIT                   | V      | VENT                                       |
| W  | WIRE                                | AC     | ABOVE COUNTER                              |
| AF | ABOVE FINISHED FLOOR                |        |  |



WELL PUMP WIRING DIAGRAM  
NOT TO SCALE