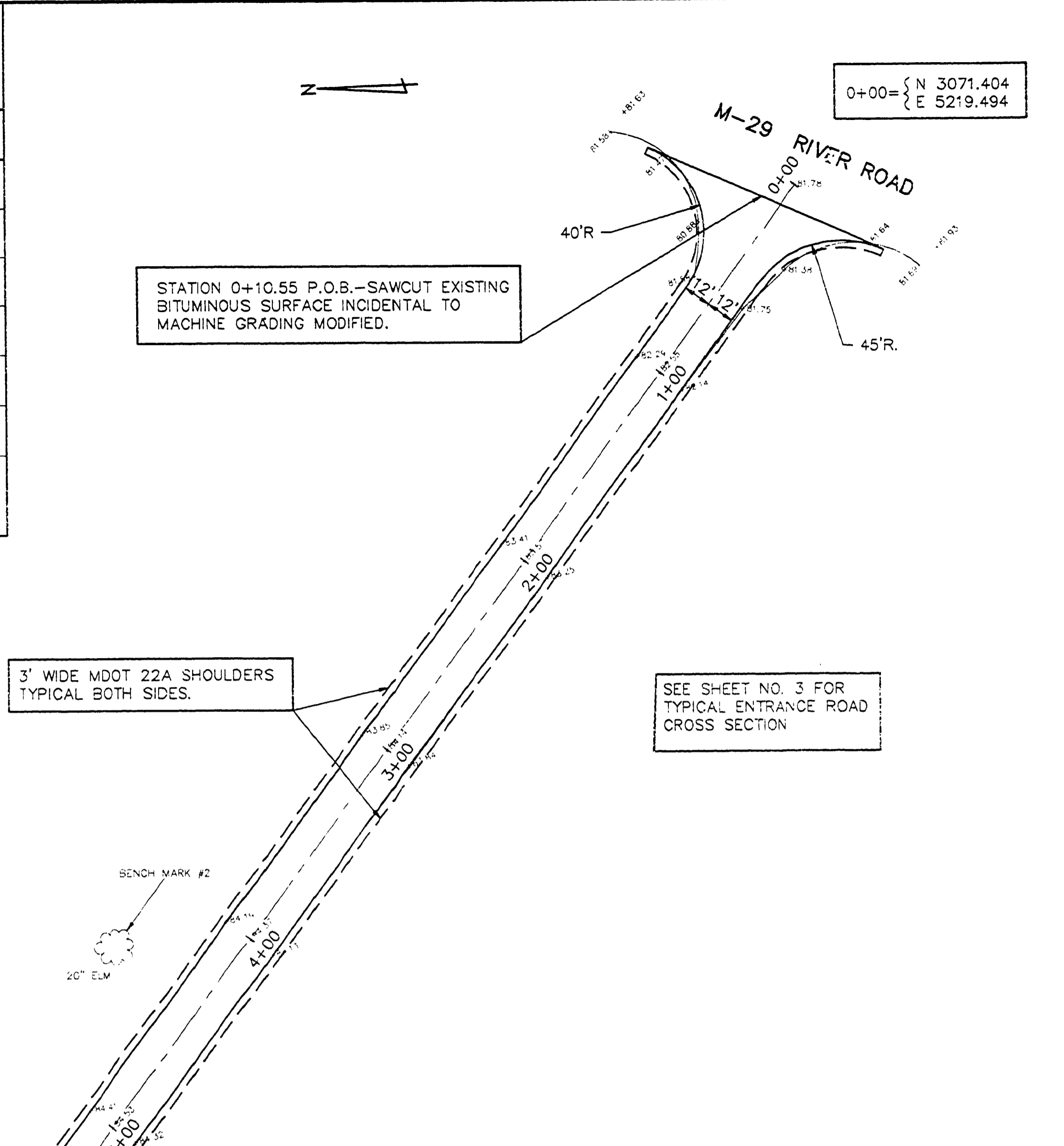


**PARK TURN-AROUND**  
SCALE: 1" = 30'

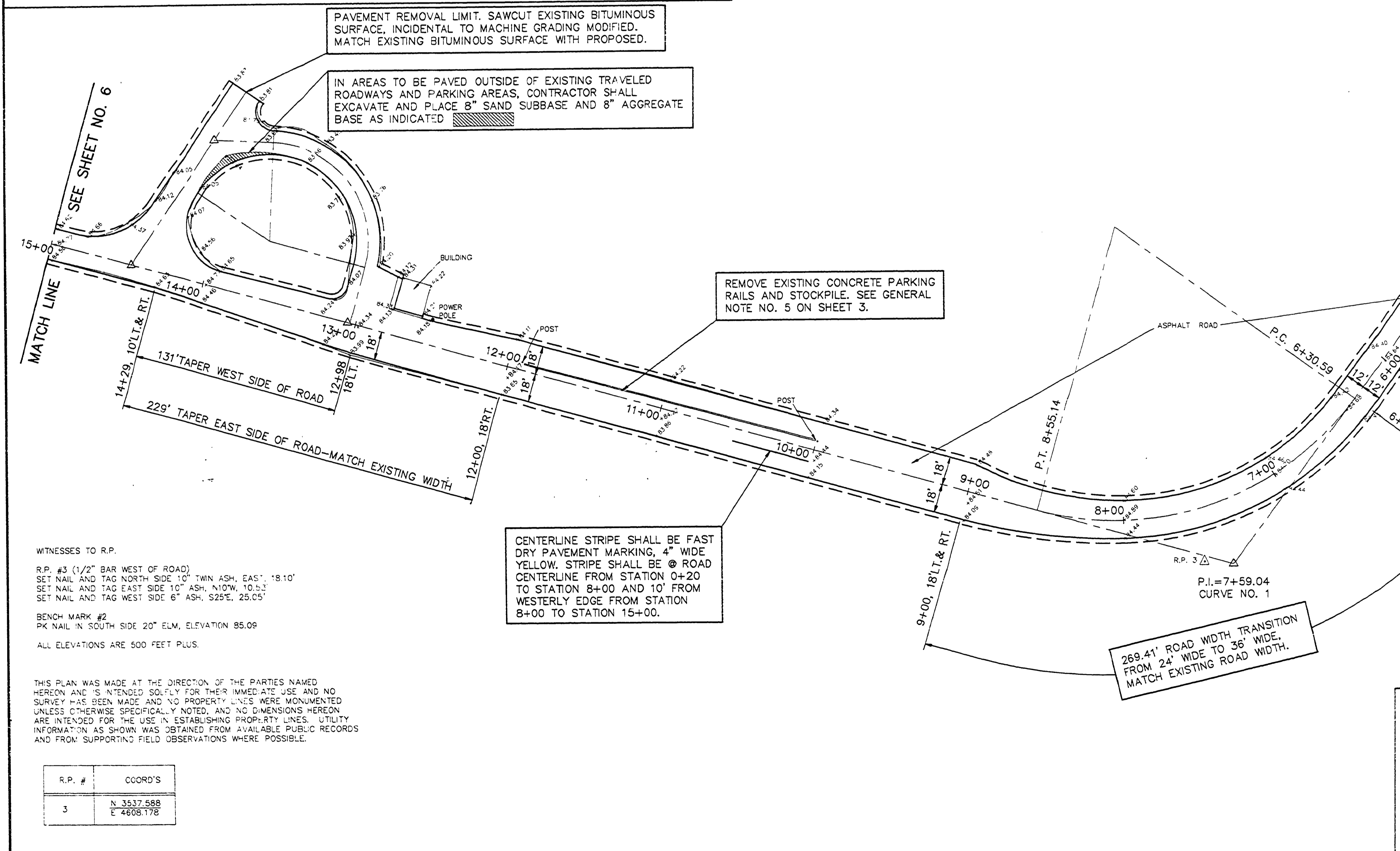
ENTRANCE ROAD QUANTITIES STATION 0+10 TO STATION 42+84		
ITEM	ESTIMATED QUANTITIES	UNIT USED
REMOVING TREES 19"-36" DIAMETER	1	EACH
* EARTH EXCAVATION	28	C.Y.
MACHINE GRADING MODIFIED	42.74	STA.
* SUBBASE (CIP)	13	C.Y.
AGGREGATE BASE BITUMINOUS	2265	TON
MDOT 22A SHOULDERS	475	TON
BITUMINOUS MIXTURE NO. 1100T, 20AA	1530	TON
3/4" STEEL POST	39	L.F.
SIGN TYPE IIIA	4.5	S.F.
FAST DRY PAVEMENT MARKINGS, 4" YELLOW	4910	L.F.
FAST DRY PAVEMENT MARKINGS, 8" YELLOW	212	L.F.
12" CORRUGATED PIPE	50	L.F.
12" CORRUGATED END SECTION	2	EACH
REMOVE AND STOCKPILE EXISTING CONCRETE PARKING RAILS	971	L.F.
INSTALL EXISTING CONCRETE PARKING RAILS	971	L.F.
FURNISH AND INSTALL NEW CONCRETE PARKING RAILS ALLOWANCE RESTORATION	243	L.S.

\* SAND SUBBASE IS NEEDED ONLY IN AREAS WHERE EXISTING SOILS ARE UNSTABLE. THE EARTH EXCAVATION AND SUBBASE QUANTITIES WILL BE ADJUSTED IF SAND SUBBASE IS NOT REQUIRED.



**CONSTRUCTION NOTES - ENTRANCE ROAD - STATION 0+00 TO STATION 42+84**

1. THE EXISTING BITUMINOUS ROAD SURFACE SHALL BE REMOVED FROM STA. 0+10.55 TO STA. 42+74, INCLUDING ADJACENT PARKING AREAS, SANITATION STATION AREA, PARK TURN-AROUND, AND ROAD APPROACHES.
2. 3" OF MDOT 22A AGGREGATE BASE SHALL BE ADDED TO THE EXISTING AGGREGATE BASE AND GRADED TO A CROWN OF 0.015'/FT..
3. THE PROPOSED BITUMINOUS PAVEMENT SHALL BE MDOT NO.1100T, 20AA. APPLICATION RATE SHALL BE 220#/S.Y..
4. PAYMENT FOR REMOVING THE EXISTING BITUMINOUS PAVEMENT AND GRADING THE 22A AGGREGATE BASE SHALL BE INCLUDED IN THE COST OF MACHINE GRADING MODIFIED.
5. MDOT 22A SHOULDERS SHALL BE PLACED ADJACENT TO THE NEW BITUMINOUS PAVEMENT - 3' WIDE AND 3" THICK AND FEATHERED TO MATCH EXISTING SHOULDER ELEVATION.



HORIZONTAL CURVE NO. 1	
Δ=69°32'43"	
D=30°58'14"	
R=185.00'	
T=128.45'	
L=224.55'	
PC=6+30.59	N 3443.376
	E 4710.300
PI=7+59.04	N 3519.144
	E 4606.580
PT=8+55.14	N 3642.803
	E 4641.324

WITNESSES TO R.P.  
R.P. #3 (1/2" BAR WEST OF ROAD)  
SET NAIL AND TAG NORTH SIDE 10" TWIN ASH, EAST, 18.10'  
SET NAIL AND TAG EAST SIDE 10" ASH, NORTH, 10.12'  
SET NAIL AND TAG WEST SIDE 6" ASH, S25°E, 25.05'

BENCH MARK #2  
PK NAIL IN SOUTH SIDE 20" ELM, ELEVATION 85.09

ALL ELEVATIONS ARE 500 FEET PLUS.

CENTERLINE STRIPE SHALL BE FAST DRY PAVEMENT MARKING, 4" WIDE YELLOW. STRIPE SHALL BE @ ROAD CENTERLINE FROM STATION 0+20 TO STATION 8+00 AND 10' FROM WESTERLY EDGE FROM STATION 8+00 TO STATION 15+00.

REMOVE EXISTING CONCRETE PARKING RAILS AND STOCKPILE. SEE GENERAL NOTE NO. 5 ON SHEET 3.

PAVEMENT REMOVAL LIMIT. SAWCUT EXISTING BITUMINOUS SURFACE, INCIDENTAL TO MACHINE GRADING MODIFIED. MATCH EXISTING BITUMINOUS SURFACE WITH PROPOSED.

IN AREAS TO BE PAVED OUTSIDE OF EXISTING TRAVELED ROADWAYS AND PARKING AREAS, CONTRACTOR SHALL EXCAVATE AND PLACE 8" SAND SUBBASE AND 8" AGGREGATE BASE AS INDICATED.

R.P. #	COORD'S
3	N 3517.588 E 4608.178