

HORIZONTAL CURVE NO. 6	HORIZONTAL CURVE NO. 5	HORIZONTAL CURVE NO. 4	HORIZONTAL CURVE NO. 3
$\Delta=90^{\circ}00'00''$	$\Delta=73^{\circ}44'23''$	$\Delta=106^{\circ}15'37''$	$\Delta=19^{\circ}56'17''$
$D=47^{\circ}44'47''$	$D=60^{\circ}18'41''$	$D=81^{\circ}51'04''$	$D=9^{\circ}32'57''$
$R=120.00'$	$R=95.00'$	$R=70.00'$	$R=600.00'$
$T=120.00'$	$T=71.25'$	$T=93.33'$	$T=105.46'$
$L=188.50'$	$L=122.27'$	$L=129.82'$	$L=208.79'$
PC=40+57.19	PC=39+19.92	PC=37+90.10	PC=32+25.77
N 5938.996	N 5904.703	N 5799.349	N 5600.892
E 3757.482	E 3635.904	E 3673.913	E 4198.957
PI=41+77.19	PI=39+91.17	PI=38+83.44	PI=33+31.23
N 5903.487	N 5964.259	N 5826.688	N 5664.316
E 3872.218	E 3775.014	E 3584.673	E 4114.698
PT=42+45.69	PT=40+42.19	PT=39+19.92	PT=34+34.56
N 5789.110	N 5943.389	N 5904.703	N 5695.207
E 3837.069	E 3743.139	E 3635.904	E 4013.863

WITNESSES TO R.P.

R.P. #2 (1/2" BAR NORTHEAST OF ROADS)  
 SET NAIL AND TAG SOUTH SIDE POST, WEST, 47.90'  
 SET NAIL AND TAG EAST SIDE 10" THORNAPPLE, SOUTH, 86.27'

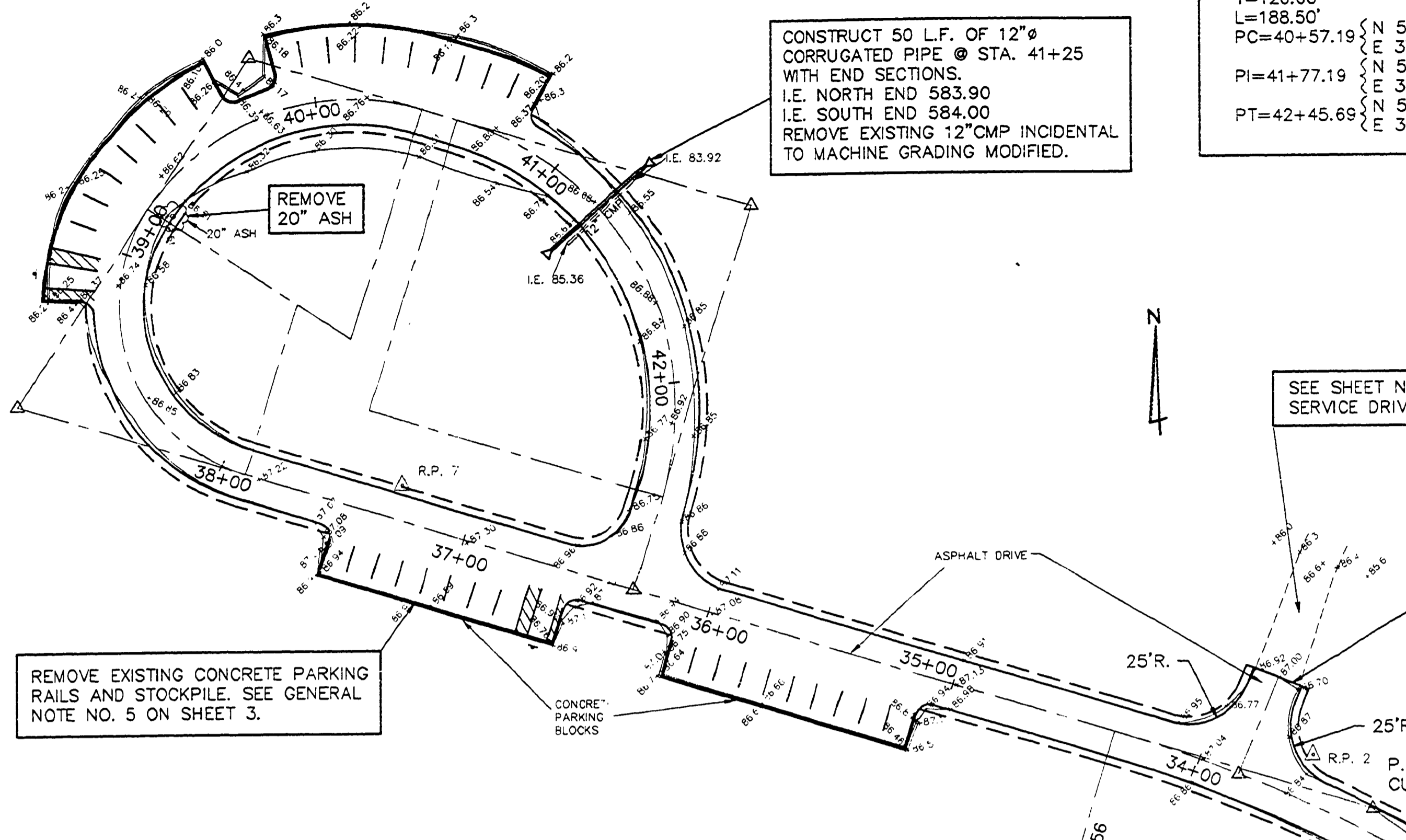
R.P. #7 (1/2" BAR NORTH SIDE ROAD)  
 SET NAIL AND TAG SOUTH SIDE 8" CUTTONWOOD, N80W, 24.76'  
 SET NAIL AND TAG WEST SIDE 22" OAK, SOUTH, 51.60'

R.P. #8 (1/2" BAR EAST SIDE ROAD)  
 SET NAIL AND TAG WEST SIDE 12" ASH, S30E, 8.07'  
 SET NAIL AND TAG WEST SIDE 12" ELM, N25E, 53.40'  
 SET NAIL AND TAG NORTH SIDE 8" 45", N80W, 39.00'

BENCH MARK #3  
 PK NAIL IN THE NORTH SIDE OF 30" MAPLE, S30E, 57.5' FROM  
 R.P. #2, ELEVATION 98.88

ALL ELEVATIONS ARE 500 FEET PLUS

CONSTRUCT 50 L.F. OF 12"Ø CORRUGATED PIPE @ STA. 41+25 WITH END SECTIONS. I.E. NORTH END 583.90 I.E. SOUTH END 584.00 REMOVE EXISTING 12" CMP INCIDENTAL TO MACHINE GRADING MODIFIED.



REMOVE EXISTING CONCRETE PARKING RAILS AND STOCKPILE. SEE GENERAL NOTE NO. 5 ON SHEET 3.

SEE SHEET NO. 8 FOR WAGON WHEEL SERVICE DRIVE IMPROVEMENTS.

SEE SHEET NO. 3 FOR TYPICAL ENTRANCE ROAD CROSS SECTION.

STATION EQUATION  
 33+83.28 = 0+00  
 N 5678.112  
 E 4062.189

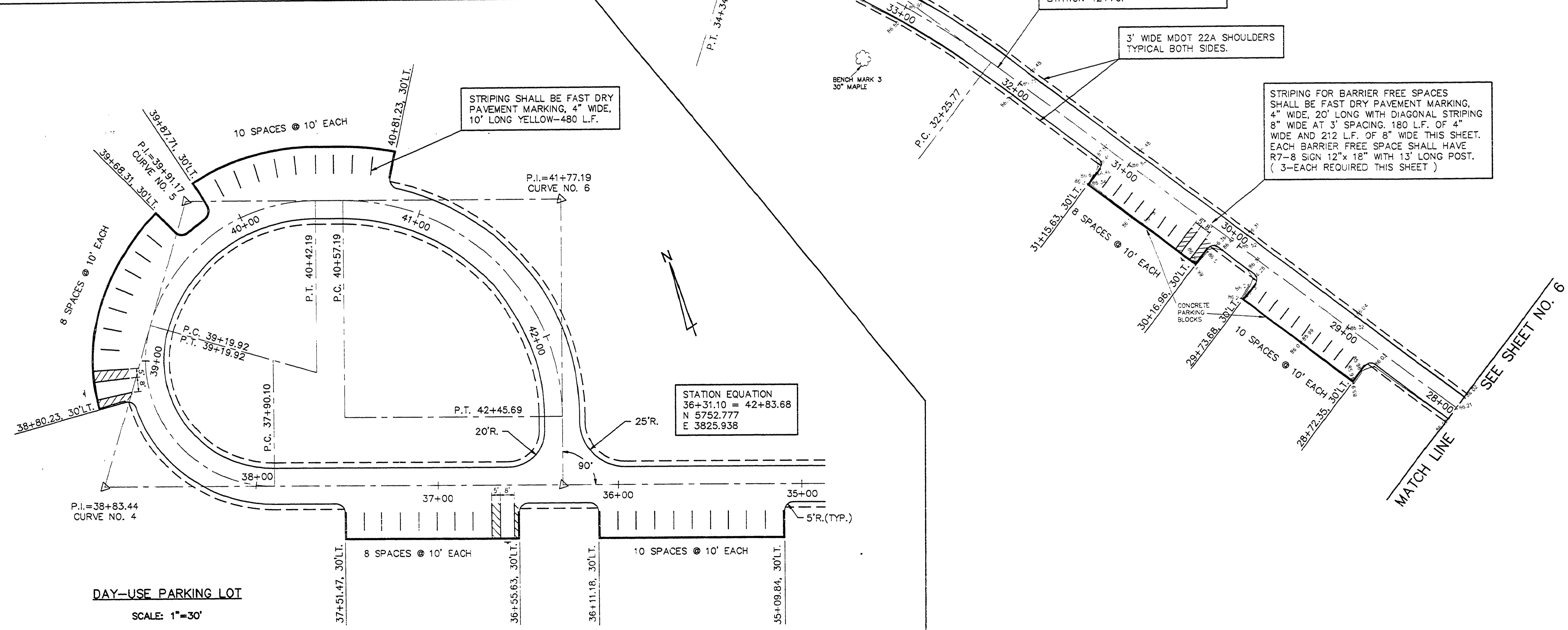
CENTERLINE STRIPE SHALL BE FAST DRY PAVEMENT MARKING, 4" WIDE YELLOW, FROM STATION 28+00 TO STATION 42+70.

3' WIDE MDOT 22A SHOULDERS TYPICAL BOTH SIDES.

STRIPING SHALL BE FAST DRY PAVEMENT MARKING, 4" WIDE, 10' LONG YELLOW-480 L.F.

STRIPING FOR BARRIER FREE SPACES SHALL BE FAST DRY PAVEMENT MARKING, 4" WIDE, 20' LONG WITH DIAGONAL STRIPING 8" WIDE AT 3' SPACING, 180 L.F. OF 4" WIDE AND 212 L.F. OF 8" WIDE THIS SHEET. EACH BARRIER FREE SPACE SHALL HAVE R7-8 SIGN 12"x 18" WITH 13' LONG POST. (3-EACH REQUIRED THIS SHEET)

R.P. #	COORD'S
2	N 5685.450 E 4097.262
7	N 5794.751 E 3735.548
9	N 6023.958 E 4229.690



DAY-USE PARKING LOT  
 SCALE: 1"=30'

STATION EQUATION  
 36+31.10 = 42+83.68  
 N 5752.777  
 E 3825.938

MATCH LINE  
 SEE SHEET NO. 6

L-115