

WITNESSES TO R.P.

R.P. #25 (1/2" BAR 5' EAST OF GRAVEL ON EAST-WEST ROAD)  
 SET NAIL AND TAG NORTH SIDE 18" ASH, WEST, 35.72'  
 SET NAIL AND TAG WEST SIDE 20" TWIN ASPEN, N20°E, 31.95'

R.P. #23 (1/2" BAR CENTERLINE OF N. E. S. & W. GRAVEL DRIVES)  
 SET NAIL AND TAG NORTHWEST SIDE 8" ASH, N80°E, 31.57'  
 SET NAIL AND TAG EAST SIDE 15" TWIN ASPEN, N10°E, 28.65'

R.P. #28 (1/2" BAR 5' SOUTH OF DRIVE ON EXTENDED CENTERLINE  
 OF DRIVE TO THE NORTH)  
 SET NAIL AND TAG WEST SIDE 12" ELM, N80°E, 38.11'  
 SET NAIL AND TAG WEST SIDE 8" THORNAPPLE, S05°E, 9.30'

R.P. #27 (1/2" BAR 5' WEST GRAVEL ON EAST-WEST ROAD)  
 SET NAIL AND TAG SOUTH SIDE 12" ELM, N80°E, 77.48'  
 SET NAIL AND TAG EAST SIDE 24" ASH, S20°W, 38.89'

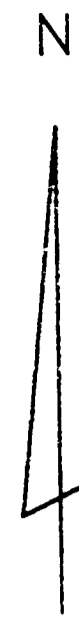
R.P. #24 (1/2" BAR 17' NORTHWEST OF GRAVEL DRIVE)  
 SET NAIL AND TAG SOUTHEAST SIDE 4" MAPLE, N70°E, 17.35'  
 SET NAIL AND TAG WEST SIDE 16" ELM, S20°E, 71.82'

R.P. #21 (1/2" BAR 4' EAST OF GRAVEL DRIVE ON CAMPSITE 325)  
 SET NAIL AND TAG NORTHEAST SIDE 8" ASH, N30°W, 36.33'  
 SET NAIL AND TAG SOUTH SIDE 18" ELM, S45°E, 45.05'

R.P. #13 (1/2" BAR EAST SIDE OF ROAD)  
 SET NAIL AND TAG SOUTH SIDE 10" TWIN ASPEN, S80°W, 72.35'  
 SET NAIL AND TAG NORTH SIDE 8" SASAFRAS, EAST, 14.43'  
 SET NAIL AND TAG EAST SIDE 4" SASAFRAS, N10°E, 13.20'

BENCH MARK #4  
 PK NAIL IN WEST SIDE 12" TWIN ASPEN, ELEVATION: 67.16'  
 ALL ELEVATIONS ARE 500.00 FEET PLUS

R.P. #	COORD'S
24	N 213.84 E 309.95
23	N 687.90 E 370.75
26	N 874.76 E 392.51
27	N 702.98 E 346.78
28	N 865.44 E 353.24
21	N 703.32 E 381.23
13	N 226.22 E 429.75



HORIZONTAL CURVE NO. 1	HORIZONTAL CURVE NO. 2	HORIZONTAL CURVE NO. 3
$\Delta=26^{\circ}21'14''$ $R=262.51'$ $T=61.46'$ $D=21.8261'$ $LC=120.74'$ $PC=0+16.62$ {N 7081.158 $PI=0+78.08$ {E 3919.253 $PT=1+37.36$ {E 3919.253	$\Delta=48^{\circ}33'12''$ $R=257.86'$ $T=114.054'$ $D=22.2197'$ $LC=218.51'$ $PC=1+37.36$ {N 7186.002 $PI=2+51.90$ {E 3777.889 $PT=3+55.87$ {E 3777.889	$\Delta=47^{\circ}54'04''$ $R=135.08'$ $T=60.00'$ $D=42.4162'$ $LC=112.93'$ $PC=4+20.73$ {N 7136.265 $PI=4+80.73$ {E 3543.713 $PT=5+33.66$ {E 3543.713
HORIZONTAL CURVE NO. 4	HORIZONTAL CURVE NO. 5	HORIZONTAL CURVE NO. 6
$\Delta=41^{\circ}36'01''$ $R=236.92'$ $T=90.00'$ $D=24.1836'$ $LC=172.02'$ $PC=6+29.68$ {N 6923.434 $PI=7+19.68$ {E 3420.298 $PT=8+01.70$ {E 3420.298	$\Delta=41^{\circ}56'43''$ $R=234.79'$ $T=90.00'$ $D=24.4030'$ $LC=171.89'$ $PC=8+11.79$ {N 6737.158 $PI=9+01.79$ {E 3458.169 $PT=9+83.68$ {E 3458.169	$\Delta=36^{\circ}45'35''$ $R=270.87'$ $T=90.00'$ $D=21.1525'$ $LC=173.78'$ $PC=10+09.18$ {N 6614.740 $PI=10+99.18$ {E 3623.228 $PT=11+82.96$ {E 3623.228
HORIZONTAL CURVE NO. 7	HORIZONTAL CURVE NO. 8	HORIZONTAL CURVE NO. 9
$\Delta=55^{\circ}06'03''$ $R=193.09'$ $T=100.73'$ $D=29.8731'$ $LC=185.69'$ $PC=11+82.96$ {N 6615.396 $PI=12+83.69$ {E 3813.958 $PT=13+68.65$ {E 3813.958	$\Delta=34^{\circ}42'08''$ $R=196.71'$ $T=61.46'$ $D=29.1270'$ $LC=119.14'$ $PC=14+89.98$ {N 6848.488 $PI=15+51.44$ {E 3975.371 $PT=16+09.12$ {E 3975.371	$\Delta=27^{\circ}05'00''$ $R=255.22'$ $T=61.47'$ $D=22.4232'$ $LC=120.78'$ $PC=16+09.12$ {N 6971.414 $PI=16+70.59$ {E 3975.371 $PT=0+16.29$ {E 3975.371
HORIZONTAL CURVE NO. 10	HORIZONTAL CURVE NO. 11	HORIZONTAL CURVE NO. 12
$\Delta=46^{\circ}03'31''$ $R=100.00'$ $T=42.51'$ $D=57.2958'$ $LC=80.39'$ $PC=1+00.68$ {N 7001.871 $PI=1+43.19$ {E 3785.785 $PT=1+81.07$ {E 3785.785	$\Delta=45^{\circ}48'07''$ $R=100.00'$ $T=42.24'$ $D=57.2958'$ $LC=79.94'$ $PC=2+79.52$ {N 6821.179 $PI=3+21.76$ {E 3816.010 $PT=3+59.46$ {E 3816.010	$\Delta=45^{\circ}48'07''$ $R=100.00'$ $T=42.24'$ $D=57.2958'$ $LC=79.94'$ $PC=1+02.14$ {N 6970.308 $PI=1+44.38$ {E 3928.875 $PT=1+82.08$ {E 3928.875
HORIZONTAL CURVE NO. 13		$\Delta=46^{\circ}03'31''$ $R=100.00'$ $T=42.51'$ $D=57.2958'$ $LC=80.39'$ $PC=2+80.53$ {N 6971.134 $PI=3+23.04$ {E 3589.463 $PT=3+60.92$ {E 3589.463

STATION EQUATION  
 5+78.01 = 4+49.90  
 N 7045.991  
 E 3491.365

STATION EQUATION  
 1+35.95 = 0+00  
 N 7116.883  
 E 3871.084

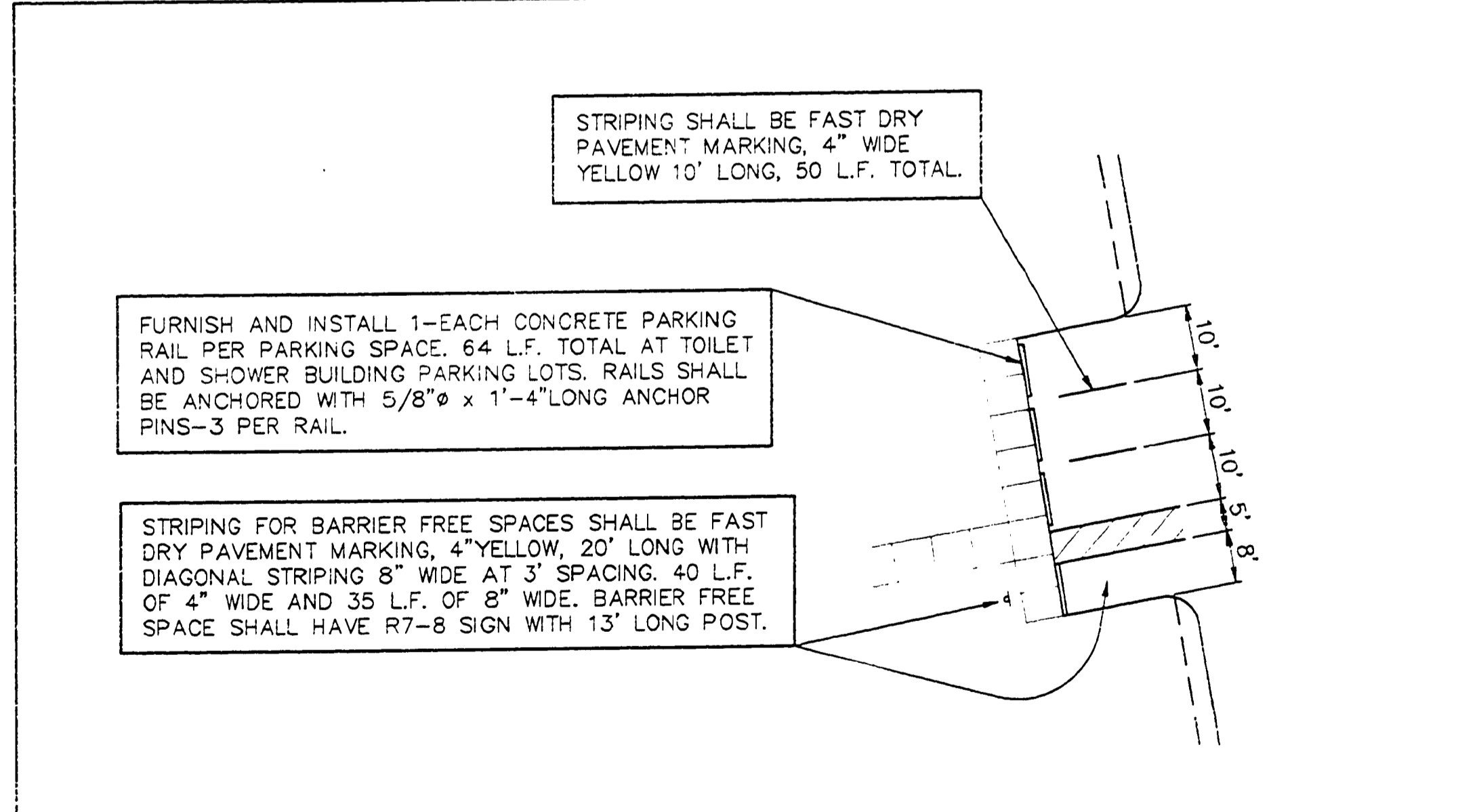
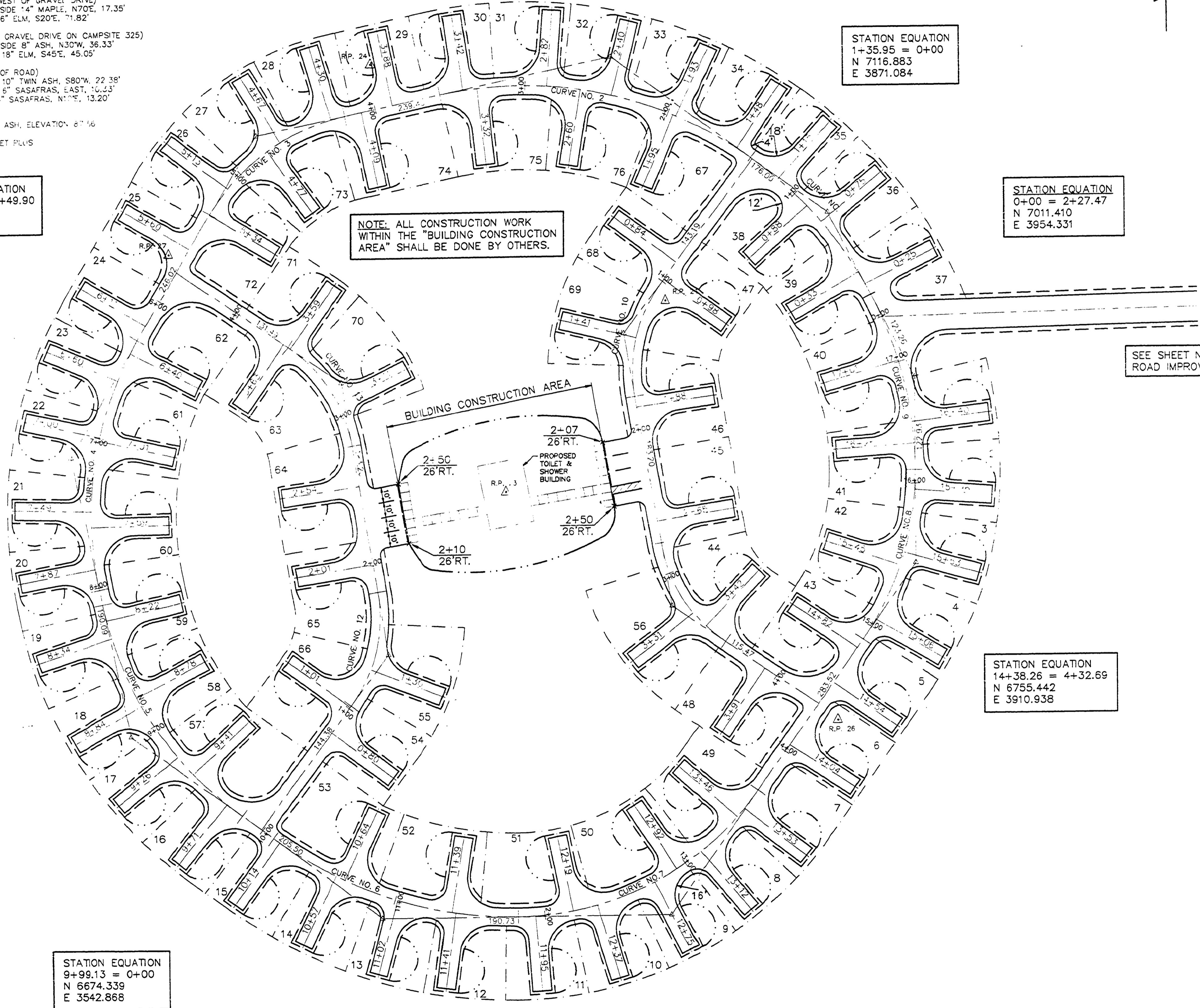
STATION EQUATION  
 0+00 = 2+27.47  
 N 7011.410  
 E 3954.331

STATION EQUATION  
 14+38.26 = 4+32.69  
 N 6755.442  
 E 3910.938

STATION EQUATION  
 9+99.13 = 0+00  
 N 6674.339  
 E 3542.868

NOTE: ALL CONSTRUCTION WORK  
 WITHIN THE "BUILDING CONSTRUCTION  
 AREA" SHALL BE DONE BY OTHERS.

SEE SHEET NO. 9 FOR  
 ROAD IMPROVEMENTS.



CAMPGROUND PARKING AREA LAYOUT DETAIL

SCALE: 1" = 20'

L-115