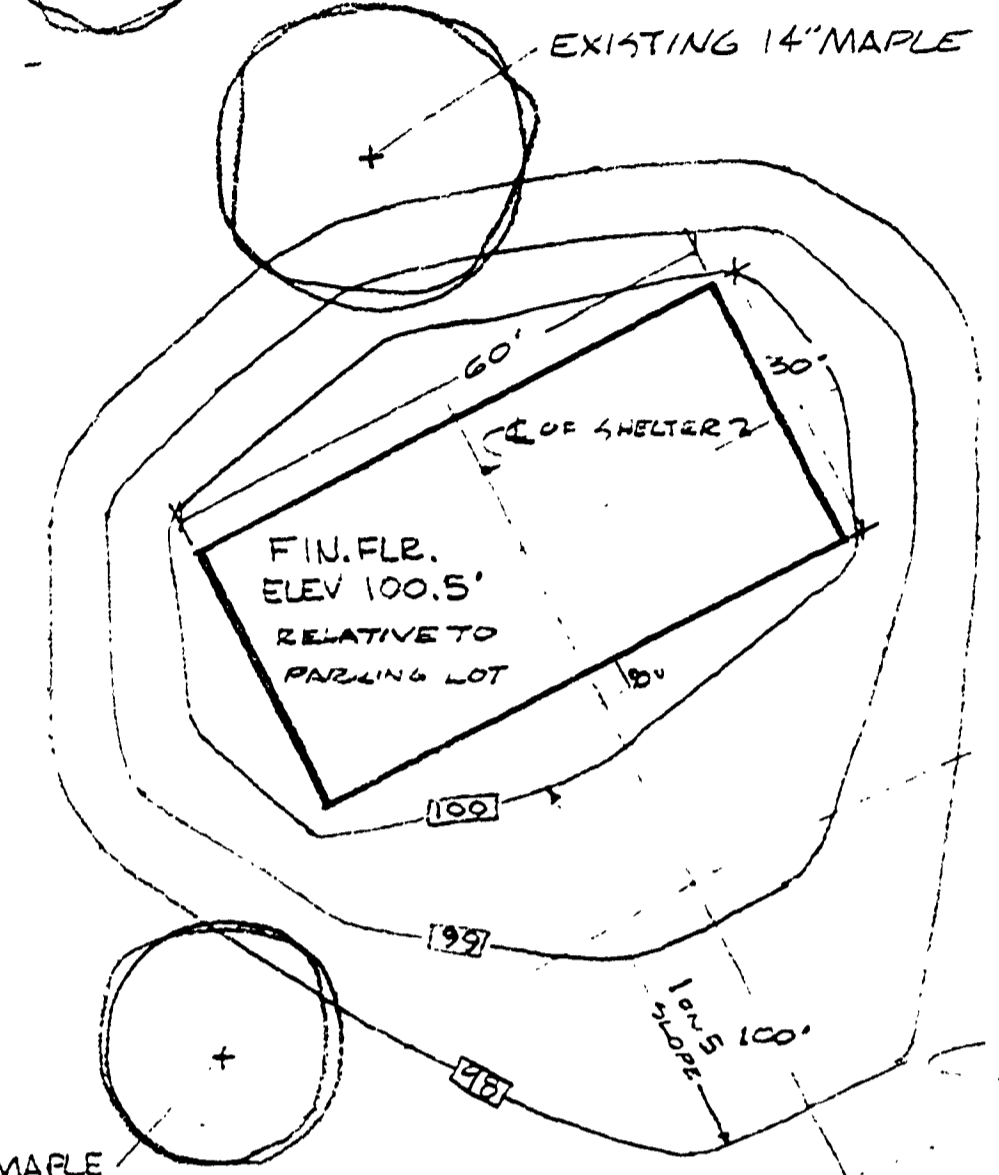


SMALL
WOODED AREA
ADJACENT TO PARK
ENTRANCE ROAD

PROPOSED SHELTER
PARK SIDE MODEL #30
27'-3" WIDE E. COL TO E. COL.
56'-0" LONG E. COL TO E. COL.



GRADING PATTERN
IS GENERALIZED TO
SHOW INTENT BUT
MUST BE MODIFIED
TO FIT EXISTING
CONDITIONS

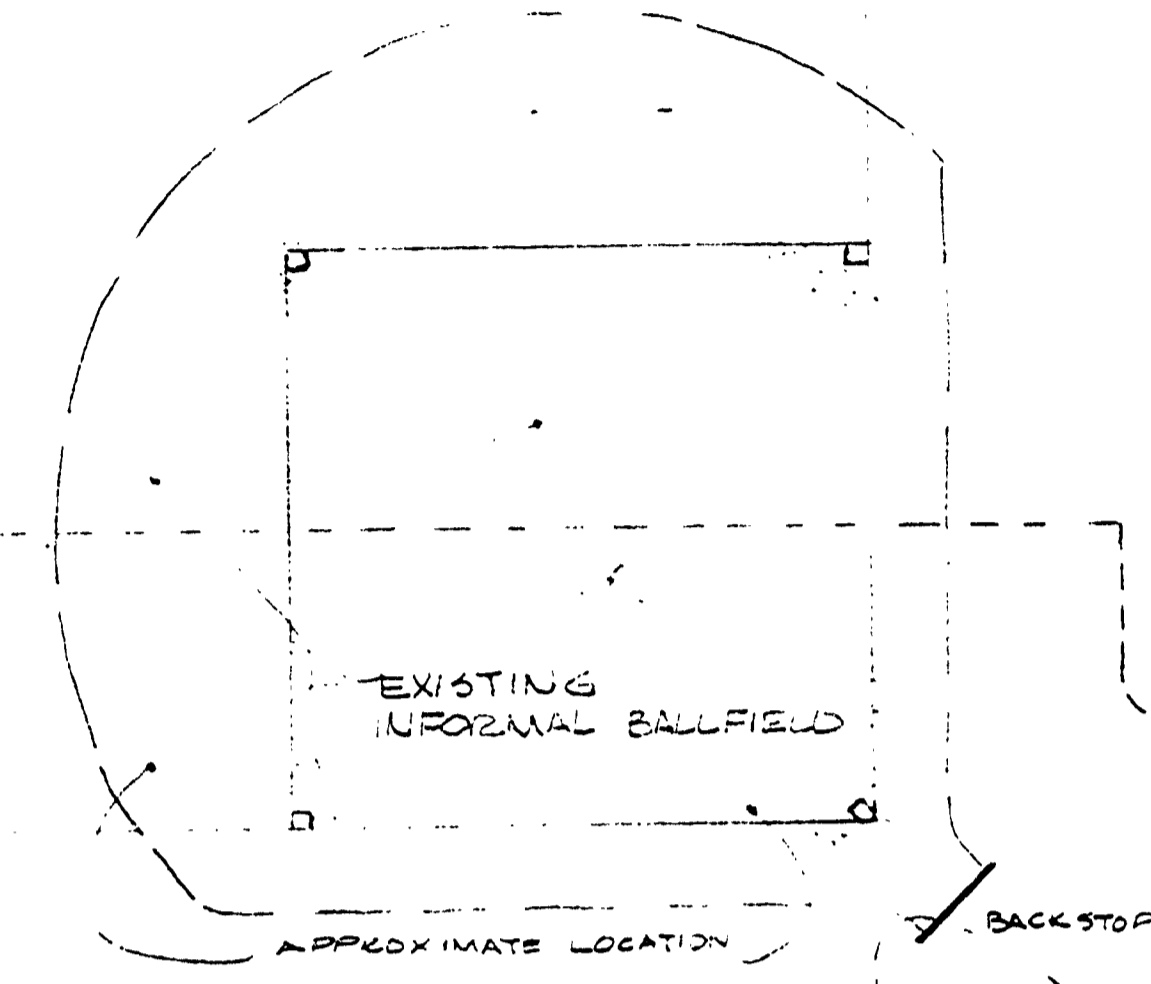
EXISTING 8' MAPLE

FUTURE PARKING
LOT TO BE GRADE
40' TO 45' BELOW
THAN EXISTING LOT
BUT STILL DRAIN PROPERLY.

FUTURE DAY USE PARKING EXPANSION

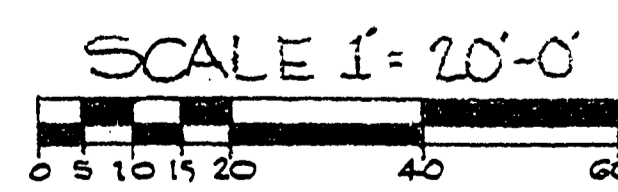
EXISTING PARKING

EXISTING PARKING
(152 CAR TOTAL CAPACITY)



EXISTING
INFORMAL BALLFIELD

DAY USE
ENTRANCE
ROAD



NORTH

REVIEWED BY: Henry H. J. Berg 12-19-83
IN CHARGE, PROGRAM PLANNING DATE

APPROVED BY: Jack B. Butler 12-19-83
CHIEF, PARKS DIVISION DATE

SURVEYED BY	DRAWN BY D. HELMIC	12-16-83	NO.	DATE	BY	REVISIONS	NO.	DATE	BY	REVISIONS	MICHIGAN DEPARTMENT OF NATURAL RESOURCES	PICNIC SHELTER SITE PLAN SHEET TITLE	AREA OR PARK ALGONAC S.P.	PROJECT NO. 24-2518
DESIGNED BY BUNCE	1956	CHECKED BY	1.				3.						DAY USE PICNIC AREA	SHEET 1 OF 1
	DATE		2.				4.							PLAN NO. A-104