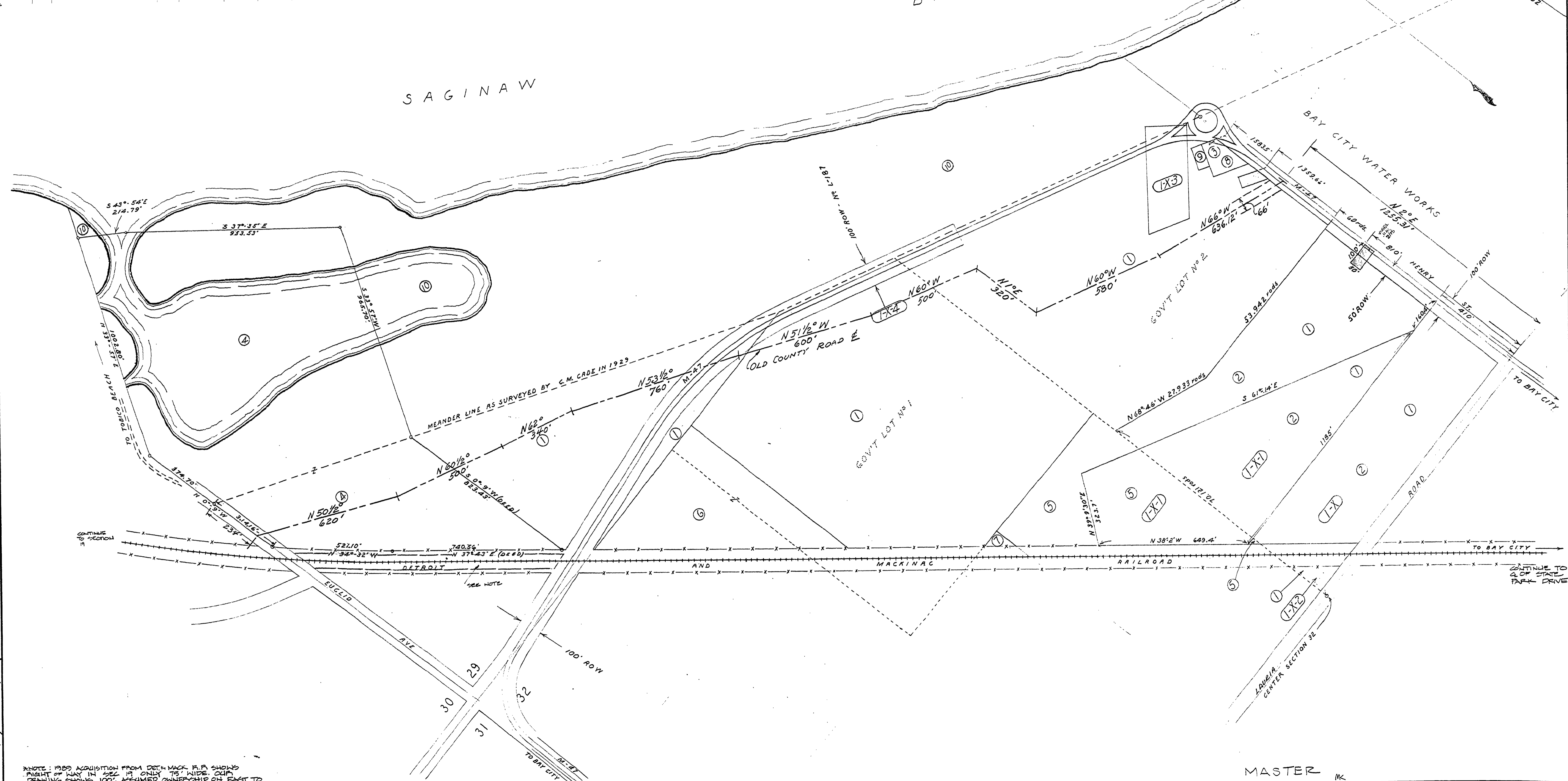


DRAWN BY	CHECKED BY	DATE	REVIEWED BY SECTIONS			APPROVED BY	REVISIONS		
			ARCHITECTURAL	ENGINEERING	LANDSCAPE		No.	DATE	BY
W.L.K.	C.F.B.	May 2 1949	J.T.R.	H.C.M.	D.A.W.	John S. Rogers	1		
						ASSISTANT CHIEF IN CHARGE	2		
						OF DESIGN	3		
						DATE 5-2-49	4		
						DATE 2 May 49	5		
						DATE 5-2-49	6		

LANDS ACQ. FILE NO.	ACQUIRED FROM	DEED KIND	DATE	COST	ACREAGE	SAINT LAKE FRONTAGE
170-B	1 CITY OF BAY CITY	VI	FEB. 25/1929	GIFT	76.59	
170-C	2 BENJAMIN G. TRUDELL	VI	APR. 30/1929	8000.	2986	
170-A	3 ORRIN B. & ADDIE V. DORAN	VI	JUN. 14/1929	10,000.	40	
P-170-D	4 PHILIP PLOOF (CONDENATION) DECREE		APR. 17/1931	20012.28	3800.	
0646	5 GUSTAVE NESTLER	VI	MAR. 12/1935	EXG.	792	152.77
26173	6 TO CITY OF BAY CITY	STATE	APR. 12/1935	EXG.	Less 126	141.51
0681	7 CITY OF BAY CITY	VI	JUN. 15/1936	EXG.	799	149.50
27263	8 TO CITY OF BAY CITY	STATE	JUN. 15/1936	EXG.	Less 1270	136.80
0860	9 DEWEY A. & MARTHA NELSON	VI	AUG. 20/1941	EXG.	11	136.91
35601	10 TO DEWEY A. & MARTHA NELSON STATE		AUG. 20/1941	EXG.	Less 38	136.53
P-170-A	11 STATE LAND OFFICE BOARD LAND		AUG. 5/1943	0		
01337	12 FLOYD W. & EVALINE HARRISON	VI	MAY 25/1948	EXG.	11	136.64
1-X-3	13 TO BAY CITY COMMUNITY SERVICE LEASE		AUG. 25/1924			
L-187	14 TO MICH. STATE HIGHWAY DEPT. ROW		FEB. 8/1935			
	15 MADE LAND				59.44	135.78



SCALE 1 IN. = 200 FT.

BANGOR TOWNSHIP - BAY COUNTY
TOWN 15 NORTH - RANGE 5 EAST

MICHIGAN
DEPARTMENT OF CONSERVATION
PARKS AND RECREATION DIVISION

MASTER PLAN
BAY CITY STATE PARK
LAND MAP

SHEET NO. 1 OF 1

PLAN NO. R-1

STATE OWNED LAND