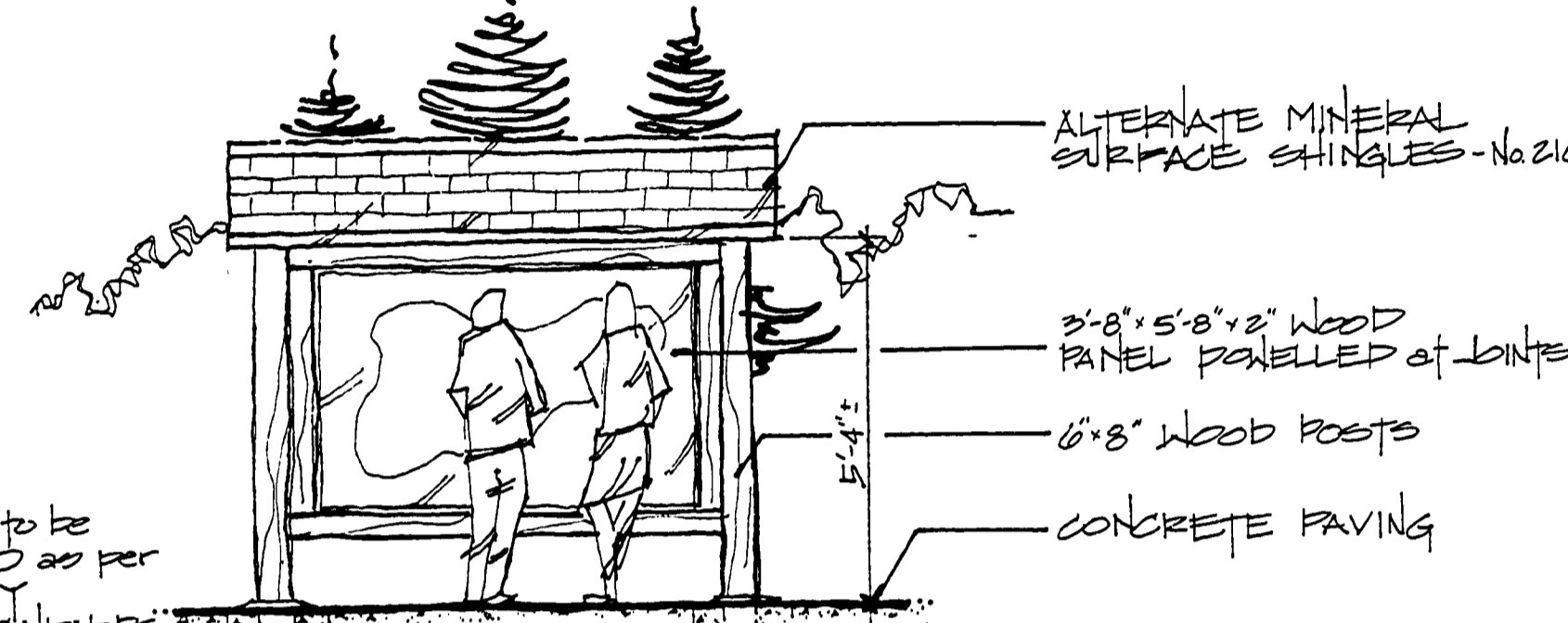


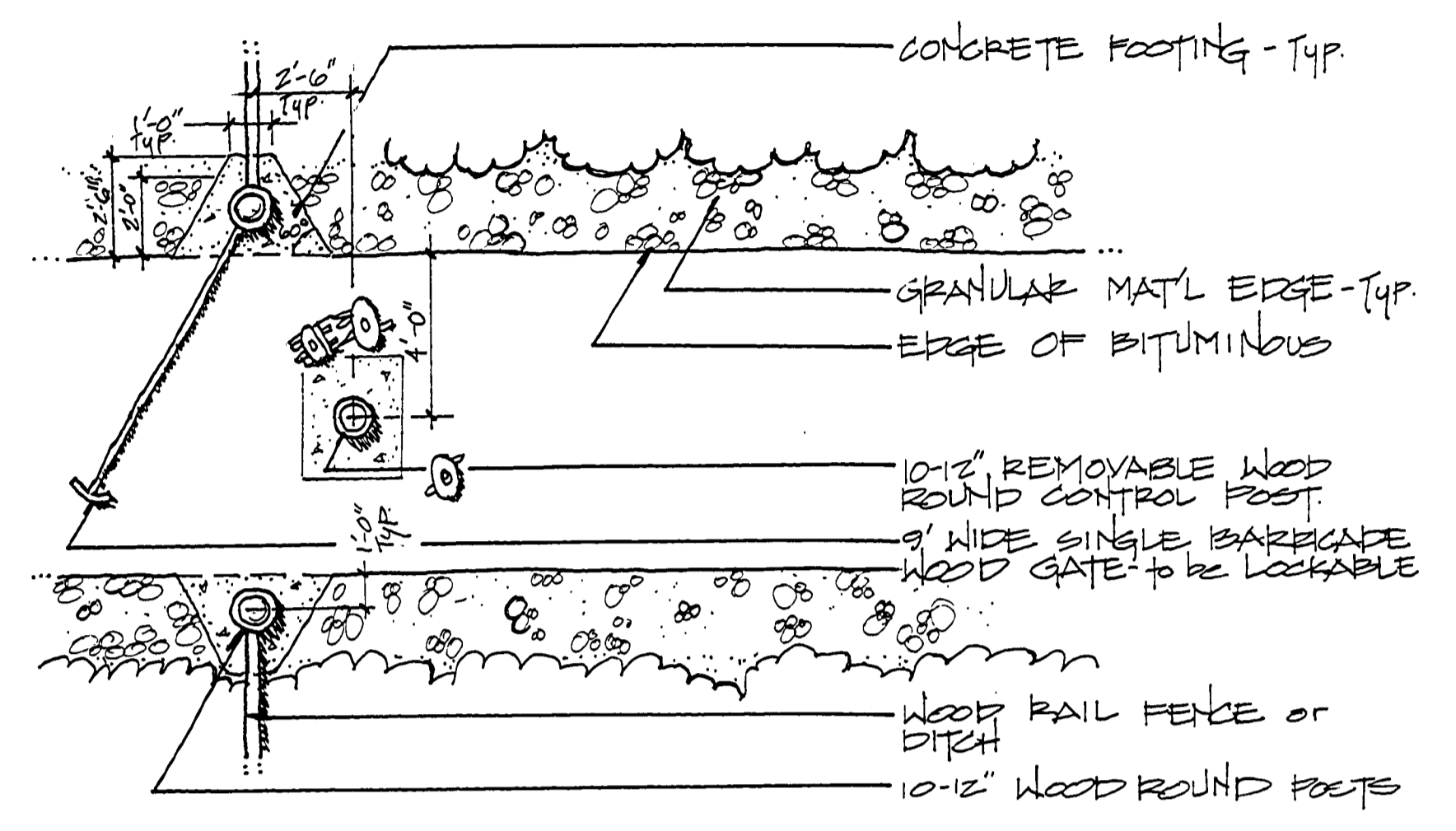
— PLAN —
scale: 1/8" = 1'-0"



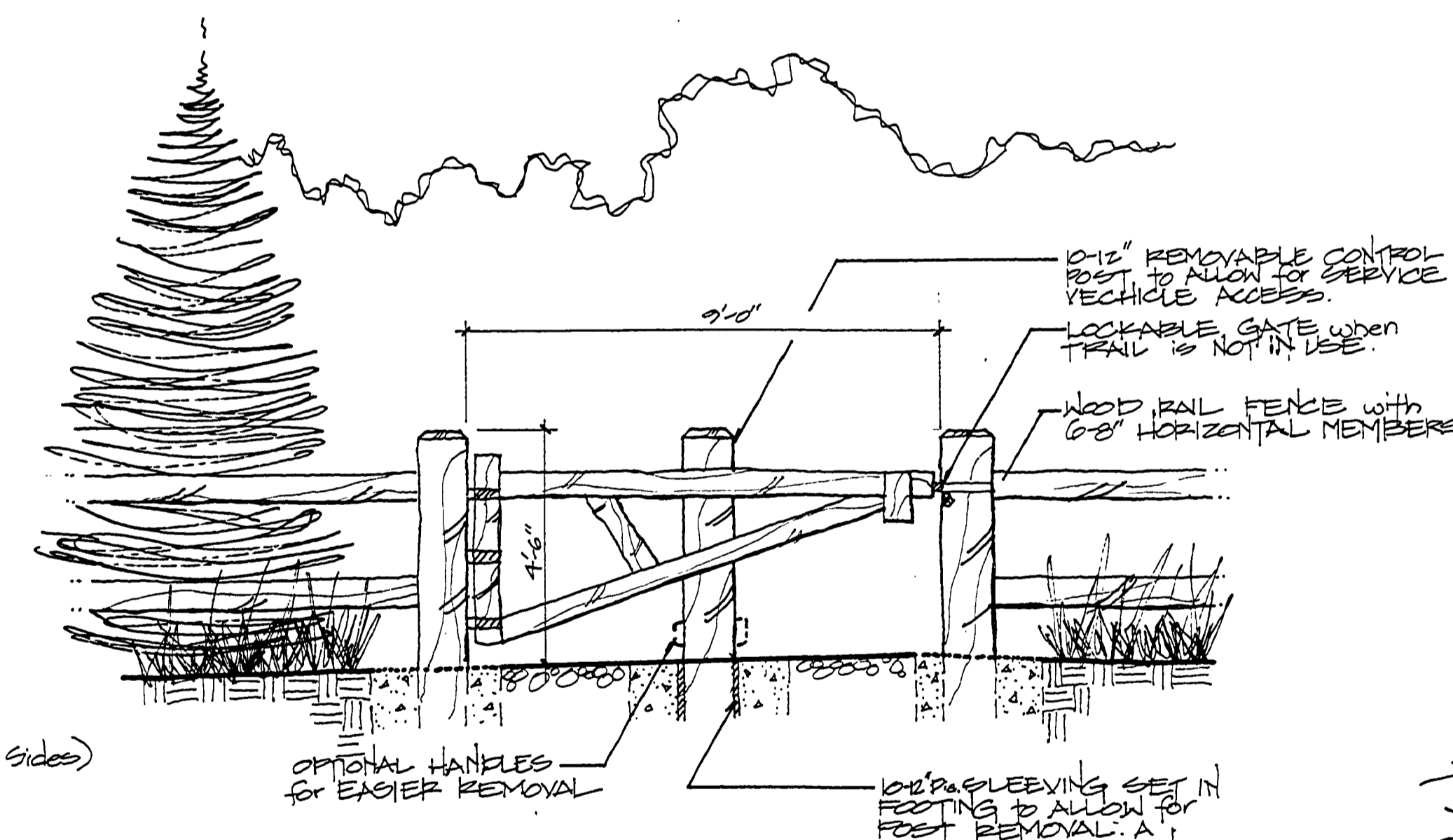
— ELEVATION —
scale: 3/8" = 1'-0"

Trail Head

NOTE -
TRAIL HEAD TO BE
CONSTRUCTED AS PER
PNE DISPLAY
SHELTER STANDARDS

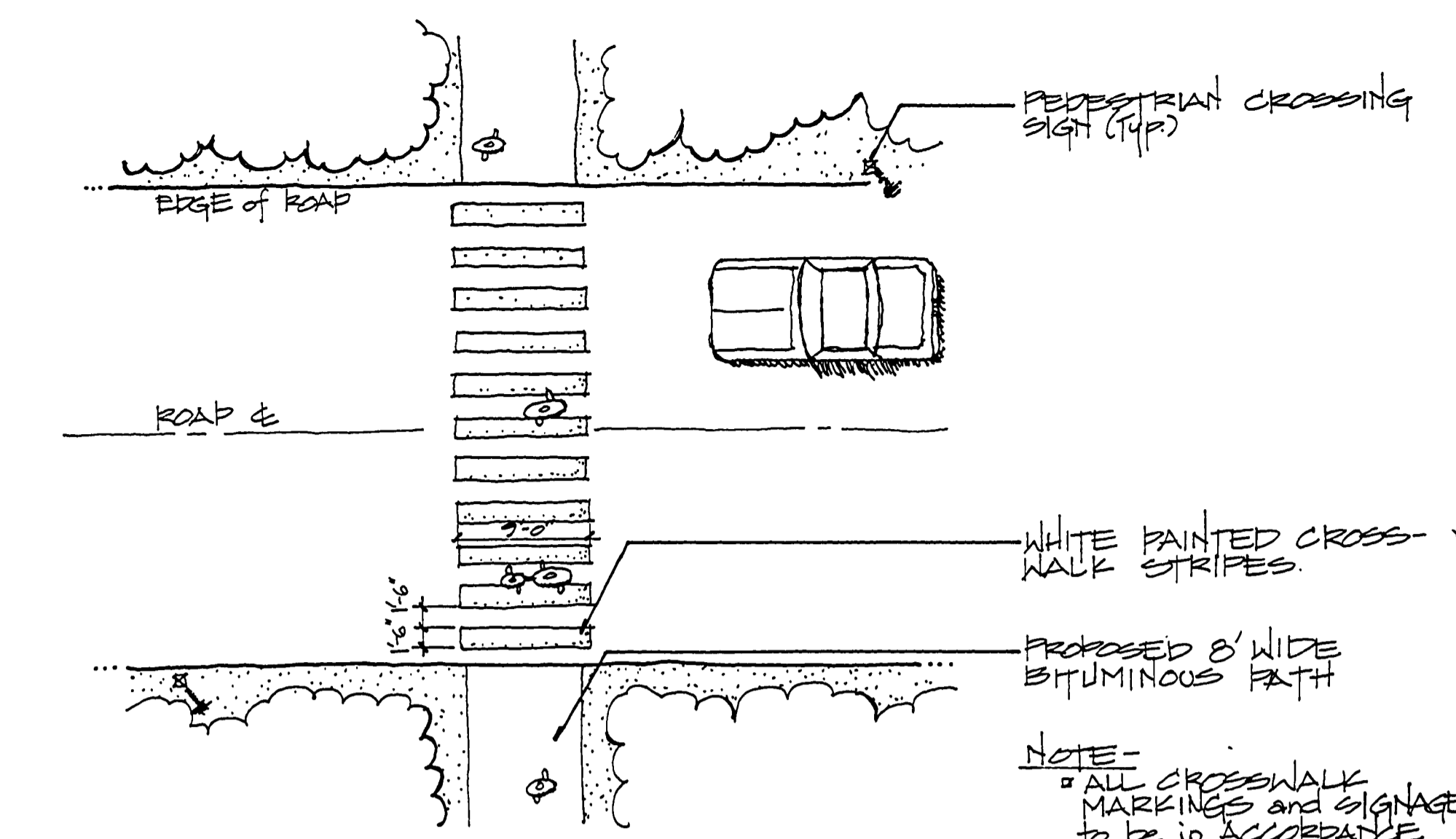


— PLAN —
scale: 1/4" = 1'-0"



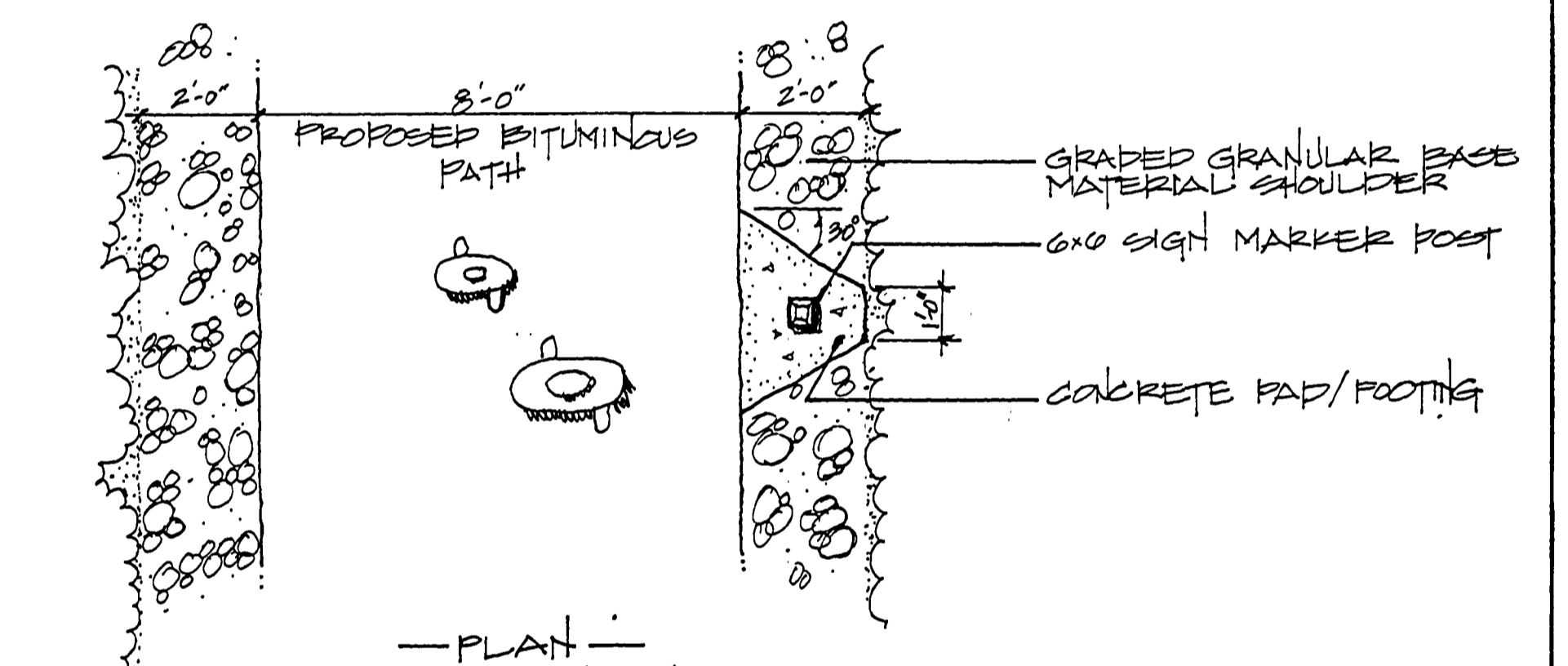
— ELEVATION —
scale: 3/8" = 1'-0"

Gate and Control Post

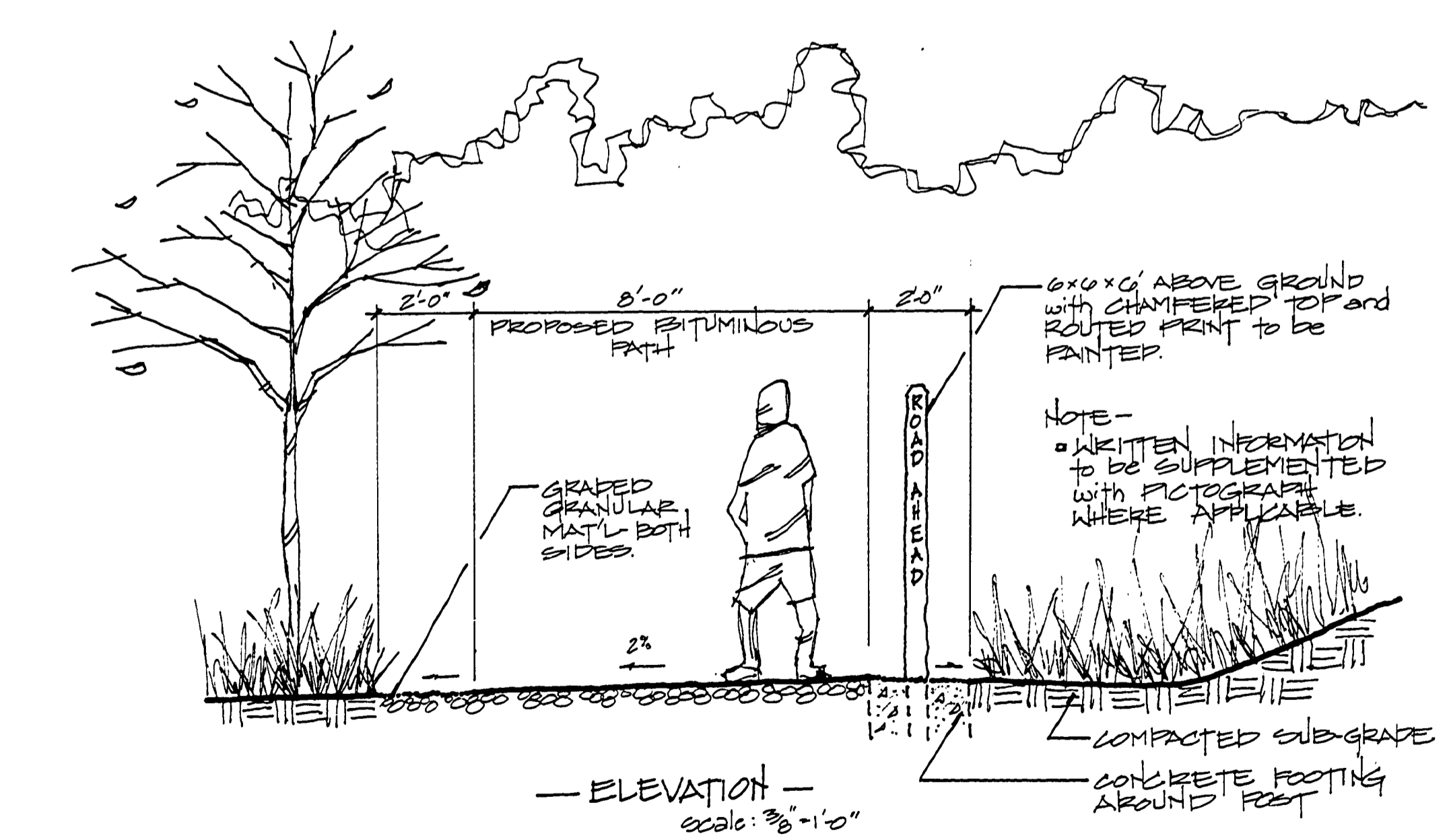


— Crosswalk —
scale: 1" = 10'

NOTE -
ALL CROSSWALK
MARKINGS AND SIGNAGE
TO BE IN ACCORDANCE
WITH ANY LOCAL CODES
OR ORDINANCES. CONFIRM
PRIOR TO CONSTRUCTION
WITH THE APPROPRIATE
TRANSPORTATION
AUTHORITIES.

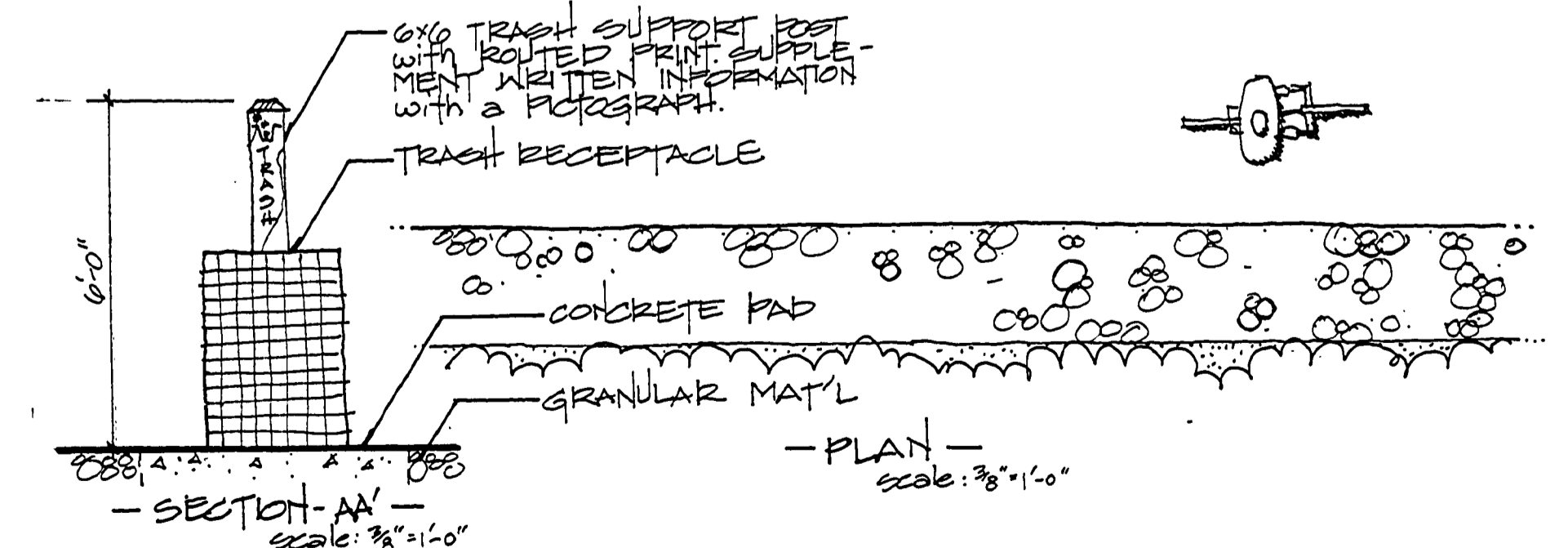
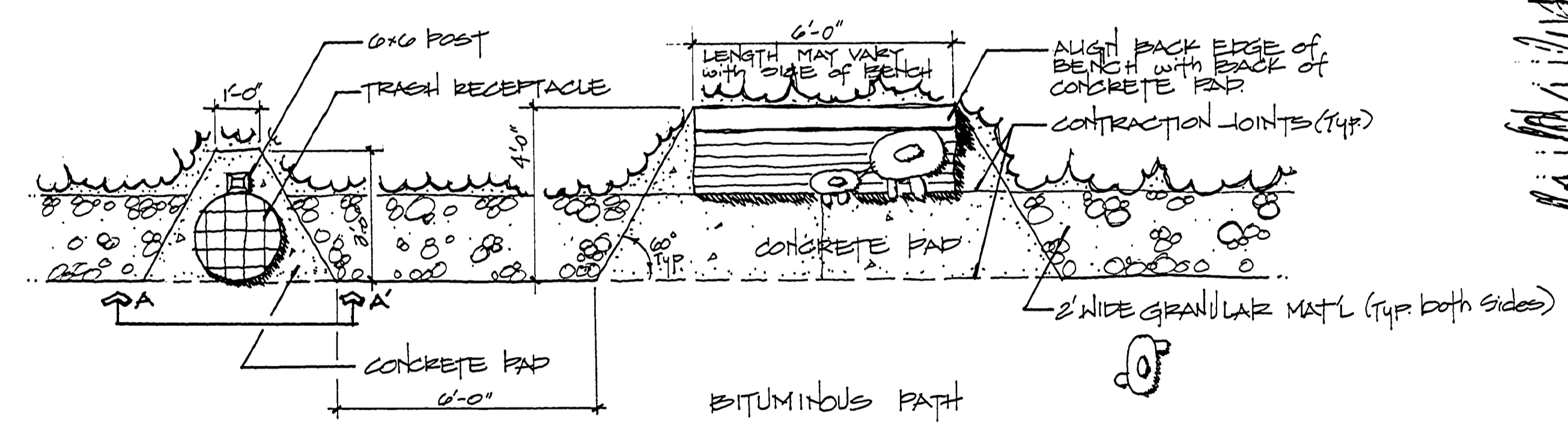


— PLAN —
scale: 3/8" = 1'-0"



— ELEVATION —
scale: 3/8" = 1'-0"

Path and Trail Sign



— SECTION A-A —
scale: 3/8" = 1'-0"

Bench and Trash Pads

SURVEYED BY		DRAWN BY P. PETERSEN		3/90	NO.	DATE	BY	REVISIONS	NO.	DATE	BY	REVISIONS	MICHIGAN DEPARTMENT OF NATURAL RESOURCES	TRAIL FROM NATURE CENTER TO MARSH - DETAILS	AREA OR PARK BAY CITY STATE PARK	PROJECT NO.	
DESIGNED BY P. PETERSEN		3/90	CHECKED BY	DATE	1.				3.					SHEET TITLE	PROJECT	SHEET 2 OF 5	PLAN NO. L-118