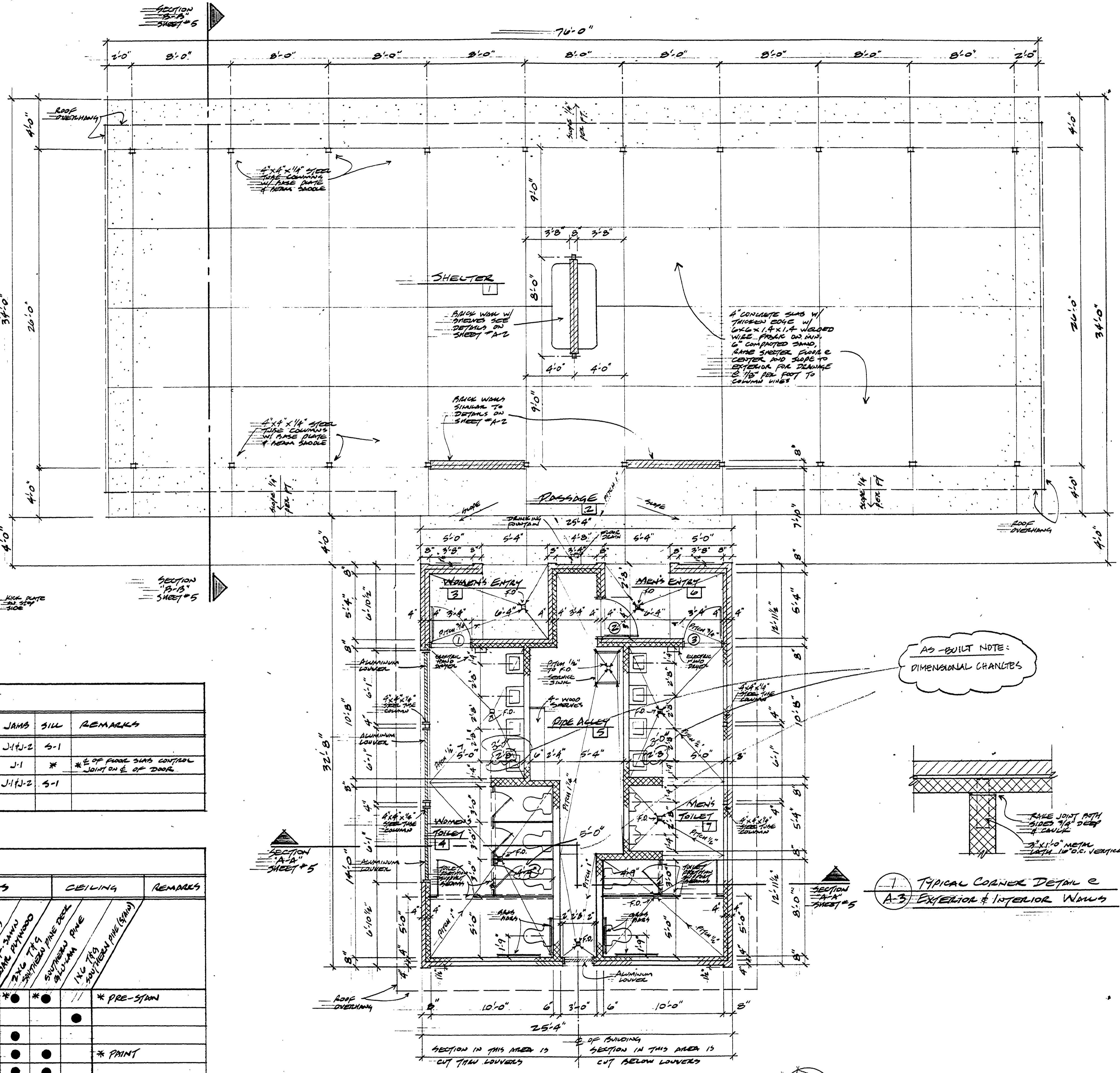


DOOR & FRAME SCHEDULE

NO.	TYPE	HAND	OPENING SIZE	GRUZE	FRAME SIZE	GRUZE	FINISH	HEAD	JAMB	SILL	REMARKS
1	B	R.H.R.	3'-0" x 7'-0" x 1 1/4"	14	2' x 5 1/4"	14	PAINT	H-1	J1/J-2	S-1	
2	A	L.H.R.	3'-0" x 7'-0" x 1 1/4"	14	2' x 5 1/4"	14	PAINT	H-2	J-1	*	* E OF FRAME SILL CONTAIN JOINT ON E OF DOOR
3	B	L.H.R.	3'-0" x 7'-0" x 1 1/4"	14	2' x 5 1/4"	14	PAINT	H-1	J1/J-2	S-1	

ROOM FINISH SCHEDULE

ROOM NO.	ROOM NAME	FLOOR	BASE	WALLS	CEILING	REMARKS
1	SHELTER	CONCRETE HANDMADE	CONCRETE	CONCRETE BRICK 2 1/2" TIG VERTICAL CORNER (STAIN)	2 1/2" TIG VERTICAL CORNER (STAIN)	* PRE-STAIN
2	PASSAGE	CONCRETE	CONCRETE BRICK 5 1/2" HIGH ZONE BRICK TIE	CONCRETE BRICK 2 1/2" TIG VERTICAL CORNER (STAIN)	CONCRETE BRICK 2 1/2" TIG VERTICAL CORNER (STAIN)	
3	WOMEN'S ENTRY	CONCRETE	CONCRETE BRICK 5 1/2" HIGH ZONE BRICK TIE	CONCRETE BRICK 2 1/2" TIG VERTICAL CORNER (STAIN)	CONCRETE BRICK 2 1/2" TIG VERTICAL CORNER (STAIN)	
4	WOMEN'S TOILET	CONCRETE	CONCRETE BRICK 5 1/2" HIGH ZONE BRICK TIE	CONCRETE BRICK 2 1/2" TIG VERTICAL CORNER (STAIN)	CONCRETE BRICK 2 1/2" TIG VERTICAL CORNER (STAIN)	* PAINT
5	PIPE ALLEY	CONCRETE	CONCRETE BRICK 5 1/2" HIGH ZONE BRICK TIE	CONCRETE BRICK 2 1/2" TIG VERTICAL CORNER (STAIN)	CONCRETE BRICK 2 1/2" TIG VERTICAL CORNER (STAIN)	
6	MEN'S ENTRY	CONCRETE	CONCRETE BRICK 5 1/2" HIGH ZONE BRICK TIE	CONCRETE BRICK 2 1/2" TIG VERTICAL CORNER (STAIN)	CONCRETE BRICK 2 1/2" TIG VERTICAL CORNER (STAIN)	
7	MEN'S TOILET	CONCRETE	CONCRETE BRICK 5 1/2" HIGH ZONE BRICK TIE	CONCRETE BRICK 2 1/2" TIG VERTICAL CORNER (STAIN)	CONCRETE BRICK 2 1/2" TIG VERTICAL CORNER (STAIN)	* PAINT



AS-BUILT NOTE:
 DIMENSIONAL CHANGES

7 TYPICAL CORNER DETAIL C
 A-3 EXTERIOR & INTERIOR WALLS

Bernath-Coakley Associates, Architects
 4104 W. St. Joseph Hwy.
 Lansing, Michigan 48917
 (517) 321-9525

STATE OF MICHIGAN
 DEPARTMENT OF MANAGEMENT AND BUDGET
Office of Facilities

TOILET AND SHELTER BUILDING
 BAY CITY STATE PARK
 STATE OF MICHIGAN
 DEPARTMENT OF NATURAL RESOURCES
 PARKS DIVISION
 PROTECTING MICHIGAN'S FUTURE BOND PROGRAM ACCT. NO. 807-75-2480-400

Revisions
 AUG. 3, 1990
 Date
 JULY 27, 1990
 Comm. No.
 9034
 Sheet No.

A3
 L-123