

THE CONTRACTOR SHALL MAINTAIN EXISTING SANITARY SERVICE DURING CONSTRUCTION OF THE IMPROVEMENTS WHILE THE PARK IS OPEN. THE CONTRACTORS SHALL PROVIDE ALL NECESSARY TEES, VALVES AND CONNECTIONS FOR CONTINUAL WASTEWATER SERVICE WITHOUT ADDITIONAL COSTS TO THE OWNER. THE CONTRACTORS PROPOSED MEANS TO ENSURE CONTINUAL SERVICE SHALL BE REVIEWED AND COORDINATED BY THE PROJECT MANAGER PRIOR TO CONSTRUCTION.

CONSTRUCT TEMPORARY 6" TEE AND VALVE TO NORTH, CONNECT INTO NEW EFFLUENT FORCEMAIN TOWARD THE NEW SAND INFILTRATION BASIN. SEE SHEET 2 FOR CONSTRUCTION SCHEDULING.

TEMPORARY TIE OVER WAS MADE AT TANK

RP #	COORD'S
3	N 4579.26 E 5106.84
20	N 5114.62 E 5102.76
21	N 4996.36 E 5546.27
22	N 4700.90 E 5567.50
23	N 4737.51 E 5686.98

WITNESSES TO R.P.:

RP #3 - 60d NAIL
33.28' NB1W TO CAMP POST
18.49' S06E TO CAMP POST
60.75' N05E TO RP

RP #20 - 60d NAIL
11.06' S72W TO 6" ASPEN
15.42' S20E TO 6" ELM
67.71' S75E TO PROP IRON

RP #21 - 60d NAIL
18.65' N86W TO PROP IRON
53.63' S60W TO MON WELL
1.90' N18E TO FENCE

RP #22 - 60d NAIL
23.31' S84W TO 18" APPLE
37.11' S80E TO FENCE
88.16' S71W TO MON WELL

RP #23 - 60d NAIL
57.08' N86W TO 18" MAPLE
124.86' S73W TO RP #22
83.52' S28E TO 18" MAPLE

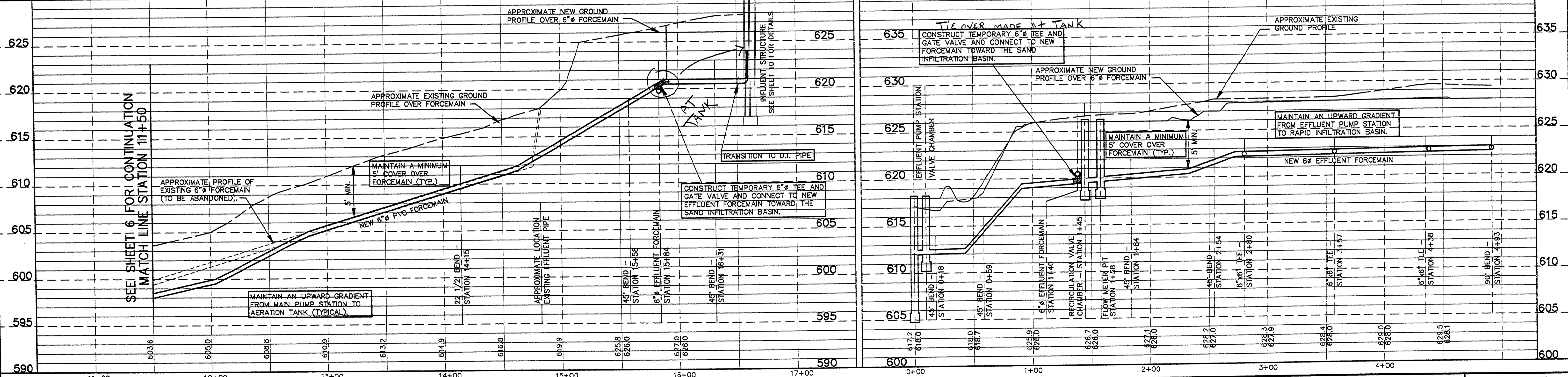
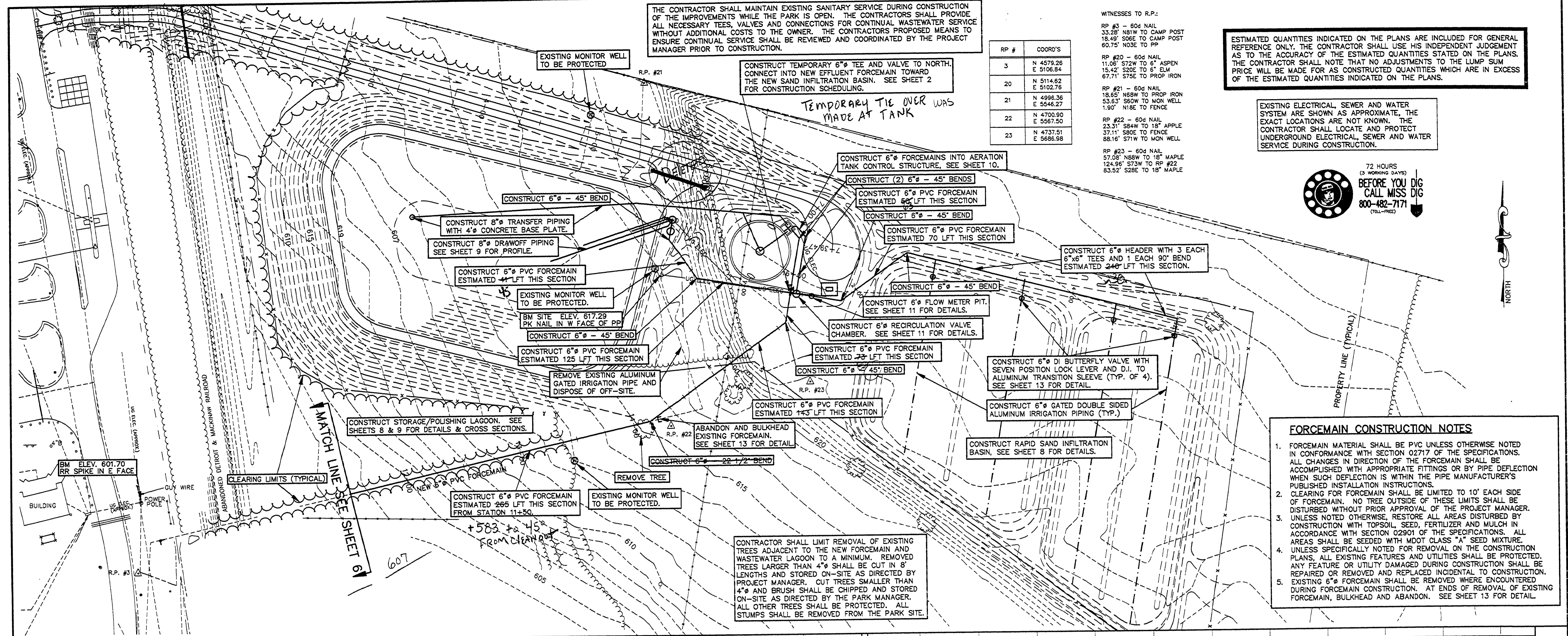
ESTIMATED QUANTITIES INDICATED ON THE PLANS ARE INCLUDED FOR GENERAL REFERENCE ONLY. THE CONTRACTOR SHALL USE HIS INDEPENDENT JUDGMENT AS TO THE ACCURACY OF THE ESTIMATED QUANTITIES STATED ON THE PLANS. THE CONTRACTOR SHALL NOTE THAT NO ADJUSTMENTS TO THE LUMP SUM PRICE WILL BE MADE FOR AS CONSTRUCTED QUANTITIES WHICH ARE IN EXCESS OF THE ESTIMATED QUANTITIES INDICATED ON THE PLANS.

EXISTING ELECTRICAL, SEWER AND WATER SYSTEM ARE SHOWN AS APPROXIMATE. THE EXACT LOCATIONS ARE NOT KNOWN. THE CONTRACTOR SHALL LOCATE AND PROTECT UNDERGROUND ELECTRICAL, SEWER AND WATER SERVICE DURING CONSTRUCTION.



FORCEMAIN CONSTRUCTION NOTES

- FORCEMAIN MATERIAL SHALL BE PVC UNLESS OTHERWISE NOTED IN CONFORMANCE WITH SECTION 02717 OF THE SPECIFICATIONS. ALL CHANGES IN DIRECTION OF THE FORCEMAIN SHALL BE ACCOMPLISHED WITH APPROPRIATE FITTINGS OR BY PIPE DEFLECTION WHEN SUCH DEFLECTION IS WITHIN THE PIPE MANUFACTURER'S PUBLISHED INSTALLATION INSTRUCTIONS.
- CLEARING FOR FORCEMAIN SHALL BE LIMITED TO 10' EACH SIDE OF FORCEMAIN. NO TREE OUTSIDE OF THESE LIMITS SHALL BE DISTURBED WITHOUT PRIOR APPROVAL OF THE PROJECT MANAGER.
- UNLESS NOTED OTHERWISE, RESTORE ALL AREAS DISTURBED BY CONSTRUCTION WITH TOPSOIL, SEED, FERTILIZER AND MULCH IN ACCORDANCE WITH SECTION 02901 OF THE SPECIFICATIONS. ALL AREAS SHALL BE SEED WITH MDT CLASS "A" SEED MIXTURE.
- UNLESS SPECIFICALLY NOTED FOR REMOVAL ON THE CONSTRUCTION PLANS, ALL EXISTING FEATURES AND UTILITIES SHALL BE PROTECTED. ANY FEATURE OR UTILITY DAMAGED DURING CONSTRUCTION SHALL BE REPAIRED OR REMOVED AND REPLACED INCIDENTAL TO CONSTRUCTION.
- EXISTING FORCEMAIN SHALL BE REMOVED WHERE ENCOUNTERED DURING FORCEMAIN CONSTRUCTION. AT ENDS OF REMOVAL OF EXISTING FORCEMAIN, BULKHEAD AND ABANDON. SEE SHEET 13 FOR DETAIL.



FILE NO: 0134PP2
PLOT DATE: 1-18-94
UPDATED BY: PMR

DRN BY: PMR	IDENTIFICATION NO.	ISSUED FOR	DATE
DEST BY: PMR/KM	PROJECT - ALOHA	PRELIMINARY	11-30-93
CHD BY: GDA	STATE ACCOUNT	CONSTRUCTION	1-31-94
APP'D BY: GDA	607-75-2450-400	FINAL RECORD	

REVISIONS	DATE	REVISIONS



STATE OF MICHIGAN
DEPARTMENT OF MANAGEMENT AND BUDGET
Office of Facilities

QUALITY OF LIFE RECREATION BOND
MICHIGAN DEPARTMENT OF NATURAL RESOURCES
PARKS DIVISION - STATE ACCT. NO. 607-75-2450-400

ALOHA STATE PARK
FORCEMAIN STATION 11+50 TO 16+69
AND EFFLUENT FORCEMAIN
PLAN AND PROFILES

SCALE: 1"=40'	VERT. 1"=5'
PROJ. NO.: 90134	SHEET 7 OF 13

L-116