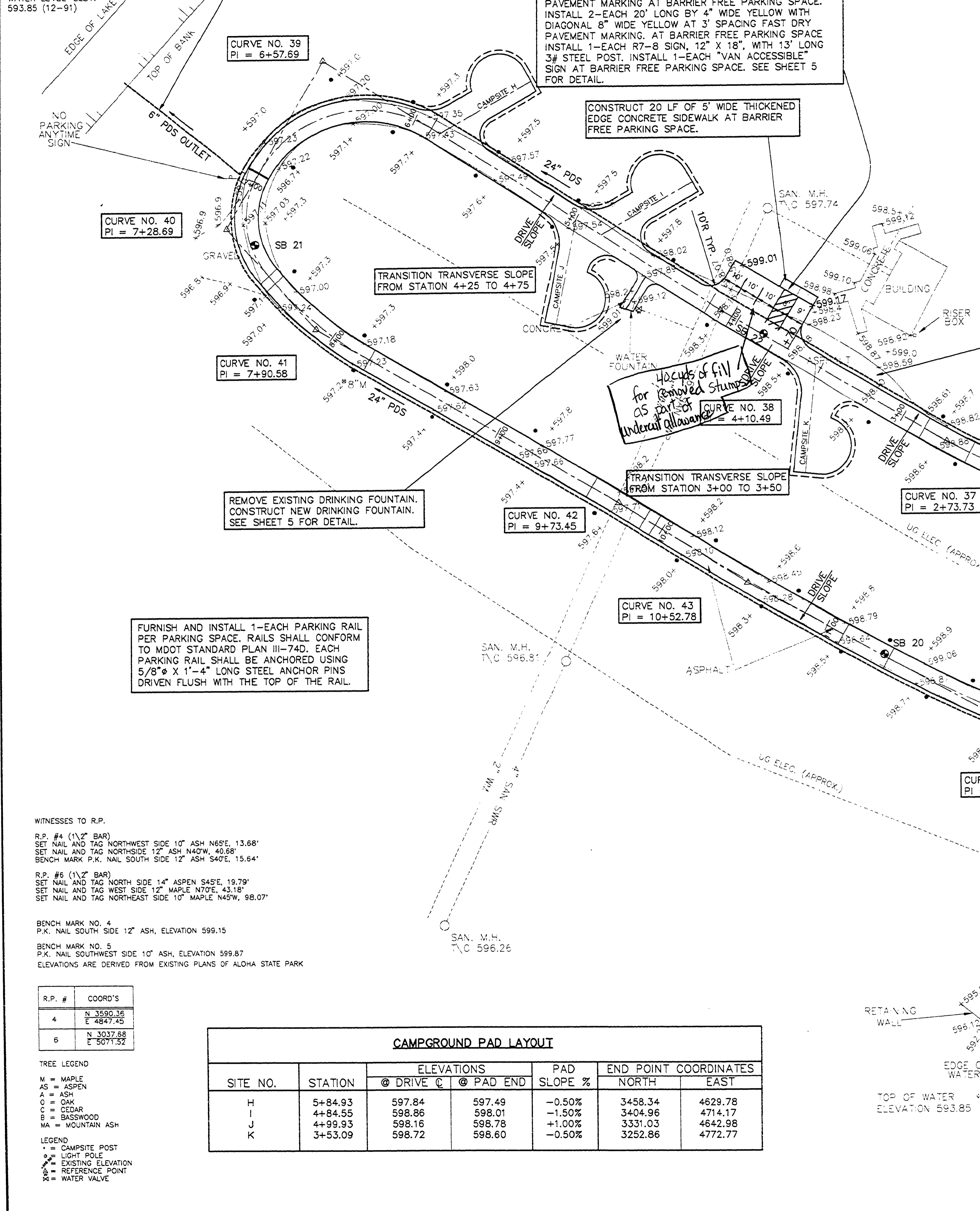


MULLETT LAKE  
WATER LEVEL-ELEV.  
593.85 (12-91)



<p><b>CENTRAL CAMPGROUND SOUTH LOOP DRIVE</b></p> <p>START POINT STATION 0+00 = STATION 29+97.74 ENTRANCE DRIVE COORDINATES N 3174.64 E 5102.44</p> <p>END POINT STATION 14+08.92 = STATION 30+98.71 ENTRANCE DRIVE COORDINATES N 3077.59 E 5075.20</p>	<p><b>CURVE NO. 36</b></p> <p>Δ = 14°20'46" R = 400.00' T = 50.34' D = 14.323945' L = 100.15' PC = 0+72.20 { N 3200.64 PI = 1+22.54 { E 4982.69 PT = 1+72.35</p>	<p><b>CURVE NO. 37</b></p> <p>Δ = 3°52'20" R = 400.00' T = 13.52' D = 14.323945' L = 27.03' PC = 2+60.21 { N 3268.55 PI = 2+73.73 { E 4847.02 PT = 2+87.24</p>	<p><b>CURVE NO. 38</b></p> <p>Δ = 1°54'50" R = 400.00' T = 6.68' D = 14.323945' L = 13.36' PC = 4+03.81 { N 3337.89 PI = 4+10.49 { E 4729.13 PT = 4+17.17</p>	<p><b>CURVE NO. 39</b></p> <p>Δ = 92°05'16" R = 65.00' T = 67.41' D = 88.147353' L = 104.47' PC = 5+90.28 { N 3470.27 PI = 6+57.69 { E 4520.36 PT = 6+94.75</p>
<p><b>CURVE NO. 40</b></p> <p>Δ = 71°56'45" R = 46.00' T = 33.39' D = 124.556042' L = 57.76' PC = 6+95.30 { N 3382.75 PI = 7+28.69 { E 4469.24 PT = 7+53.06</p>	<p><b>CURVE NO. 41</b></p> <p>Δ = 18°21'32" R = 200.00' T = 32.32' D = 28.647890' L = 64.08' PC = 7+58.26 { N 3329.77 PI = 7+90.58 { E 4516.37 PT = 8+22.34</p>	<p><b>CURVE NO. 42</b></p> <p>Δ = 1°51'40" R = 1000.00' T = 16.24' D = 5.729578' L = 32.48' PC = 9+57.21 { N 3238.09 PI = 9+73.45 { E 4675.25 PT = 9+89.69</p>	<p><b>CURVE NO. 43</b></p> <p>Δ = 3°16'02" R = 2000.00' T = 57.04' D = 2.864789' L = 114.05' PC = 9+95.74 { N 3196.24 PI = 10+52.78 { E 4742.63 PT = 11+09.79</p>	<p><b>CURVE NO. 44</b></p> <p>Δ = 20°09'10" R = 650.00' T = 115.51' D = 8.814735' L = 228.63' PC = 11+36.46 { N 3100.94 PI = 12+51.97 { E 4917.58 PT = 13+65.09</p>

FURNISH AND INSTALL 1-EACH PARKING RAIL PER PARKING SPACE. RAILS SHALL CONFORM TO MDOT STANDARD PLAN III-74D. EACH PARKING RAIL SHALL BE ANCHORED USING 5/8" X 1'-4" LONG STEEL ANCHOR PINS DRIVEN FLUSH WITH THE TOP OF THE RAIL.

**CAMPGROUND PAD LAYOUT**

SITE NO.	STATION	ELEVATIONS		PAD SLOPE %	END POINT COORDINATES	
		@ DRIVE C	@ PAD END		NORTH	EAST
H	5+84.93	597.84	597.49	-0.50%	3458.34	4629.78
I	4+84.55	598.86	598.01	-1.50%	3404.96	4714.17
J	4+99.93	598.16	598.78	+1.00%	3331.03	4642.98
K	3+53.09	598.72	598.60	-0.50%	3252.86	4772.77

WITNESSES TO R.P.

R.P. #4 (1 1/2" BAR)  
SET NAIL AND TAG NORTHWEST SIDE 10" ASH N65°E, 13.68'  
SET NAIL AND TAG NORTHSIDE 12" ASH N40°W, 40.68'  
BENCH MARK P.K. NAIL SOUTH SIDE 12" ASH S40°E, 15.64'

R.P. #6 (1 1/2" BAR)  
SET NAIL AND TAG NORTH SIDE 1" ASPEN S45°E, 19.79'  
SET NAIL AND TAG WEST SIDE 12" MAPLE N70°E, 43.18'  
SET NAIL AND TAG NORTHEAST SIDE 10" MAPLE N45°W, 98.07'

BENCH MARK NO. 4  
P.K. NAIL SOUTH SIDE 12" ASH, ELEVATION 599.15

BENCH MARK NO. 5  
P.K. NAIL SOUTHWEST SIDE 10" ASH, ELEVATION 599.87

ELEVATIONS ARE DERIVED FROM EXISTING PLANS OF ALOHA STATE PARK

R.P. #	COORD'S
4	N 3590.36 E 4847.45
6	N 3037.68 E 5071.52

**TREE LEGEND**

M = MAPLE  
AS = ASPEN  
A = ASH  
O = OAK  
C = CEDAR  
B = BASSWOOD  
WA = MOUNTAIN ASH

**LEGEND**

○ = CAMPSITE POST  
● = LIGHT POLE  
○ = EXISTING ELEVATION  
● = REFERENCE POINT  
○ = WATER VALVE

SEE SHEET 3 FOR TYPICAL CROSS SECTION FOR CAMPGROUND DRIVE.

SEE SHEET 11 FOR ENTRANCE DRIVE PLAN AND PROFILES

SEE SHEET 15 FOR SOUTH LOOP DRIVE PROFILE.

SEE SHEET 5 FOR CAMPGROUND PAD TYPICAL CROSS SECTION AND DETAILS.

Replaces Sheet 14 of 17 - Bulletin No. 1

FILE NO.: 1185CSLB  
PLOT DATE: 10-28-93  
UPDATED BY: LJS

DRN BY: DAF	IDENTIFICATION NO. PROJECT - ALOHA	ISSUED FOR: PRELIMINARY	DATE: 7-06-92	BULLETIN NO. 101
CHKD BY: GJF	STATE ACCOUNT	CONSTRUCTION	7-14-93	
APPD BY: GDA	607-75-2450-400	FINAL RECORD		

STATE OF MICHIGAN DEPARTMENT OF MANAGEMENT AND BUDGET Office of Facilities
--



QUALITY OF LIFE RECREATION BOND  
MICHIGAN DEPARTMENT OF NATURAL RESOURCES  
PARKS DIVISION - STATE ACCT. NO. 607-75-2450-400

ALOHA STATE PARK  
CENTRAL CAMPGROUND  
SOUTH LOOP DRIVES PLAN

SCALE: 1"=30'  
PROJ. NO.: 91165  
SHEET 10 OF 10

L-110