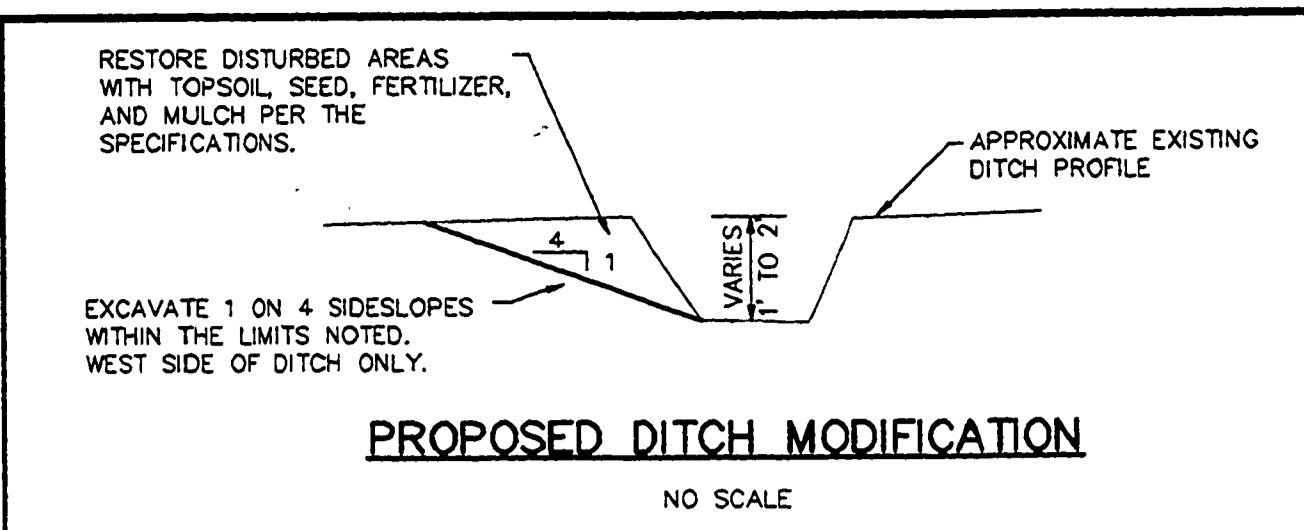


CAMPGROUND PAD LAYOUT

SITE NO.	STATION	ELEVATIONS		PAD SLOPE %	END POINT COORDINATES	
		DRIVE C	PAD END		NORTH	EAST
2	2+04	599.43	600.00	+1.00%	5043.9	4913.2
4	2+62	599.37	600.11	+1.50%	4992.4	4924.1
8	3+44	598.97	599.99	+2.00%	4899.9	4950.3
10	3+93	598.78	599.80	+2.00%	4855.9	4959.7
12	4+48	598.55	600.02	+3.00%	4808.6	4969.9
14	4+88	598.39	599.86	+3.00%	4762.8	4980.4
16	0+39	600.29	599.64	-1.00%	4705.2	4983.1
49	10+16	601.70	601.14	-0.80%	5085.3	4941.8
50	10+65	602.14	601.26	-1.50%	5037.2	4950.1
51	11+18	602.50	601.40	-2.00%	4984.3	4958.8
52	11+86	602.71	601.61	-2.00%	4918.0	4969.7
54	12+25	602.70	601.60	-2.00%	4848.8	4978.1
55	12+81	602.54	601.44	-2.00%	4793.5	4987.2
56	13+33	602.21	600.56	-3.00%	4744.6	4994.1



TREE LEGEND

M = MAPLE
 AS = ASPEN
 A = ASH
 O = OAK
 C = CEDAR
 B = BASSWOOD
 MA = MOUNTAIN ASH

LEGEND

+ = CAMPSITE POST
 * = LIGHT POLE
 X = EXISTING ELEVATION
 ○ = REFERENCE POINT
 □ = WATER VALVE

WITNESSES TO R.P.

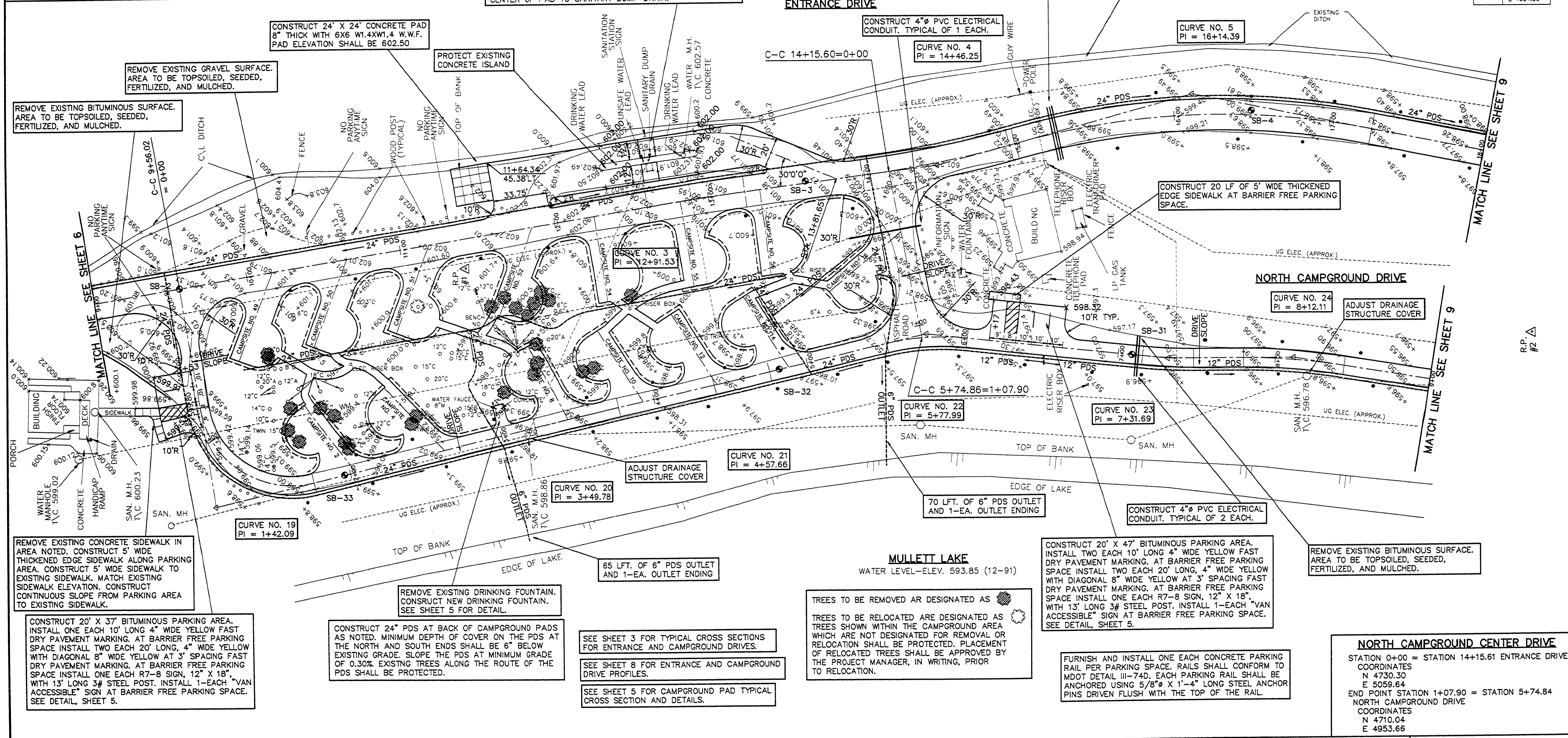
R.P. #1 (1/2" BAR)
 SET NAIL AND TAG NORTH SIDE 8' ASPEN S80°E, 40.57'
 BENCH MARK NORTHEAST SIDE 10' CEDAR S70°E, 13.74'
 SET NAIL AND TAG SOUTHWEST SIDE 10' ASH N45°W, 39.78'

R.P. #2 (1/2" BAR)
 SET NAIL AND TAG SOUTHWEST SIDE 10' ASH N10°W, 42.51'
 SET NAIL AND TAG NORTH SIDE 10' MAPLE N80°E, 68.28'
 SET NAIL AND TAG EAST SIDE 10' ASH S25°W, 61.26'

BENCH MARK NO. 2
 P.K. NAIL EAST SIDE OF 34' MAPLE, ELEVATION 605.46

BENCH MARK NO. 3
 NAIL AND TAG NORTHEAST SIDE 10' ASH, ELEVATION 601.76

R.P. #	COORD'S
1	N 5000.00 E 3000.00
2	N 4320.55 E 4864.59



CURVE NO. 3	CURVE NO. 4	CURVE NO. 5	NORTH CAMPGROUND DRIVE	CURVE NO. 19	CURVE NO. 20	CURVE NO. 21	CURVE NO. 22	CURVE NO. 23	CURVE NO. 24
Δ = 1°47'32" R = 2000.00' T = 31.28' D = 2,864,789' L = 62.56' PC = 12+60.25 PI = 12+91.53 PT = 13+22.81	Δ = 7°39'44" R = 710.00' T = 47.55' D = 8,069,828' L = 94.95' PC = 13+98.70 PI = 14+46.25 PT = 14+93.65	Δ = 26°20'27" R = 500.00' T = 117.04' D = 11,459,156' L = 229.94' PC = 14+97.35 PI = 16+14.39 PT = 17+27.29	STATION 0+00 = STATION 9+56.02 ENTRANCE DRIVE COORDINATES N 5184.32 E 4988.53	Δ = 94°19'28" R = 60.00' T = 64.71' D = 95,492,966' L = 98.78' PC = 0+77.38 PI = 1+42.09 PT = 1+76.16	Δ = 1°02'30" R = 3000.00' T = 27.27' D = 1,909,859' L = 54.54' PC = 3+22.51 PI = 4+57.66 PT = 3+77.05	Δ = 0°41'23" R = 3000.00' T = 18.06' D = 1,909,859' L = 36.11' PC = 4+39.60 PI = 5+77.99 PT = 4+75.71	Δ = 19°35'45" R = 150.00' T = 25.90' D = 38,197,186' L = 51.30' PC = 5+52.09 PI = 6+03.39 PT = 6+03.39	Δ = 6°15'47" R = 300.00' T = 16.41' D = 19,098,593' L = 32.79' PC = 7+15.28 PI = 7+31.69 PT = 7+48.07	Δ = 9°17'51" R = 400.00' T = 32.53' D = 14,323,945' L = 64.91' PC = 7+79.58 PI = 8+12.11 PT = 8+44.49

DESIGNED BY: DAF
 CHECKED BY: GJF
 APPROVED BY: GDA

IDENTIFICATION NO. PROJECT - ALOHA
 STATE ACCOUNT 607-75-2450-400

ISSUED FOR: PRELIMINARY, CONSTRUCTION, FINAL RECORD
 DATE: 7-05-92, 7-14-93

CAPITAL CONSULTANTS, INC. ENGINEERS
 STATE OF MICHIGAN DEPARTMENT OF MANAGEMENT AND BUDGET
 OFFICE OF FACILITIES

QUALITY OF LIFE RECREATION BOND
 MICHIGAN DEPARTMENT OF NATURAL RESOURCES
 PARKS DIVISION - STATE ACCT. NO. 607-75-2450-400

ALOHA STATE PARK
 ENTRANCE DRIVE STATION 9+00 TO 18+00
 NORTH CAMPGROUND DRIVE STATION 0+00 TO 9+00

SCALE: 1" = 30'
 PROJ. NO.: 91165
 SHEET 11 OF 17

REFER TO L-110A - SHEET 2 OF 10

L-110

FILE NO.: 116502
PLOT DATE: 7-13-93
UPDATED BY: GJF